

GEKOS — WINNINGHOFF BOATS



Builder: WINNINGHOFF BOATS

Year Built: 1986

Model: Deck Boat

Price: PRICE ON APPLICATION

Location: United States

LOA: 50' 0" (15.24m)

Beam: 15' 0" (4.57m)

Min Draft: 5' 0" (1.52m)

Cruise Speed: 20 Kts. (23 MPH)

Max Speed: 24 Kts. (28 MPH)

Our experienced yacht broker, Andrey Shestakov, will help you choose and buy a yacht that best suits your needs **Gekos — WINNINGHOFF BOATS** from our catalogue. Presently, at Shestakov Yacht Sales Inc., we have a wide variety of yachts available on our sale's list. We also work in close contact with all the big yacht manufacturers from all over the world.

If you would like to buy a yacht **Gekos — WINNINGHOFF BOATS** or would like help answering any questions concerning purchasing, selling or chartering a yacht, please call **+1(954)274-4435**

TABLE OF CONTENTS

TABLE OF CONTENTS	2
SPECIFICATIONS	5
Overview	5
Basic Information	5
Dimensions	5
Speed, Capacities and Weight	5
Accommodations	5
Hull and Deck Information	6
Engine Information	6
DETAILED INFORMATION	7
Wheel House	7
Mechanical	7
Deck Equipment	7
Accommodations	8
Salon/Galley	8
Disclaimer	8
Exclusions	9
Disclaimer	9
PHOTOS	10
Gekos Bow	10
Gekos Stern	10
Gekos Port	10
Gekos Starboard	10
Port Gunwale	11
Starboard Gunwal	11
Air Pressure Gauge Cockpit	11
Aft Salon Door	11
Starboard Cockpit Seating	12

Port Cockpit Seating	12
Bow	12
Pilothouse	12
Bow Storage	12
Anchor	12
Tender	13
Upper Helm	13
Day Head off Galley	13
Starboard Galley	13
Dinette	13
Port Dinette	13
Galley	14
Salon Aft	14
Companionway to Bridge	14
Coffee Station	14
Bridge Port	14
Bridge	14
Bridge	15
Helm	15
Bow Thruster Control	15
Engine Gauges	15
VHF	15
110 Breaker Panel	15
Bridge Storage	16
Bridge Tool Box	16
Companionway Hanging	16
Companionway Tool Box	16
Engine Access	17
Main Engine	17

Oil Filtration System	17
Genset Hydraulic	17
Compressor	18
Hydraulic Tank	18
Sea Strainer	18
Aft Engine Compartment	18
Forward Crew Stateroom	19
Forward Crew	19
Capt Stateroom	19
Forward Crew	19
Capt Stateroom	20
Capt Stateroom	20
Capt Stateroom	20
Forward Head	20
Forward Shower	21
Under Construction	21
Under Construction	21
CONTACTS	22
Contact details	22
Telephones	22
Office hours	22
Address	22

SPECIFICATIONS

Overview

Gekos is a well known Northern Aluminum Dive boat that was built by Winninghoff Ship Yard for a very knowledgeable owner, with many custom features. She offers a very economical 20 knots cruise with her single (1996) 1000 hp MAN, and has a Hydraulic bow thruster. The boat is Coast Guard Certified for 24 persons (Certification needs to be renewed), and boasts accommodations for 6 people, a good size salon, and bridge deck. It also has a large aft deck with integrated boarding step, and dingy with electric davit. If you're looking for a turn key expedition, recovery, dive boat, or work platform, come check out the Gekos, conveniently located in Ocean City, MD.

Basic Information

Category: Deck Boat

Model Year: 1986

Year Built: 1986

Country: United States

Fly Bridge: Yes

Cockpit: Yes

Dimensions

LOA: 50' 0" (15.24m)

Beam: 15' 0" (4.57m)

Min Draft: 5' 0" (1.52m)

Speed, Capacities and Weight

Cruise Speed: 20 Kts. (23 MPH)

Max Speed: 24 Kts. (28 MPH)

Water Capacity: 70 Gallons

Fuel Capacity: 750 Gallons

Accommodations

Total Cabins: 2

Total Heads: 2

Hull and Deck Information

Hull Material: Aluminum

Engine Information

Engines: 1

Manufacturer: MAN

Model: V12

Engine Type: Inboard

Fuel Type: Diesel

DETAILED INFORMATION

Wheel House

- Hydraulic Bow Thruster
- Furuno 15" Commercial Radar
- Furuno 15" Commercial Dual Frequency Depth Sounder
- Furuno Satellite compass interfaced with radar for true North plotting
- Northstar 957 GPS with 490 color sounder
- Northstar 952x GPS
- Northstar 800 GPS/Loran
- Robertson Autopilot
- Icom VHF
- Icom SSB
- Flow Scan system
- Davis Wind Speed/Temp indicator
- Search Light
- EPIRB

Mechanical

- 1996 MAN 12 Cylinder 1000hp Main 1900hrs
- 20 KW Generator 1300hrs
- Hydraulic Bow Thruster
- Drive for air compressor
- Bauer Compressor 26 CFM 5000 PSI piped to back deck with 6 whips 150hrs
- Compressor 42 CFM 200 PSI for power tools and air lifting
- 300' hose on reel
- Yanmar Diesel compressor drive motor
- Cabin Heat/AC
- Oil filtration system
- Block heater for main
- Battery Charger
- Fire System

Deck Equipment

- Large Aft Deck
- Seating on Aft Deck
- Aft Deck Air hook up
- Walk Thru Transom Door with integrated ladder

- Flybridge Helm Station (on top of pilot house)
- Radar/Antenna Mast
- 800lb Electric Davit (top aft deck)
- 12' RIB with Yamaha 25hp Four Stroke
- Windless
- Danforth and Grapple anchor's
- Bow Deck storage

Accommodations

- Large Salon
- Large Wheel House with seating
- Crew Quarters sleeps 4
- Capt Quarters sleeps 2
- Full Head forward
- Day Head aft
- Dinette/Galley

Salon/Galley

- TV/VCR
- Microwave
- Sink
- Hot Water
- AC/Heat
- Refrigerator
- Ice Maker

Disclaimer

While we attempt to display current and accurate data, this listing may not reflect the most recent transactions or may contain occasional data entry errors. Selling agent makes no warranties, express or implied, regarding the content or availability of the products described herein. All inventory listed is subject to availability and prior sale. Please consult selling agent for details. Prices are quoted for the USA only and may not include transportation, taxes, or other applicable charges. Photographs may be representative only and may vary somewhat from the actual items offered for sale. We will not be responsible for inaccurate data obtained from our site. Please check with your local dealer to ensure that you have the latest information available. Information on this web site could include technical inaccuracies or typographical errors. Changes may be periodically made to the information or the products herein. Questions or comments regarding these policies may be directed to website hosting agent.

Exclusions

Owner's personal belongings.

Disclaimer

The Company offers the details of this vessel or yacht in good faith but cannot guarantee or warrant the accuracy of this information nor warrant the condition of the vessel. A buyer should instruct his representatives, agents, or his surveyors, to investigate such details as the buyer desires validated. This vessel or yacht is offered subject to prior sale, price change, or withdrawal without notice.

PHOTOS

Gekos Bow



Gekos Stern



Gekos Port



Gekos Starboard



Port Gunwale



Starboard Gunwal



Air Pressure Gauge Cockpit



Aft Salon Door



Starboard Cockpit Seating



Port Cockpit Seating



Bow



Pilothouse



Bow Storage



Anchor



Tender



Upper Helm



Day Head off Galley



Starboard Galley



Dinette



Port Dinette



Galley



Salon Aft



Companionway to Bridge



Coffee Station



Bridge Port



Bridge



Bridge



Helm



Bow Thruster Control



Engine Gauges



VHF



110 Breaker Panel



Bridge Storage



Bridge Tool Box



Companionway Hanging



Companionway Tool Box



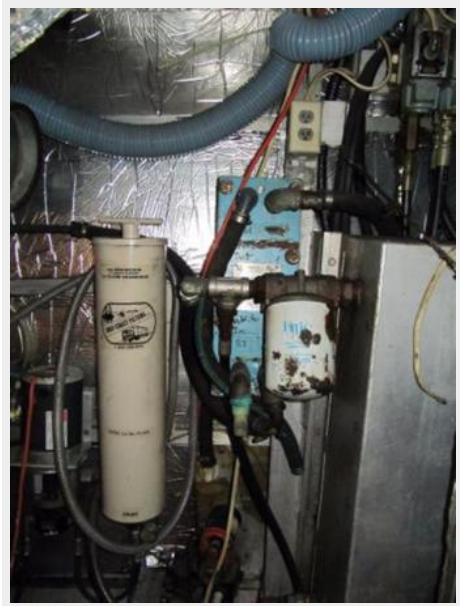
Engine Access



Main Engine



Oil Filtration System



Genset Hydraulic



Compressor



Hydraulic Tank



Sea Strainer



Aft Engine Compartment



Forward Crew Stateroom



Forward Crew



Forward Crew



Capt Stateroom



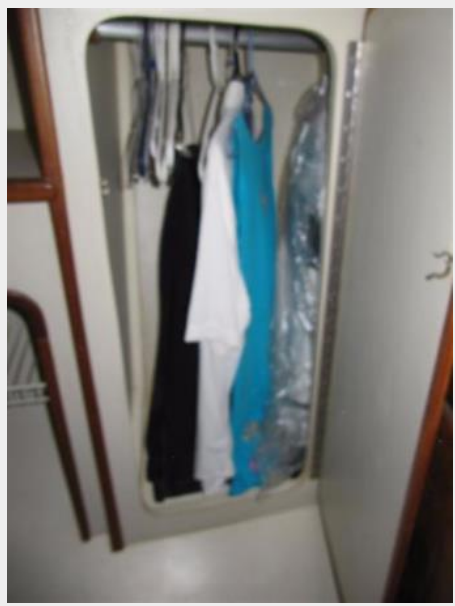
Capt Stateroom



Capt Stateroom



Capt Stateroom



Forward Head



Forward Shower



Under Construction



Under Construction



CONTACTS

Andrey Shestakov, leading yacht broker of the sales department of Shestakov Yacht Sales Inc. Shestakov Yacht Sales Inc., the official representative of the Miami/Fort Lauderdale FL headquarters.

Contact details

Email: andrey@shestakovyachtsales.com

Web: shestakovyachtsales.com/en/

Telephones

USA: +1(954)274-4435

Office hours

Monday – Saturday: **9:00 - 21:00** EDT

Sunday: **closed**

Address



Harbour Towne Marina, 850 NE 3rd St,
STE 213, Dania, FL 33004