



SHESTAKOV

Yacht Sales

2010 CUSTOM AXCELL YACHTS 650 POWER CATAMARAN



Builder: CUSTOM

Year Built: 2010

Model: 2010 Axcell Yachts 650 Power Catamaran

Price: \$3,499,900 USD

Location: United States

Max Speed: 46 Knots (52.94 MPH)

LOA: 66' 0" (20.22 mm)

Beam: 20' 0" (6.3 mm)

Min Draft: 0' 0" (0 mm)

Max Draft: 11' 6" (3.5 mm)

Cruising Speed: 36 Knots (41.43 MPH)

Our experienced yacht broker, Andrey Shestakov, will help you choose and buy a yacht that best suits your needs 2010 Custom Axcell Yachts 650 Power Catamaran — CUSTOM from our catalogue. Presently, at Shestakov Yacht Sales Inc., we have a wide variety of yachts available on our sale's list. We also work in close contact with all the big yacht manufacturers from all over the world.

If you would like to buy a yacht 2010 Custom Axcell Yachts 650 Power Catamaran — CUSTOM or would like help answering any questions concerning purchasing, selling or chartering a yacht, please call **+1(954)274-4435**

TABLE OF CONTENTS

TABLE OF CONTENTS	2
SPECIFICATIONS	3
Basic Information	4
Dimensions	5
Speed, Capacities and Weight	5
Accommodations	5
Hull and Deck Information	5
Engine Information	5
PHOTOS	6
CONTACTS	15
Contact details	15
Telephones	15
Office hours	15
Address	15

SPECIFICATIONS

Overview

This 2010 Axccl Yachts 650 is a truly unique vessel, gliding effortlessly over the water with its innovative air lift system. As the sole 650 model crafted by Axccl Yachts, it stands out in the world of yacht sales.

Step aboard this one-of-a-kind Axccl 650, adorned with premium materials throughout. Among the three Axccl creations, this is the only 65-footer, offering an experience akin to entering a luxury hotel like the Ritz Carlton.

Inside, the yacht boasts an exquisite interior featuring a leather sofa, leather headliner, and elegant hardwood floors. The galley is a chef's dream, with expansive granite countertops, sleek black appliances, and ample storage, conveniently located near the laundry area equipped with a washer, dryer, and a fold-down bed.

With three luxurious staterooms, each with its own en-suite head and custom glass showers, this yacht ensures comfort and privacy for extended stays. The staterooms are furnished with top-tier amenities and abundant storage.

Equipped with state-of-the-art electronics, including ZF electronic steering and controls, Stidd helm seats, Lewmar bow and stern thrusters, and a windlass, this yacht is a marvel of modern engineering. It features dual Raymarine E120 displays with GPS plotter and radar, Ray218 VHF, a Clarion marine stereo, and FLIR with remote control.

Originally a manufacturer's demo vessel, this Axccl 650 was not registered until September 2020, resulting in low engine hours. The engine rooms are a testament to precision, housing stainless steel fuel lines, Northstar AGM batteries, and meticulously arranged electrical systems. Each engine room contains a powerful 1,015-mhp Caterpillar C18 ACERT diesel engine, connected to a ZF MiniRex surface-piercing drive via a carbon-fiber jackshaft.

The yacht's advanced technology includes an automatic air blower system, enhancing speed and efficiency. The system is computer-controlled, optimizing performance as the throttles are engaged.

Key features include:

Yacht entered service in 2020

Comprehensive refit in 2022

All-new electronics

Brand new surface drives

New joystick and easy set drive system

Six new underwater lights

New Sea Deck

Unique hovercraft technology available for sale with the yacht, including all build plans

Seller holds all build specifications and rights from the prototype manufacturer

Financing and worldwide delivery options are available. Explore yacht sales in the current boat location and seize the opportunity to own this extraordinary high-performance catamaran.

Basic Information

Category: Motor yachts

Sub category: Cruisers

Model Year: 2010

Year Built: 2010

Country: United States

Dimensions

LOA: 66' 0" (20.22 mm)

Beam: 20

Min Draft: 0' 0" (0 mm)

Max Draft: 11' 6" (11.483 mm)

Speed, Capacities and Weight

Cruise Speed: 36 Knots (41.43 MPH)

Cruise Speed Range: 0 Kts.

Max Speed: 46 Knots (52.94 MPH)

Max Speed Range: 0 Kts.

Gross Tonnage: 0 Pounds

Water Capacity: 61000 Gallons.

Holding Tank: 0 Gallons

Fuel Capacity: 650 Gallons

Accommodations

Total Cabins: 0

Total Berths: 0

Sleeps: 3

Total Heads: 3

Crew Cabin: 0

Crew Berths: 0

Crew Heads: 0

Hull and Deck Information

Hull Material: Fiberglass and Plastic Yachts

Deck Material: Fiberglass

Hull Configuration: N/A

Hull Designer: N/A

Interior Designer: N/A

Engine Information

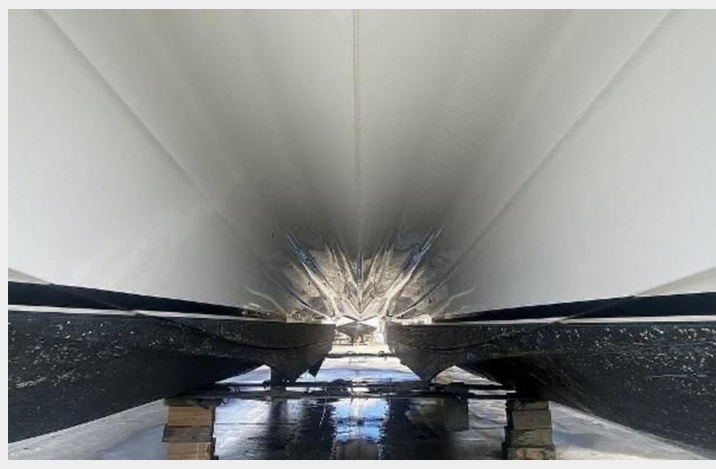
Engines: 2

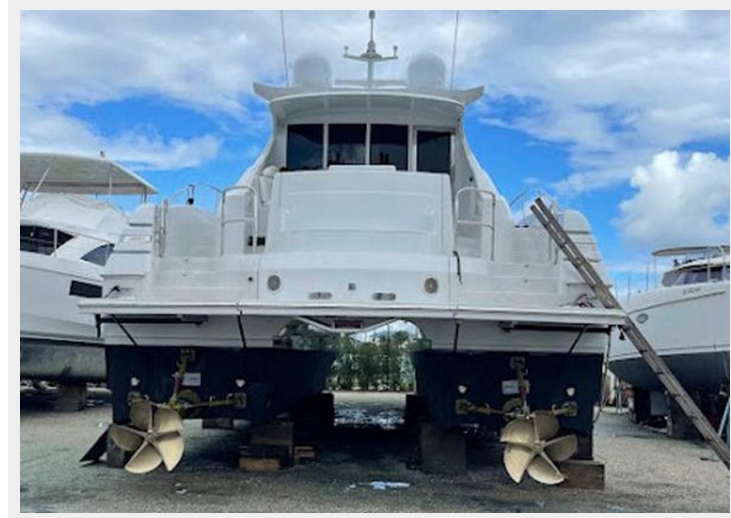
Manufacturer: Caterpillar

Engine Type: I/O

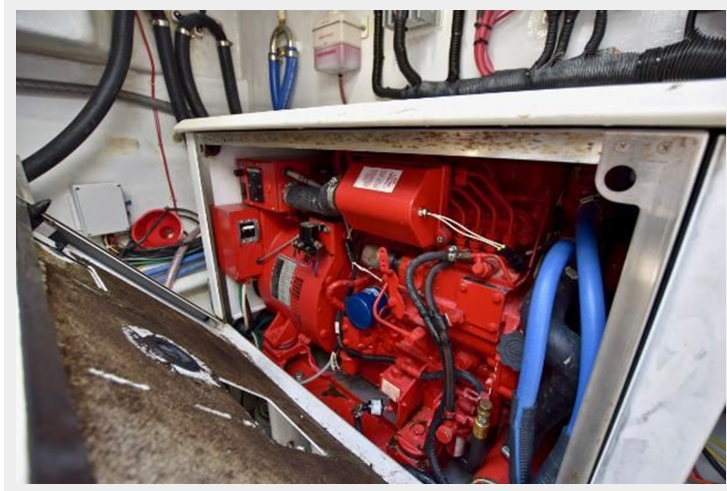
Fuel Type: Diesel

PHOTOS





















CONTACTS

Andrey Shestakov, leading yacht broker of the sales department of Shestakov Yacht Sales Inc. Shestakov Yacht Sales Inc., the official representative of the Miami/Fort Lauderdale FL headquarters.

Contact details

Email: andrey@shestakovyachtsales.com

Web: shestakovyachtsales.com

Telephones

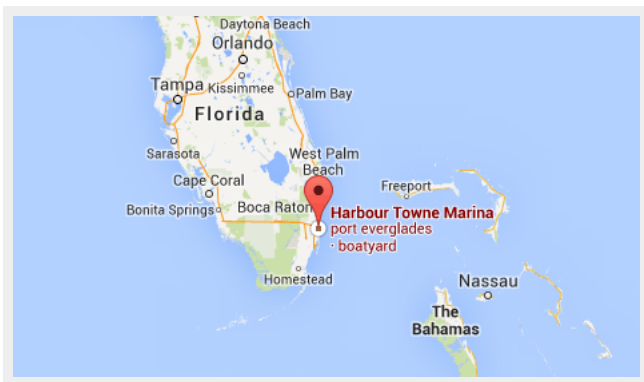
USA: +1(954)274-4435

Office hours

Monday – Saturday: **9:00 - 21:00** EDT

Sunday: **closed**

Address



Harbour Towne Marina, 850 NE 3rd St, STE 213,
Dania, FL 33004