

1959 CHRIS-CRAFT 17 NORWOLF LANCER - CHRIS-CRAFT



Builder:

[CHRIS-CRAFT](#)

Year Built:

1959

Model:

17 NORWOLF LANCER

Price:

[See on website](#)

Location:

Douglas County, United States

Max Speed:

50 Knots (50 MPH)

LOA:

17' 0" (5.18 mm)

Beam:

8' 0" (2.44 mm)

Min Draft:

- (0 mm)

Max Draft:

- (0 mm)

Cruising Speed:

30 Knots (30 MPH)

TABLE OF CONTENTS

Overview 3

Specifications 4

 Basic Information 4

 Dimensions 4

 Speed, Capacities and Weight 4

 Accommodations 5

 Hull and Deck Information 5

Gallery 6

Contacts 8

OVERVIEW

This exquisite vessel is a testament to fine craftsmanship, originally created by a former Chris-Craft employee who founded Norwolf Lancer. During the 1950s and 1960s, this company produced around 200 meticulously handcrafted wooden boats featuring fiberglass overlays.

Presenting a stunning 1959 semi-flat bottom ski boat, this beauty is in impeccable condition. It boasts a powerful 283 Chevy Chris-Craft engine paired with a Velvet drive transmission, comfortably accommodating up to 8 passengers. This classic wooden boat showcases a rich mahogany deck and transom, with a fiberglass overlay enveloping the entire structure.

Equipped with a single 283 Chevy Chris-Craft engine delivering 300 hp, which was expertly rebuilt in 1978, this yacht reaches a thrilling top speed of 50 mph. A custom trailer is included for your convenience. This fresh water-only boat has been stored indoors, ensuring its pristine condition. The Kapur stringers add to its durability, while the throttle, sourced from an M1 tank, has been chrome plated and modified for precise RPM adjustments. The hull features a wood base overlaid with fiberglass, further reinforced with epoxy.

Explore yacht sales in the current boat location and seize the opportunity to buy a yacht that embodies elegance and performance. This remarkable yacht for sale is a true collector's item, perfect for those who appreciate the art of boating.

SPECIFICATIONS

Basic Information

Category:

Motor yachts

Sub category:

Runabout

Model Year:

1959

Year Built:

1959

Country:

United States

Dimensions

LOA:

17' 0" (5.18 mm)

Min Draft:

- (0 mm)

Beam:

8

Max Draft:

- (0 mm)

Speed, Capacities and Weight

Cruise Speed:

30 Knots (30 MPH)

Cruise Speed Range:

0 Kts.

Max Speed:

50 Knots (50 MPH)

Max Speed Range:

0 Kts.

Gross Tonnage:

0 Pounds

Water Capacity:

0 Gallons.

Holding Tank:

0 Gallons

Fuel Capacity:

0 Gallons

Accommodations

Total Cabins:

—

Total Berths:

—

Sleeps:

0

Total Heads:

0

Crew Cabin:

0

Crew Berths:

0

Crew Heads:

—

Hull and Deck Information

Hull Material:

Fiberglass and Plastic Yachts

Deck Material:

Fiberglass

Hull Configuration:

N/A

Hull Designer:

N/A

Interior Designer:

N/A

Engine Information

Engines:

1

Manufacturer:

Chris Craft

Engine Type:

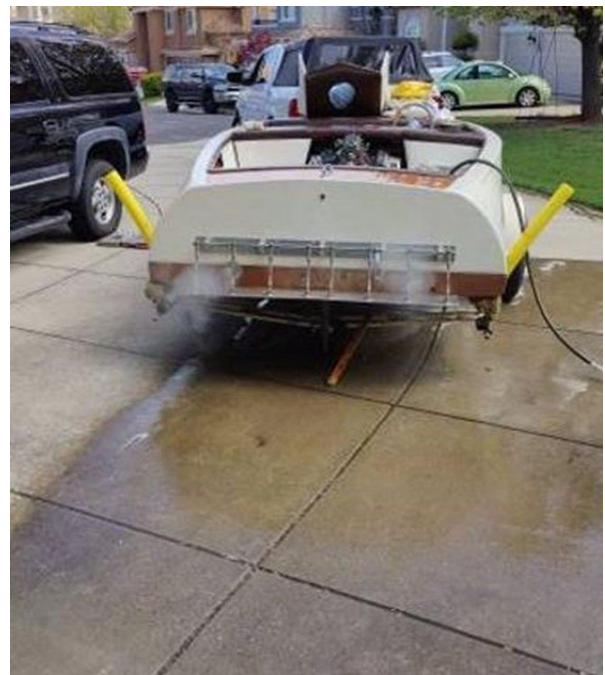
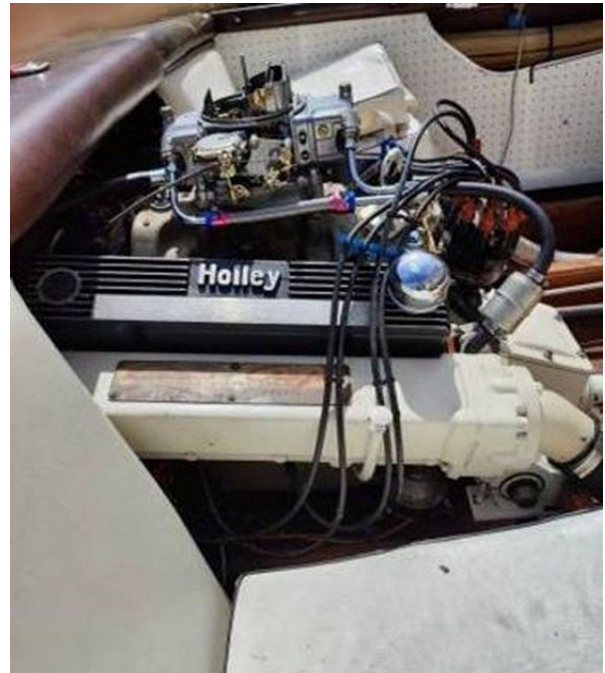
Inboard

Fuel Type:

Gas

GALLERY





CONTACTS

Shestakov Yacht Sales is a brokerage company specializing in the sale and service of yachts worldwide. The company offers services for buying and selling both new and used motor yachts, sailing vessels, and luxury superyachts. They also provide yacht registration, insurance, technical maintenance, crew selection, and charter organization services across the U.S., Canada, Latin America, the Caribbean, and the Bahamas.

The founder and lead broker of the company is Andrey Shestakov, a licensed and certified expert with extensive experience in marine engineering and shipbuilding.

The company has an extensive network of partnerships with major yacht manufacturers worldwide and provides services in multiple languages, including Russian, Ukrainian, Spanish, and English. The office is in Dania Beach, Florida, USA.

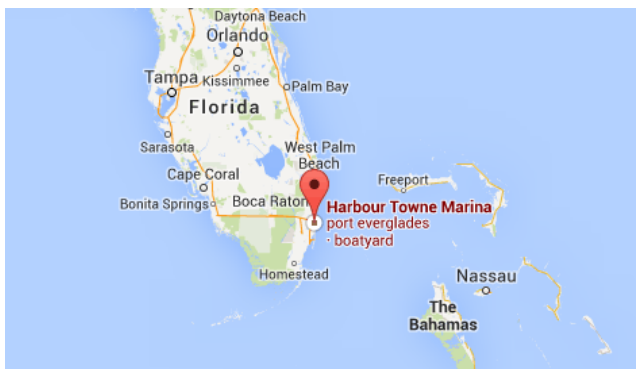
For more information and to view available yachts, you can visit the company's official website: <https://shestakovyachtsales.com>

Contact details

Phone: +1(954)274-4435

Email: andrey@shestakovyachtsales.com

Address



Harbour Towne Marina, 850 NE 3rd St,
STE 213,
Dania, FL 33004