

1990 ALBIN 43 SUNDECK TRAWLER - ALBIN



Builder:

[ALBIN](#)

Year Built:

1990

Model:

43 Sundeck Trawler

Price:

[See on website](#)

Location:

Fernandina Beach, United States

Max Speed:

11.5 Knots (13.23 MPH)

LOA:

43' 0" (13.11 mm)

Beam:

14' 0" (4.42 mm)

Min Draft:

- (0 mm)

Max Draft:

13' 5" (4.0833 mm)

Cruising Speed:

9.5 Knots (10.93 MPH)

TABLE OF CONTENTS

Overview 3

Specifications 4

 Basic Information 4

 Dimensions 4

 Speed, Capacities and Weight 4

 Accommodations 5

 Hull and Deck Information 5

Gallery 6

Contacts 20

OVERVIEW

Indulge in the epitome of luxury and adventure with this stunning 1990 yacht, now available for sale in the United States. With a graceful length of 43 feet and a beam of 14 feet, this semi-displacement beauty is designed to glide effortlessly through the waves, offering a cruising speed of 9.5 knots and a maximum speed of 11.5 knots. Whether you are exploring serene coastlines or embarking on thrilling voyages, this yacht promises an unforgettable experience.

Step aboard and be captivated by the spacious interior that comfortably accommodates up to three guests, making it an ideal choice for intimate getaways or family adventures. The thoughtfully designed layout features two well-appointed heads, ensuring convenience and privacy for all on board. Crafted from durable fiberglass and plastic, the hull and deck materials not only enhance the yacht's aesthetic appeal but also provide exceptional stability and performance.

With a generous water capacity of 150 gallons and a fuel capacity of 166 gallons, this yacht is equipped for extended journeys, allowing you to explore the open waters without a care in the world. Powered by two reliable Cummins inboard engines, fueled by diesel, you can trust in the yacht's performance and efficiency as you navigate your way to new horizons.

As you consider your options in yacht sales in the current boat location, this exquisite vessel stands out as a remarkable opportunity. Whether you are looking to buy a yacht for leisurely escapes or adventurous explorations, this 1990 model combines timeless elegance with modern functionality. Don't miss your chance to own a piece of maritime luxury that promises to create lasting memories on the water. Embrace the allure of the sea and make this yacht your own today!

SPECIFICATIONS

Basic Information

Category:
Motor yachts

Sub category:
Trawler

Model Year:
1990

Year Built:
1990

Country:
United States

Dimensions

LOA:
43' 0" (13.11 mm)

Min Draft:
- (0 mm)

Beam:
14

Max Draft:
13' 5" (13.397 mm)

Speed, Capacities and Weight

Cruise Speed:
9.5 Knots (10.93 MPH)

Cruise Speed Range:
0 Kts.

Max Speed:
11.5 Knots (13.23 MPH)

Max Speed Range:
0 Kts.

Gross Tonnage:
0 Pounds

Water Capacity:
150 Gallons.

Holding Tank:
0 Gallons

Fuel Capacity:
166 Gallons

Accommodations

Total Cabins:

—

Total Berths:

—

Sleeps:

3

Total Heads:

2

Crew Cabin:

0

Crew Berths:

0

Crew Heads:

—

Hull and Deck Information

Hull Material:

Fiberglass and Plastic Yachts

Deck Material:

Fiberglass

Hull Configuration:

Semi-Displacement

Hull Designer:

N/A

Interior Designer:

N/A

Engine Information

Engines:

2

Manufacturer:

Cummins

Engine Type:

Inboard

Fuel Type:

Diesel

GALLERY





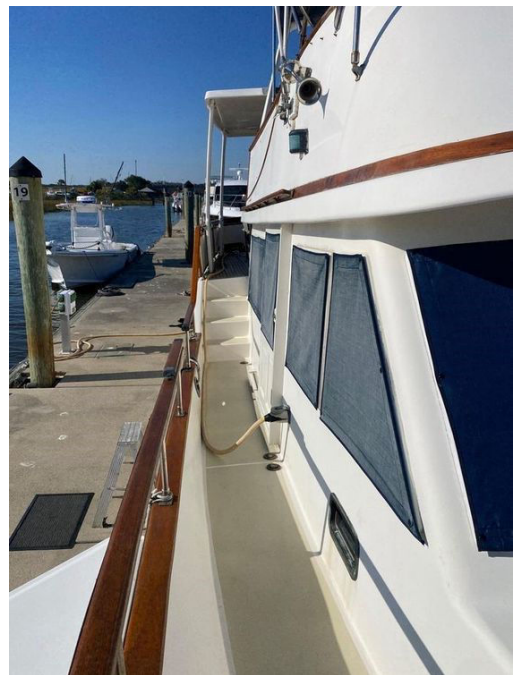




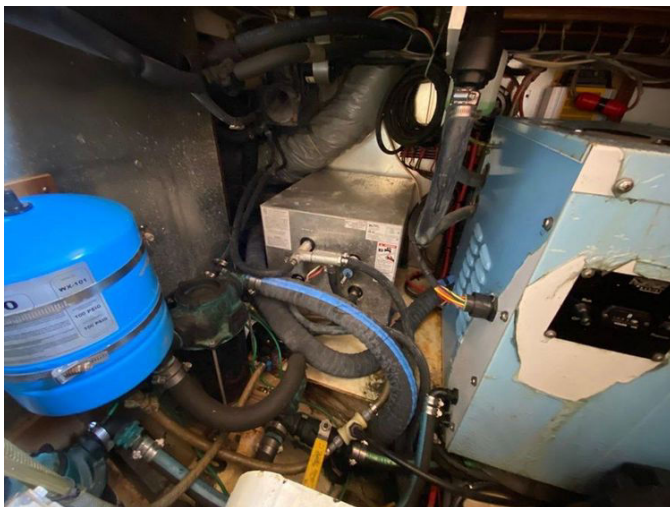




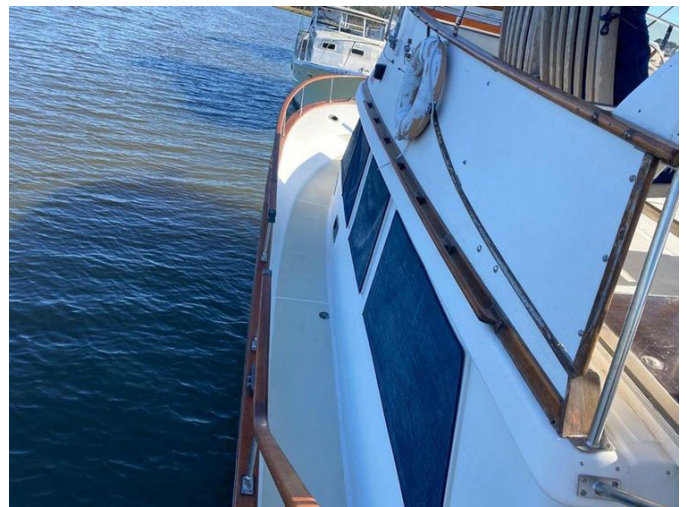
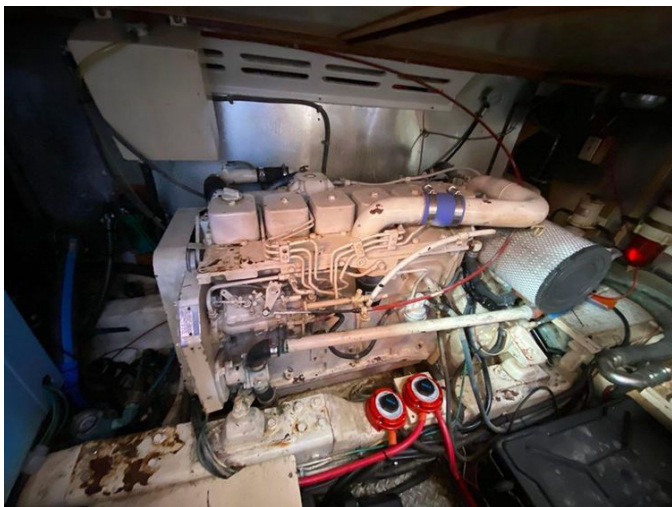


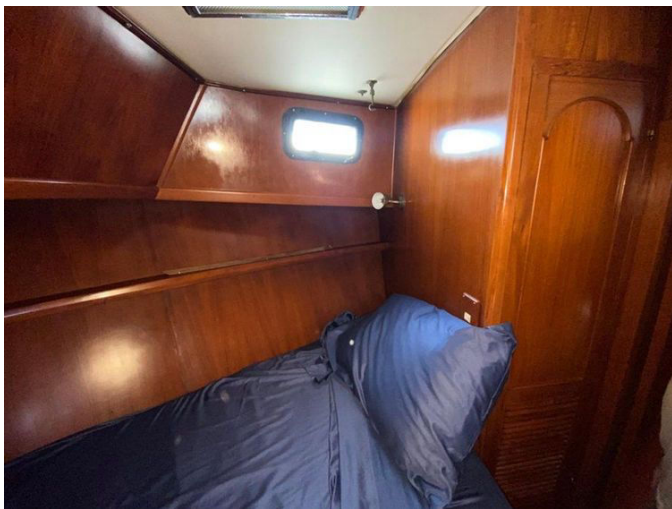












CONTACTS

Shestakov Yacht Sales is a brokerage company specializing in the sale and service of yachts worldwide. The company offers services for buying and selling both new and used motor yachts, sailing vessels, and luxury superyachts. They also provide yacht registration, insurance, technical maintenance, crew selection, and charter organization services across the U.S., Canada, Latin America, the Caribbean, and the Bahamas.

The founder and lead broker of the company is Andrey Shestakov, a licensed and certified expert with extensive experience in marine engineering and shipbuilding.

The company has an extensive network of partnerships with major yacht manufacturers worldwide and provides services in multiple languages, including Russian, Ukrainian, Spanish, and English. The office is in Dania Beach, Florida, USA.

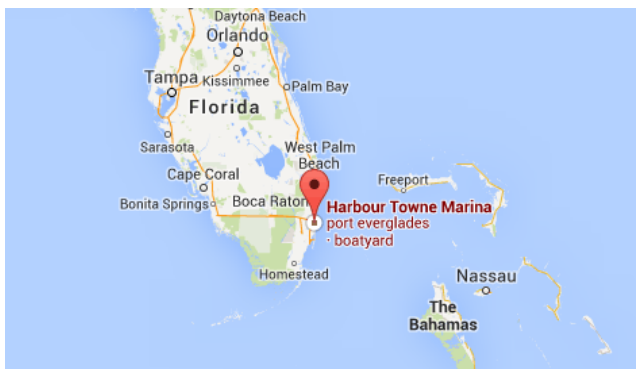
For more information and to view available yachts, you can visit the company's official website: <https://shestakovyachtsales.com>

Contact details

Phone: +1(954)274-4435

Email: andrey@shestakovyachtsales.com

Address



Harbour Towne Marina, 850 NE 3rd St,
STE 213,
Dania, FL 33004