

## 2000 CRUISERS 3672 — CRUISER YACHTS



**Builder:** [CRUISER YACHTS](#)

**Year Built:** 2000

**Model:** N/A

**Price:** \$16,500.00 USD

**Location:** United States

**Max Speed:** 0 Knots (0 MPH)

**LOA:** 38' 0" (11.61 mm)

**Beam:** 0' 0" (0 mm)

**Min Draft:** 0' 0" (0 mm)

**Max Draft:** 0' 0" (0 mm)

**Cruising Speed:** 0 Knots (0 MPH)

Our experienced yacht broker, Andrey Shestakov, will help you choose and buy a yacht that best suits your needs 2000 CRUISERS 3672 — CRUISER YACHTS from our catalogue. Presently, at Shestakov Yacht Sales Inc., we have a wide variety of yachts available on our sale's list. We also work in close contact with all the big yacht manufacturers from all over the world.

If you would like to buy a yacht 2000 CRUISERS 3672 — CRUISER YACHTS or would like help answering any questions concerning purchasing, selling or chartering a yacht, please call **+1(954)274-4435**

---

# TABLE OF CONTENTS

---

TABLE OF CONTENTS	2
SPECIFICATIONS	3
Basic Information	3
Dimensions	3
Speed, Capacities and Weight	4
Accommodations	4
Hull and Deck Information	4
Engine Information	4
PHOTOS	5
CONTACTS	11
Contact details	11
Telephones	11
Office hours	11
Address	11

# SPECIFICATIONS

---

## Overview

---

**\*\*CURRENT PRICE IS A REFERENCE. ALL OFFERS WILL BE CONSIDERED.\*\***

**\*\*GENERAL DESCRIPTION\*\***

The 1997 Cruisers 3672, later known as the 370 Express, boasts a stylish silhouette and a generous interior design. With its broad beam, this yacht feels more spacious than its dimensions suggest. The 3672 is perfect for family outings and weekend escapes.

Don't let this yacht sale pass you by!

**\*\*ACTUAL CONDITION\*\***

This attractive express cruiser has been idle for a few years and requires some mechanical attention. Visually, she presents well but could benefit from a thorough cleaning. We are uncertain about the extent of repairs needed for the engines. It is reported that one engine was functioning properly during its last use a few years back. Both engines turned over, but neither started when we attempted to retrieve the vessel. We encourage you to inspect and place your bid.

**\*\*EQUIPMENT\*\***

Please note that a trailer is not included in this yacht for sale.

Nationwide transportation options are available through CertifiedMarineTransport, and you can request a transportation quote. Custom cradles and shipping to ports for international transport can also be arranged. For logistics and quotes, please reach out to our Mendon, MA office.

**\*\*ENGINE(S) CONDITION\*\***

We advise you to review the Motors and Machinery Disclaimer.

**\*\*TRANSPORTATION\*\***

Nationwide transport services are available through CertifiedMarineTransport.com. Custom cradles and shipping to ports for overseas transport can also be provided. For logistics and quotes, please contact our Mendon, MA office.

**\*\*MOTORS AND MACHINERY DISCLAIMER\*\***

No claims can be made regarding the condition of motors, engines, or machinery. While a photo of the engine compartment may be available, it is the buyer's responsibility to inspect and assess their actual condition.

Please do not assume that accessories or equipment for this unit are stored elsewhere. This yacht is being sold as-is. Make your offer or bid based on your inspection of the vessel.

**\*\*Disclaimer:\*\*** The Company presents the details of this yacht in good faith but cannot guarantee the accuracy of this information or the vessel's condition. Buyers should verify any details they wish to confirm. This yacht is offered subject to prior sale, price changes, or withdrawal without notice.

All marine products, whether owned or brokered by Certified Sales, Inc. or its affiliates, are sold AS-IS, WHERE-IS, WITHOUT ANY WARRANTY OR GUARANTEE, EXPRESS OR IMPLIED. NO WARRANTIES OF MERCHANTABILITY OR FITNESS ARE PROVIDED. No verbal agreements will be honored in the sale of this marine product.

## Basic Information

---

**Category:** Cruisers  
**Model Year:** 2000

**Sub category:**  
**Year Built:** 2000

**Country:** United States

## Dimensions

---

**LOA:** 38' 0" (11.61 mm)

**Beam:** 0

**Min Draft:** 0' 0" (0 mm)

**Max Draft:** 0' 0" (0 mm)

## Speed, Capacities and Weight

---

**Cruise Speed:** 0 Knots (0 MPH)

**Cruise Speed Range:** 0 Kts.

**Max Speed:** 0 Knots (0 MPH)

**Max Speed Range:** 0 Kts.

**Gross Tonnage:** 0 Pounds

**Water Capacity:** 0 Gallons.

**Holding Tank:** 0 Gallons

**Fuel Capacity:** 0 Gallons

## Accommodations

---

**Total Cabins:** 0

**Total Berths:** 0

**Sleeps:** 0

**Total Heads:** 0

**Crew Cabin:** 0

**Crew Berths:** 0

**Crew Heads:** 0

## Hull and Deck Information

---

**Hull Material:** Fiberglass and Plastic Yachts

**Deck Material:** Fiberglass

**Hull Configuration:** N/A

**Hull Designer:** N/A

**Interior Designer:** N/A

## Engine Information

---

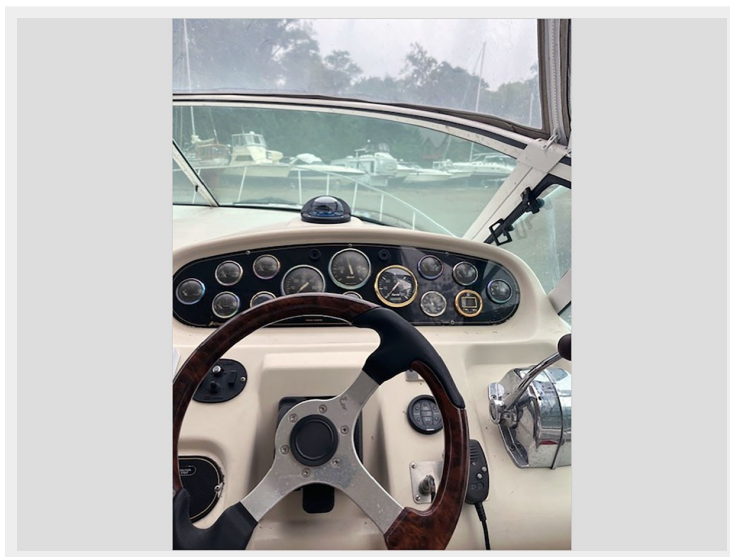
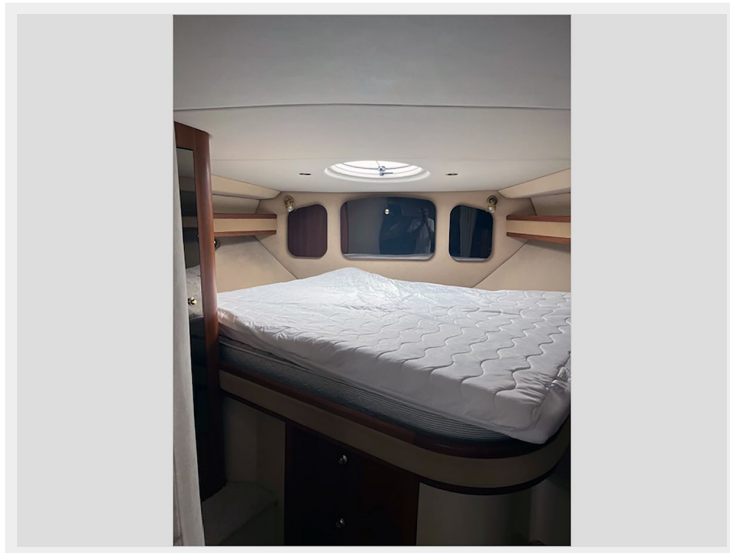
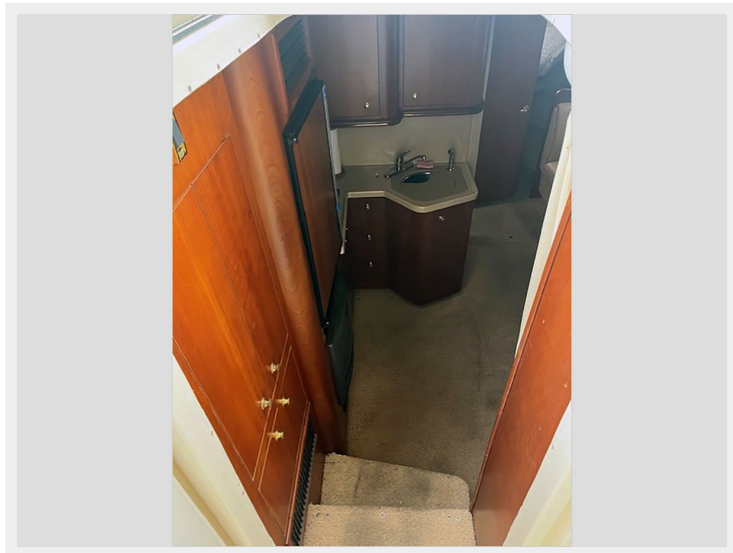
**Engines:** 1

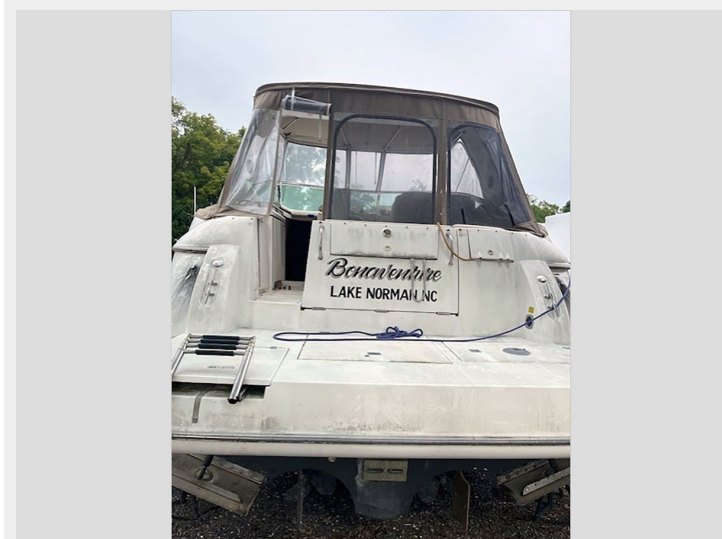
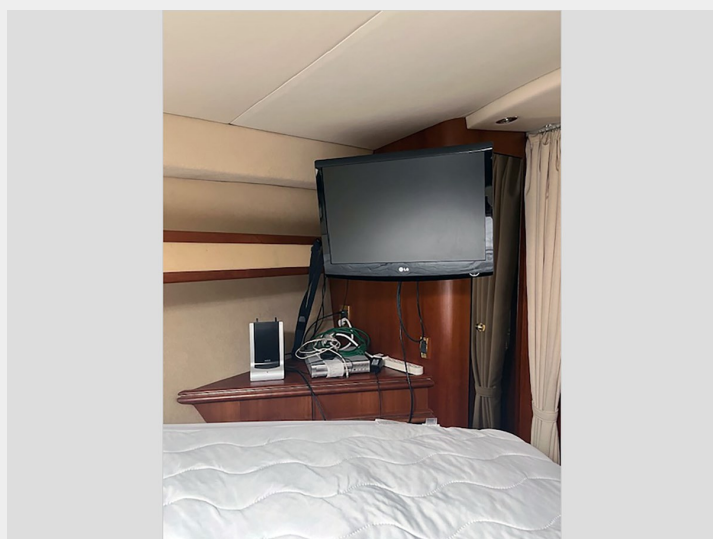
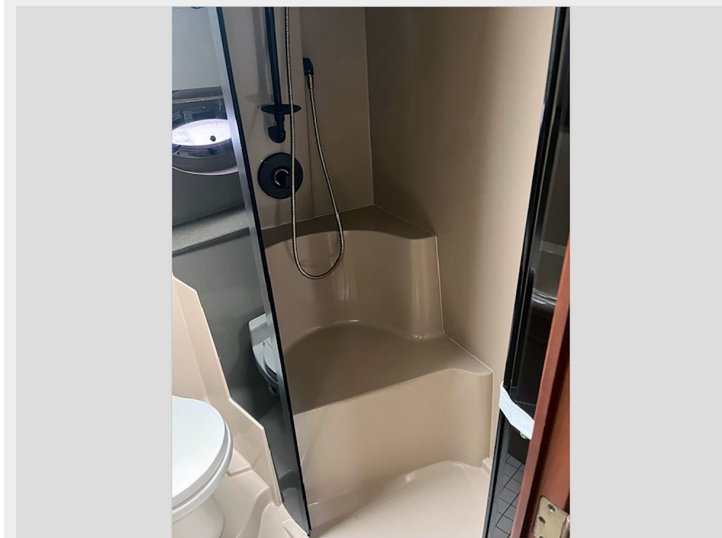
**Manufacturer:** Mercruiser

**Engine Type:**

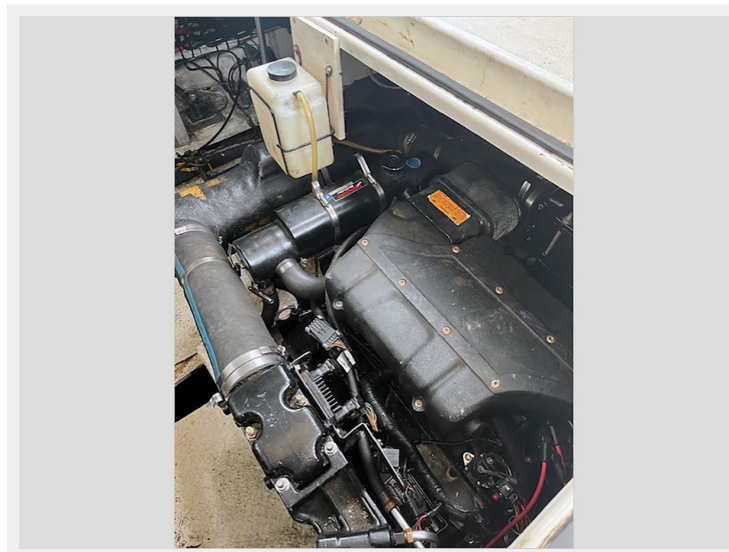
**Fuel Type:**

# PHOTOS

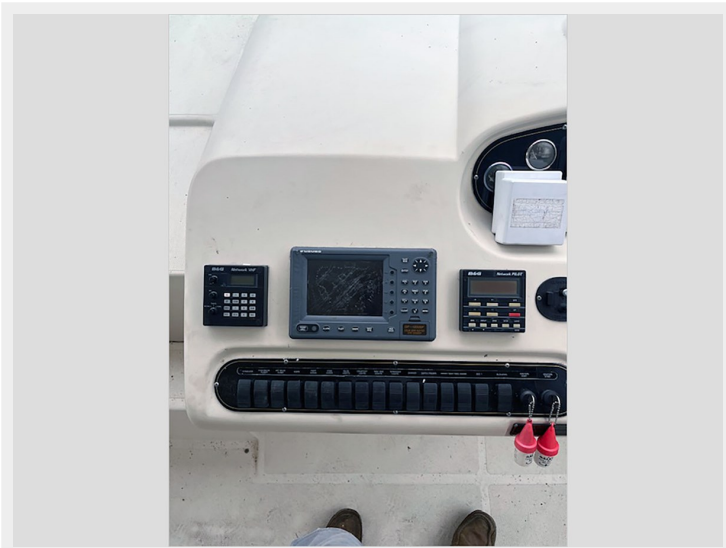
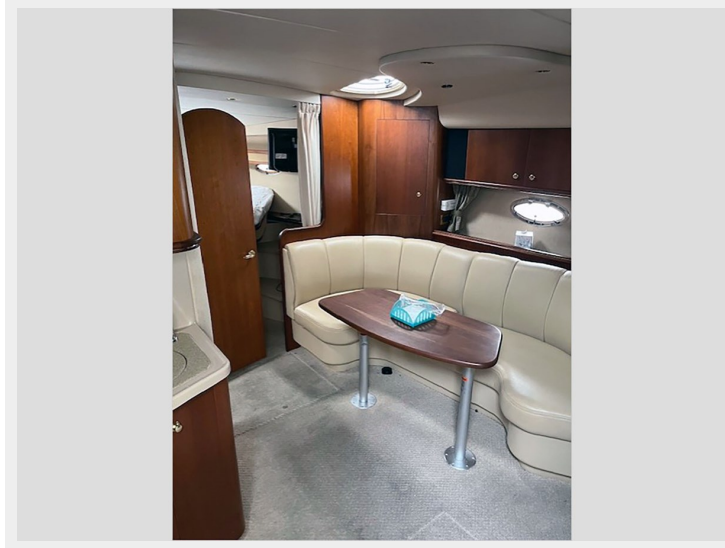


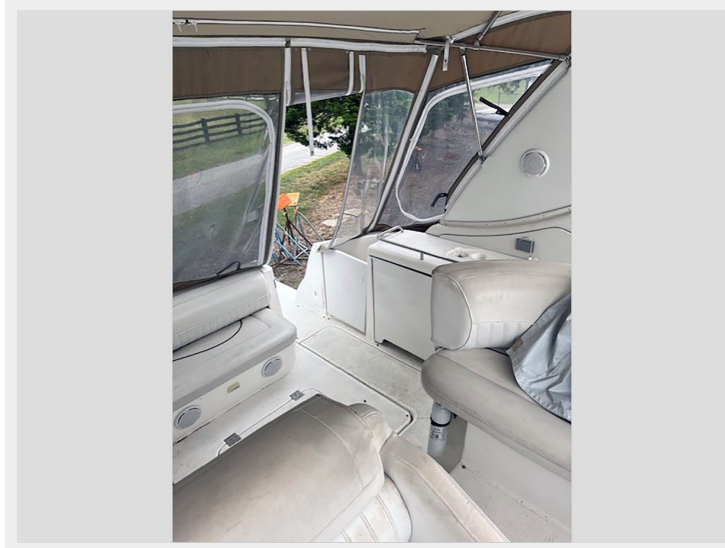
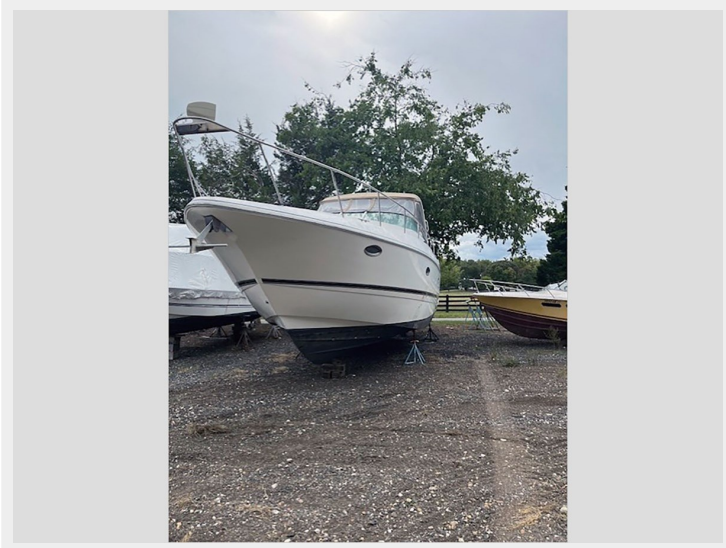




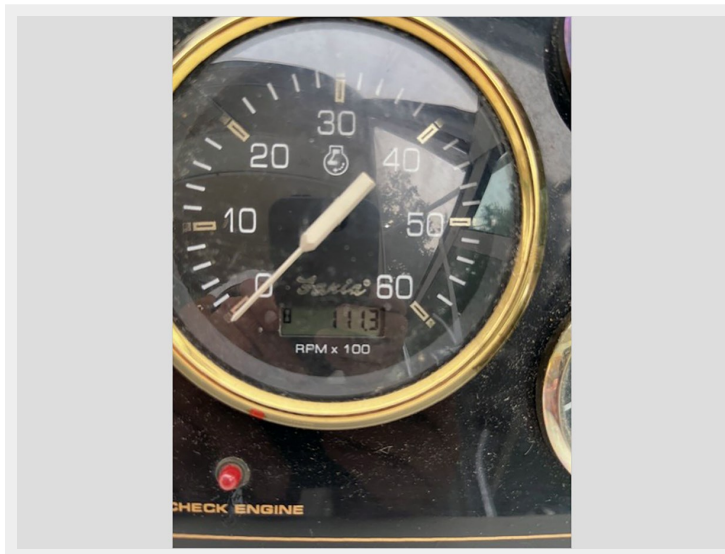
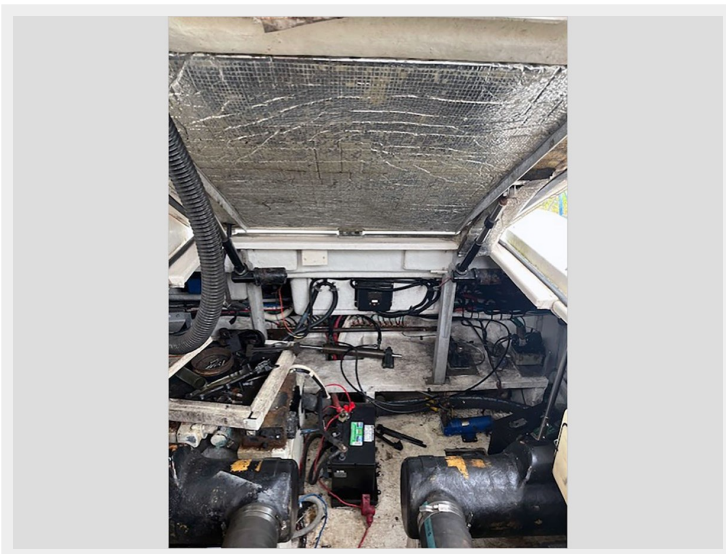
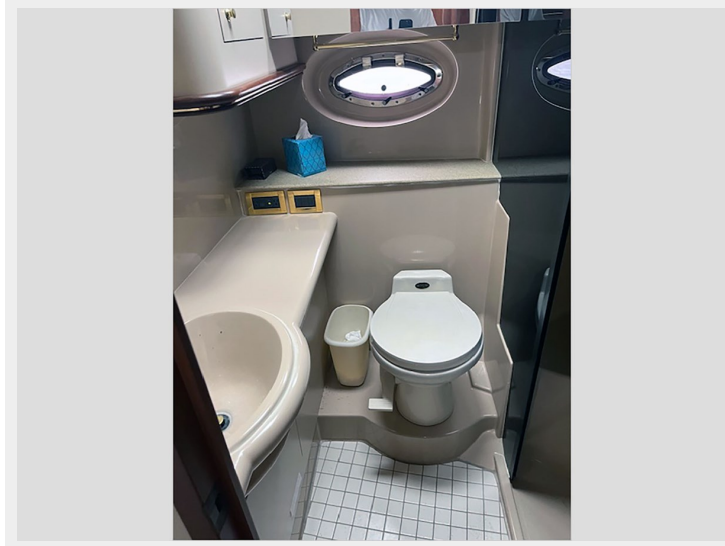
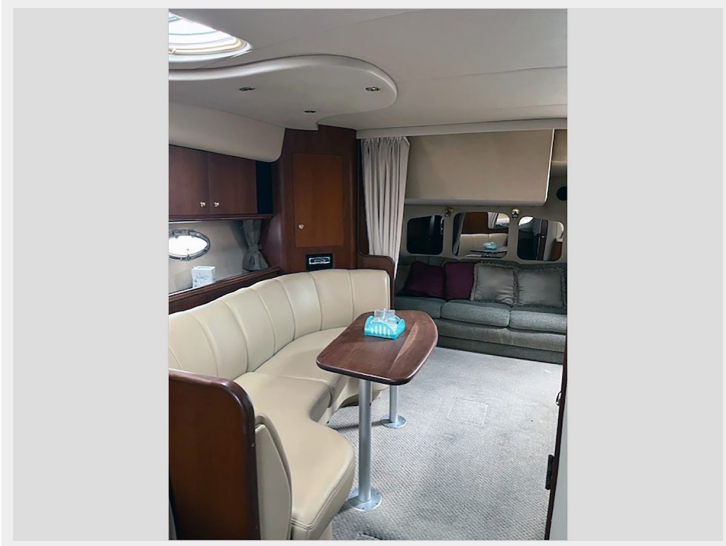












# CONTACTS

---

Andrey Shestakov, leading yacht broker of the sales department of Shestakov Yacht Sales Inc. Shestakov Yacht Sales Inc., the official representative of the Miami/Fort Lauderdale FL headquarters.

## Contact details

---

Email: [andrey@shestakovyachtsales.com](mailto:andrey@shestakovyachtsales.com)

Web: [shestakovyachtsales.com/en/](http://shestakovyachtsales.com/en/)

## Telephones

---

USA: +1(954)274-4435

## Office hours

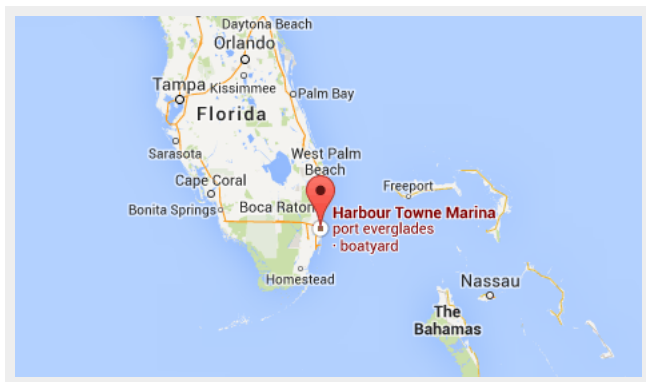
---

Monday – Saturday: **9:00 - 21:00** EDT

Sunday: **closed**

## Address

---



Harbour Towne Marina, 850 NE 3rd St, STE 213,  
Dania, FL 33004