

2000 CRUISERS YACHTS 3672 EXPRESS - CRUISERS YACHTS



Builder:

[CRUISERS YACHTS](#)

Year Built:

2000

Model:

3672 Express

Price:

[See on website](#)

Location:

Fernandina Beach, United States

Max Speed:

0 Knots (0 MPH)

LOA:

40' 0" (12.24 mm)

Beam:

13' 0" (3.96 mm)

Min Draft:

- (0 mm)

Max Draft:

9' 10" (3 mm)

Cruising Speed:

0 Knots (0 MPH)

TABLE OF CONTENTS

Overview	4
Specifications	5
Basic Information	5
Dimensions	5
Speed, Capacities and Weight	5
Accommodations	6
Hull and Deck Information	6
Gallery	7
Contacts	16

OVERVIEW

Indulge in the epitome of luxury and adventure with this stunning 2000 model yacht, now available for sale in the United States. With a sleek length of 40 feet and a generous beam of 13 feet, this vessel is designed for both performance and comfort, making it an ideal choice for those looking to buy a yacht that promises unforgettable experiences on the water.

As you step aboard, you are greeted by a beautifully crafted interior that accommodates up to three guests in serene comfort. The thoughtfully designed layout ensures that every inch of space is utilized, providing a cozy retreat after a day of exploration. The yacht features a well-appointed head, ensuring convenience and privacy for all aboard.

The deep Vee hull configuration, crafted from durable fiberglass and plastic, not only enhances the yacht's aesthetic appeal but also ensures a smooth and stable ride, even in choppy waters. Powered by two robust Mercruiser inboard engines, this yacht delivers impressive performance, allowing you to glide effortlessly across the waves while enjoying the thrill of the open sea.

With a fuel capacity of 300 gallons and a water capacity of 70 gallons, this yacht is equipped for extended voyages, making it perfect for weekend getaways or longer excursions. Whether you're anchoring in a secluded cove or hosting friends for a sunset cruise, the spacious deck, also made of fiberglass, provides ample room for relaxation and entertainment.

This yacht is not just a vessel; it's a lifestyle. Imagine sipping cocktails on the deck as the sun sets, or enjoying a peaceful night under the stars. With its combination of elegance and functionality, this yacht is a true gem in the current boat location, making it a prime candidate for yacht sales in the area.

Don't miss the opportunity to own this exquisite yacht. Whether you are a seasoned sailor or a first-time buyer, this vessel is ready to take you on your next adventure. Explore the possibilities and make this luxurious yacht your

own today!

SPECIFICATIONS

Basic Information

Category:
Motor yachts

Sub category:
Cruisers

Model Year:
2000

Year Built:
2000

Country:
United States

Dimensions

LOA:
40' 0" (12.24 mm)

Min Draft:
- (0 mm)

Beam:
13

Max Draft:
9' 10" (9.843 mm)

Speed, Capacities and Weight

Cruise Speed:
0 Knots (0 MPH)

Cruise Speed Range:
0 Kts.

Max Speed:
0 Knots (0 MPH)

Max Speed Range:
0 Kts.

Gross Tonnage:
0 Pounds

Water Capacity:
70 Gallons.

Holding Tank:
0 Gallons

Fuel Capacity:
300 Gallons

Accommodations

Total Cabins:

—

Total Berths:

—

Sleeps:

3

Total Heads:

1

Crew Cabin:

0

Crew Berths:

0

Crew Heads:

—

Hull and Deck Information

Hull Material:

Fiberglass and Plastic Yachts

Deck Material:

Fiberglass

Hull Configuration:

Deep Vee

Hull Designer:

N/A

Interior Designer:

N/A

Engine Information

Engines:

2

Manufacturer:

Mercruiser

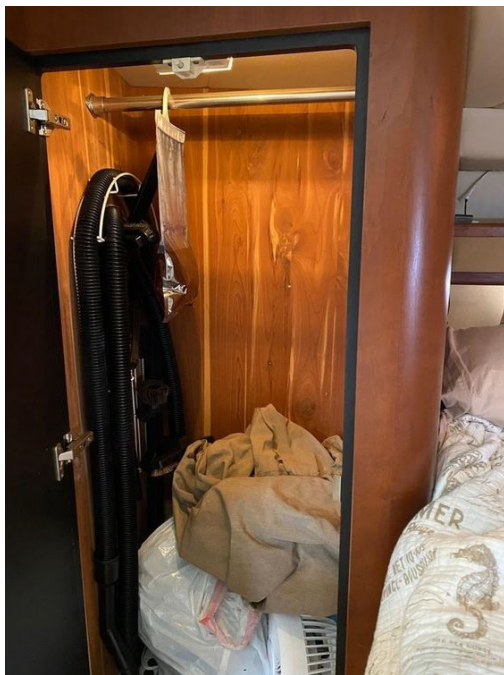
Engine Type:

Inboard

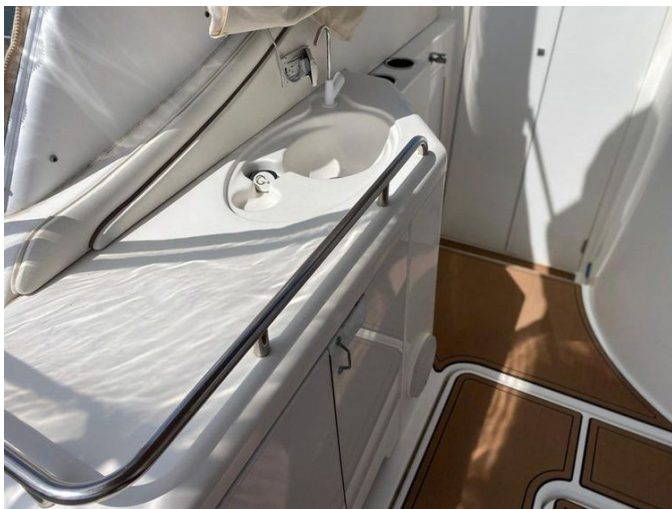
Fuel Type:

Gas

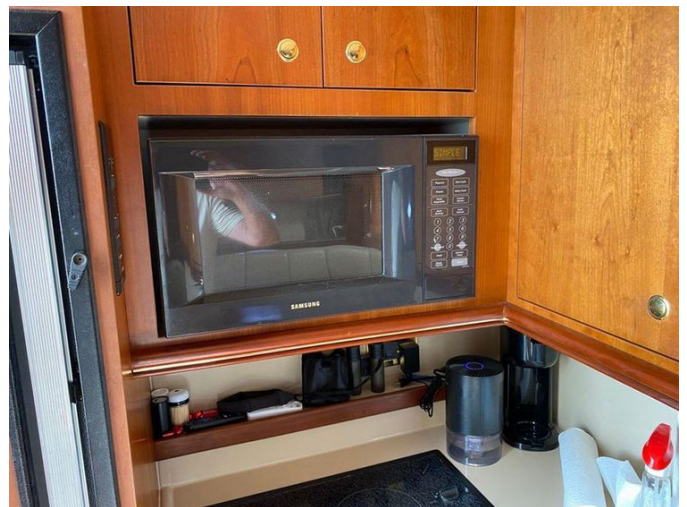
GALLERY



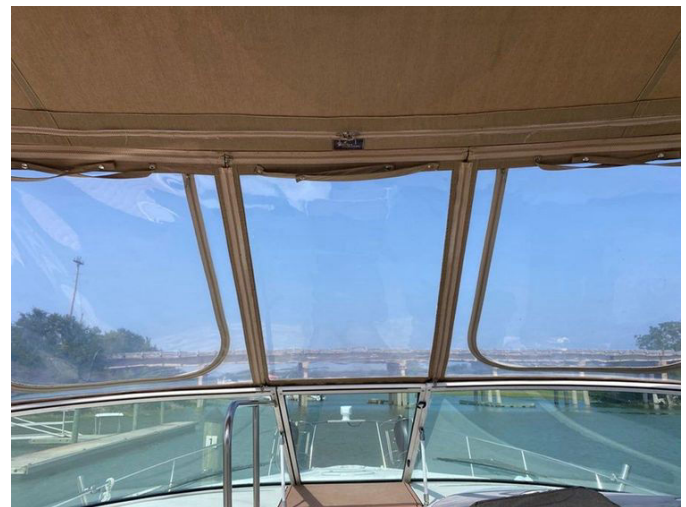
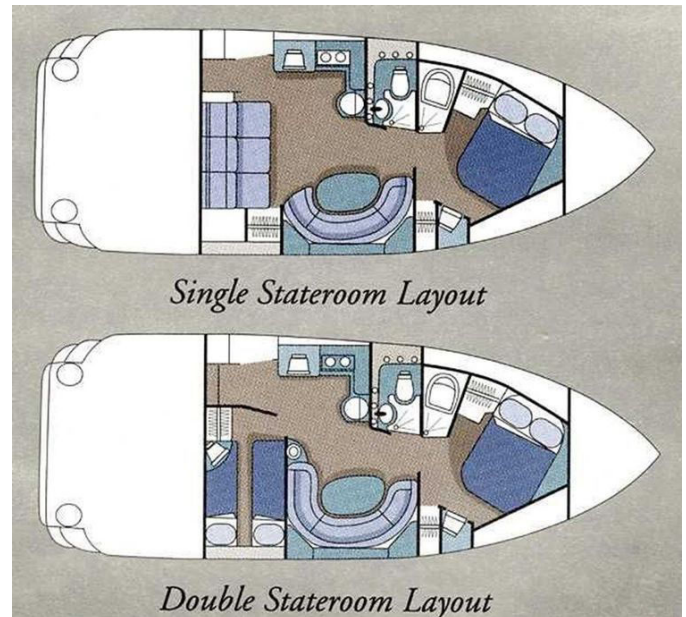








SPECIFICATIONS	
Measurements	
L.O.A. with Integrated Pulpit and Swim Platform	40'2" / 12.2 m
L.O.A. with Integrated Swim Platform Less Pulpit	37'6" / 11.4 m
Beam	13'0" / 4.0 m
Dry Weight Gas (lbs)	18,000 / 8,154 kg
Full Weight Gas (lbs)	20,500 / 9,286 kg
Dry Weight Diesel (lbs)	19,000 / 8,607 kg
Full Weight Diesel (lbs)	21,500 / 9,740 kg
Fresh Water Capacity (U.S. Gallons)	70 / 265 L
Fuel Capacity (U.S. Gallons)	300 / 1134 L
Holding Tank Capacity (U.S. Gallons)	55 / 210 L
Cabin Headroom (minimum)	6'6" / 2.0 m
Height - Keel to Top of Windshield	11'1" / 3.38 m
Height - Keel to Top of Arch	13'3" / 4.03 m
Draft: Hull / with Engine	24" / 33" / 0.61 / 0.84 m
Dead Rise	16 Degrees
Bridge Clearance (w/Arch)	11'3" / 3.43 m
Bridge Clearance (w/o Arch)	9'5" / 2.9 m
Sleeping Accommodations	5 persons
ENGINES: GAS — V-DRIVE	
MerCruiser	
T 7.4 MPI 310 HP (230 KW) 1B	
T 7.4 Horizon 380 HP (283 KW) 1B	
T 8.2 MPI 400 HP (298 KW) 1B	
Crusader	
T 7.4 MP 320 HP (239 KW) 1B	
T 7.4 HO MP 385 HP (287 KW) 1B	
T 8.2 MP 405 HP (302 KW) 1B	









CONTACTS

Shestakov Yacht Sales is a brokerage company specializing in the sale and service of yachts worldwide. The company offers services for buying and selling both new and used motor yachts, sailing vessels, and luxury superyachts. They also provide yacht registration, insurance, technical maintenance, crew selection, and charter organization services across the U.S., Canada, Latin America, the Caribbean, and the Bahamas.

The founder and lead broker of the company is Andrey Shestakov, a licensed and certified expert with extensive experience in marine engineering and shipbuilding.

The company has an extensive network of partnerships with major yacht manufacturers worldwide and provides services in multiple languages, including Russian, Ukrainian, Spanish, and English. The office is in Dania Beach, Florida, USA.

For more information and to view available yachts, you can visit the company's official website: <https://shestakovyachtsales.com>

Contact details

Phone: +1(954)274-4435

Email: andrey@shestakovyachtsales.com

Address



Harbour Towne Marina, 850 NE 3rd St,
STE 213,
Dania, FL 33004