

## 2000 WELLCRAFT - WELLCRAFT



**Builder:**

[WELLCRAFT](#)

**Year Built:**

2000

**Model:**

N/A

**Price:**

[See on website](#)

**Location:**

Saint George, United States

**Max Speed:**

0 Knots (0 MPH)

**LOA:**

30' 0" (9.17 mm)

**Beam:**

- (0 mm)

**Min Draft:**

- (0 mm)

**Max Draft:**

- (0 mm)

**Cruising Speed:**

0 Knots (0 MPH)

# TABLE OF CONTENTS

**Overview ..... 4**

**Specifications ..... 5**

    Basic Information ..... 5

    Dimensions ..... 5

    Speed, Capacities and Weight ..... 5

    Accommodations ..... 6

    Hull and Deck Information ..... 6

**Gallery ..... 7**

**Contacts ..... 13**

# OVERVIEW

---

"CURRENT PRICE" IS A REFERENCE. ALL OFFERS WILL BE CONSIDERED.

## GENERAL DESCRIPTION

The Scarab 302 Sport is a premium center console designed for speed, maneuverability, and offshore fishing adventures. This vessel beautifully combines Wellcraft's legacy of racing and leisure boating. Built on a robust hull, it ensures you reach the fishing grounds ahead of the competition. Don't miss the opportunity to acquire this Wellcraft Scarab 302 Sport, now available for yacht sale.

## ACTUAL CONDITION

This yacht performed admirably during pickup, and all systems seem to be functioning well. There are some cosmetic scrapes on the hull and signs of general wear. The decks exhibit softness in several areas. While this is a solid hull, it does require some attention.

Take a closer look and consider making your bid.

## EQUIPMENT

Please note that a trailer is not included in this yacht sale.

Nationwide transportation options are available through CertifiedMarineTransport, providing you with a transportation quote. Custom cradles and shipping to ports for international transport can also be arranged. For logistics and quotes, please reach out to our Mendon, MA office.

Trailers can be sourced through our St. George, SC office.

## ENGINE(S) CONDITION

Please refer to the Motors and Machinery Disclaimer.

## TRANSPORTATION

Nationwide transport services are offered through CertifiedMarineTransport.com. Custom cradles and shipping to ports for

overseas transport are also available. For logistics and quotes, please contact our Mendon, MA office.

#### MOTORS AND MACHINERY DISCLAIMER

No guarantees can be made regarding the condition of motors, engines, or machinery. While images of the engine compartment and machinery may be provided, it is the buyer's responsibility to inspect and assess their actual condition.

Do not assume that accessories or equipment for this unit are in storage. This yacht is being sold as-is. Please make an offer or bid based on your assessment during your viewing.

Disclaimer: The Company presents the details of this vessel in good faith but cannot assure the accuracy of this information or the vessel's condition. Buyers should verify any details they wish to confirm. This yacht is offered subject to prior sale, price changes, or withdrawal without notice.

All marine products, whether owned or brokered by Certified Sales, Inc. or its affiliates, are sold AS-IS, WHERE-IS, WITHOUT ANY WARRANTY OR GUARANTEE, EXPRESS OR IMPLIED. NO WARRANTIES OF MERCHANTABILITY OR FITNESS ARE PROVIDED. No verbal agreements will be recognized in the sale of this marine product.

# SPECIFICATIONS

---

## Basic Information

---

**Category:**  
Motor yachts

**Sub category:**  
Cruisers

**Model Year:**  
2000

**Year Built:**  
2000

**Country:**  
United States

## Dimensions

---

**LOA:**  
30' 0" (9.17 mm)

**Min Draft:**  
- (0 mm)

**Beam:**  
0

**Max Draft:**  
- (0 mm)

## Speed, Capacities and Weight

---

**Cruise Speed:**  
0 Knots (0 MPH)

**Cruise Speed Range:**  
0 Kts.

**Max Speed:**  
0 Knots (0 MPH)

**Max Speed Range:**  
0 Kts.

**Gross Tonnage:**  
0 Pounds

**Water Capacity:**  
0 Gallons.

**Holding Tank:**  
0 Gallons

**Fuel Capacity:**  
0 Gallons

## Accommodations

---

**Total Cabins:**

—

**Total Berths:**

—

**Sleeps:**

0

**Total Heads:**

0

**Crew Cabin:**

0

**Crew Berths:**

0

**Crew Heads:**

—

## Hull and Deck Information

---

**Hull Material:**

Fiberglass and Plastic Yachts

**Deck Material:**

Fiberglass

**Hull Configuration:**

N/A

**Hull Designer:**

N/A

**Interior Designer:**

N/A

## Engine Information

---

**Engines:**

1

**Manufacturer:**

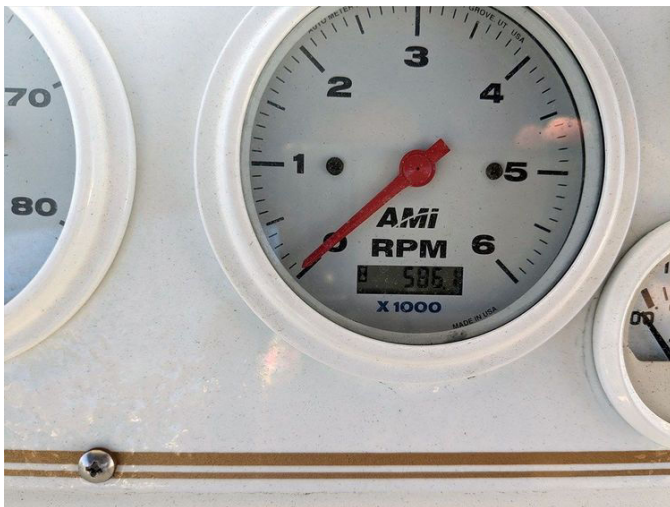
Mercury

**Engine Type:**

**Fuel Type:**



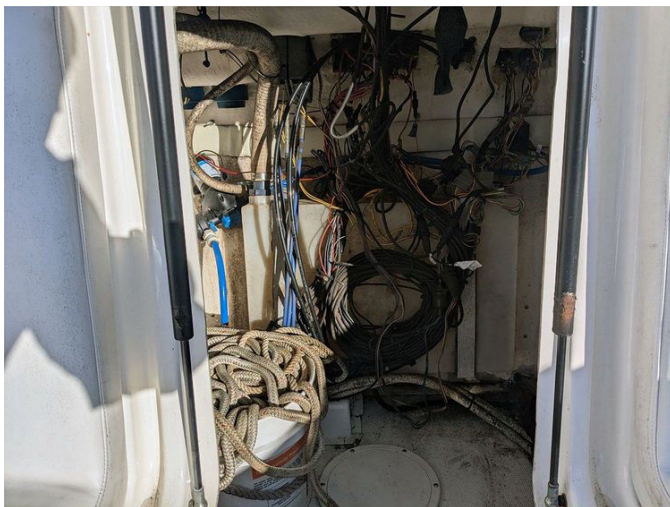
# GALLERY



















# CONTACTS

---

Shestakov Yacht Sales is a brokerage company specializing in the sale and service of yachts worldwide. The company offers services for buying and selling both new and used motor yachts, sailing vessels, and luxury superyachts. They also provide yacht registration, insurance, technical maintenance, crew selection, and charter organization services across the U.S., Canada, Latin America, the Caribbean, and the Bahamas.

The founder and lead broker of the company is Andrey Shestakov, a licensed and certified expert with extensive experience in marine engineering and shipbuilding.

The company has an extensive network of partnerships with major yacht manufacturers worldwide and provides services in multiple languages, including Russian, Ukrainian, Spanish, and English. The office is in Dania Beach, Florida, USA.

For more information and to view available yachts, you can visit the company's official website: <https://shestakovyachtsales.com>

## Contact details

---

**Phone:** +1(954)274-4435

**Email:** [andrey@shestakovyachtsales.com](mailto:andrey@shestakovyachtsales.com)

## Address

---



Harbour Towne Marina, 850 NE 3rd St,  
STE 213,  
Dania, FL 33004