

## 2007 FORMULA 34 PC — FORMULA BOATS



**Builder:** [Formula Boats](#)

**Year Built:** 2007

**Model:** 34 PC

**Price:** \$144,999.00 USD

**Location:** United States

**Max Speed:** 39.1 Knots (45 MPH)

**LOA:** 34' 0" (10.36 mm)

**Beam:** 11' 0" (3.48 mm)

**Min Draft:** 0' 0" (0 mm)

**Max Draft:** 9' 10" (3 mm)

**Cruising Speed:** 30.41 Knots (34.99 MPH)

Our experienced yacht broker, Andrey Shestakov, will help you choose and buy a yacht that best suits your needs [2007 Formula 34 PC — Formula Boats](#) from our catalogue. Presently, at Shestakov Yacht Sales Inc., we have a wide variety of yachts available on our sale's list. We also work in close contact with all the big yacht manufacturers from all over the world.

If you would like to buy a yacht [2007 Formula 34 PC — Formula Boats](#) or would like help answering any questions concerning purchasing, selling or chartering a yacht, please call **+1(954)274-4435**

# TABLE OF CONTENTS

---

TABLE OF CONTENTS	2
SPECIFICATIONS	3
Basic Information	3
Dimensions	3
Speed, Capacities and Weight	4
Accommodations	4
Hull and Deck Information	4
Engine Information	4
PHOTOS	5
CONTACTS	10
Contact details	10
Telephones	10
Office hours	10
Address	10

# SPECIFICATIONS

---

## Overview

---

2007 Formula 34 PC

THIS STUNNING, TWO-OWNER, NEARLY PRISTINE FORMULA 34 PC IS READY FOR ITS NEXT ADVENTURE! THE CURRENT OWNERS HAVE BEEN DILIGENT IN MAINTAINING THIS VESSEL SINCE DAY ONE! "MIDNIGHT RAIN" IS PREPARED FOR IMMEDIATE CRUISING! WITH DIESEL HEAT AND AIR CONDITIONING, THIS YACHT IS IDEAL FOR YEAR-ROUND USE! HAVING BEEN KEPT IN FRESHWATER UNTIL LAST YEAR, THIS IS TRULY THE FINEST '07 34 PC AVAILABLE IN THE MARKET TODAY!

ADDED IN 4/2019: TWO NEW CHARLES ISOLATION TRANSFORMERS, AROUND \$6K INVESTED!

ADDED IN 1/2020: NEW CANVAS AND CARPET, COSTING APPROXIMATELY \$10K!

If you seek a truly turnkey option in a mid-thirties high-performance cruiser, your search ends here! The meticulous care of "MIDNIGHT RAIN" is evident from the moment you step aboard. The expansive swim platform offers a safe boarding area, doubles as a tender storage space, and is perfect for relaxing with your feet in the water. A custom SeaWise Davit system is included with the yacht. The transom features shore power inlets to starboard, a spacious storage locker at the centerline, and ample cleats for securing the vessel or a tender.

Stepping into the cockpit, you'll find a generous U-shaped seating area to starboard, a wet bar to port complete with an Isotherm stainless steel fridge/freezer, and two access points to the engine room. A small hatch over the genset and an assisted lift main hatch over the aft seating provide excellent engine access for maintenance. Formula has ensured that there are plenty of stainless steel cup holders throughout the cockpit. A stylish radar arch serves as a central attachment point for the bimini top, which also houses lighting and speakers. The cockpit is equipped with a summer cover, a heavy-duty winter cover, and full surround canvas for cooler weather use. A heating duct from the diesel furnace is also plumbed into the cockpit. The helm station, located to starboard, offers the helmsman an exceptional view and complete control for effortless navigation.

On the helm, you will find all the essentials: navigation electronics, stereo controls, engine gauge packages, trim tab controls, bow thruster controls, spotlight controls, and anchor windlass

controls with a chain counter system! What more could you desire?

Descending from the cockpit, you enter a salon that showcases the immaculate care this vessel has received. While the exterior gleams, the interior appears almost untouched! "MIDNIGHT RAIN" features a beautiful cherry and cream interior that radiates elegance. The spacious and comfortable layout below decks makes it an ideal couples' yacht, with additional sleeping space in the aft convertible berth, and the cockpit seating can also transform into a berth when the weather is warm. The forward owner's berth is a classic island queen, a highly sought-after feature. Generous hanging lockers on either side and under-berth storage provide ample space for extended cruising.

The large head/shower to port is well-appointed with a vacuflush toilet, Corian countertop, stainless sink, and storage in both the medicine cabinet and under-sink cabinet. The shower features a plexiglass folding door, enhancing the stall-like experience.

The galley, also to port, is fully equipped with a two-burner electric stove, stainless steel sink, microwave, and an Isotherm stainless steel fridge/freezer combo. The Corian countertops are in excellent condition, showing no signs of wear. To starboard, the dinette comfortably seats four and offers a great view of the TV unit located forward of the galley. The salon floor includes two hatches: one for accessing the Lifeline 8D house batteries and the other for the MarineAire air conditioning unit (2018). The controls for the AC unit are conveniently located on the starboard side of the salon, alongside the Wallas Diesel Furnace controls, Magnum Inverter Remote Panel, CO detector, and Kenwood stereo.

Moving aft from the salon, you will find the aft seating area, which converts into a berth for two. A sizable hanging locker accompanies this aft berth, along with under-seat storage.

Finally, the engine room is clean, well-maintained, and offers easy access for servicing. With low hours (P-941, S-938) on the Volvo 8.1 Gi engines, you can expect many more years of reliable performance. The owner has ensured that the engines, genset, and outdrives have been professionally serviced since new. This is the type of owner you want when considering a yacht for sale! A separate diesel fill and tank (12 Gal) are located to port in the engine room, supplying the diesel furnace and providing ample capacity for extended use.

In summary, "MIDNIGHT RAIN" is exceptionally equipped for cruising anywhere, anytime! Don't miss this chance to own a magnificent vessel! The Formula name is synonymous with quality, and "MIDNIGHT RAIN" exemplifies that standard.

Exclusions: Owner's personal items. Fully appointed galley included.

## Basic Information

---

**Category:**

**Model Year:** 2007

**Sub category:**

**Year Built:** 2007

**Country:** United States

## Dimensions

---

**LOA:** 34' 0" (10.36 mm)

**Beam:** 11

**Min Draft:** 0' 0" (0 mm)

**Max Draft:** 9' 10" (9.843 mm)

---

## Speed, Capacities and Weight

---

**Cruise Speed:** 30.41 Knots (34.99 MPH)

**Cruise Speed Range:** 0 Kts.

**Max Speed:** 39.1 Knots (45 MPH)

**Max Speed Range:** 0 Kts.

**Gross Tonnage:** 0 Pounds

**Water Capacity:** 55 Gallons.

**Holding Tank:** 0 Gallons

**Fuel Capacity:** 206 Gallons

---

## Accommodations

---

**Total Cabins:** 0

**Total Berths:** 0

**Sleeps:** 0

**Total Heads:** 1

**Crew Cabin:** 0

**Crew Berths:** 0

**Crew Heads:** 0

---

## Hull and Deck Information

---

**Hull Material:** N/A

**Deck Material:** N/A

**Hull Configuration:** N/A

**Hull Designer:** N/A

**Interior Designer:** N/A

---

## Engine Information

---

**Engines:** 2

**Manufacturer:** Volvo Penta

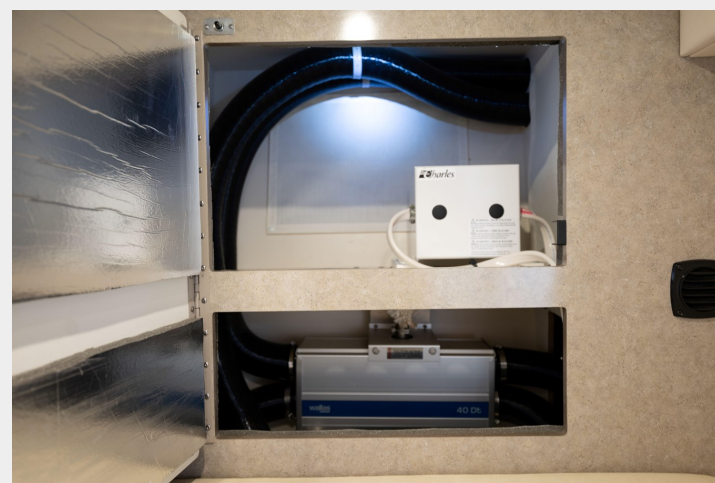
**Engine Type:** Inboard

**Fuel Type:** Gas

# PHOTOS

















# CONTACTS

---

Andrey Shestakov, leading yacht broker of the sales department of Shestakov Yacht Sales Inc. Shestakov Yacht Sales Inc., the official representative of the Miami/Fort Lauderdale FL headquarters.

## Contact details

---

Email: [andrey@shestakovyachtsales.com](mailto:andrey@shestakovyachtsales.com)

Web: [shestakovyachtsales.com/en/](http://shestakovyachtsales.com/en/)

## Telephones

---

USA: +1(954)274-4435

## Office hours

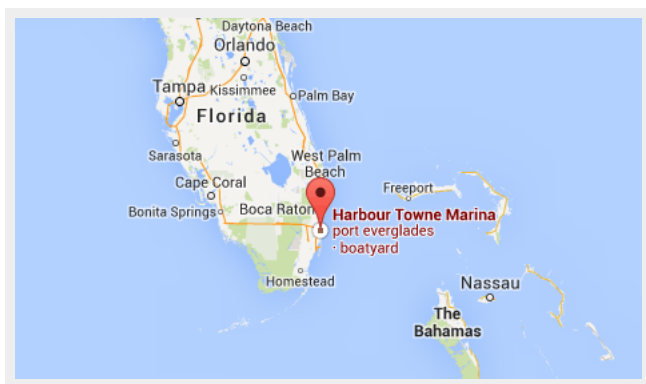
---

Monday – Saturday: **9:00 - 21:00** EDT

Sunday: **closed**

## Address

---



Harbour Towne Marina, 850 NE 3rd St, STE 213,  
Dania, FL 33004