



SHESTAKOV
Yacht Sales

BENETEAU TSWIFT TRAWLER 52 — BENETEAU

Builder: [Beneteau](#)

Year Built: 2011

Model: N/A

Price: €590,000 EUR

Location: Turkey

Max Speed: 23 Knots (26.47 MPH)

LOA: 55' 0" (17 mm)

Beam: 16' 0" (4.92 mm)

Min Draft: 3' 11" (1.2 mm)

Max Draft: 3' 11" (1.2 mm)

Cruising Speed: 18 Knots (20.71 MPH)

Our experienced yacht broker, Andrey Shestakov, will help you choose and buy a yacht that best suits your needs. BENETEAU TSWIFT TRAWLER 52 — Beneteau from our catalogue. Presently, at Shestakov Yacht Sales Inc., we have a wide variety of yachts available on our sale's list. We also work in close contact with all the big yacht manufacturers from all over the world.

If you would like to buy a yacht BENETEAU TSWIFT TRAWLER 52 — Beneteau or would like help answering any questions concerning purchasing, selling or chartering a yacht, please call +1(954)274-4435

TABLE OF CONTENTS

TABLE OF CONTENTS	2
SPECIFICATIONS	3
Basic Information	3
Dimensions	3
Speed, Capacities and Weight	4
Accommodations	4
Hull and Deck Information	4
Engine Information	4
PHOTOS	5
CONTACTS	12
Contact details	12
Telephones	12
Office hours	12
Address	12

SPECIFICATIONS

Overview

****Discover the Elegance of the 2011 Luxury Yacht in Turkey****

Step aboard this stunning 55-foot luxury yacht, a true masterpiece of nautical design and engineering, now available for sale in the picturesque waters of Turkey. Crafted in 2011, this exquisite vessel combines performance with unparalleled comfort, making it the perfect choice for those looking to buy a yacht that embodies both style and functionality.

As you glide through the azure waves at a cruising speed of 18 knots, the powerful twin Volvo Penta inboard engines ensure a smooth and exhilarating ride, with a maximum speed of 23 knots for those who crave adventure. The yacht's sleek fiberglass hull, designed by the renowned Joubert Michel, not only enhances its aesthetic appeal but also provides exceptional stability and maneuverability, making it ideal for both seasoned sailors and newcomers alike.

The spacious beam of 16 feet allows for generous living areas, where luxury meets practicality. The meticulously designed deck, also crafted from fiberglass, invites you to bask in the sun or entertain guests in style. With a water capacity of over 211 gallons and a fuel capacity of 528 gallons, this yacht is equipped for extended voyages, ensuring you can explore the stunning coastlines and hidden coves of Turkey without a care in the world.

Inside, the yacht boasts a thoughtfully designed layout that maximizes comfort and elegance. The interior spaces are bathed in natural light, creating an inviting atmosphere perfect for relaxation or entertaining. Whether you're hosting a lavish dinner party or enjoying a quiet evening under the stars, this yacht provides the perfect backdrop for unforgettable memories.

Currently located in Turkey, this yacht for sale is a rare find in the competitive yacht sales market. With its combination of luxury, performance, and timeless design, it stands out as a premier choice for discerning buyers. Don't miss the opportunity to own this exceptional vessel and experience the ultimate in maritime luxury.

Embark on your next adventure and make this stunning yacht your own. Explore the possibilities of yacht sales in the current boat location and take the first step towards a life of elegance on the

Basic Information

Category: Motor yachts

Sub category: Trawler

Model Year: 2011

Year Built: 2011

Country: Turkey

Dimensions

LOA: 55' 0" (17 mm)

Beam: 16

Min Draft: 3' 11" (1.2 mm)

Max Draft: 3' 11" (3.937 mm)

Speed, Capacities and Weight

Cruise Speed: 18 Knots (20.71 MPH)

Cruise Speed Range: 0 Kts.

Max Speed: 23 Knots (26.47 MPH)

Max Speed Range: 0 Kts.

Gross Tonnage: 31.22 Pounds

Water Capacity: 211.34 Gallons.

Holding Tank: 0 Gallons

Fuel Capacity: 528.34 Gallons

Accommodations

Total Cabins: 0

Total Berths: 0

Sleeps: 0

Total Heads: 0

Crew Cabin: 0

Crew Berths: 0

Crew Heads: 0

Hull and Deck Information

Hull Material: Fiberglass and Plastic Yachts

Deck Material: Fiberglass

Hull Configuration: N/A

Hull Designer: JOUBERT MICHEL

Interior Designer: N/A

Engine Information

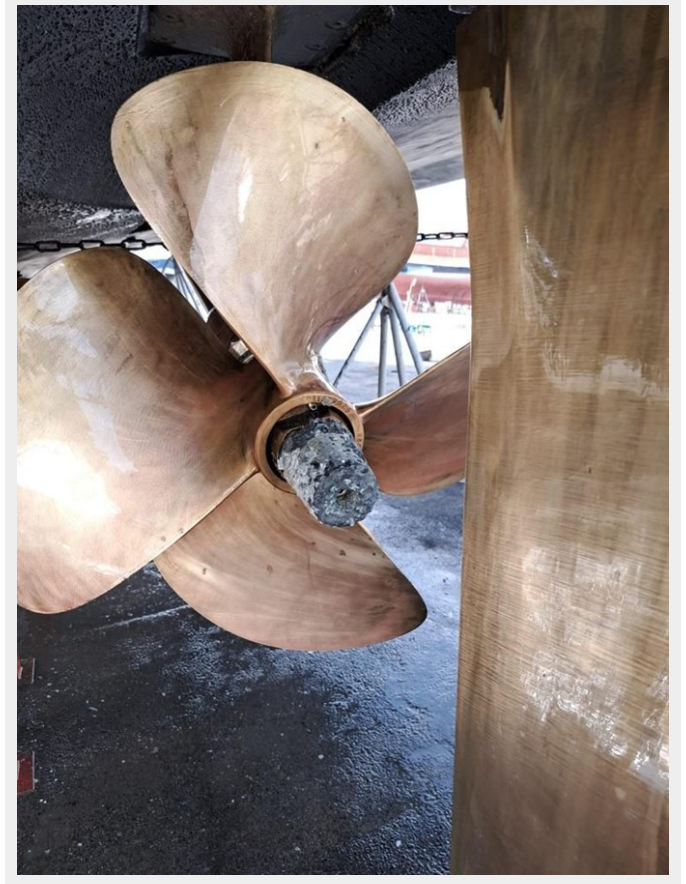
Engines: 2

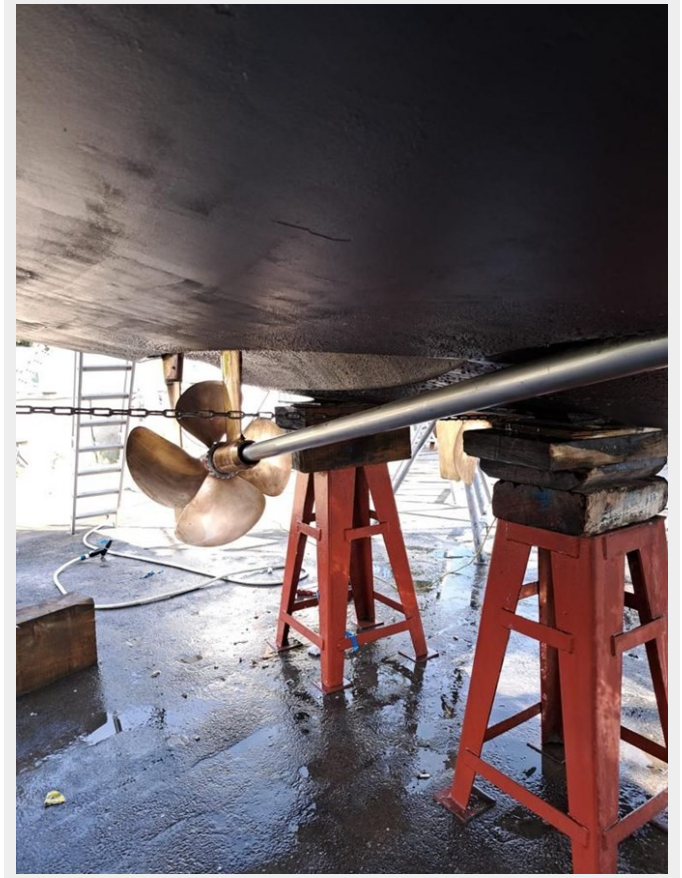
Manufacturer: Volvo Penta

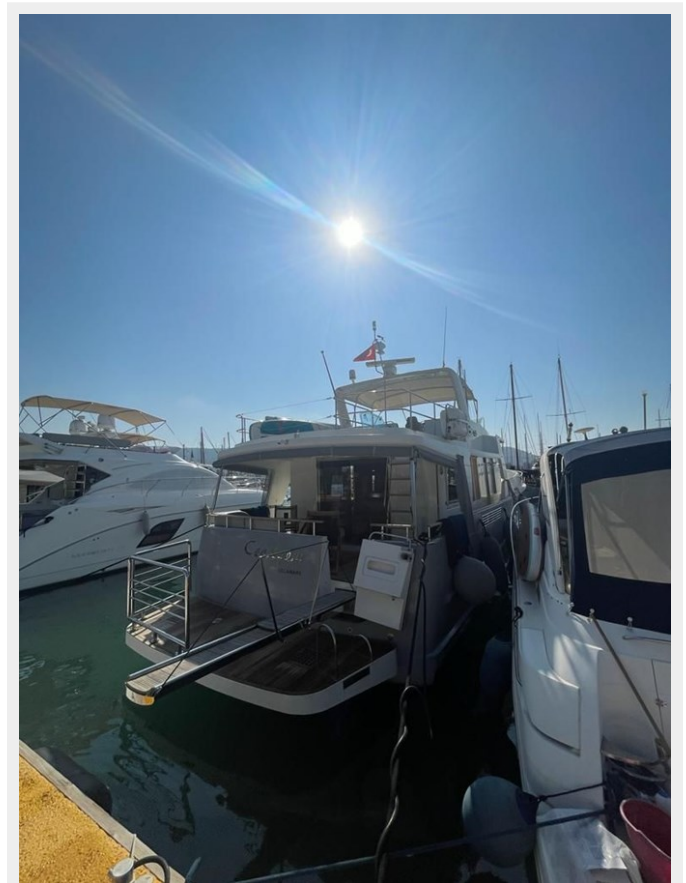
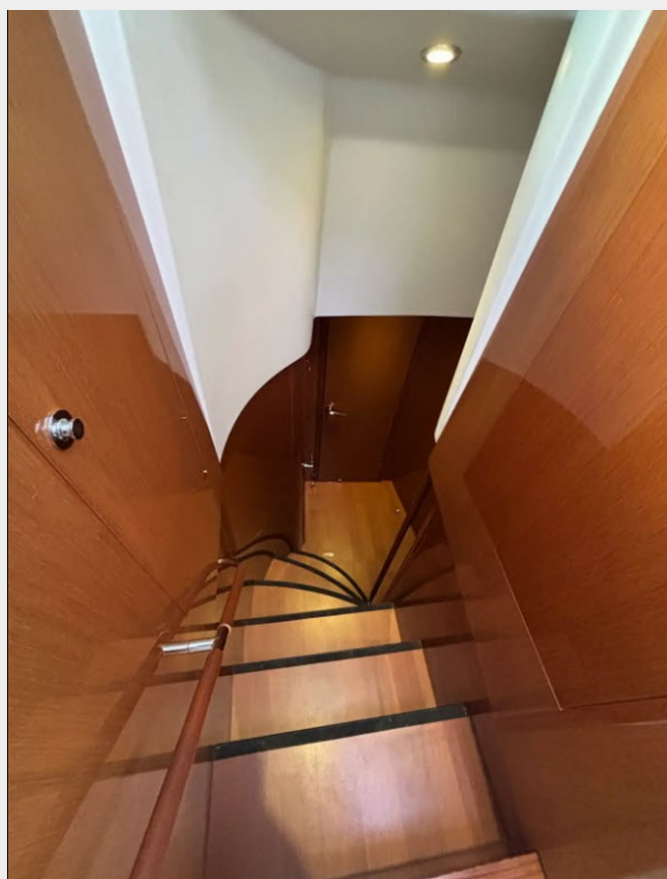
Engine Type: Inboard

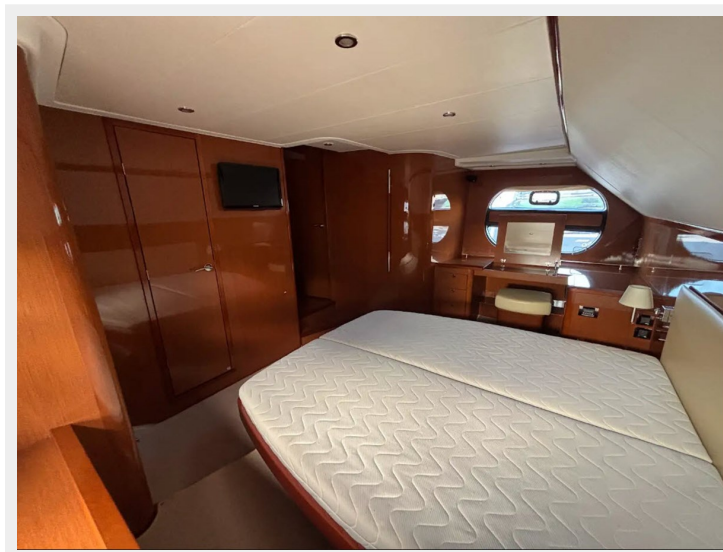
Fuel Type: Diesel

PHOTOS















CONTACTS

Andrey Shestakov, leading yacht broker of the sales department of Shestakov Yacht Sales Inc. Shestakov Yacht Sales Inc., the official representative of the Miami/Fort Lauderdale FL headquarters.

Contact details

Email: andrey@shestakovyachtsales.com

Web: shestakovyachtsales.com/en/

Telephones

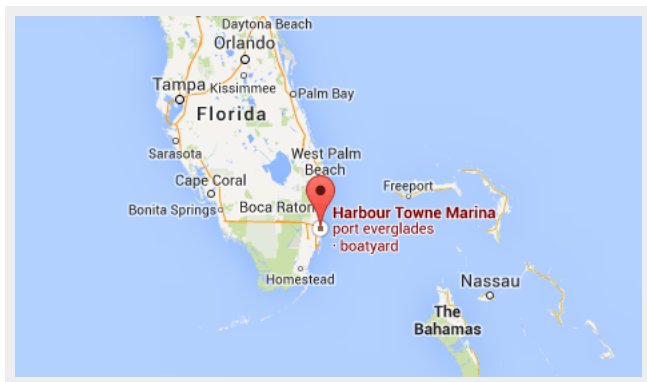
USA: +1(954)274-4435

Office hours

Monday – Saturday: **9:00 - 21:00** EDT

Sunday: **closed**

Address



Harbour Towne Marina, 850 NE 3rd St, STE 213,
Dania, FL 33004