

CAT - CATALINA YACHTS



Builder:

[Catalina Yachts](#)

Year Built:

2000

Model:

N/A

Price:

[See on website](#)

Location:

Las Palmas de Gran Canaria, Spain

Max Speed:

9 Knots (10.36 MPH)

LOA:

42' 0" (12.8 mm)

Beam:

13' 0" (4.14 mm)

Min Draft:

16' 5" (5 mm)

Max Draft:

32' 10" (10 mm)

Cruising Speed:

7 Knots (8.06 MPH)

TABLE OF CONTENTS

| | |
|------------------------------------|-----------|
| Overview | 4 |
| Specifications | 5 |
| Basic Information | 5 |
| Dimensions | 5 |
| Speed, Capacities and Weight | 5 |
| Accommodations | 6 |
| Hull and Deck Information | 6 |
| Gallery | 7 |
| Contacts | 16 |

OVERVIEW

Superb Catalina 420 MKII, impeccably maintained and poised for adventure on the open seas. The owner is upgrading to a different vessel, presenting a fantastic opportunity for yacht sales in the current boat location. This yacht for sale features two sets of sails, ensuring versatility for any sailing enthusiast. The main cabin boasts an impressive headroom of 2.03m, while the forward cabin offers a comfortable 1.93m.

Accommodations include two spacious cabins. The forward cabin is exceptionally roomy, complete with a generous mattress, ample lighting, stylish furnishings, storage drawers, and a private restroom. The second cabin is equally impressive, featuring high ceilings and its own private toilet.

Galley Equipment

Equipped with a fresh water cooler, a D.C. powered system, a built-in microwave oven, a double stainless steel sink, and a three-burner stove with an oven. The L.P.G. plumbing system includes pressure water distribution with a filter at the pump, along with two marine heads.

Electronics & Navigation

This yacht is outfitted with a Raytheon ST 60 speed and depth system mounted on a four-instrument Navpod with a 1" angle guard, complemented by a Navico Axis RT 1400 for enhanced navigation.

Electrical System

Featuring three heavy-duty 12-volt marine batteries, a multi-bank automatic battery charger, international running lights, and 115V 30amp shore power. The custom electric panel includes both AC and DC circuit breakers, along with ground fault circuit protection.

Sales & Rigging

The sail area measures 797 sq ft, with the mainsail rated at 362 sq ft and the

100% triangle rated at 435 sq ft. The rigging includes double spreaders swept aft, with a single intermediate and lower shroud, as well as a fore-stay, back-stay, and lowers made from 3/8" diameter 7x19 low-stretch rope. Halyards lead aft with a spring-loaded solid boom vang for ease of handling.

Additional Features

Primary winches are Lewmar 52 chrome bronze self-tailing, complemented by Lewmar 40 chrome bronze halyard winches. The yacht also includes a 4.54 kg LPG tank.

This Catalina 420 MKII is currently located in the stunning Canary Islands, Spain, specifically Lanzarote, making it an ideal choice for those looking to buy a yacht in a picturesque setting. Don't miss this opportunity to own a luxurious vessel ready for your next sailing adventure!

SPECIFICATIONS

Basic Information

Category:

Sail yachts

Sub category:

Cruising Sailboats for Sale

Model Year:

2000

Year Built:

2000

Country:

Spain

Dimensions

LOA:

42' 0" (12.8 mm)

Min Draft:

16' 5" (5 mm)

Beam:

13

Max Draft:

32' 10" (32.808 mm)

Speed, Capacities and Weight

Cruise Speed:

7 Knots (8.06 MPH)

Cruise Speed Range:

0 Kts.

Max Speed:

9 Knots (10.36 MPH)

Max Speed Range:

0 Kts.

Gross Tonnage:

21 Pounds

Water Capacity:

111 Gallons.

Holding Tank:

0 Gallons

Fuel Capacity:

39 Gallons

Accommodations

Total Cabins:

—

Total Berths:

—

Sleeps:

6

Total Heads:

2

Crew Cabin:

0

Crew Berths:

0

Crew Heads:

—

Hull and Deck Information

Hull Material:

Fiberglass and Plastic Yachts

Deck Material:

GRP

Hull Configuration:

Monohull

Hull Designer:

Gerry Douglas

Interior Designer:

Catalina Yachts Design

Engine Information

Engines:

1

Manufacturer:

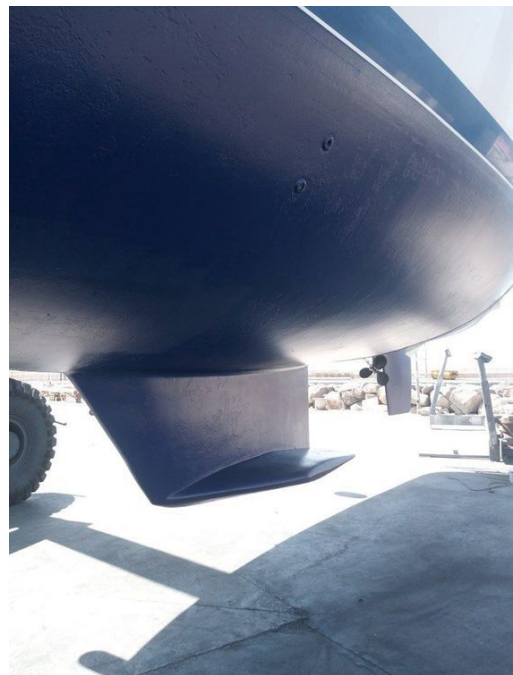
Yanmar

Engine Type:

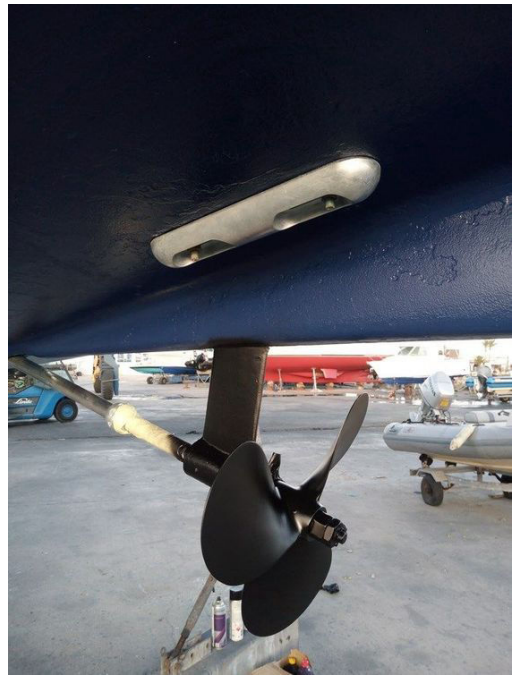
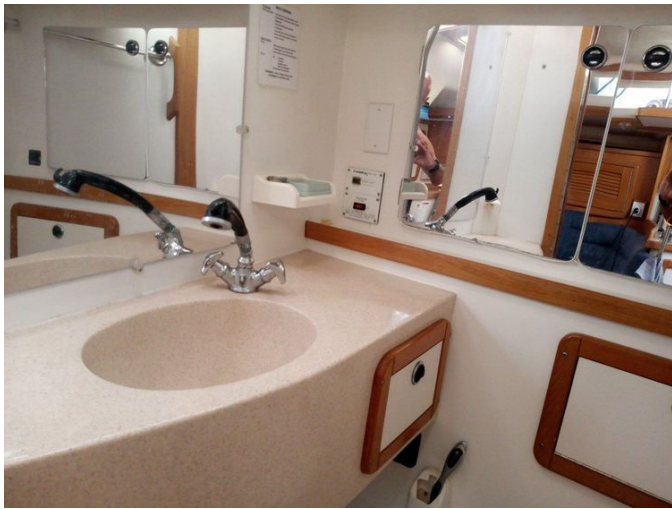
Fuel Type:

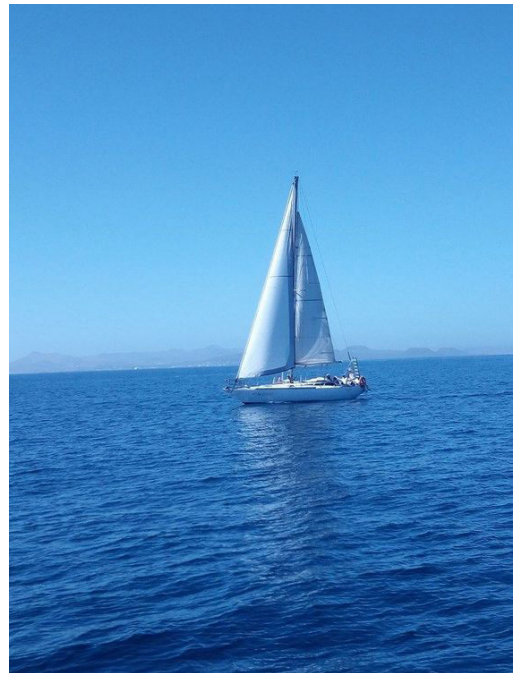
Diesel

GALLERY



















CONTACTS

Shestakov Yacht Sales is a brokerage company specializing in the sale and service of yachts worldwide. The company offers services for buying and selling both new and used motor yachts, sailing vessels, and luxury superyachts. They also provide yacht registration, insurance, technical maintenance, crew selection, and charter organization services across the U.S., Canada, Latin America, the Caribbean, and the Bahamas.

The founder and lead broker of the company is Andrey Shestakov, a licensed and certified expert with extensive experience in marine engineering and shipbuilding.

The company has an extensive network of partnerships with major yacht manufacturers worldwide and provides services in multiple languages, including Russian, Ukrainian, Spanish, and English. The office is in Dania Beach, Florida, USA.

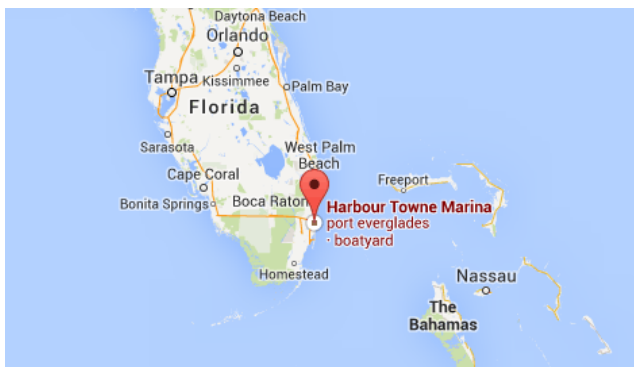
For more information and to view available yachts, you can visit the company's official website: <https://shestakovyachtsales.com>

Contact details

Phone: +1(954)274-4435

Email: andrey@shestakovyachtsales.com

Address



Harbour Towne Marina, 850 NE 3rd St,
STE 213,
Dania, FL 33004