



SHESTAKOV
Yacht Sales

ELTON — WINDSHIP YACHTS



Builder: [WINDSHIP YACHTS](#)

Year Built: 1992

Model: Elton

Price: €1,250,000 EUR

Location: France

Max Speed: 14 Knots (16.11 MPH)

LOA: 104' 0" (31.7 mm)

Beam: 23' 0" (7.2 mm)

Min Draft: 0' 0" (0 mm)

Max Draft: 11' 6" (3.5 mm)

Cruising Speed: 9 Knots (10.36 MPH)

Our experienced yacht broker, Andrey Shestakov, will help you choose and buy a yacht that best suits your needs **ELTON — WINDSHIP YACHTS** from our catalogue. Presently, at Shestakov Yacht Sales Inc., we have a wide variety of yachts available on our sale's list. We also work in close contact with all the big yacht manufacturers from all over the world.

If you would like to buy a yacht **ELTON — WINDSHIP YACHTS** or would like help answering any questions concerning purchasing, selling or chartering a yacht, please call **+1(954)274-4435**

TABLE OF CONTENTS

TABLE OF CONTENTS	2
SPECIFICATIONS	3
Basic Information	3
Dimensions	3
Speed, Capacities and Weight	4
Accommodations	4
Hull and Deck Information	4
Engine Information	4
PHOTOS	5
CONTACTS	9
Contact details	9
Telephones	9
Office hours	9
Address	9

SPECIFICATIONS

Overview

Built by Windship Trident in 1992, S/Y Elton (formerly known as Lunar Mist and Cinderella II) has undergone a comprehensive service in 2023, along with an interior overhaul and new rigging in 2021. Spanning 31.7 meters, this yacht for sale presents an inviting and sophisticated option for those looking to indulge in a luxurious sailing experience.

The 2023 service addressed all major technical elements, including the engine, generators, and bow thrusters, while the significant refit in 2021 transformed her into a refined and spacious vessel. During this upgrade, the mast was completely restored, and the interior was enhanced with new upholstery, fresh panelling, exquisite artwork, and elegant linens, resulting in a modern and stylish ambiance. The yacht's striking exterior design and engineering are attributed to Tripp Design, while the timeless interior reflects the artistry of acclaimed superyacht designer Donald Starkey.

Accommodating up to eight guests overnight, S/Y Elton also provides the services of up to three crew members, ensuring an exceptionally comfortable and opulent experience throughout every charter.

In terms of performance, she boasts a top speed of 14 knots and a cruising speed of 9 knots, delivering a smooth sailing experience powered by a diesel Lugger engine with 15,000 hours of operation to date.

The aft deck is an idyllic space for relaxation under the sun, complete with an optional Bimini for shade when desired. C-shaped sofas flank a large table, perfect for alfresco dining and evening cocktails. The stern descends to a swim platform, featuring a ladder for effortless access to the inviting waters.

All cabins are en-suite, equipped with double beds, ample wardrobe space, and skylights that flood the rooms with natural light. The Master suite includes a luxurious bathtub and shower, along with a vanity and head, while the other en-suite bathrooms are fitted with a vanity, head, and shower.

Experience the ultimate in sailing luxury and comfort with this exquisite yacht, available for yacht sales in the current boat location. Whether you wish to buy a yacht or simply enjoy a charter, S/Y Elton promises an unforgettable journey on the water.

Basic Information

Category: Sail yachts

Model Year: 1992

Sub category:

Year Built: 1992

Country: France

Dimensions

LOA: 104' 0" (31.7 mm)

Beam: 23

Min Draft: 0' 0" (0 mm)

Max Draft: 11' 6" (11.483 mm)

Speed, Capacities and Weight

Cruise Speed: 9 Knots (10.36 MPH)

Cruise Speed Range: 0 Kts.

Max Speed: 14 Knots (16.11 MPH)

Max Speed Range: 0 Kts.

Gross Tonnage: 98 Pounds

Water Capacity: 999.89 Gallons.

Holding Tank: 0 Gallons

Fuel Capacity: 1921.59 Gallons

Accommodations

Total Cabins: 0

Total Berths: 0

Sleeps: 0

Total Heads: 0

Crew Cabin: 0

Crew Berths: 0

Crew Heads: 0

Hull and Deck Information

Hull Material: Fiberglass and Plastic Yachts

Deck Material: GRP

Hull Configuration: N/A

Hull Designer: N/A

Interior Designer: Donald Starkey

Engine Information

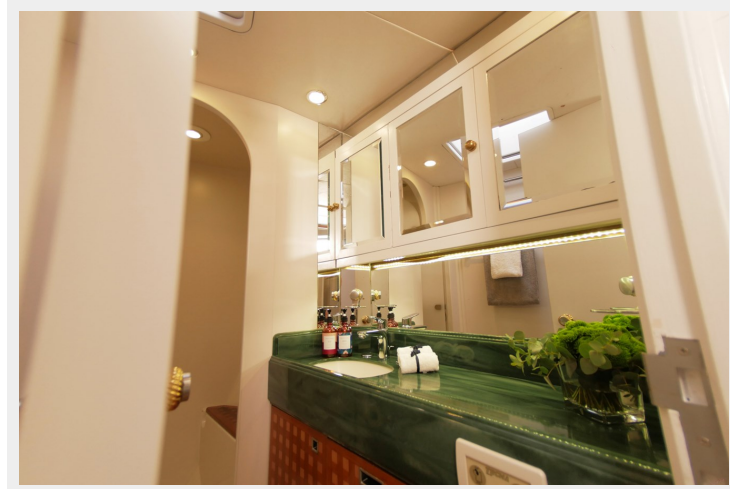
Engines: 1

Manufacturer: Luger

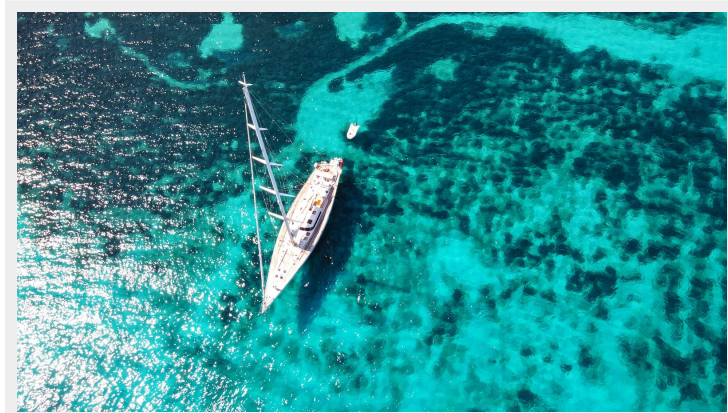
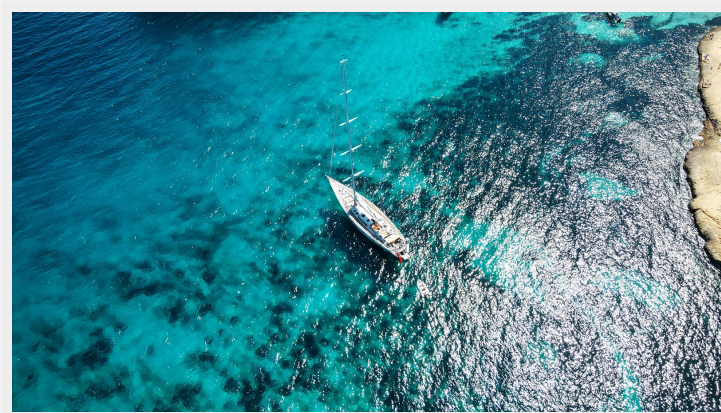
Engine Type:

Fuel Type:

PHOTOS









CONTACTS

Andrey Shestakov, leading yacht broker of the sales department of Shestakov Yacht Sales Inc. Shestakov Yacht Sales Inc., the official representative of the Miami/Fort Lauderdale FL headquarters.

Contact details

Email: andrey@shestakovyachtsales.com

Web: shestakovyachtsales.com/en/

Telephones

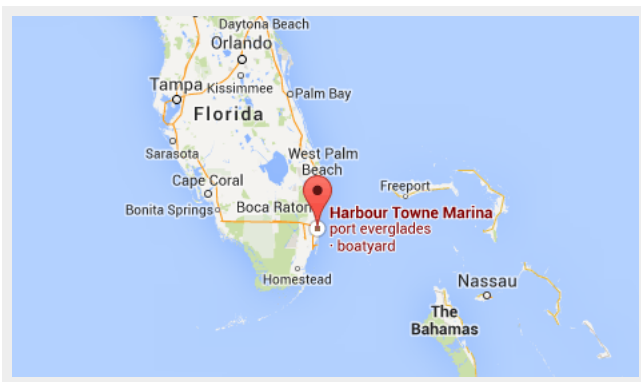
USA: +1(954)274-4435

Office hours

Monday – Saturday: **9:00 - 21:00** EDT

Sunday: **closed**

Address



Harbour Towne Marina, 850 NE 3rd St, STE 213,
Dania, FL 33004