



JOHNSON 83' FLYBRIDGE wHYDRAULIC PLATFORM — JOHNSON

Builder: JOHNSON

Year Built: 2025

Model: Flybridge Motor Yacht

Price: \$6,250,000 USD

Location: Taiwan

Max Speed: 25 Knots (28.77 MPH)

LOA: 83' 0" (25.3 mm)

Beam: 20' 0" (6.32 mm)

Min Draft: 19' 8" (6 mm)

Max Draft: 19' 11" (6.0833 mm)

Cruising Speed: 21 Knots (24.17 MPH)

Our experienced yacht broker, Andrey Shestakov, will help you choose and buy a yacht that best suits your needs JOHNSON 83' FLYBRIDGE wHYDRAULIC PLATFORM — JOHNSON from our catalogue. Presently, at Shestakov Yacht Sales Inc., we have a wide variety of yachts available on our sale's list. We also work in close contact with all the big yacht manufacturers from all over the world.

If you would like to buy a yacht JOHNSON 83' FLYBRIDGE wHYDRAULIC PLATFORM — JOHNSON or would like help answering any questions concerning purchasing a yacht, please contact us at [+1 212 774 4435](tel:+12127744435).

TABLE OF CONTENTS

TABLE OF CONTENTS	2
SPECIFICATIONS	3
Basic Information	3
Dimensions	3
Speed, Capacities and Weight	4
Accommodations	4
Hull and Deck Information	4
Engine Information	4
PHOTOS	5
CONTACTS	10
Contact details	10
Telephones	10
Office hours	10
Address	10

SPECIFICATIONS

Overview

****Introducing the Exquisite 2025 Luxury Yacht: A Masterpiece of Elegance and Performance****

Nestled in the stunning waters of Taiwan, this 83-foot marvel is a testament to the art of yacht design and craftsmanship. Built in 2025, this semi-displacement beauty combines cutting-edge technology with timeless elegance, making it a standout choice for discerning buyers in the yacht sales market. With a beam of 20 feet and a draft that ranges from 19.685 to 19.958 feet, this yacht offers stability and comfort, ensuring smooth sailing whether you're cruising at a leisurely 21 knots or reaching exhilarating speeds of up to 25 knots.

Step aboard and be captivated by the luxurious teak interiors, meticulously designed by the renowned Johnson Yachts. The spacious layout features five well-appointed heads and a dedicated crew cabin, accommodating up to two crew members, ensuring that your every need is catered to while you enjoy the open seas. The yacht's generous water capacity of 350 gallons and fuel capacity of 1600 gallons means you can embark on extended voyages without a worry, exploring hidden coves and vibrant coastal towns.

The heart of this yacht lies in its powerful twin MAN inboard engines, designed for diesel efficiency and performance. Whether you're navigating the tranquil waters or slicing through waves, the engineering excellence guarantees a thrilling yet comfortable ride. The hull, crafted from premium teak, not only enhances the yacht's aesthetic appeal but also ensures durability and resilience against the elements.

As you explore the current boat location, you'll find this yacht for sale is not just a vessel; it's an invitation to a lifestyle of luxury and adventure. Imagine hosting elegant soirées under the stars or enjoying serene mornings on the deck, surrounded by the beauty of nature. This yacht is perfect for those looking to buy a yacht that embodies sophistication and performance, making it a prime candidate in the competitive yacht sales in the current boat location.

Don't miss the opportunity to own this exquisite 2025 luxury yacht. With its perfect blend of style, comfort, and performance, it's more than just a yacht; it's your gateway to unforgettable experiences on the water. Embrace the allure of the sea and make this stunning vessel your own

Basic Information

Category: Motor yachts
Model Year: 2025

Sub category:
Year Built: 2025

Country: Taiwan

Dimensions

LOA: 83' 0" (25.3 mm)

Beam: 20

Min Draft: 19' 8" (6 mm)

Max Draft: 19' 11" (19.958 mm)

Speed, Capacities and Weight

Cruise Speed: 21 Knots (24.17 MPH)

Cruise Speed Range: 0 Kts.

Max Speed: 25 Knots (28.77 MPH)

Max Speed Range: 0 Kts.

Gross Tonnage: 63 Pounds

Water Capacity: 350 Gallons.

Holding Tank: 0 Gallons

Fuel Capacity: 1600 Gallons

Accommodations

Total Cabins: 0

Total Berths: 0

Sleeps: 0

Total Heads: 5

Crew Cabin: 1

Crew Berths: 2

Crew Heads: 0

Hull and Deck Information

Hull Material: Teak

Deck Material: Teak

Hull Configuration: Semi-Displacement

Hull Designer: Dixon Yacht Design

Interior Designer: Johnson Yachts

Engine Information

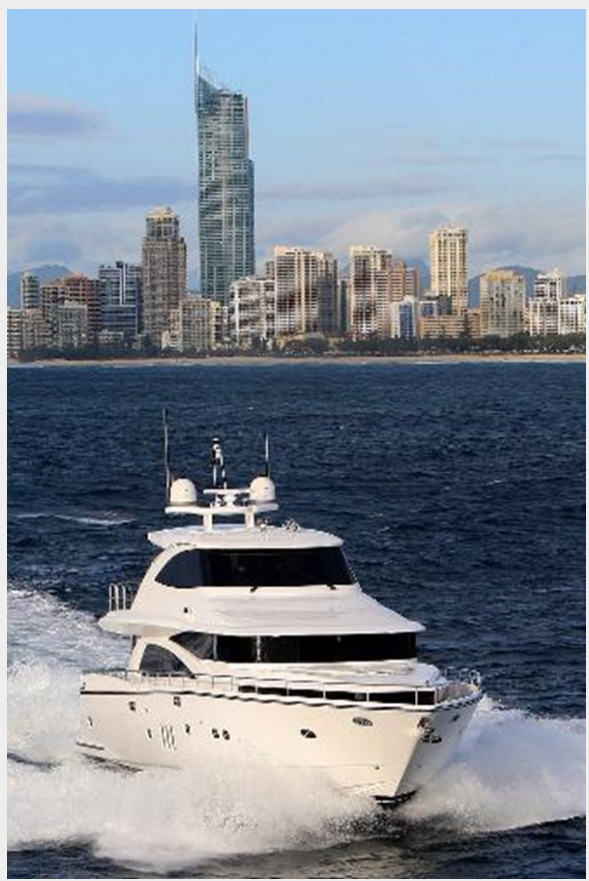
Engines: 2

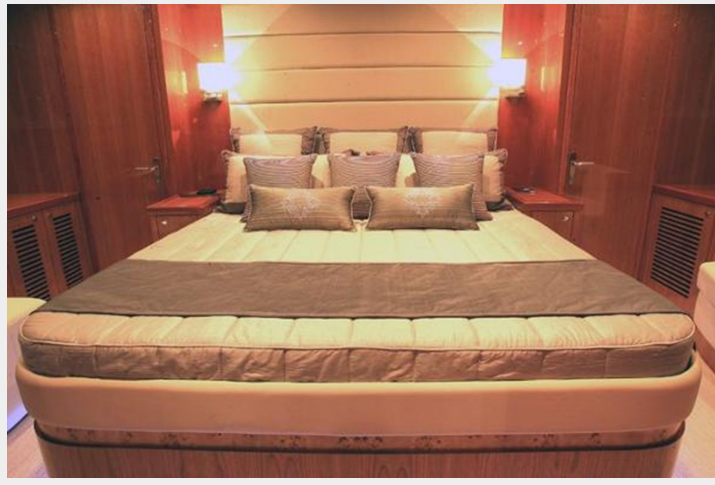
Manufacturer: MAN

Engine Type: Inboard

Fuel Type: Diesel

PHOTOS











CONTACTS

Andrey Shestakov, leading yacht broker of the sales department of Shestakov Yacht Sales Inc. Shestakov Yacht Sales Inc., the official representative of the Miami/Fort Lauderdale FL headquarters.

Contact details

Email: andrey@shestakovyachtsales.com

Web: shestakovyachtsales.com/en/

Telephones

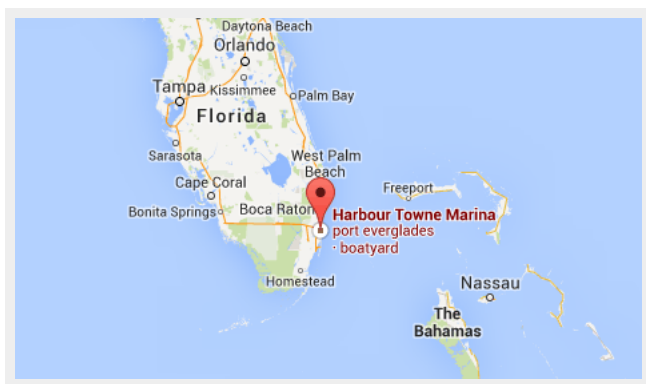
USA: +1(954)274-4435

Office hours

Monday – Saturday: **9:00 - 21:00** EDT

Sunday: **closed**

Address



Harbour Towne Marina, 850 NE 3rd St, STE 213,
Dania, FL 33004