

OMEGA — CUSTOM BUILT



Builder: CUSTOM BUILT

Year Built: 1991

Model: Bass Harbor Boat Co. Cruiser

Price: \$79,900.00 USD

Location: United States

Max Speed: 17 Knots (19.56 MPH)

LOA: 42' 0" (12.8 mm)

Beam: 13' 0" (4.17 mm)

Min Draft: 0' 0" (0 mm)

Max Draft: 14' 9" (4.5 mm)

Cruising Speed: 12 Knots (13.81 MPH)

Our experienced yacht broker, Andrey Shestakov, will help you choose and buy a yacht that best suits your needs *Omega — CUSTOM BUILT* from our catalogue. Presently, at Shestakov Yacht Sales Inc., we have a wide variety of yachts available on our sale's list. We also work in close contact with all the big yacht manufacturers from all over the world.

If you would like to buy a yacht *Omega — CUSTOM BUILT* or would like help answering any questions concerning purchasing, selling or chartering a yacht, please call **+1(954)274-4435**

TABLE OF CONTENTS

TABLE OF CONTENTS	2
SPECIFICATIONS	3
Basic Information	3
Dimensions	3
Speed, Capacities and Weight	4
Accommodations	4
Hull and Deck Information	4
Engine Information	4
PHOTOS	5
CONTACTS	11
Contact details	11
Telephones	11
Office hours	11
Address	11

SPECIFICATIONS

Overview

Crafted by the esteemed Robert C. Rich at the Bass Harbor Boat Company in 1991, Omega is a classic Maine powerboat that exemplifies traditional craftsmanship. This seaworthy beauty accommodates up to six guests, featuring a fully equipped galley and a private head. The enclosed wheelhouse provides panoramic views and is bathed in natural light, thanks to its surround-opening windows, making it perfect for enjoying the scenery while sheltered from the elements. A comfortable settee doubles as a single berth for added convenience. The spacious aft cockpit invites you to relax and soak in the fresh air, whether you're fishing, swimming, or entertaining at the dock. If you're exploring yacht sales in the current boat location and seeking a reliable vessel that glides gracefully through the water, Omega is a must-see for anyone looking to buy a yacht!

Basic Information

Category:
Model Year: 1991

Sub category:
Year Built: 1991

Country: United States

Dimensions

LOA: 42' 0" (12.8 mm)

Beam: 13

Min Draft: 0' 0" (0 mm)

Max Draft: 14' 9" (14.764 mm)

Speed, Capacities and Weight

Cruise Speed: 12 Knots (13.81 MPH)

Cruise Speed Range: 0 Kts.

Max Speed: 17 Knots (19.56 MPH)

Max Speed Range: 0 Kts.

Gross Tonnage: 0 Pounds

Water Capacity: 80 Gallons.

Holding Tank: 0 Gallons

Fuel Capacity: 250 Gallons

Accommodations

Total Cabins: 0

Total Berths: 0

Sleeps: 0

Total Heads: 1

Crew Cabin: 0

Crew Berths: 0

Crew Heads: 0

Hull and Deck Information

Hull Material: Wooden Yachts

Deck Material: Wood

Hull Configuration: N/A

Hull Designer: N/A

Interior Designer: N/A

Engine Information

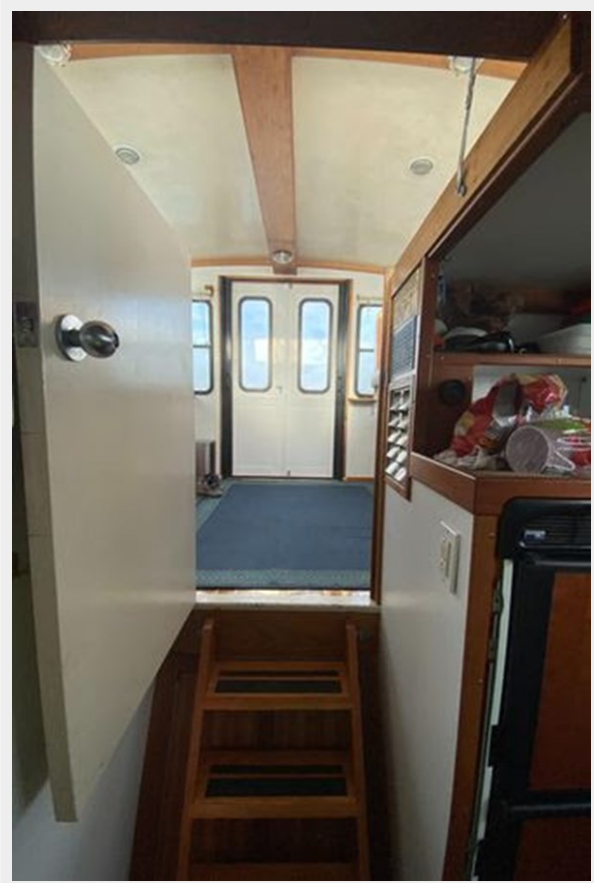
Engines: 1

Manufacturer: Caterpillar

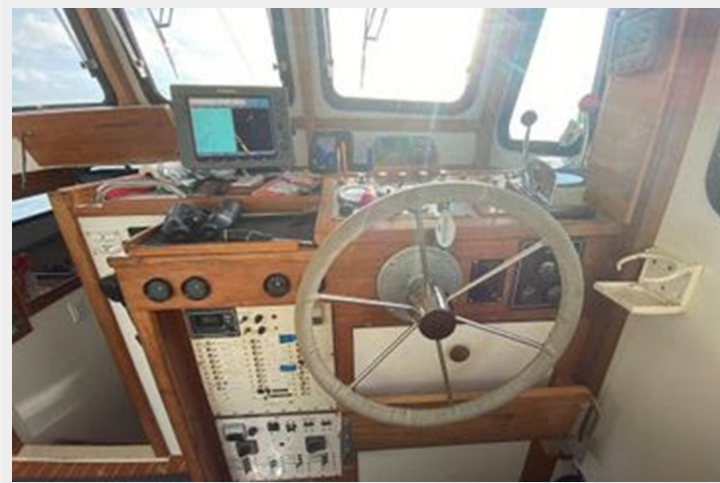
Engine Type: Inboard

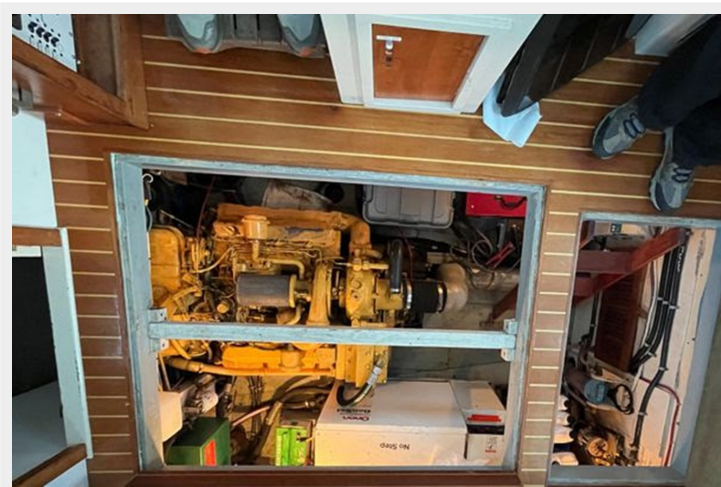
Fuel Type: Diesel

PHOTOS













CONTACTS

Andrey Shestakov, leading yacht broker of the sales department of Shestakov Yacht Sales Inc. Shestakov Yacht Sales Inc., the official representative of the Miami/Fort Lauderdale FL headquarters.

Contact details

Email: andrey@shestakovyachtsales.com

Web: shestakovyachtsales.com/en/

Telephones

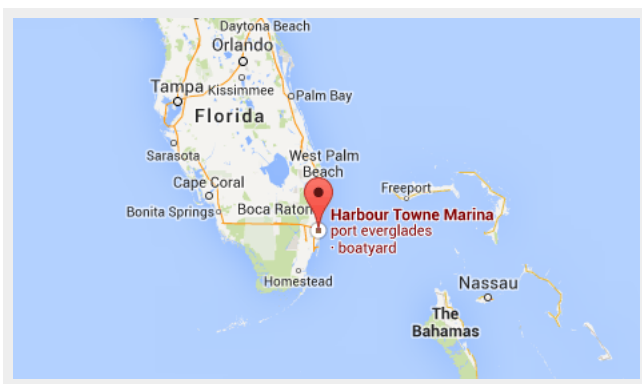
USA: +1(954)274-4435

Office hours

Monday – Saturday: **9:00 - 21:00** EDT

Sunday: **closed**

Address



Harbour Towne Marina, 850 NE 3rd St, STE 213,
Dania, FL 33004