



SHESTAKOV
Yacht Sales

SEA RAY 310 SUNDANCER — SEA RAY

Builder: [SEA RAY](#)

Year Built: 2007

Model: 310 Sundancer

Price: \$80,000 USD

Location: United States

Max Speed: 0 Knots (0 MPH)

LOA: 31' 0" (9.45 mm)

Beam: 9' 0" (2.9 mm)

Min Draft: 0' 0" (0 mm)

Max Draft: 10' 8" (3.25 mm)

Cruising Speed: 0 Knots (0 MPH)

Our experienced yacht broker, Andrey Shestakov, will help you choose and buy a yacht that best suits your needs [Sea Ray 310 Sundancer — SEA RAY](#) from our catalogue. Presently, at Shestakov Yacht Sales Inc., we have a wide variety of yachts available on our sale's list. We also work in close contact with all the big yacht manufacturers from all over the world.

If you would like to buy a yacht [Sea Ray 310 Sundancer — SEA RAY](#) or would like help answering any questions concerning purchasing, selling or chartering a yacht, please call **+1(954)274-4435**

TABLE OF CONTENTS

TABLE OF CONTENTS	2
SPECIFICATIONS	3
Basic Information	3
Dimensions	3
Speed, Capacities and Weight	4
Accommodations	4
Hull and Deck Information	4
Engine Information	4
PHOTOS	5
CONTACTS	14
Contact details	14
Telephones	14
Office hours	14
Address	14

SPECIFICATIONS

Overview

This stunning cruiser embodies sophistication, luxury, and elegance, serving as the ultimate accolade for a life of achievement. Premium features include cutting-edge navigation systems, a breezy cabin with expansive windows, and impressive storage capacity.

The 310 Sundancer continues to captivate with its innovative design and striking silhouette. It glides on a deep-V hull with cored sides and a robust fiberglass base. The roomy cockpit boasts wraparound lounge seating at the rear, a spacious wet bar with a grill, and a sleek foldaway transom seat that offers aft-facing seating on the swim platform. A powered engine hatch ensures effortless access to the engine compartment. Below deck, the mid-cabin quarters are an enticing mix of cherry-wood cabinetry, maple flooring, Ultraleather seating, and high-end galley appliances. Privacy curtains divide the sleeping quarters from the main salon, and a flat-screen TV is visible from any point in the cabin.

****Highlights:****

- 1000 hours of service completed with risers and ****manifolds****
- Bottom paint, propellers painted, shifts adjusted and painted
- New top installed
- Entire hull waxed

Explore yacht sales in the current boat location and seize the opportunity to buy a yacht that defines luxury and style.

Basic Information

Category: Motor yachts

Sub category: Cruisers

Model Year: 2007

Year Built: 2007

Country: United States

Dimensions

LOA: 31' 0" (9.45 mm)

Beam: 9

Min Draft: 0' 0" (0 mm)

Max Draft: 10' 8" (10.663 mm)

Speed, Capacities and Weight

Cruise Speed: 0 Knots (0 MPH)

Cruise Speed Range: 0 Kts.

Max Speed: 0 Knots (0 MPH)

Max Speed Range: 0 Kts.

Gross Tonnage: 0 Pounds

Water Capacity: 35 Gallons.

Holding Tank: 0 Gallons

Fuel Capacity: 180 Gallons

Accommodations

Total Cabins: 0

Total Berths: 0

Sleeps: 0

Total Heads: 0

Crew Cabin: 0

Crew Berths: 0

Crew Heads: 0

Hull and Deck Information

Hull Material: Fiberglass and Plastic Yachts

Deck Material: Fiberglass

Hull Configuration: N/A

Hull Designer: N/A

Interior Designer: N/A

Engine Information

Engines: 2

Manufacturer: Mercury

Engine Type: Inboard

Fuel Type: Gas/Petrol

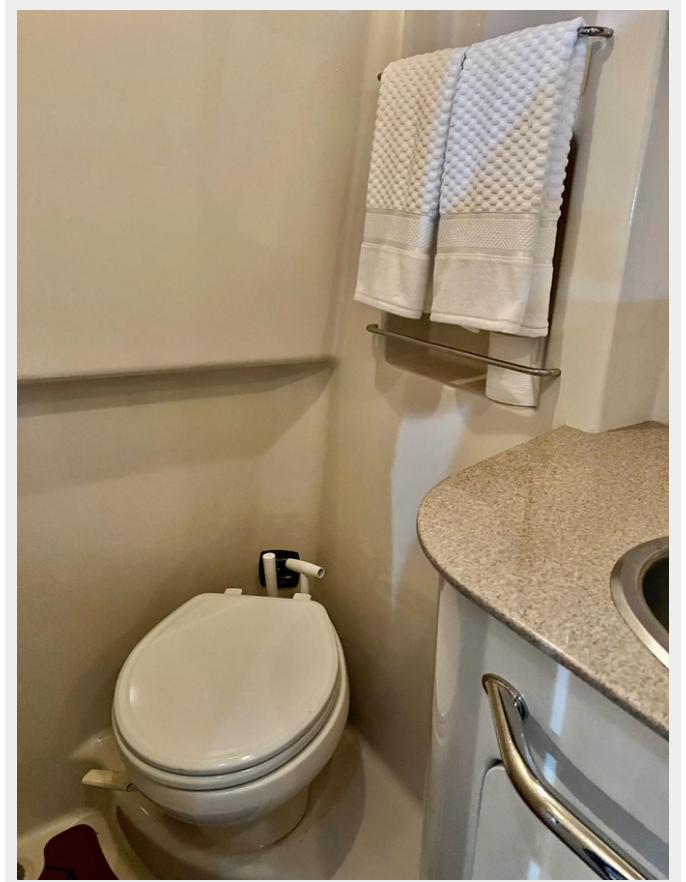
PHOTOS



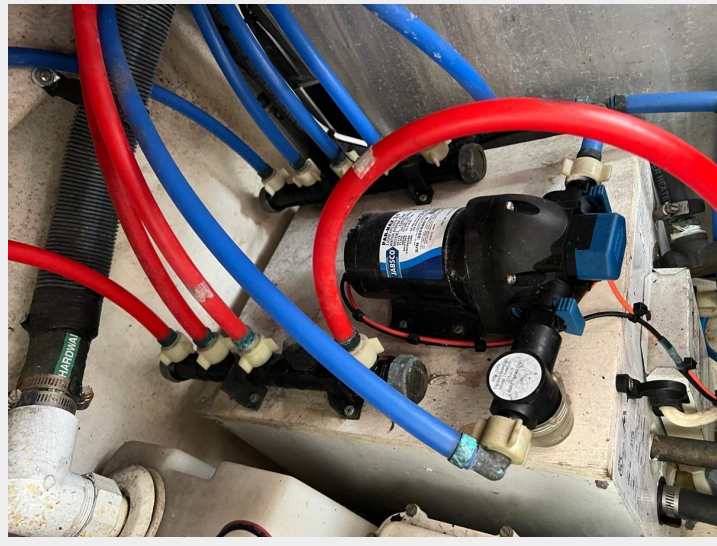
















CONTACTS

Andrey Shestakov, leading yacht broker of the sales department of Shestakov Yacht Sales Inc. Shestakov Yacht Sales Inc., the official representative of the Miami/Fort Lauderdale FL headquarters.

Contact details

Email: andrey@shestakovyachtsales.com

Web: shestakovyachtsales.com/en/

Telephones

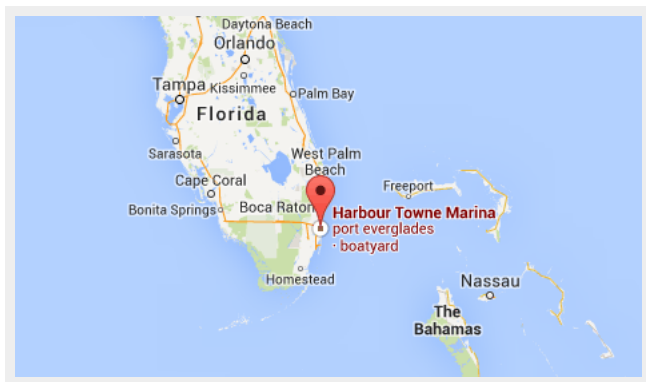
USA: +1(954)274-4435

Office hours

Monday – Saturday: **9:00 - 21:00** EDT

Sunday: **closed**

Address



Harbour Towne Marina, 850 NE 3rd St, STE 213,
Dania, FL 33004