

SWAT - WALLY



Builder:

[WALLY](#)

Year Built:

2009

Model:

Wallypower 47

Price:

[See on website](#)

Location:

Porto Cervo, Italy

Max Speed:

34 Knots (39.13 MPH)

LOA:

48' 0" (14.7 mm)

Beam:

14' 0" (4.5 mm)

Min Draft:

- (0 mm)

Max Draft:

4' 3" (1.3 mm)

Cruising Speed:

28 Knots (32.22 MPH)

TABLE OF CONTENTS

Overview 3

Specifications 4

 Basic Information 4

 Dimensions 4

 Speed, Capacities and Weight 4

 Accommodations 5

 Hull and Deck Information 5

Gallery 6

Contacts 9

OVERVIEW

If you're looking to buy a yacht that serves as the perfect day cruiser or a dynamic companion for your superyacht, this Wally 47 is an exceptional choice. Presenting the stunning 2009 Wally Wallypower 47, a masterpiece of marine craftsmanship that seamlessly combines speed with opulence, as only Wally can. This yacht for sale features a striking, ageless design with bold, angular contours and a commanding presence that hints at its impressive capabilities. With a single-owner history and meticulous care, this vessel offers exclusivity and pristine condition.

Onboard, experience a harmonious blend of comfort and practicality, with premium materials and a layout crafted for both relaxation and entertainment. The Wallypower 47 is celebrated for its superb agility and responsive steering, ensuring precise control and exhilarating journeys.

Beneath its sleek exterior, this yacht is powered by an efficient engine system, consuming around 90 liters of fuel per hour at a cruising speed of 24 knots. This makes it perfect for extended trips, boasting a range of approximately 520 nautical miles.

Always stored in a sheltered environment during the off-season, this yacht remains in immaculate condition, ready to provide unforgettable adventures on the water. The Wallypower 47 is more than a vessel; it's a symbol of elegance and a tribute to the pleasures of yachting. Ideal for the sophisticated sailor seeking a fusion of luxury and performance.

SPECIFICATIONS

Basic Information

Category:
Motor yachts

Sub category:

Model Year:
2009

Year Built:
2009

Country:
Italy

Dimensions

LOA:
48' 0" (14.7 mm)

Min Draft:
- (0 mm)

Beam:
14

Max Draft:
4' 3" (4.265 mm)

Speed, Capacities and Weight

Cruise Speed:
28 Knots (32.22 MPH)

Cruise Speed Range:
0 Kts.

Max Speed:
34 Knots (39.13 MPH)

Max Speed Range:
0 Kts.

Gross Tonnage:
19.2 Pounds

Water Capacity:
66.04 Gallons.

Holding Tank:
0 Gallons

Fuel Capacity:
528.34 Gallons

Accommodations

Total Cabins:

—

Total Berths:

—

Sleeps:

1

Total Heads:

1

Crew Cabin:

0

Crew Berths:

0

Crew Heads:

—

Hull and Deck Information

Hull Material:

Fiberglass and Plastic Yachts

Deck Material:

Fiberglass

Hull Configuration:

Deep Vee

Hull Designer:

N/A

Interior Designer:

Wally

Engine Information

Engines:

2

Manufacturer:

Volvo Penta

Engine Type:

Inboard

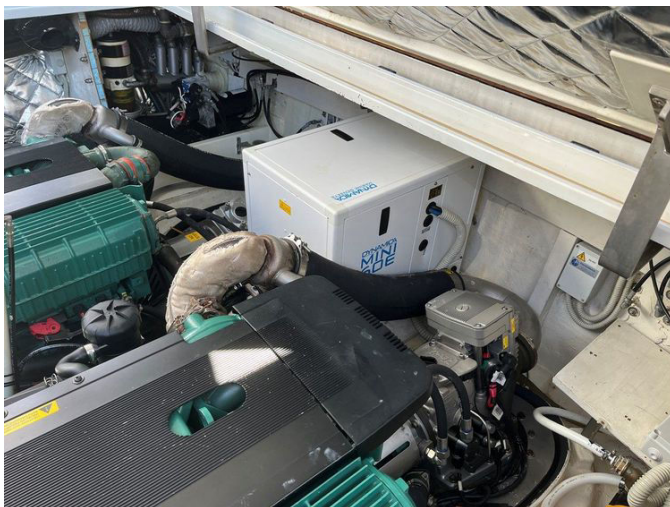
Fuel Type:

Diesel

GALLERY







CONTACTS

Shestakov Yacht Sales is a brokerage company specializing in the sale and service of yachts worldwide. The company offers services for buying and selling both new and used motor yachts, sailing vessels, and luxury superyachts. They also provide yacht registration, insurance, technical maintenance, crew selection, and charter organization services across the U.S., Canada, Latin America, the Caribbean, and the Bahamas.

The founder and lead broker of the company is Andrey Shestakov, a licensed and certified expert with extensive experience in marine engineering and shipbuilding.

The company has an extensive network of partnerships with major yacht manufacturers worldwide and provides services in multiple languages, including Russian, Ukrainian, Spanish, and English. The office is in Dania Beach, Florida, USA.

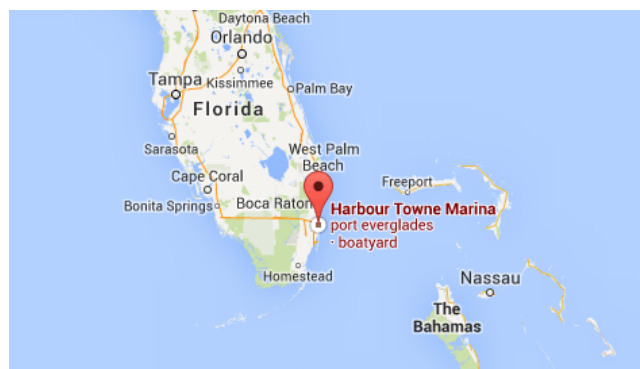
For more information and to view available yachts, you can visit the company's official website: <https://shestakovyachtsales.com>

Contact details

Phone: +1(954)274-4435

Email: andrey@shestakovyachtsales.com

Address



Harbour Towne Marina, 850 NE 3rd St,
STE 213,
Dania, FL 33004