



SHESTAKOV
Yacht Sales

WHITEBIRD — WELLCRAFT



Builder: [WELLCRAFT](#)

Year Built: 2005

Model: Wellcraft 360 Coastal

Price: \$275,000.00 USD

Location: United States

Max Speed: 38 Knots (43.73 MPH)

LOA: 40' 0" (12.29 mm)

Beam: 14' 0" (4.42 mm)

Min Draft: 9' 10" (3 mm)

Max Draft: 11' 6" (3.5 mm)

Cruising Speed: 26 Knots (29.92 MPH)

Our experienced yacht broker, Andrey Shestakov, will help you choose and buy a yacht that best suits your needs *Whitebird* — *WELLCRAFT* from our catalogue. Presently, at Shestakov Yacht Sales Inc., we have a wide variety of yachts available on our sale's list. We also work in close contact with all the big yacht manufacturers from all over the world.

If you would like to buy a yacht *Whitebird* — *WELLCRAFT* or would like help answering any questions concerning purchasing, selling or chartering a yacht, please call **+1(954)274-4435**

TABLE OF CONTENTS

| | |
|------------------------------|----|
| TABLE OF CONTENTS | 2 |
| SPECIFICATIONS | 3 |
| Basic Information | 3 |
| Dimensions | 3 |
| Speed, Capacities and Weight | 4 |
| Accommodations | 4 |
| Hull and Deck Information | 4 |
| Engine Information | 4 |
| PHOTOS | 5 |
| CONTACTS | 13 |
| Contact details | 13 |
| Telephones | 13 |
| Office hours | 13 |
| Address | 13 |

SPECIFICATIONS

Overview

A True Gem! Immaculate condition, in the water and primed for adventure! If you're in the market for a Cabo, Albemarle, Rampage, or comparable yachts, seize this chance!

Designed by Hunt Associates and powered by CUMMINS QSC 540HP Eco-Friendly and Efficient DIESELS This yacht is exceptionally maintained and comes fully equipped with Bow Thrusters, Generator, Upgraded 540 Cummins Diesels, Twin Raymarine E 120's featuring Radar, Raymarine Tridata, Auto Pilot, an additional large LCD TV in the cabin, a premium Sony Sound System, Satellite Radio, Direct TV, Underwater Lights, a Hard Top with Full Enclosure, and both Cabin and Cockpit Air Conditioning. Windlass with up/down controls and numerous extras make this a standout choice for yacht sales in the current boat location. NO SALES TAX IN RI!!

Basic Information

Category: Sport Fisherman
Model Year: 2006

Sub category:
Year Built: 2005

Country: United States

Dimensions

LOA: 40' 0" (12.29 mm)

Beam: 14

Min Draft: 9' 10" (3 mm)

Max Draft: 11' 6" (11.483 mm)

Speed, Capacities and Weight

Cruise Speed: 26 Knots (29.92 MPH)

Cruise Speed Range: 0 Kts.

Max Speed: 38 Knots (43.73 MPH)

Max Speed Range: 0 Kts.

Gross Tonnage: 26 Pounds

Water Capacity: 52 Gallons.

Holding Tank: 0 Gallons

Fuel Capacity: 400 Gallons

Accommodations

Total Cabins: 0

Total Berths: 0

Sleeps: 3

Total Heads: 1

Crew Cabin: 0

Crew Berths: 0

Crew Heads: 0

Hull and Deck Information

Hull Material: Fiberglass and Plastic Yachts

Deck Material: Fiberglass

Hull Configuration: Deep Vee

Hull Designer: WELLCRAFT

Interior Designer: WELLCRAFT

Engine Information

Engines: 2

Manufacturer: Cummins

Engine Type: Inboard

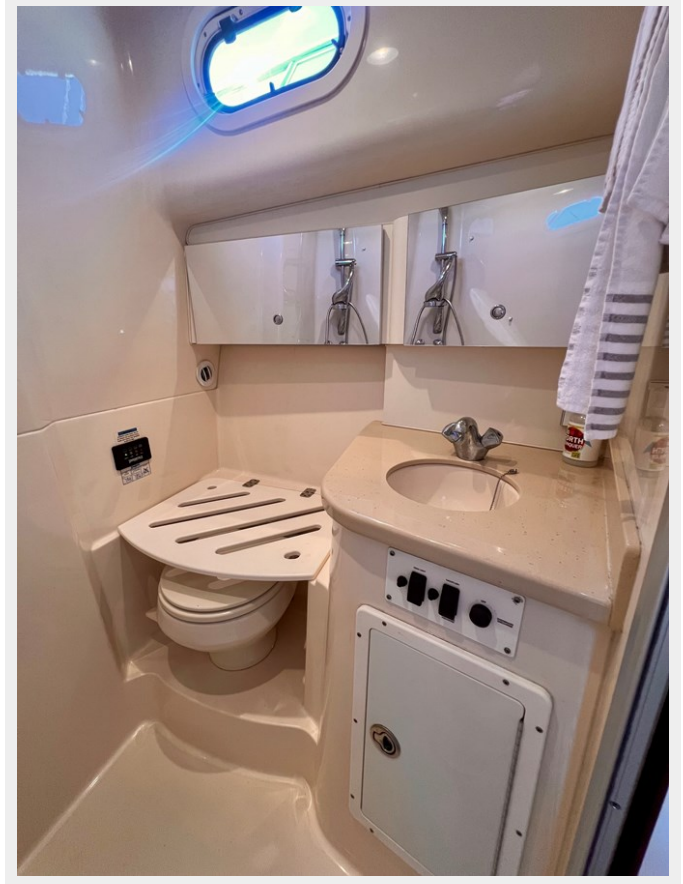
Fuel Type: Diesel

PHOTOS

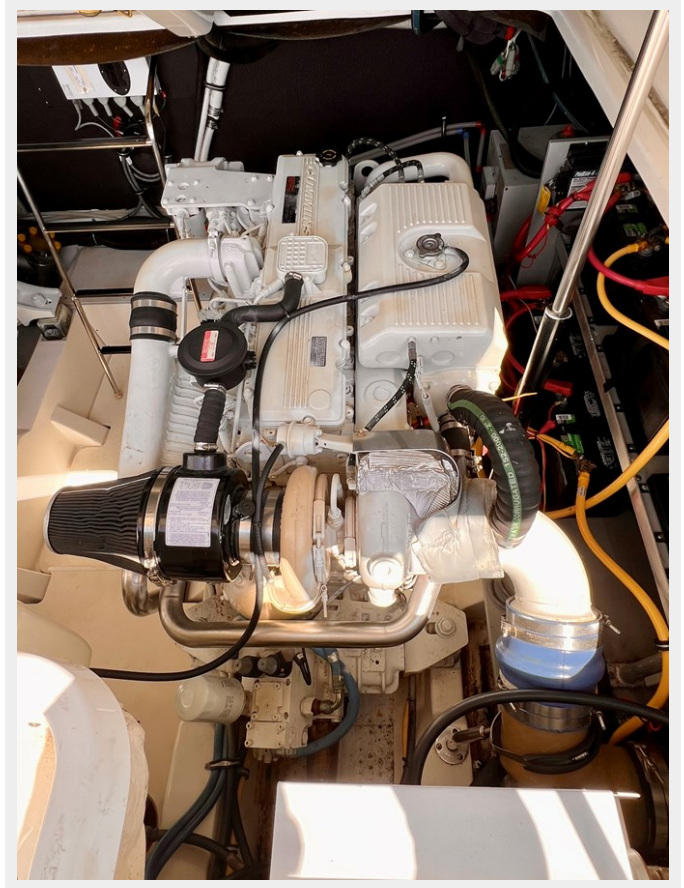
















CONTACTS

Andrey Shestakov, leading yacht broker of the sales department of Shestakov Yacht Sales Inc. Shestakov Yacht Sales Inc., the official representative of the Miami/Fort Lauderdale FL headquarters.

Contact details

Email: andrey@shestakovyachtsales.com

Web: shestakovyachtsales.com/en/

Telephones

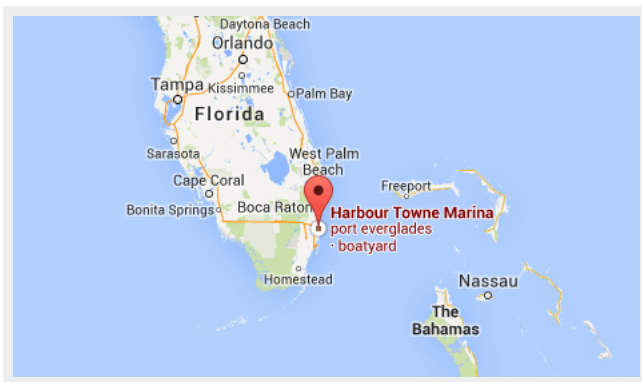
USA: +1(954)274-4435

Office hours

Monday – Saturday: **9:00 - 21:00** EDT

Sunday: **closed**

Address



Harbour Towne Marina, 850 NE 3rd St, STE 213,
Dania, FL 33004