



SHESTAKOV

Yacht Sales

ENCLOSED PILOTHOUSE – ABD ALUMINUM LTD



Builder:

ABD ALUMINUM LTD

Model:

Enclosed Pilothouse

LOA:

90' 0" (27.43 m)

Min Draft:

24' 4" (7.42 m)

Beam:

23' 0" (7.16 m)

Max Draft:

27' 7" (8.42 m)

Cruise Speed:

9 kn / 10.36 mph

Max Speed:

10 kn / 11.51 mph

Gross Tonnage:

172 Pounds

Water Capacity:

1450 Gallons

Fuel Capacity:

10300 Gallons

Sleeps:

3

If you would like to buy a yacht **ENCLOSED PILOTHOUSE – ABD ALUMINUM LTD** or would like help, please call +1(954)274-4435 or visit shestakovyachtsales.com

TABLE OF CONTENTS

OVERVIEW 3

- Selecting a Enclosed Pilothouse 3
- Features of the Model 3
- Technical Specifications 4
- Pricing and Ordering 4
- Questions and Answers 5
- Owner Experience Review 5
- Pros and Cons 6
- Comparison with Other Models 7

SPECIFICATIONS 8

GALLERY 9

CONTACTS 14

OVERVIEW

The Enclosed Pilothouse from ABD ALUMINUM LTD is a purpose-designed motor yacht built for true expedition yacht capability on a rugged aluminum hull. This model is offered internationally through Shestakov Yacht Sales with broker Andrey Shestakov handling inquiries.

Selecting a Enclosed Pilothouse

Opt for the Enclosed Pilothouse when your priorities include all-weather helm protection, extended range autonomy, and the robustness of a full-displacement platform. With a large fuel capacity of 10,300 gallons, 1,450 gallons of potable water, and a volume of 172 GT, it is tailored to owners planning demanding blue water itineraries consistent with an expedition program while maintaining the livability expected of a high quality motor yacht. Its heavy-duty aluminum hull and a 23 ft beam enhance seakeeping and structural longevity, and dedicated crew accommodations allow for professional operation when required.

Features of the Model

- Full-displacement hull form providing steady motion and efficient passage-making at displacement speeds
- Twin inboard Caterpillar diesel engines for dependable worldwide parts and service support
- Robust, low-maintenance aluminum hull paired with aluminum deck construction
- Enclosed pilothouse that delivers protected, confident watchkeeping in adverse weather
- Generous tankage with 10,300 gal fuel and 1,450 gal fresh water enabling

extended offshore legs

- Functional accommodation plan with separate crew areas (2 crew cabins, 4 crew berths)

Technical Specifications

- Length overall (LOA): 90 ft (27.43 m)
- Beam: 23 ft (7.16 m)
- Draft (min-max): 24.333–27.614 ft (7.4166–8.4166 m)
- Gross tonnage: 172 GT
- Hull configuration: Full Displacement
- Hull material: aluminum
- Deck material: Aluminum
- Engines: 2 × Caterpillar, Inboard, Diesel
- Cruising speed: 9 knots (10.36 mph)
- Maximum speed: 10 knots (11.51 mph)
- Fuel capacity: 10,300 gal
- Water capacity: 1,450 gal
- Accommodation count: 7; Sleeps: 3; Heads: 5
- Crew: 2 crew cabins; 4 crew beds

Pricing and Ordering

To obtain up to date pricing, delivery timelines, or to book a private inspection of the Enclosed Pilothouse by ABD ALUMINUM LTD, please reach out to Andrey Shestakov at Shestakov Yacht Sales. Our brokerage team will assist you through specification review, survey coordination, and the transactional steps from initial contact to closing.

Questions and Answers

- What type of yacht is the Enclosed Pilothouse? The vessel is a purpose-built motor yacht designed with an emphasis on expedition cruising, constructed on a durable aluminum hull.
- How large is it, and what is the draft? The **LOA** measures 90 ft (27.43 m) and the **beam** is 23 ft (7.16 m). **Draft** varies between 24.333 ft and 27.614 ft (7.4166–8.4166 m), a key consideration for route planning and marina access.
- What are the performance figures? The yacht's **cruising speed** is 9 knots (10.36 mph) with a **maximum speed** of 10 knots (11.51 mph). These figures are supported by a **Full Displacement** hull that favors stability and fuel efficiency at transit speeds.
- How is it powered and what are the capacities? Propulsion comes from twin **Caterpillar inboard diesel** engines. Fuel capacity stands at 10,300 gallons and **water capacity** is 1,450 gallons, sized to support lengthy offshore voyages.
- How do I buy or arrange a viewing? Contact **Andrey Shestakov** at **Shestakov Yacht Sales** to explore availability and next steps for the Enclosed Pilothouse by ABD ALUMINUM LTD. We handle inspections, offers, and closings with meticulous coordination.

Owner Experience Review

Owners tend to select the Enclosed Pilothouse from ABD ALUMINUM LTD when they seek a serious, owner piloted expedition platform. Listings for the 1996 ROSA reference an approximate ~5,000 NM range and recorded ocean crossings, reflecting the builder's reputation for commercial grade aluminum construction and capable offshore performance. Reviewers often note the enclosed wheelhouse's spaciousness and a distinct "big ship" ambience, fitting for extended watches at ROSA's reported cruise of ~9 knots and top speed ~10 knots.

Daily life aboard skews toward practical comfort designed for long legs at sea. On ROSA the pilothouse reportedly provides roughly 270° sightlines with three leather helm seats and an elevated leather settee seating six; brokers also highlight a notably large master stateroom located aft of the wheelhouse with its own private deck. Market examples typically offer modest guest arrangements (around 2–3 cabins) optimized for liveaboard use. ROSA's outfitting illustrates adaptability for adventure cruising, having supported multiple owners and families for more than 50,000 ocean miles and configured as a diving and fishing platform with a compressor and racks for 10 tanks.

Prospective owners should plan for consistent preventative upkeep. Sales records for older hulls indicate significant services over time—complete engine and transmission overhauls, Naiad stabilizer rebuilds, as well as watermaker and A/C maintenance—while industry commentary applauds engine room access and installation quality, with a Cummins case study describing an ABD engine room as “immaculate.” Aluminum construction adds a requirement for periodic inspection of welds and galvanic protection. Specifics and figures vary by hull and year; the examples above are drawn from documented ROSA listings and yard reports.

Pros and Cons

- Commercial grade aluminum construction and expedition readiness make it well suited for extended ocean passages.
- Generous enclosed pilothouse with approximately 270° visibility and a pronounced “big ship” feel enhances long watch comfort.
- The ROSA example demonstrates around a ~5,000 NM range and practical dive/fishing outfitting for extended adventures.
- Full displacement characteristics limit top speed, with ROSA reported near 9–10 knots.
- Guest accommodations are usually modest (approximately 2–3 cabins)

compared with many yachts of similar overall length.

- Older vessels may demand substantial refit budgets for engines, transmissions, stabilizers, watermakers, and A/C systems.

Comparison with Other Models

Model	LOA	Beam	Draft	Speed (Cruising/Max)	Gross Tonnage
Enclosed Pilothouse	90' 0" (27.43 m)	23' 0" (7.16 m)	24' 4" (7.42 m) – 27' 7" (8.42 m)	9 kn / 10 kn	172

SPECIFICATIONS

LOA:

90' 0" (27.43 m)

Beam:

23' 0" (7.16 m)

Cruise Speed:

9 kn / 10.36 mph

Gross Tonnage:

172 Pounds

Fuel Capacity:

10300 Gallons

Sleeps:

3

Crew Cabin:

2

Hull Material:

Aluminum Yachts

Hull Configuration:

Full Displacement

Engines:

2

Engine Type:

Inboard

Min Draft:

24' 4" (7.42 m)

Max Draft:

27' 7" (8.42 m)

Max Speed:

10 kn / 11.51 mph

Water Capacity:

1450 Gallons

Total Heads:

5

Crew Berths:

4

Deck Material:

Aluminum

Manufacturer:

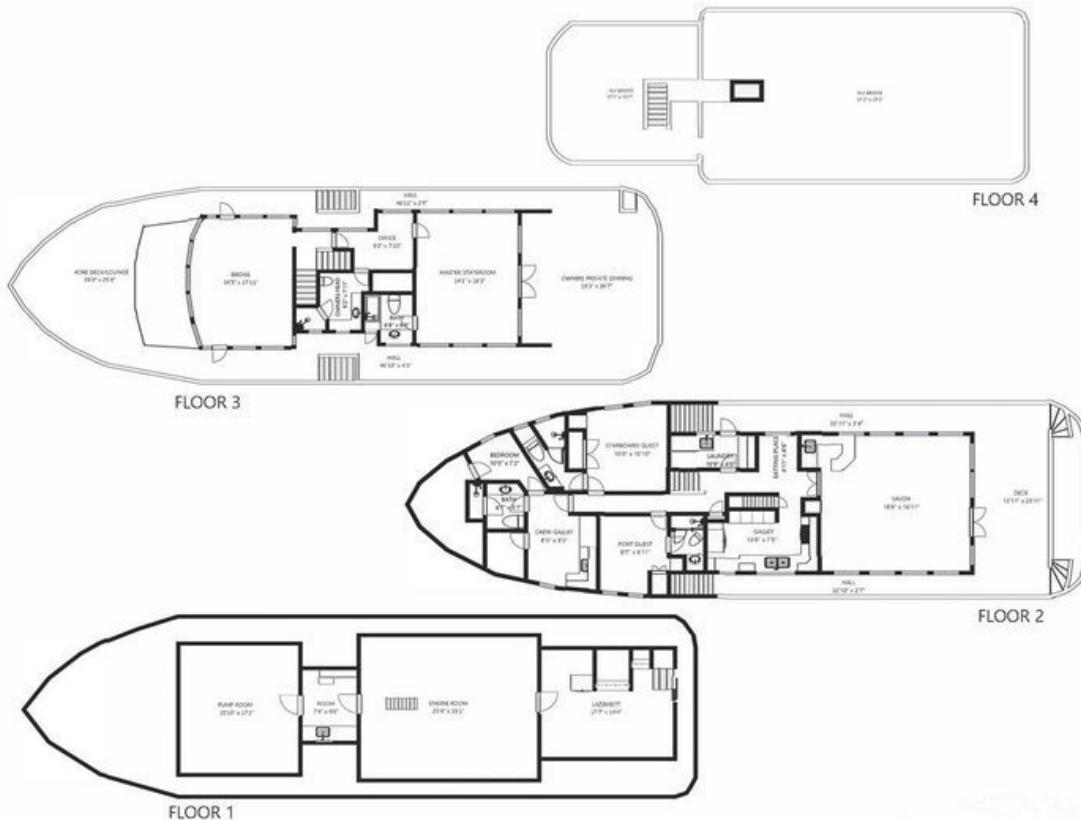
Caterpillar

Fuel Type:

Diesel

GALLERY





Actual size and dimensions may vary

AREMAC PHOTOGRAPHY







CONTACTS

Shestakov Yacht Sales is a brokerage company specializing in the sale and service of yachts worldwide. The company offers services for buying and selling both new and used motor yachts, sailing vessels, and luxury superyachts. They also provide yacht registration, insurance, technical maintenance, crew selection, and charter organization services across the U.S., Canada, Latin America, the Caribbean, and the Bahamas.

The founder and lead broker of the company is Andrey Shestakov, a licensed and certified expert with extensive experience in marine engineering and shipbuilding.

The company has an extensive network of partnerships with major yacht manufacturers worldwide and provides services in multiple languages, including Russian, Ukrainian, Spanish, and English. The office is in Dania Beach, Florida, USA.

For more information and to view available yachts, you can visit the company's official website: <https://shestakovyachtsales.com>

Contact details

Phone: +1(954)274-4435

Email: andrey@shestakovyachtsales.com

Address



1380 Weeping Willow Way, Hollywood,
Florida 33019