



SHESTAKOV

Yacht Sales

## EXPLORER – ALL OCEAN YACHTS



**Builder:**

ALL OCEAN YACHTS

**Model:**

Explorer

**LOA:**

103' 0" (31.39 m)

**Min Draft:**

24' 1" (7.33 m)

**Beam:**

24' 0" (7.52 m)

**Max Draft:**

26' 3" (8 m)

**Cruise Speed:**

10 kn / 11.51 mph

**Max Speed:**

13 kn / 14.96 mph

**Water Capacity:**

3000 Gallons

**Fuel Capacity:**

9800 Gallons

**Sleeps:**

8

**Total Heads:**

5

If you would like to buy a yacht **EXPLORER – ALL OCEAN YACHTS** or would like help, please call +1(954)274-4435 or visit [shestakovyachtsales.com](http://shestakovyachtsales.com)

---

# TABLE OF CONTENTS

---

<b>OVERVIEW .....</b>	<b>3</b>
<b>Selecting the Explorer .....</b>	<b>3</b>
<b>Features of the Model .....</b>	<b>3</b>
<b>Technical Specifications .....</b>	<b>4</b>
<b>Pricing and Ordering .....</b>	<b>4</b>
<b>Questions and Answers .....</b>	<b>5</b>
<b>Owner Experience Review .....</b>	<b>5</b>
<b>Pros and Cons .....</b>	<b>6</b>
<b>Comparison with Other Models .....</b>	<b>7</b>
<b>SPECIFICATIONS .....</b>	<b>8</b>
<b>GALLERY .....</b>	<b>9</b>
<b>CONTACTS .....</b>	<b>14</b>

# OVERVIEW

---

Presented by Shestakov Yacht Sales and broker Andrey Shestakov, the Explorer from ALL OCEAN YACHTS is a motor yacht built for long range expedition voyaging. Its construction uses fiberglass and plastic with a displacement hull and a bulbous bow. Measuring 103 ft (31.39 m) overall with a 24 ft (7.52 m) beam, the design merges ocean going capability with comfortable, extended stay interiors by Luiz de Basto Design.

## Selecting the Explorer

---

When constant passagemaking, uncomplicated systems, and a rugged build are priorities, the Explorer becomes an obvious choice. Its Displacement w Bulbous Bow hull form is tuned for efficient performance at a 10 knot cruise and offers dependable behavior offshore. Designed as a motor yacht for expedition cruising, it pairs family friendly living spaces with practical crew accommodations, making it well suited to extended itineraries supported by substantial fuel and water capacity.

## Features of the Model

---

- A true ocean posture derived from the Displacement w Bulbous Bow layout, delivering composed motion and enhanced seakeeping.
- Twin Caterpillar inboard engines provide propulsion and broad global service network support.
- Comfortable continuous speed at 10 kn (11.51 mph) with the ability to reach 13 kn (14.96 mph) when needed for schedule flexibility.
- Fuel and water capacities sized for long autonomy: roughly 9,800 gal of fuel and 3,000 gal of potable water.
- Interior architecture by Luiz de Basto Design arranged for up to 11 people

aboard, including 8 guest berths, 5 heads, and a dedicated crew section (3 cabins/5 berths).

- Durable material selection: fiberglass and plastic hull paired with a fiberglass deck for longevity and reduced maintenance.

## Technical Specifications

---

- Builder: ALL OCEAN YACHTS
- Model: Explorer
- Type: a motor yacht optimized for expedition cruising
- Hull: fiberglass and plastic; configuration: Displacement w Bulbous Bow; deck: Fiberglass
- LOA: 103 ft (31.39 m)
- Beam: 24 ft (7.52 m)
- Draft (min/max): 24.059 ft (7.3333 m) / 26.247 ft (8 m)
- Cruise speed: 10 kn (11.51 mph)
- Max speed: 13 kn (14.96 mph)
- Engines: 2 × Caterpillar; type: Inboard; fuel: Diesel
- Capacities: Fuel 9,800 gal; Fresh water 3,000 gal
- Interior designer: Luiz de Basto Design
- Accommodation: up to 11 aboard; sleeps 8; heads 5; crew: 3 cabins / 5 berths

## Pricing and Ordering

---

For details on current pricing, lead times, and the ordering process for the Explorer from ALL OCEAN YACHTS, please contact Andrey Shestakov at Shestakov Yacht Sales. Our brokerage team will assist with specification reviews, inspections, and the transactional steps needed to align the vessel to your cruising program.

---

## Questions and Answers

---

Q: What type of yacht is the Explorer? A: It is a motor yacht designed specifically for expeditions, built on a fiberglass and plastic hull with a Displacement w Bulbous Bow configuration to enhance **seakeeping** and **efficiency** .

Q: What are the Explorer performance figures? A: The vessel's **cruising speed** is 10 kn (11.51 mph) and the **maximum speed** is 13 kn (14.96 mph). The displacement hull with its **bulbous bow** is optimized for stable, efficient passage speeds.

Q: How many people can stay aboard comfortably? A: The layout accommodates up to 11 people aboard, with **sleeping** capacity for 8 guests, 5 heads, and a defined **crew** sector comprising 3 cabins and 5 berths.

Q: What are the propulsion and tankage details? A: Propulsion comes from two Caterpillar **inboard diesel** engines. Tankage includes approximately 9,800 gal of **fuel capacity** and 3,000 gal of fresh water.

Q: Who should I contact to purchase or inspect the yacht? A: Contact **Andrey Shestakov** at **Shestakov Yacht Sales** for enquiries, surveys, and purchase coordination for the Explorer by ALL OCEAN YACHTS.

---

## Owner Experience Review

---

Sales materials and design commentary position the Explorer from ALL OCEAN YACHTS as a platform intended for prolonged global cruising, with generous tankage and storage planned to support lengthy periods away from supply points. The Overing full displacement, high efficiency hull is reported to reduce fuel consumption at given RPMs and deliver predictable seakeeping for offshore legs. Both steel and fiberglass construction options are referenced,

with steel versions typically offering greater displacement and different roll and momentum characteristics compared with composite builds.

Aboard, the priority is comfortable long term living. Typical examples in the 100'–105' range often present four cabins plus dedicated crew quarters, while larger adaptations include an owner deck located just aft of the pilothouse. Sales literature and specification sheets indicate that layouts and onboard systems have been refined with input from owners, captains, and yacht crews, with emphasis on increased storage, provisioning capacity, and efficient galley and crew ergonomics. Deck configurations and garage/foredeck choices are arranged to support expedition gear, tenders, and water toys, and some Overing inspired builds are marketed with options for commercial/MCA compliance or charter operation readiness.

There is limited open access long term owner forum data and few published failure logs, so much practical guidance comes from brokers, designers, and industry specialists. Advisors stress the critical nature of choosing an appropriate hull material and correctly sized generators and auxiliary systems for genuine long range use, and they recommend a comprehensive pre purchase survey and systems inspection—especially in cases where engine room access and service history are not fully available in public documentation.

## Pros and Cons

---

- Long range, world cruising orientation with expansive tankage and storage for remote operations.
- Overing full displacement, high efficiency hull aims to reduce fuel burn and provide steady offshore performance.
- Generous interior plans with four cabins plus separate crew quarters and dedicated storage to support extended provisioning.

- Selecting between steel and composite construction brings distinct trade offs in overall weight, roll response, and maintenance demands.
- Pursuing commercial/MCA or charter capability can add regulatory layers and associated expense.
- Sparse public owner feedback increases dependence on professional surveys and expert systems evaluations.

## Comparison with Other Models

Model	LOA	Beam	Draft	Speed (Cruising/Max)	Gross Tonnage
Explorer	103' 0" (31.39 m)	24' 0" (7.52 m)	24' 1" (7.33 m) – 26' 3" (8 m)	10 kn / 13 kn	
Super Sport	53' 0" (16.15 m)	16' 0" (4.98 m)	14' 3" (4.33 m)	25 kn / 38 kn	
Ocean Rover	132' 0" (40.23 m)	30' 0" (9.37 m)	23' 9" (7.25 m) – 26' 10" (8.17 m)	12 kn / 14 kn	
AOYO 100	100' 0" (30.50 m)	25' 0" (7.90 m)	25' 12" (7.92 m)	10 kn / 14 kn	
Tri - Deck Explorer Yacht	90' 0" (27.43 m)	24' 0" (7.52 m)	24' 1" (7.33 m) – 26' 3" (8 m)	10 kn / 13 kn	
Tri- Deck Explorer Yacht	100' 0" (30.48 m)	24' 0" (7.52 m)	24' 1" (7.33 m) – 26' 3" (8 m)	10 kn / 13 kn	
Tri-Deck Explorer	120' 0" (36.58 m)	29' 0" (8.84 m)		12 kn	430

# SPECIFICATIONS

**LOA:**

103' 0" (31.39 m)

**Beam:**

24' 0" (7.52 m)

**Cruise Speed:**

10 kn / 11.51 mph

**Water Capacity:**

3000 Gallons

**Sleeps:**

8

**Crew Cabin:**

3

**Hull Material:**

Fiberglass and Plastic Yachts

**Hull Configuration:**

Displacement w Bulbous Bow

**Engines:**

2

**Engine Type:**

Inboard

**Min Draft:**

24' 1" (7.33 m)

**Max Draft:**

26' 3" (8 m)

**Max Speed:**

13 kn / 14.96 mph

**Fuel Capacity:**

9800 Gallons

**Total Heads:**

5

**Crew Berths:**

5

**Deck Material:**

Fiberglass

**Interior Designer:**

Luiz de Basto Design

**Manufacturer:**

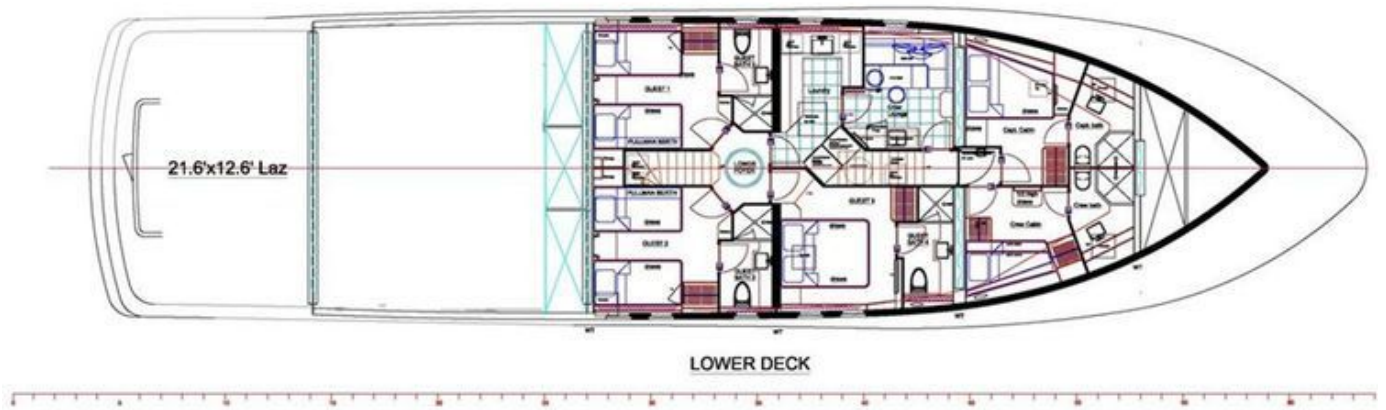
Caterpillar

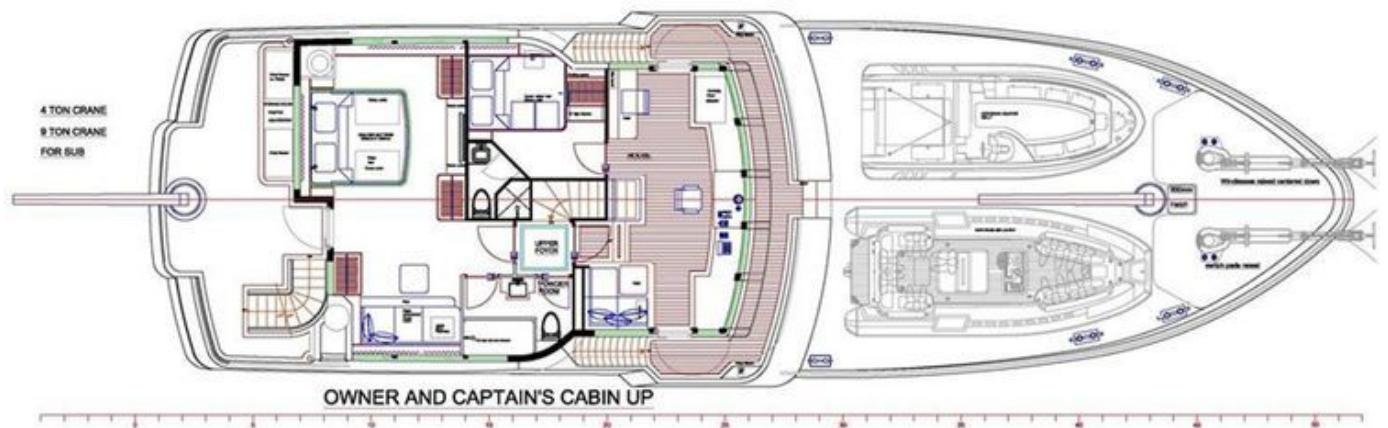
**Fuel Type:**

Diesel

# GALLERY











# CONTACTS

---

Shestakov Yacht Sales is a brokerage company specializing in the sale and service of yachts worldwide. The company offers services for buying and selling both new and used motor yachts, sailing vessels, and luxury superyachts. They also provide yacht registration, insurance, technical maintenance, crew selection, and charter organization services across the U.S., Canada, Latin America, the Caribbean, and the Bahamas.

The founder and lead broker of the company is Andrey Shestakov, a licensed and certified expert with extensive experience in marine engineering and shipbuilding.

The company has an extensive network of partnerships with major yacht manufacturers worldwide and provides services in multiple languages, including Russian, Ukrainian, Spanish, and English. The office is in Dania Beach, Florida, USA.

For more information and to view available yachts, you can visit the company's official website: <https://shestakovyachtsales.com>

## Contact details

---

**Phone:** +1(954)274-4435

**Email:** [andrey@shestakovyachtsales.com](mailto:andrey@shestakovyachtsales.com)

## Address

---



1380 Weeping Willow Way, Hollywood,  
Florida 33019