



SHESTAKOV

Yacht Sales

16 X 68 WIDEBODY - AQUA CHALET



Builder:

AQUA CHALET

Model:

16 x 68 Widebody

LOA:

68' 0" (20.73 m)

Beam:

16' 0" (4.88 m)

Max Draft:

9' 10" (3 m)

Water Capacity:

160 Gallons

Fuel Capacity:

128 Gallons

Sleeps:

4

Total Heads:

2

Hull Material:

Aluminum Yachts

Deck Material:

Aluminum

Hull Configuration:

Semi-Displacement

If you would like to buy a yacht **16 X 68 WIDEBODY - AQUA CHALET** or would like help, please call +1(954)274-4435 or visit shestakovyachtsales.com

TABLE OF CONTENTS

OVERVIEW 3

- Selecting a 16 x 68 Widebody 3
- Features of the Model 3
- Technical Specifications 4
- Pricing and Ordering 4
- Questions and Answers 4
- Owner Experience Review 5
- Pros and Cons 6
- Comparison with Other Models 7

SPECIFICATIONS 8

GALLERY 9

CONTACTS 14

OVERVIEW

The 16 x 68 Widebody from AQUA CHALET is a generously proportioned motor yacht crafted for houseboat style cruising, built on a sturdy aluminum hull. This model is offered through Shestakov Yacht Sales with broker Andrey Shestakov handling representation.

Selecting a 16 x 68 Widebody

Opting for the 16 x 68 Widebody places an emphasis on roomy interiors, straightforward upkeep, and practical cruising capability. Measuring 68 ft (20.73 m) overall with a 16 ft (4.88 m) beam, it creates ample living space for socializing and extended onboard stays. Twin Mercruiser I/O Gas/Petrol engines provide confident control in tight spots, while the Semi-Displacement hull and aluminum construction prioritize efficiency and long-term resilience. Configured as a motor yacht suited to houseboat living, the design lists capacity for up to 8 people, sleeping arrangements for 4, and 2 heads. For details on stock, layout options, or to schedule an inspection, contact Shestakov Yacht Sales and broker Andrey Shestakov.

Features of the Model

- Purpose-built as a motor yacht with versatile houseboat comfort
- Strong, low-maintenance aluminum hull and Aluminum deck
- Semi-Displacement hull configuration for composed handling
- LOA 68 ft (20.73 m); beam 16 ft (4.88 m); max draft 9.843 ft (3 m)
- Twin Mercruiser I/O engines; Gas/Petrol fuel
- Accommodations for up to 8; sleeps 4; 2 heads
- Tankage: water 160 gal; fuel 128 gal
- Built by AQUA CHALET

Technical Specifications

- Model: 16 x 68 Widebody
- Builder: AQUA CHALET
- Classification: motor yacht / houseboat
- Hull: aluminum; configuration: Semi-Displacement
- Deck material: Aluminum
- LOA: 68 ft (20.73 m)
- Beam: 16 ft (4.88 m)
- Max draft: 9.843 ft (3 m)
- Engines: 2 x Mercruiser
- Engine type: I/O
- Fuel: Gas/Petrol
- Accommodation count: 8
- Sleeps: 4
- Heads: 2
- Water capacity: 160 gal
- Fuel capacity: 128 gal

Pricing and Ordering

To obtain current pricing, check availability, or arrange a walkthrough of the 16 x 68 Widebody, please reach out to Shestakov Yacht Sales. Broker Andrey Shestakov is available to guide you through specifications, submit offers, and coordinate delivery logistics.

Questions and Answers

Q: Who builds the 16 x 68 Widebody? A: The builder is AQUA CHALET, known for **reliable construction** and **functional layouts** .

Q: What are the length and beam? A: The **LOA** is 68 ft (20.73 m) and the **beam** is 16 ft (4.88 m), offering generous **interior volume** .

Q: What engines and fuel type does it have? A: It features **twin Mercruiser I/O** engines running on **Gas/Petrol** for straightforward operation and service.

Q: What hull type and material does it use? A: The hull is **Semi-Displacement** with aluminum construction and an **Aluminum** deck for durability.

Q: How many people can it accommodate and sleep? A: It provides **accommodations** for up to **8** , with **sleeps** for **4** and **2 heads** for added convenience.

Owner Experience Review

Owners and brokers typically describe the 16 x 68 Widebody by AQUA CHALET as ideal for lake-based family cruising, liveaboard scenarios, and social entertaining. Listings frequently indicate three staterooms (a queen master and two guest cabins) plus two full heads, with sleeping capacity reported around eight; they also note a full galley outfitted with residential-style appliances and integrated central heat/air systems. The spacious salon and entertainment configuration—often including a wet bar and a 55" TV in recent advertisements—are tailored to weekend hosting, while the dual-helm flybridge with a 16' party top, water slide, and an expansive swim platform emphasize its strengths as a party-oriented platform.

On the water, owners emphasize that the semi displacement aluminum hull favors comfort and a steady ride rather than high-speed performance. With twin MerCruiser 4.3L I/Os, the boat delivers acceptable low-to-moderate cruising capability; it maintains composure in normal lake chop at reasonable speeds but is not intended for severe weather conditions or fast long-distance passages. Many examples are moored on lakes with transferable slips (Norris

Lake is mentioned in listings), underscoring its focus on weekend and seasonal use.

Maintenance commentary is pragmatic and hands-on. Aluminum hulls and pontoons can show a persistent scum line; owners report success with acid-based aluminum cleaners (brands like NAPA cited), followed by Scotchbrite scrubbing and thorough elbow grease. Powerplant notes appearing in ads commonly include a 12.5 kW Westerbeke generator and occasionally a lack of engine hour meters—buyers are advised to confirm service history. Owner forums also point to recurring MerCruiser 4.3 concerns—starting and idle irregularities, overheating linked to sea-pump/impeller wear, and carburetor/EFI tuning—so a comprehensive pre-purchase survey is recommended.

Pros and Cons

- Three cabins and two full baths with sleeping for about eight support family cruising or liveaboard use.
- Full galley with residential style appliances and central HVAC enhances comfort on extended lake stays.
- Dual helm flybridge, 16' party top, water slide, and large swim platform suit entertaining.
- Semi displacement setup and twin 4.3L I/Os deliver modest speeds and are not for fast passages.
- Not designed for heavy weather; best in moderate lake chop at sensible speeds.
- Aluminum scum line cleanup and common 4.3L I/O issues (starting/idle/overheating) demand diligent maintenance and service record verification.

Comparison with Other Models

Model	LOA	Beam	Draft	Speed (Cruising/Max)	Gross Tonnage
16 x 68 Widebody	68' 0" (20.73 m)	16' 0" (4.88 m)	9' 10" (3 m)		

SPECIFICATIONS

LOA:

68' 0" (20.73 m)

Max Draft:

9' 10" (3 m)

Water Capacity:

160 Gallons

Sleeps:

4

Hull Material:

Aluminum Yachts

Hull Configuration:

Semi-Displacement

Engines:

2

Engine Type:

I/O

Beam:

16' 0" (4.88 m)

Fuel Capacity:

128 Gallons

Total Heads:

2

Deck Material:

Aluminum

Manufacturer:

Mercruiser

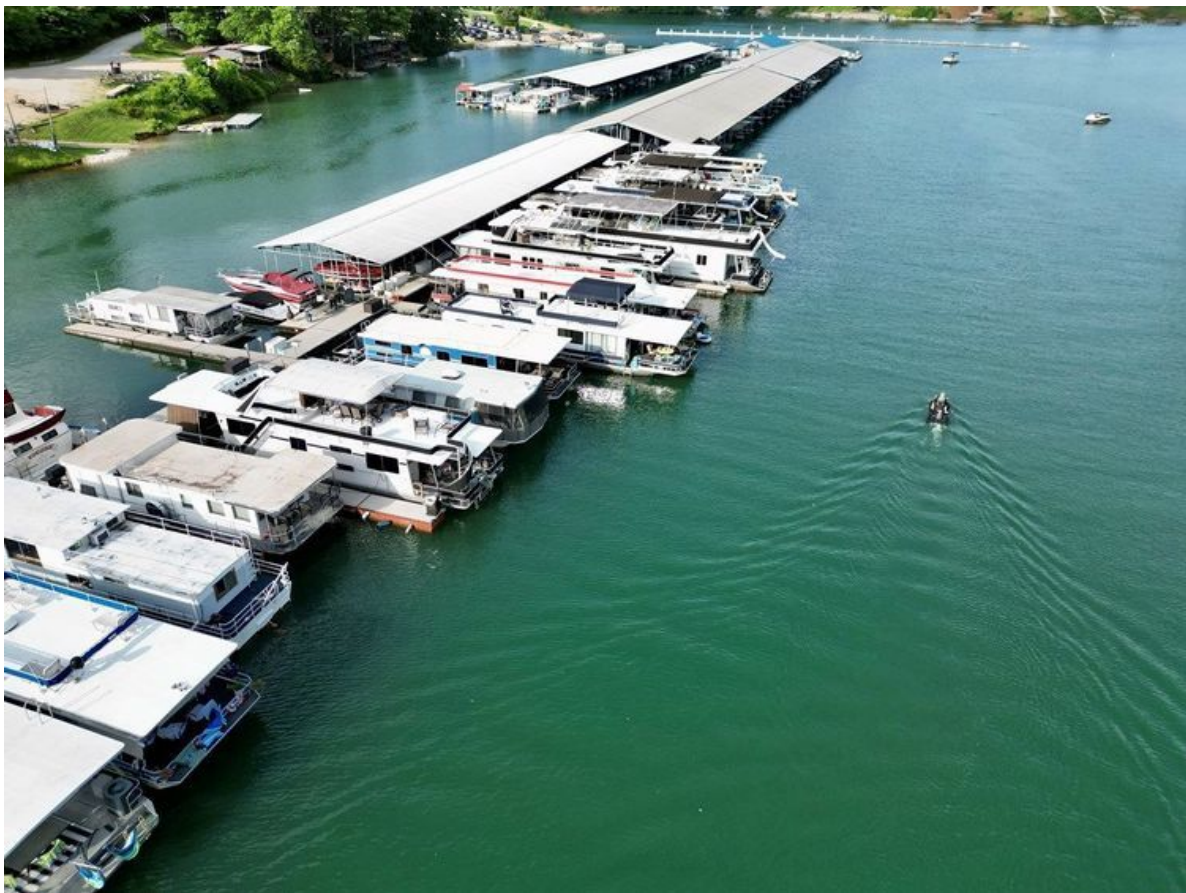
Fuel Type:

Gas/Petrol

GALLERY











CONTACTS

Shestakov Yacht Sales is a brokerage company specializing in the sale and service of yachts worldwide. The company offers services for buying and selling both new and used motor yachts, sailing vessels, and luxury superyachts. They also provide yacht registration, insurance, technical maintenance, crew selection, and charter organization services across the U.S., Canada, Latin America, the Caribbean, and the Bahamas.

The founder and lead broker of the company is Andrey Shestakov, a licensed and certified expert with extensive experience in marine engineering and shipbuilding.

The company has an extensive network of partnerships with major yacht manufacturers worldwide and provides services in multiple languages, including Russian, Ukrainian, Spanish, and English. The office is in Dania Beach, Florida, USA.

For more information and to view available yachts, you can visit the company's official website: <https://shestakovyachtsales.com>

Contact details

Phone: +1(954)274-4435

Email: andrey@shestakovyachtsales.com

Address



1380 Weeping Willow Way, Hollywood,
Florida 33019