



SHESTAKOV

Yacht Sales

## 34 - ARNO LEOPARD



**Builder:**

ARNO LEOPARD

**Model:**

34

**LOA:**

111' 0" (34.10 m)

**Beam:**

23' 0" (7.04 m)

**Max Draft:**

3' 11" (1.20 m)

**Cruise Speed:**

28 kn / 32.22 mph

**Max Speed:**

36 kn / 41.43 mph

**Gross Tonnage:**

184 Pounds

**Water Capacity:**

528.34 Gallons

**Fuel Capacity:**

4226.75 Gallons

**Sleeps:**

5

**Total Heads:**

5

If you would like to buy a yacht **34 - ARNO LEOPARD** or would like help, please call +1(954)274-4435 or visit [shestakovyachtsales.com](http://shestakovyachtsales.com)

---

# TABLE OF CONTENTS

---

<b>OVERVIEW .....</b>	<b>3</b>
<b>Selecting a 34 .....</b>	<b>3</b>
<b>Features of the Model .....</b>	<b>3</b>
<b>Technical Specifications .....</b>	<b>4</b>
<b>Pricing and Ordering .....</b>	<b>5</b>
<b>Questions and Answers .....</b>	<b>5</b>
<b>Owner Experience Review .....</b>	<b>5</b>
<b>Pros and Cons .....</b>	<b>7</b>
<b>Comparison with Other Models .....</b>	<b>7</b>
<b>SPECIFICATIONS .....</b>	<b>8</b>
<b>GALLERY .....</b>	<b>9</b>
<b>CONTACTS .....</b>	<b>14</b>

## OVERVIEW

---

The ARNO LEOPARD 34 represents a high-speed offering in the motor yacht category, capable of sustained 28 knot cruising and a 36 knot top end using three MTU inboard diesel engines. The 111 ft (34.1 m) monohull combines a fiberglass and plastic hull with a GRP deck, penned by Andrea Bacigalupo with interiors completed by Rodriguez Interiors. Presented by Shestakov Yacht Sales — speak with broker Andrey Shestakov to discuss availability and arrange inspections.

## Selecting a 34

---

Opt for the ARNO LEOPARD 34 if top-end performance, limited draft capability, and notable design credentials are priorities. Measuring 111 ft (34.1 m) overall with a 23 ft (7.04 m) beam and a maximum draft of only 3.937 ft (1.2 m), this motor yacht blends rapid transit, generous living areas, and the flexibility to navigate shallower anchorages and coastal routes.

## Features of the Model

---

- Propulsion by three MTU inboard diesel engines delivering a 28 kn cruising speed and a 36 kn maximum.
- Hull architecture by Andrea Bacigalupo with interior styling by Rodriguez Interiors.
- Monohull form built with a fiberglass and plastic hull and finished with a GRP deck.
- Capacities suited for extended runs: 4,226.75 gal fuel capacity and 528.34 gal freshwater capacity.
- Accommodation layout provides Accommodation count 8, Sleeps 5, Heads 5, and 6 crew beds.

- A gross tonnage of 184 GT offering substantial internal volume for a yacht of this length.
- Positioned in the motor yachts market as a high-performance motor yacht.

## Technical Specifications

---

- Builder: ARNO LEOPARD
- Model: 34
- Category: motor yachts; Sub-category: motor yacht
- LOA: 111 ft (34.1 m)
- Beam: 23 ft (7.04 m)
- Draft (max): 3.937 ft (1.2 m)
- Hull configuration: Monohull
- Hull designer: Andrea Bacigalupo
- Interior designer: Rodriguez Interiors
- Hull material: fiberglass and plastic
- Deck material: GRP
- Gross tonnage: 184 GT
- Engines: 3 x MTU, Inboard, Diesel
- Cruising speed: 28 kn (32.22 mph)
- Maximum speed: 36 kn (41.43 mph)
- Fuel capacity: 4,226.75 gal
- Water capacity: 528.34 gal
- Accommodation count: 8
- Sleeps: 5
- Heads: 5
- Crew beds: 6

---

## Pricing and Ordering

---

To obtain up to date pricing, confirm availability, or book a sea trial of the ARNO LEOPARD 34, reach out to Shestakov Yacht Sales. Broker Andrey Shestakov manages selection guidance, offer negotiation, survey coordination, and closing steps to facilitate a smooth transaction.

---

## Questions and Answers

---

Q: What are the **cruising** and **top speeds** of the ARNO LEOPARD 34? A: The yacht maintains a cruising speed of **28 kn (32.22 mph)** and can achieve a **top speed of 36 kn (41.43 mph)** .

Q: How shallow can the yacht operate, and what is the maximum **draft** ? A: The yacht's maximum **draft** is **3.937 ft (1.2 m)** , enabling confident operation in many shallow water locations where depth permits.

Q: What **engines** power this motor yacht? A: Propulsion is provided by **3 x MTU Inboard Diesel** engines, offering robust acceleration and sustained cruising performance.

Q: What are the **hull** and **deck** construction details? A: The vessel features a Monohull hull constructed from fiberglass and plastic, while the **deck** is manufactured in **GRP** .

Q: How many people can stay on board, and what **accommodation** details are listed? A: The specification shows **Accommodation count: 8 , Sleeps: 5 , Heads: 5** , and **Crew beds: 6** .

---

## Owner Experience Review

---

Owners are drawn to the 34 from ARNO LEOPARD for its blend of high speed

and suitability for short overnight trips, rapid transfers, and island hopping itineraries that are common in Mediterranean charter operations. The planing deep V hull, triple MTU engines, and KaMeWa waterjets produce the expected dynamic performance: many owners report cruising in the 30–36 knot range with some listings indicating 40–45 knots at full throttle, together with brisk acceleration, good access in shallower waters, and very responsive low speed handling.

In terms of noise and vibration, attention to machinery space insulation and the adoption of quieter generators and exhaust systems during refits tend to reduce onboard sound levels both underway and at anchor. Externally, the yacht's layout emphasizes social spaces — expansive fore and aft sunbathing areas and generous alfresco dining platforms are frequently praised by charter operators. Below decks, the saloon typically supports fast turnarounds for charter work, while guest cabin arrangements differ between hulls: 3 to 5 cabin plans are typical, accommodating roughly 8–11 guests depending on the specific configuration. Numerous examples have received contemporary entertainment systems and updated furnishings in refits, which helps sustain market appeal.

From the maintenance and ownership side, the design offers sensible engine room access and overall serviceability, but the triple MTU 16V2000 engines coupled with waterjets do contribute to elevated operating expenses. Market listings commonly point to significant refit items—generator replacement or upgrades, teak deck renewals, A/C compressor servicing, watermaker and plumbing overhauls, and KaMeWa jet servicing—and reported fuel consumption of about 900–1,200 L/h at cruise, paired with large fuel tanks in the ~15–16k L range, highlight the vessel's fuel intensity. As many hulls originate from the 2000s–2010s, the boat's condition is largely a function of how comprehensively and recently refit work has been completed.

## Pros and Cons

- Fast, planing performance with commonly reported cruising speeds of 30–36 knots and listings noting 40–45 knot top ends.
- Waterjets afford shallow water capability, rapid acceleration, and highly accurate low speed handling.
- Generous fore and aft sunpads, dedicated alfresco dining areas, and a comfortable saloon; refitted boats often feature upgraded entertainment systems.
- Considerable fuel consumption at cruise (~900–1,200 L/h) leading to high operational costs with triple MTU 16V2000 installations.
- Owners should budget for periodic refits, including KaMeWa jet overhauls, generator work, teak renewals, A/C servicing, and watermaker/plumbing maintenance.
- Many builds are from the 2000s–2010s, so individual condition varies significantly based on the vessel's refit history.

## Comparison with Other Models

Model	LOA	Beam	Draft	Speed (Cruising/...	Gross...
27	88' 0" (26.98 m)	19' 0" (6.06 m)	7' 5" (2.25 m)	30 kn / 34 kn	
79 Cantiere Navale Arno	79' 0" (24.08 m)	17' 0" (5.18 m)	10' 11" (3.33 m)		
Leopard 24	78' 0" (23.90 m)	19' 0" (6 m)	2' 11" (0.90 m)	25 kn / 31 kn	66.54
31 Open	101' 0" (31 m)	20' 0" (6.25 m)	10' 8" (3.25 m)	28 kn / 36 kn	
34	111' 0" (34.10 m)	23' 0" (7.04 m)	3' 11" (1.20 m)	28 kn / 36 kn	184
Leopard 23	75' 0" (22.96 m)	17' 0" (5.31 m)		20 kn / 27 kn	
23	75' 0" (22.96 m)	17' 0" (5.36 m)			
Open Sport Yacht	101' 0" (30.78 m)	24' 0" (7.32 m)	13' 1" (4 m)	30 kn / 37 kn	
23 HT	75' 0" (22.86 m)	17' 0" (5.38 m)	17' 3" (5.25 m)	32 kn	

# SPECIFICATIONS

**LOA:**

111' 0" (34.10 m)

**Max Draft:**

3' 11" (1.20 m)

**Cruise Speed:**

28 kn / 32.22 mph

**Gross Tonnage:**

184 Pounds

**Fuel Capacity:**

4226.75 Gallons

**Sleeps:**

5

**Crew Berths:**

6

**Hull Material:**

Fiberglass and Plastic Yachts

**Hull Configuration:**

Monohull

**Interior Designer:**

Rodriguez Interiors

**Engines:**

3

**Engine Type:**

Inboard

**Beam:**

23' 0" (7.04 m)

**Max Speed:**

36 kn / 41.43 mph

**Water Capacity:**

528.34 Gallons

**Total Heads:**

5

**Deck Material:**

GRP

**Hull Designer:**

Andrea Bacigalupo

**Manufacturer:**

MTU

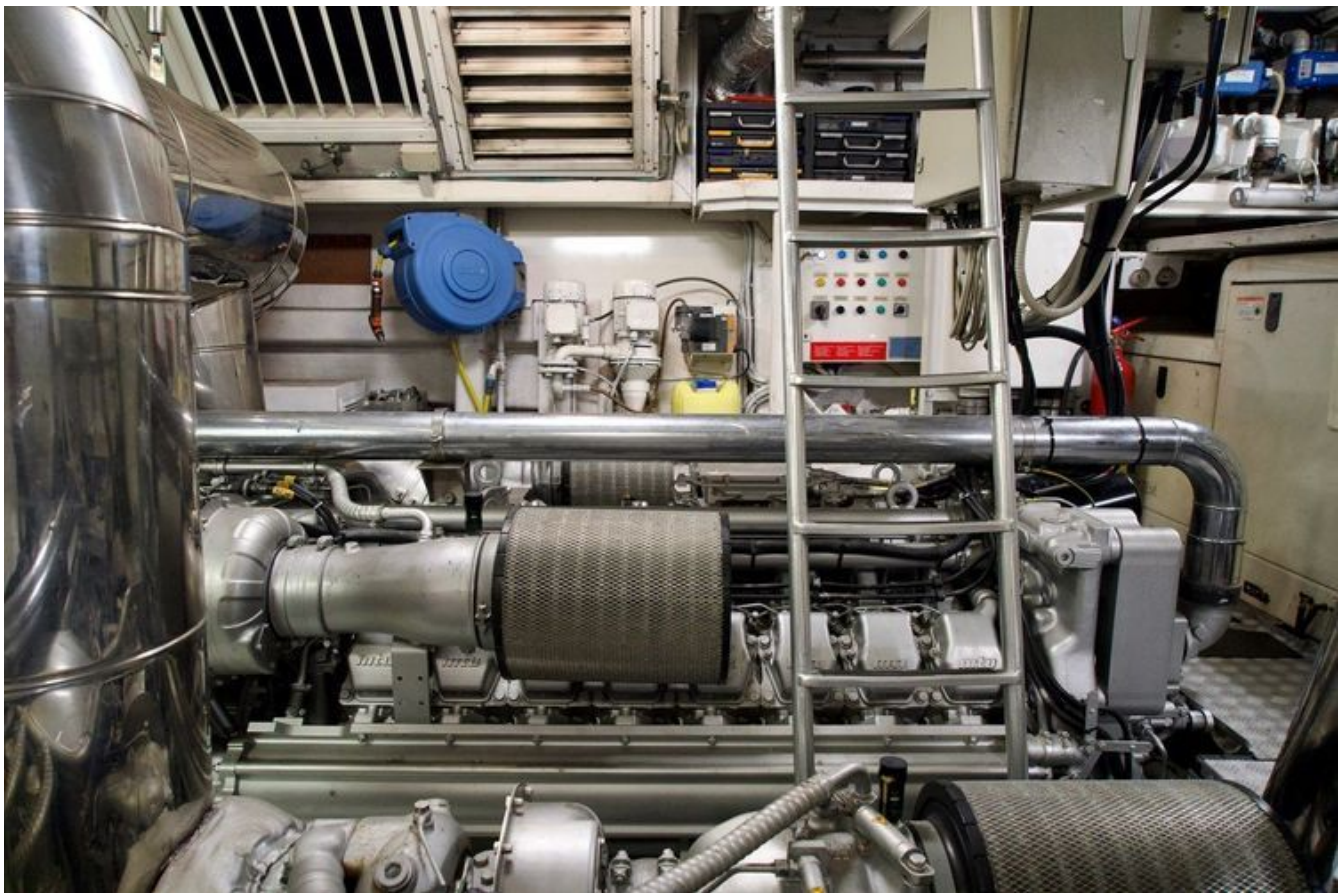
**Fuel Type:**

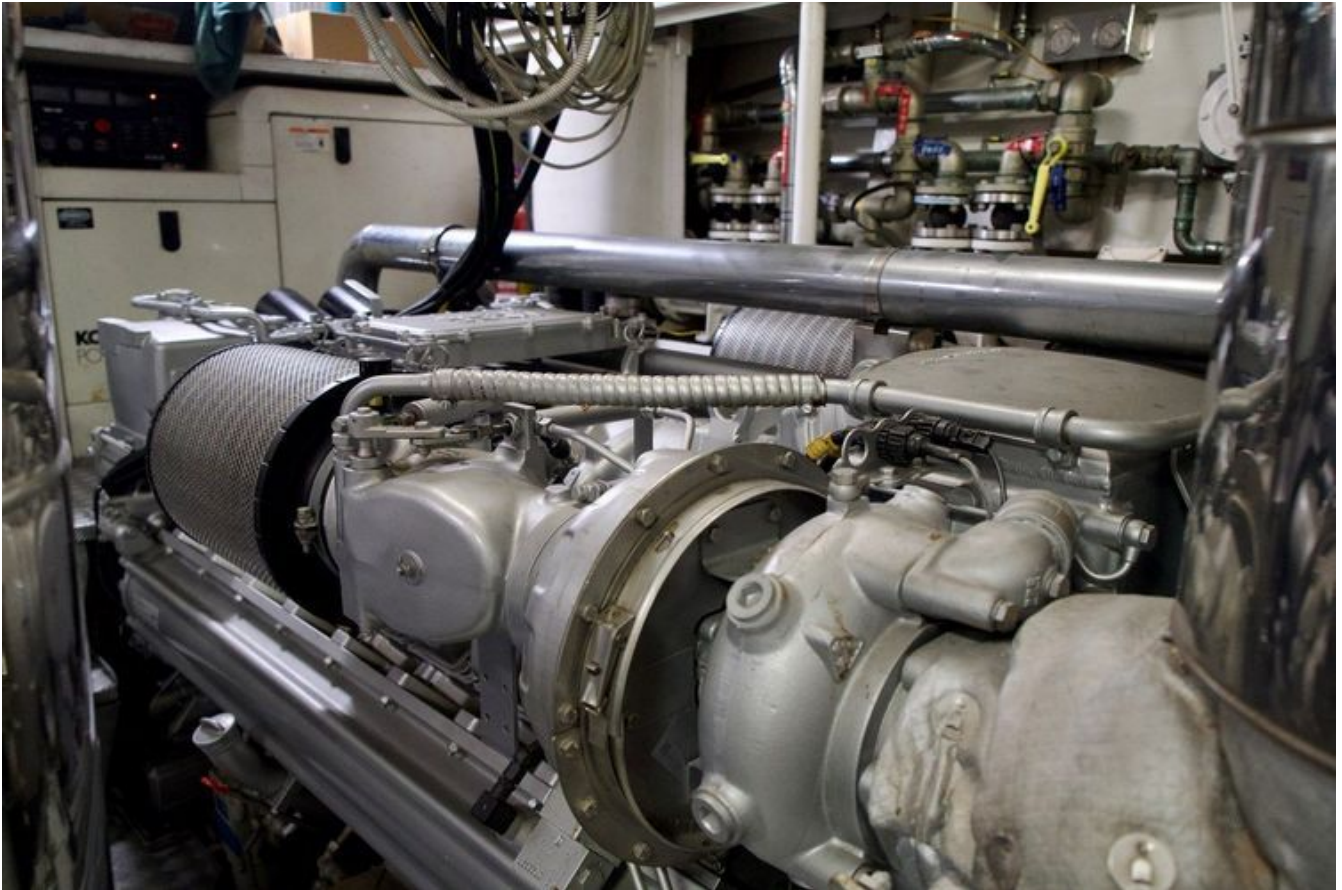
Diesel

# GALLERY











# CONTACTS

---

Shestakov Yacht Sales is a brokerage company specializing in the sale and service of yachts worldwide. The company offers services for buying and selling both new and used motor yachts, sailing vessels, and luxury superyachts. They also provide yacht registration, insurance, technical maintenance, crew selection, and charter organization services across the U.S., Canada, Latin America, the Caribbean, and the Bahamas.

The founder and lead broker of the company is Andrey Shestakov, a licensed and certified expert with extensive experience in marine engineering and shipbuilding.

The company has an extensive network of partnerships with major yacht manufacturers worldwide and provides services in multiple languages, including Russian, Ukrainian, Spanish, and English. The office is in Dania Beach, Florida, USA.

For more information and to view available yachts, you can visit the company's official website: <https://shestakovyachtsales.com>

## Contact details

---

**Phone:** +1(954)274-4435

**Email:** [andrey@shestakovyachtsales.com](mailto:andrey@shestakovyachtsales.com)

## Address

---



1380 Weeping Willow Way, Hollywood,  
Florida 33019