



SHESTAKOV

Yacht Sales

72 GLX - ASTONDOA



Builder:

Astondoa

Model:

72 GLX

LOA:

72' 0" (21.95 m)

Beam:

18' 0" (5.69 m)

Max Draft:

14' 9" (4.50 m)

Cruise Speed:

20 kn / 23.02 mph

Max Speed:

26 kn / 29.92 mph

Water Capacity:

400 Gallons

Fuel Capacity:

1162 Gallons

Total Heads:

4

Crew Cabin:

1

Hull Material:

Fiberglass and Plastic Yachts

If you would like to buy a yacht **72 GLX - Astondoa** or would like help, please call +1(954)274-4435 or visit shestakovyachtsales.com

TABLE OF CONTENTS

OVERVIEW	3
Selecting a 72 GLX	3
Features of the Model	3
Technical Specifications	4
Pricing and Ordering	4
Questions and Answers	4
Owner Experience Review	5
Pros and Cons	6
Comparison with Other Models	7
SPECIFICATIONS	8
GALLERY	9
CONTACTS	14

OVERVIEW

The 72 GLX from Astondoa is a sophisticated motor yacht within the broader motor yachts category. She is built on a Deep Vee hull fashioned from fiberglass and plastic and is represented by Andrey Shestakov of Shestakov Yacht Sales.

Selecting a 72 GLX

Opt for the 72 GLX when a harmonious blend of performance and onboard comfort matters. Powered by twin MAN inboard diesel units, she cruises efficiently at 20 knots (23.02 mph) and can reach a top end of 26 knots (29.92 mph). Her considerable tankage—1,162 gallons of fuel and 400 gallons of fresh water—supports extended passages, and the layout includes four heads plus a crew cabin for practical operation. For bespoke advice on equipment, layout choices, or current market availability, contact Andrey Shestakov at Shestakov Yacht Sales.

Features of the Model

- Performance profile: 20-knot cruise and 26-knot maximum speed
- Propulsion: 2 x MAN inboard diesel engines
- Hull and ride: Deep Vee with a fiberglass and plastic hull
- Deck material: Fiberglass
- Capacities: 1,162 gal fuel; 400 gal fresh water
- Accommodations detail: 4 heads; 1 crew cabin
- Classification: a motor yacht positioned within the motor yachts segment

Technical Specifications

- Length overall (LOA): 72 ft (21.95 m)
- Beam: 18 ft (5.69 m)
- Draft (max): 14.764 ft (4.5 m)
- Hull configuration: Deep Vee
- Hull category: fiberglass and plastic
- Deck material: Fiberglass
- Engines: 2 x MAN, Inboard, Diesel
- Cruise speed: 20 kn (23.02 mph)
- Maximum speed: 26 kn (29.92 mph)
- Heads: 4
- Crew cabins: 1
- Fuel capacity: 1,162 gal
- Water capacity: 400 gal

Pricing and Ordering

For up-to-date pricing, availability, and brokerage assistance on the 72 GLX from Astondoa, please get in touch with Andrey Shestakov at Shestakov Yacht Sales. Our brokerage team will assist with detailed specifications, arranging viewings, and managing purchase paperwork.

Questions and Answers

Q: What type of yacht is the 72 GLX? A: It is a motor yacht within the broader class of motor yachts, constructed on a Deep Vee platform with a fiberglass and plastic hull to deliver confident seakeeping. Key focus: **classification** and **hull** .

Q: What engines power the yacht and how fast does it go? A: The 72 GLX is driven by 2 x MAN **inboard diesel** engines. Anticipate a **cruise speed** of 20 knots (23.02 mph) and a **top speed** of 26 knots (29.92 mph).

Q: What are the dimensions and draft? A: LOA is **72 ft (21.95 m)** , beam is **18 ft (5.69 m)** , and **draft (max)** is **14.764 ft (4.5 m)** .

Q: What onboard facilities are specified? A: The model provides **4 heads** and **1 crew cabin** , together with generous **capacities** of 1,162 gallons of fuel and 400 gallons of fresh water.

Q: How do I order or buy through Shestakov Yacht Sales? A: Contact Andrey Shestakov at Shestakov Yacht Sales for guidance on **ordering** , viewings, and the brokerage process for the 72 GLX by Astondoa.

Owner Experience Review

Owners, captains, and brokers frequently choose the 72 GLX from Astondoa for family voyages and convivial day trips. The standard layout typically delivers four cabins plus crew—comprising a full-beam master, a VIP stateroom, and two twin cabins—comfortably accommodating eight overnight guests. The saloon is generously proportioned, the flybridge expansive, and the cockpit provides ample space for weekend entertaining; several sales listings note charter operations in locales such as Ibiza and Marbella, with day capacities reported up to 12 guests. Main-deck headroom is commonly quoted at around 6'10", and professional reviews highlight a capacious forward galley with large refrigeration as a notable interior advantage.

On the water, reviewers have remarked on the yacht's unexpected nimbleness and quick response, describing how she skimmed cleanly over her own wake during sea trials. Recorded performance data indicate a comfortable cruise in the low-20s knots—approximately 20.8 knots at 2000 rpm with a two-way

average of 25.4 knots—and owners and brokers report assured handling and ample thrust, particularly when outfitted with MAN V12 powerplants.

Maintenance and serviceability are generally rated positively: the machinery space offers roughly 6'3" of headroom and benefits from effective blower ventilation, easing access for routine work. Typical refit and upkeep items seen on listings include electronics modernization, bottom paint and Prospeed application, generator servicing, and scheduled MAN engine maintenance—sometimes described in listings as requiring an “open checkbook.” The most consistent criticism centers on the foredeck: forum posts range from “The worst foredeck ever designed!” to “Someone takes whoever designed that thing out on deck and make them walk the plank,” and owners caution that minimal bow rails or the lack of a rub rail on certain boats can result in gelcoat abrasion and increased maintenance demands.

Pros and Cons

- Four-cabin plus crew layout with a full-beam master supports family cruising and eight guests overnight.
- Excellent main-deck headroom (~6'10") and a voluminous forward galley with large refrigeration enhance liveability.
- Surprising agility and responsive handling, with a comfortable low-20-knot cruise and strong power on MAN V12 options.
- Foredeck layout has been criticized by forum owners for safety and practicality.
- Minimal bow rails or no rub rail on some boats can cause gelcoat rubbing and extra repair work.
- Routine refits and scheduled services are commonly reported (electronics, bottom paint/prospeed, generator work, MAN engine maintenance).

Comparison with Other Models

Model	LOA	Beam	Draft	Speed (Cruising/...	Gross...
72 GLX	72' 0" (21.95 m)	18' 0" (5.69 m)	14' 9" (4.50 m)	20 kn / 26 kn	
66 Flybridge	67' 0" (20.55 m)	17' 0" (5.28 m)	14' 9" (4.50 m) – 16' 5" (5 m)	23 kn / 30 kn	
82 GLX	78' 0" (24 m)	20' 0" (6.20 m)		18 kn / 28 kn	95
100 Century	100' 0" (30.48 m)	22' 0" (6.88 m)	19' 5" (5.92 m)	22 kn / 26 kn	
82	87' 0" (26.54 m)	20' 0" (6.18 m)	5' 11" (1.80 m)		
66 Fly	66' 0" (20.22 m)	17' 0" (5.28 m)	15' 4" (4.67 m)	28 kn / 32 kn	
AS5	57' 0" (17.58 m)	16' 0" (4.93 m)	14' 9" (4.50 m)		
Topdeck 63	63' 0" (19.20 m)	18' 0" (5.49 m)	18' 1" (5.50 m)	20 kn / 27 kn	
110 Century	109' 0" (33.50 m)	23' 0" (7.09 m)	19' 5" (5.92 m)	18 kn / 21 kn	
677 Coupe	67' 0" (20.42 m)	16' 0" (5.03 m)	10' 8" (3.25 m)	25 kn / 34 kn	

SPECIFICATIONS

LOA:

72' 0" (21.95 m)

Max Draft:

14' 9" (4.50 m)

Cruise Speed:

20 kn / 23.02 mph

Water Capacity:

400 Gallons

Total Heads:

4

Hull Material:

Fiberglass and Plastic Yachts

Hull Configuration:

Deep Vee

Engines:

2

Engine Type:

Inboard

Beam:

18' 0" (5.69 m)

Max Speed:

26 kn / 29.92 mph

Fuel Capacity:

1162 Gallons

Crew Cabin:

1

Deck Material:

Fiberglass

Manufacturer:

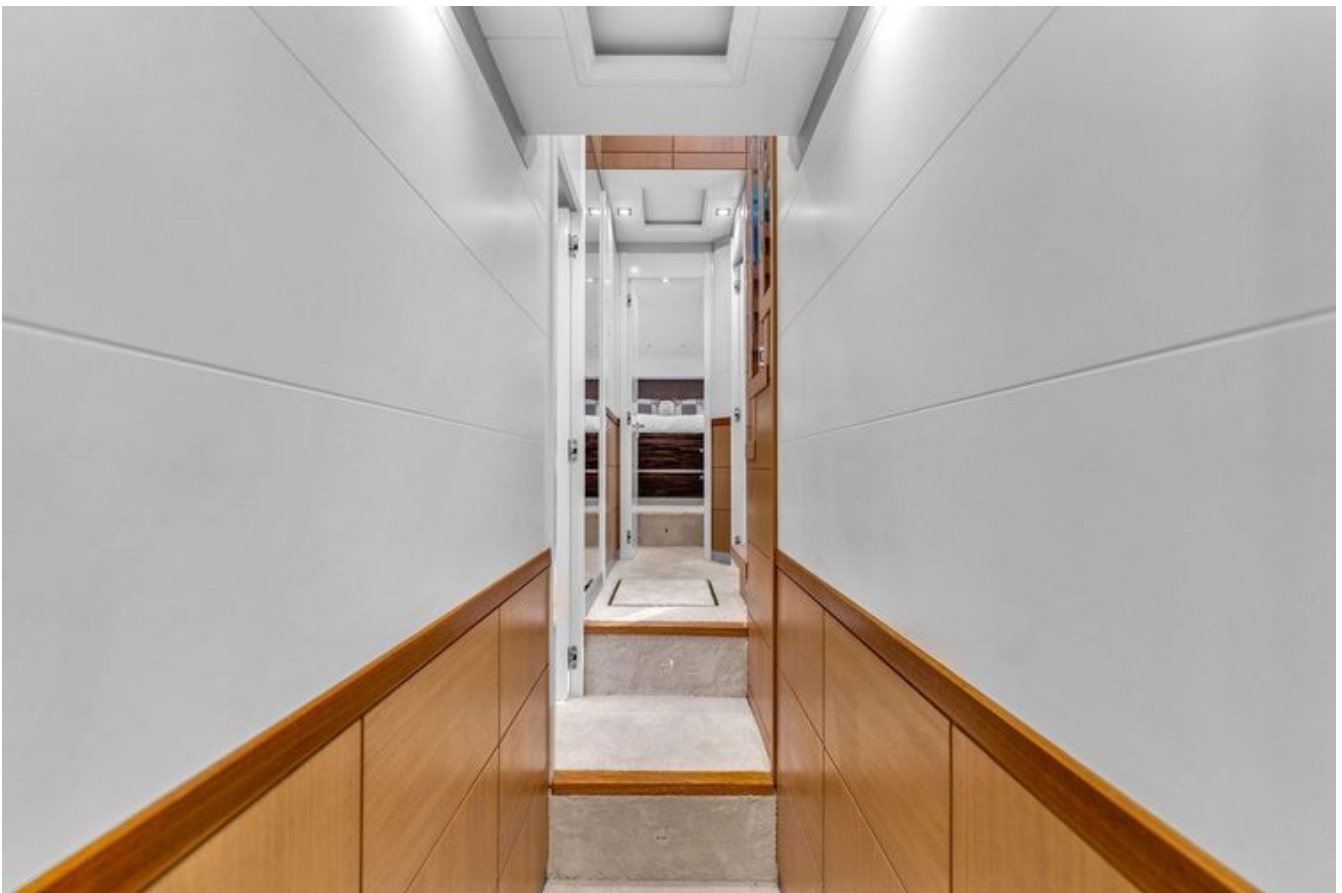
MAN

Fuel Type:

Diesel

GALLERY











CONTACTS

Shestakov Yacht Sales is a brokerage company specializing in the sale and service of yachts worldwide. The company offers services for buying and selling both new and used motor yachts, sailing vessels, and luxury superyachts. They also provide yacht registration, insurance, technical maintenance, crew selection, and charter organization services across the U.S., Canada, Latin America, the Caribbean, and the Bahamas.

The founder and lead broker of the company is Andrey Shestakov, a licensed and certified expert with extensive experience in marine engineering and shipbuilding.

The company has an extensive network of partnerships with major yacht manufacturers worldwide and provides services in multiple languages, including Russian, Ukrainian, Spanish, and English. The office is in Dania Beach, Florida, USA.

For more information and to view available yachts, you can visit the company's official website: <https://shestakovyachtsales.com>

Contact details

Phone: +1(954)274-4435

Email: andrey@shestakovyachtsales.com

Address



1380 Weeping Willow Way, Hollywood,
Florida 33019