



SHESTAKOV

Yacht Sales

## 80 FLYBRIDGE - ASTONDOA



**Builder:**

Astondoa

**Model:**

80 Flybridge

**LOA:**

80' 0" (24.38 m)

**Beam:**

19' 0" (5.99 m)

**Max Draft:**

17' 9" (5.42 m)

**Cruise Speed:**

36 kn / 41.43 mph

**Max Speed:**

32 kn / 36.83 mph

**Water Capacity:**

242 Gallons

**Fuel Capacity:**

1385.8 Gallons

**Total Heads:**

4

**Hull Material:**

Fiberglass and Plastic Yachts

**Deck Material:**

Fiberglass

If you would like to buy a yacht **80 FLYBRIDGE - Astondoa** or would like help, please call +1(954)274-4435 or visit [shestakovyachtsales.com](http://shestakovyachtsales.com)

---

# TABLE OF CONTENTS

---

<b>OVERVIEW .....</b>	<b>3</b>
<b>Selecting a 80 Flybridge .....</b>	<b>3</b>
<b>Features of the Model .....</b>	<b>3</b>
<b>Technical Specifications .....</b>	<b>4</b>
<b>Pricing and Ordering .....</b>	<b>4</b>
<b>Questions and Answers .....</b>	<b>4</b>
<b>Owner Experience Review .....</b>	<b>5</b>
<b>Pros and Cons .....</b>	<b>6</b>
<b>Comparison with Other Models .....</b>	<b>7</b>
<b>SPECIFICATIONS .....</b>	<b>8</b>
<b>GALLERY .....</b>	<b>9</b>
<b>CONTACTS .....</b>	<b>14</b>

## OVERVIEW

---

The 80 Flybridge from Astondoa is a motor yacht constructed with a fiberglass and plastic hull and driven by twin MAN inboard diesel engines. Offered through Shestakov Yacht Sales with broker Andrey Shestakov, this design merges substantial onboard volume with the performance and capacities outlined below.

### Selecting a 80 Flybridge

---

Deciding on the right yacht starts with matching expected performance and dimensional requirements. The 80 Flybridge measures 80 ft (24.38 m) LOA, carries a 19 ft (5.99 m) beam, and has a published maximum draft of 17.771 ft (5.4166 m). Propulsion is provided by a pair of MAN inboard diesel engines, with published figures listing a cruising speed of 36 kn (41.43 mph) and a maximum speed of 32 kn (36.83 mph). As a motor yacht built on a fiberglass and plastic hull and featuring a fiberglass deck, it suits buyers focused on this construction type and performance band. Contact Shestakov Yacht Sales and broker Andrey Shestakov to confirm how these specifications meet your intended cruising profile.

### Features of the Model

---

- Builder pedigree: Astondoa
- Model: 80 Flybridge
- Classification: motor yacht
- Construction: fiberglass and plastic hull with fiberglass deck
- Propulsion: Twin MAN inboard diesel engines (2)
- Published performance: 36 kn cruise / 32 kn max
- Onboard amenities include 4 heads

- Fuel and water capacities fit extended outings within the listed ranges

## Technical Specifications

---

- Length overall (LOA): 80 ft (24.38 m)
- Beam: 19 ft (5.99 m)
- Draft (max): 17.771 ft (5.4166 m)
- Engines: 2 x MAN, Inboard, Diesel
- Cruising speed: 36 kn (41.43 mph)
- Maximum speed: 32 kn (36.83 mph)
- Fuel capacity: 1,385.8 gal
- Water capacity: 242 gal
- Heads: 4
- Hull: fiberglass and plastic
- Deck material: Fiberglass

## Pricing and Ordering

---

For up to date pricing, availability, and purchasing guidance on the 80 Flybridge from Astondoa, please contact Shestakov Yacht Sales. Broker Andrey Shestakov can advise on current specifications, delivery timelines, and the documentation process to help facilitate your purchase.

## Questions and Answers

---

Q: What sort of vessel is the 80 Flybridge? A: This is a motor yacht produced by Astondoa featuring a fiberglass and plastic hull. Its key attributes include twin MAN inboard diesel engines and a fiberglass deck. The configuration is geared toward owners who prioritize **motor-yacht** performance and a **composite** construction.

Q: What are the published speeds for the model? A: The stated **cruising speed** is 36 kn (41.43 mph) and the stated **maximum speed** is 32 kn (36.83 mph), as listed for the 80 Flybridge.

Q: What are the key dimensions and draft? A: The yacht's **LOA** is 80 ft (24.38 m), the **beam** measures 19 ft (5.99 m), and the **max draft** is 17.771 ft (5.4166 m). These numbers define the physical footprint of the 80 Flybridge.

Q: What capacities and accommodations are specified? A: Specifications list a **fuel capacity** of 1,385.8 gal, a **water capacity** of 242 gal, and **4 heads** . These figures help with planning range and onboard provisioning.

Q: How can I purchase through Shestakov Yacht Sales? A: Contact Shestakov Yacht Sales directly. Broker **Andrey Shestakov** will support the **ordering process** , required paperwork, and ensure the 80 Flybridge by Astondoa is specified to meet your needs.

## Owner Experience Review

---

Owners often select the 80 Flybridge from Astondoa for multi generational family cruising, short island escapes, and convivial entertaining at anchor. The variable deadrise planing hull is generally noted for delivering a composed ride in ordinary sea states, with handling that tends to keep guests comfortable. Many operators cruise practically in the 25–30 knot range and report an operational range around 400–450 nm, making it well suited to Bimini style hops and similar passages, while the expansive flybridge and cockpit facilitate socializing and hosting.

The interior commonly features a full beam amidships master complemented by four en suite guest cabins, and the builder's semi custom philosophy allows owners to choose between galley up or galley down arrangements and to configure living areas. The flybridge is typically laid out for multi level

entertaining with options for a bar, sunpads, and a wet bar; owners frequently customize seating and AV layouts to reflect their personal tastes. A number of buyers find the factory finish overly Spanish in style and elect to refit upholstery or trim shortly after delivery.

Routine maintenance is simplified by a roomy engine room with good walkways, forward facing service points, and notably wide engine spacing, which owners and captains say improves accessibility. Overall build quality is considered solid, though not at the very highest echelon of European yards; inconsistencies behind panels can appear, and older hulls are often refreshed or refitted. Experienced purchasers routinely factor ongoing finish work and periodic upgrade cycles into their ownership budgets.

## Pros and Cons

---

- Predictable handling and a steady, comfortable ride from the variable deadrise planing hull.
- Highly customizable layout with a common full beam master and four en suite cabins.
- Spacious flybridge and hydraulic tender platform suit entertaining, toys, and island hopping.
- Factory décor can feel “too Spanish” to some owners, prompting upholstery or finish changes.
- Build quality is good but below top tier European benchmarks, with variability behind panels.
- Older examples often benefit from refits and upgrades, so buyers should budget for periodic refresh work.

## Comparison with Other Models

Model	LOA	Beam	Draft	Speed (Cruising/...	Gross...
80 Flybridge	80' 0" (24.38 m)	19' 0" (5.99 m)	17' 9" (5.42 m)	36 kn / 32 kn	
66 Flybridge	67' 0" (20.55 m)	17' 0" (5.28 m)	14' 9" (4.50 m) – 16' 5" (5 m)	23 kn / 30 kn	
82 GLX	78' 0" (24 m)	20' 0" (6.20 m)		18 kn / 28 kn	95
100 Century	100' 0" (30.48 m)	22' 0" (6.88 m)	19' 5" (5.92 m)	22 kn / 26 kn	
82	87' 0" (26.54 m)	20' 0" (6.18 m)	5' 11" (1.80 m)		
66 Fly	66' 0" (20.22 m)	17' 0" (5.28 m)	15' 4" (4.67 m)	28 kn / 32 kn	
AS5	57' 0" (17.58 m)	16' 0" (4.93 m)	14' 9" (4.50 m)		
Topdeck 63	63' 0" (19.20 m)	18' 0" (5.49 m)	18' 1" (5.50 m)	20 kn / 27 kn	
110 Century	109' 0" (33.50 m)	23' 0" (7.09 m)	19' 5" (5.92 m)	18 kn / 21 kn	
677 Coupe	67' 0" (20.42 m)	16' 0" (5.03 m)	10' 8" (3.25 m)	25 kn / 34 kn	

# SPECIFICATIONS

---

**LOA:**

80' 0" (24.38 m)

**Max Draft:**

17' 9" (5.42 m)

**Cruise Speed:**

36 kn / 41.43 mph

**Water Capacity:**

242 Gallons

**Total Heads:**

4

**Hull Material:**

Fiberglass and Plastic Yachts

**Engines:**

2

**Engine Type:**

Inboard

**Beam:**

19' 0" (5.99 m)

**Max Speed:**

32 kn / 36.83 mph

**Fuel Capacity:**

1385.8 Gallons

**Deck Material:**

Fiberglass

**Manufacturer:**

MAN

**Fuel Type:**

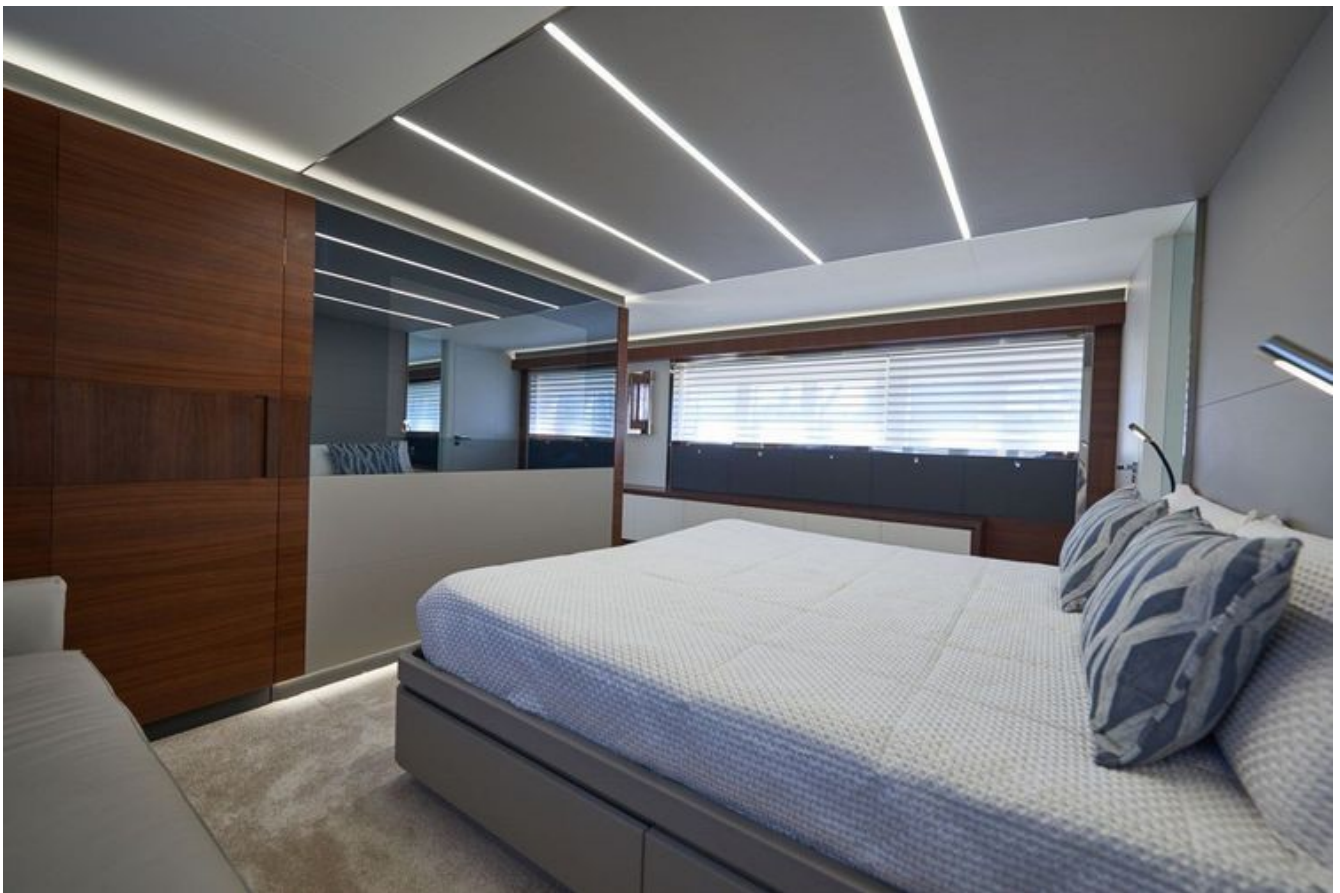
Diesel

# GALLERY











# CONTACTS

---

Shestakov Yacht Sales is a brokerage company specializing in the sale and service of yachts worldwide. The company offers services for buying and selling both new and used motor yachts, sailing vessels, and luxury superyachts. They also provide yacht registration, insurance, technical maintenance, crew selection, and charter organization services across the U.S., Canada, Latin America, the Caribbean, and the Bahamas.

The founder and lead broker of the company is Andrey Shestakov, a licensed and certified expert with extensive experience in marine engineering and shipbuilding.

The company has an extensive network of partnerships with major yacht manufacturers worldwide and provides services in multiple languages, including Russian, Ukrainian, Spanish, and English. The office is in Dania Beach, Florida, USA.

For more information and to view available yachts, you can visit the company's official website: <https://shestakovyachtsales.com>

## Contact details

---

**Phone:** +1(954)274-4435

**Email:** [andrey@shestakovyachtsales.com](mailto:andrey@shestakovyachtsales.com)

## Address

---



1380 Weeping Willow Way, Hollywood,  
Florida 33019