



SHESTAKOV

Yacht Sales

32M GRANDE - AZIMUT YACHTS



Builder:

Azimut Yachts

Model:

32m Grande

LOA:

102' 0" (31.27 m)

Min Draft:

5' 5" (1.65 m)

Beam:

24' 0" (7.32 m)

Max Draft:

6' 0" (1.83 m)

Cruise Speed:

20 kn / 23.02 mph

Max Speed:

25 kn / 28.77 mph

Gross Tonnage:

228 Pounds

Water Capacity:

581.18 Gallons

Fuel Capacity:

4226.75 Gallons

Total Heads:

6

If you would like to buy a yacht **32M GRANDE - Azimut Yachts** or would like help, please call +1(954)274-4435 or visit shestakovyachtsales.com

TABLE OF CONTENTS

OVERVIEW 3

- Selecting a 32m Grande 3
- Features of the Model 3
- Technical Specifications 4
- Pricing and Ordering 4
- Questions and Answers 5
- Owner Experience Review 5
- Pros and Cons 6
- Comparison with Other Models 7

SPECIFICATIONS 8

GALLERY 9

CONTACTS 14

OVERVIEW

The 32m Grande from Azimut Yachts is a 102 ft motor yacht built on a monohull platform with a fiberglass and plastic hull and a GRP deck. Propulsion is provided by twin CAT engines delivering a 20-knot cruising pace and a 25-knot top end. Accommodation is configured for 10 guests supported by a professional crew of 3. For purchase assistance, contact broker Andrey Shestakov and the Shestakov Yacht Sales team.

Selecting a 32m Grande

Opt for the 32m Grande when you prioritize sustained passages at a **20 kn cruising speed** (approximately 23.02 mph) and a **25 kn maximum speed** (approximately 28.77 mph), desire substantial onboard volume at 228 GT, and need a flexible arrangement for up to 10 guests plus 3 crew. Constructed as a monohull with a fiberglass and plastic hull and a GRP deck, it is well suited to owners who require a shallow draft (about 5.413–6.004 ft / 1.65–1.83 m) for varied cruising areas. Within our cataloguing it is also listed under commercial fishing vessel for specific operational classifications and search purposes.

Features of the Model

- Interior by Achille Salvagni (Azimut Style Office)
- LOA 102 ft (31.27 m); beam 24 ft (7.32 m)
- Draft range 5.413–6.004 ft (1.65–1.83 m)
- Performance: 20 kn cruise (approx 23.02 mph), 25 kn max (approx 28.77 mph)
- Accommodation for 10 guests; 6 heads
- Crew: 3 in 3 cabins
- Construction: Monohull; fiberglass and plastic hull; GRP deck

- Power: 2 CAT engines
- Gross tonnage: 228 GT
- Capacities: fuel 4,226.75 gal; fresh water 581.18 gal

Technical Specifications

- Model: 32m Grande
- Builder: Azimut Yachts
- Type: motor yacht; hull: fiberglass and plastic hull; configuration: Monohull; deck: GRP
- LOA: 102 ft (31.27 m)
- Beam: 24 ft (7.32 m)
- Draft: 5.413–6.004 ft (1.65–1.83 m)
- Cruising speed: 20 kn (23.02 mph)
- Maximum speed: 25 kn (28.77 mph)
- Engines: 2 x CAT
- Gross tonnage: 228 GT
- Accommodation: 10; Heads: 6
- Crew: 3 cabins / 3 beds
- Fuel capacity: 4,226.75 gal
- Fresh water capacity: 581.18 gal

Pricing and Ordering

To obtain current pricing, confirm availability, or arrange viewings for the 32m Grande, please reach out to Andrey Shestakov at Shestakov Yacht Sales. Our brokerage will walk you through the detailed specifications supplied by Azimut Yachts and assist with inspections, sea trials, and the purchase process.

Questions and Answers

Q: What are the principal dimensions of the 32m Grande? A: The yacht's **LOA** measures 102 ft (31.27 m), the **beam** is 24 ft (7.32 m), and the **draft** varies between 5.413 ft (1.65 m) and 6.004 ft (1.83 m).

Q: How fast does it go? A: The vessel's **cruising speed** is 20 kn (about 23.02 mph), while the **maximum speed** reaches 25 kn (about 28.77 mph).

Q: How many people can stay on board? A: The layout supports up to **10 guests** , with **6 heads** . Crew accommodation consists of **3 cabins** for **3 crew** .

Q: What is the hull and deck construction? A: The yacht is a **monohull** constructed with a fiberglass and plastic hull, complemented by a **GRP deck** .

Q: What powers the yacht? A: Propulsion is provided by **2 CAT engines** . For complete advice on the 32m Grande from Azimut Yachts, contact Andrey Shestakov at Shestakov Yacht Sales.

Owner Experience Review

Owners are drawn to the 32m Grande by Azimut Yachts for its adaptability: five guest cabins easily accommodate family groups of around ten, and the internal arrangement works well for owner operator weekend use while remaining practical for extended cruising with a small professional crew. Many owners position the model for charter operations with 5–6 crew to deliver full service charters, aided by luminous, spacious interiors, a large owner's suite with full height glazing, and seamless guest circulation between the beach club, cockpit, and generous flybridge social areas.

On passage the D2P hull shifts from displacement to semi planing behavior, producing a comfortable and efficient ride. Feedback highlights an economical 12 knot regime enabling roughly 1,000 nm of range, a common cruise near 21

knots, and top speeds reported around 27 knots; multiple captains also commend the raised pilothouse for enhanced sightlines and straightforward control in a seaway.

From a maintenance and systems perspective, the commonly specified twin MTU 16V 2000 M86 installation is reached via crew access points and aft service hatches, a layout engineers generally find practical. The carbon tech superstructure reduces topside weight and can ease routine upkeep, though structural repairs demand specialist skills and can be expensive. Discussion on public forums records some delivery and warranty disagreements on select boats — including anecdotes like discovering loose fasteners after initial outings — and many brokers and owners advise engaging an owner's representative during construction and handover to limit post delivery corrective work.

Pros and Cons

- Flexible mission profile: family cruising for ~10 guests, owner operator weekends, or full charter with 5–6 crew.
- D2P hull delivers efficient range (~1,000 nm at ~12 kt) with a comfortable ride and a broad 21–27 kt performance envelope.
- Bright, voluminous interiors and big entertaining zones, including an ~18 m² beach club and expansive flybridge.
- Forum reports note delivery and warranty issues on some boats, with post delivery fixes such as chasing loose hardware.
- Carbon tech superstructure can lower routine upkeep but specialized repairs are costly and require expertise.
- Full service operations typically rely on a professional crew of 5–6, adding complexity and operating cost.

Comparison with Other Models

Model	LOA	Beam	Draft	Speed (Cruising/...	Gross...
32m Grande	102' 0" (31.27 m)	24' 0" (7.32 m)	5' 5" (1.65 m) – 6' 0" (1.83 m)	20 kn / 25 kn	228
S6	60' 0" (18.31 m)	15' 0" (4.75 m)	17' 3" (5.25 m)		
50 Flybridge	52' 0" (16.08 m)	15' 0" (4.63 m)	13' 6" (4.11 m)	24 kn / 32 kn	26
64 Flybridge	66' 0" (20.14 m)	16' 0" (5.06 m)	15' 7" (4.75 m)	28 kn / 34 kn	
Atlantis 43	45' 0" (13.74 m)	13' 0" (4.24 m)	11' 9" (3.58 m)	30 kn / 35 kn	
62E	65' 0" (19.84 m)	16' 0" (5.06 m)	16' 2" (4.92 m)	28 kn / 33 kn	
55S	56' 0" (17.35 m)	15' 0" (4.72 m)		22 kn / 36 kn	
Grande 105	105' 0" (32 m)	24' 0" (7.32 m)	21' 1" (6.42 m)	22 kn / 26 kn	
86S	86' 0" (26.49 m)	19' 0" (5.82 m)		40 kn	
68S	68' 0" (20.73 m)	16' 0" (5.08 m)			

SPECIFICATIONS

LOA:

102' 0" (31.27 m)

Beam:

24' 0" (7.32 m)

Cruise Speed:

20 kn / 23.02 mph

Gross Tonnage:

228 Pounds

Fuel Capacity:

4226.75 Gallons

Total Heads:

6

Crew Berths:

3

Hull Material:

Fiberglass and Plastic Yachts

Hull Configuration:

Monohull

Engines:

2

Min Draft:

5' 5" (1.65 m)

Max Draft:

6' 0" (1.83 m)

Max Speed:

25 kn / 28.77 mph

Water Capacity:

581.18 Gallons

Crew Cabin:

3

Deck Material:

GRP

Interior Designer:

Achille Salvagni (Azimut Style Office)

Manufacturer:

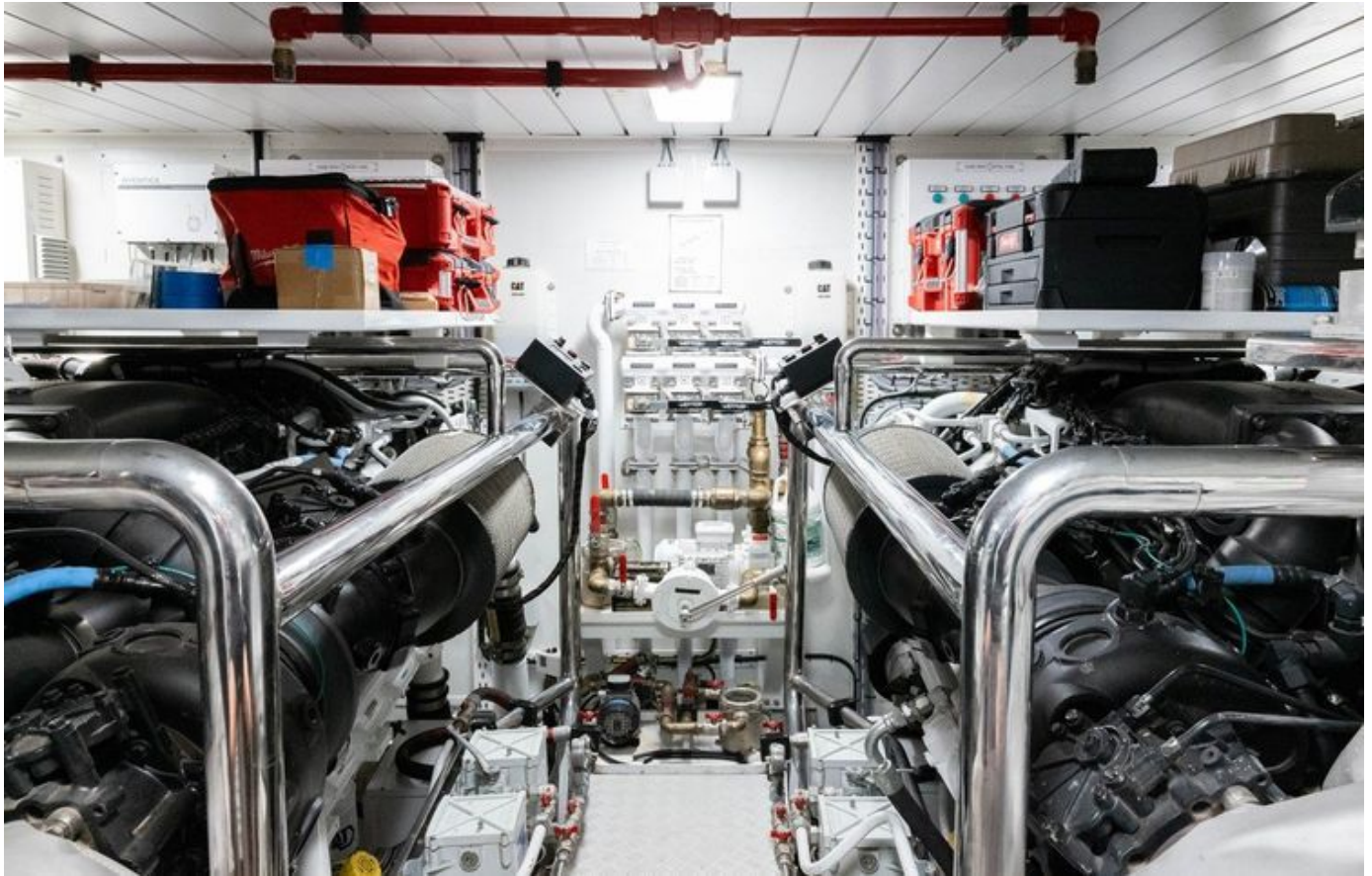
CAT

GALLERY











CONTACTS

Shestakov Yacht Sales is a brokerage company specializing in the sale and service of yachts worldwide. The company offers services for buying and selling both new and used motor yachts, sailing vessels, and luxury superyachts. They also provide yacht registration, insurance, technical maintenance, crew selection, and charter organization services across the U.S., Canada, Latin America, the Caribbean, and the Bahamas.

The founder and lead broker of the company is Andrey Shestakov, a licensed and certified expert with extensive experience in marine engineering and shipbuilding.

The company has an extensive network of partnerships with major yacht manufacturers worldwide and provides services in multiple languages, including Russian, Ukrainian, Spanish, and English. The office is in Dania Beach, Florida, USA.

For more information and to view available yachts, you can visit the company's official website: <https://shestakovyachtsales.com>

Contact details

Phone: +1(954)274-4435

Email: andrey@shestakovyachtsales.com

Address



1380 Weeping Willow Way, Hollywood,
Florida 33019