



SHESTAKOV

Yacht Sales

## 43 S - AZIMUT YACHTS



**Builder:**

Azimut Yachts

**Model:**

43 S

**LOA:**

43' 0" (13.34 m)

**Min Draft:**

11' 6" (3.50 m)

**Beam:**

13' 0" (4.19 m)

**Max Draft:**

13' 1" (4 m)

**Cruise Speed:**

25 kn / 28.77 mph

**Max Speed:**

33 kn / 37.98 mph

**Gross Tonnage:**

15.43 Pounds

**Water Capacity:**

132 Gallons

**Fuel Capacity:**

290 Gallons

**Sleeps:**

6

If you would like to buy a yacht **43 S - Azimut Yachts** or would like help, please call +1(954)274-4435 or visit [shestakovyachtsales.com](http://shestakovyachtsales.com)

---

# TABLE OF CONTENTS

---

<b>OVERVIEW .....</b>	<b>3</b>
<b>Selecting a 43 S .....</b>	<b>3</b>
<b>Features of the Model .....</b>	<b>3</b>
<b>Technical Specifications .....</b>	<b>4</b>
<b>Pricing and Ordering .....</b>	<b>4</b>
<b>Questions and Answers .....</b>	<b>5</b>
<b>Owner Experience Review .....</b>	<b>5</b>
<b>Pros and Cons .....</b>	<b>6</b>
<b>Comparison with Other Models .....</b>	<b>7</b>
<b>SPECIFICATIONS .....</b>	<b>8</b>
<b>GALLERY .....</b>	<b>9</b>
<b>CONTACTS .....</b>	<b>14</b>

## OVERVIEW

---

Crafted by Azimut Yachts, the 43 S is an elegant motor yacht in the wider motor yachts class, built on a fiberglass construction foundation with a Deep Vee hull and GRP deck. The hull lines come from Stefano Righini while interiors were conceived by Carlo Galeazzi, combining Italian aesthetics with purposeful performance. Shestakov Yacht Sales, represented by broker Andrey Shestakov, stands ready to assist with selection, surveys, and delivery arrangements.

## Selecting a 43 S

---

Opt for the 43 S if you desire assured cruising at 25 knots (28.77 mph) with the capacity to push to 33 knots (37.98 mph), along with genuine overnight comfort for guests. With sleeping space for up to 6, two heads, and a dedicated crew cabin for two, the layout is practical for family use. As a motor yacht within the broader motor yachts segment, it marries pedigree styling with day-to-day utility, powered by twin Volvo Penta diesels.

## Features of the Model

---

- Design pedigree: hull penned by Stefano Righini; interior styling by Carlo Galeazzi
- Performance profile: comfortable cruising at 25 kn (28.77 mph) with a top speed of 33 kn (37.98 mph)
- Propulsion: twin Volvo Penta diesel engines
- Construction: fiberglass construction hull with a GRP deck in a Deep Vee layout
- Dimensions: LOA 43 ft (13.34 m); Beam 13 ft (4.19 m)
- Draft: min 11.483 ft (3.5 m); max 13.123 ft (4 m)
- Capacity and comfort: accommodates 6 for sleeping; 2 heads; crew cabin 1

with 2 beds

- Tankage: fuel capacity 290 gal; fresh water 132 gal
- Gross tonnage: 15.43 GT

## Technical Specifications

---

- Builder: Azimut Yachts
- Model: 43 S
- Type: motor yacht within the motor yachts class
- Hull material: fiberglass construction
- Deck material: GRP
- Hull configuration: Deep Vee
- LOA: 43 ft (13.34 m)
- Beam: 13 ft (4.19 m)
- Draft (min/max): 11.483 ft (3.5 m) / 13.123 ft (4 m)
- Cruising speed: 25 kn (28.77 mph)
- Maximum speed: 33 kn (37.98 mph)
- Gross tonnage: 15.43
- Engines: 2 × Volvo Penta, Diesel
- Accommodation: sleeps 6; 2 heads
- Crew: 1 cabin; 2 beds
- Fuel capacity: 290 gal
- Water capacity: 132 gal
- Hull designer: Stefano Righini
- Interior designer: Carlo Galeazzi

## Pricing and Ordering

---

Market availability and pricing for the 43 S depend on region, specification, and the vessel's condition. For up-to-date listings, valuation insight, and to arrange

inspections or sea trials, reach out to Shestakov Yacht Sales. Broker Andrey Shestakov will manage inspections, paperwork, and delivery planning to suit your needs.

## Questions and Answers

---

Q: What type of yacht is the 43 S? A: It is a motor yacht that sits within the motor yachts class, manufactured by Azimut Yachts.

Q: What are the key performance figures? A: The 43 S achieves a **cruising speed** of 25 kn (28.77 mph) and a **maximum speed** of 33 kn (37.98 mph).

Q: How is the yacht constructed? A: The hull uses fiberglass construction with a **GRP** deck and a **Deep Vee** hull form; hull lines are by **Stefano Righini** and the interior by **Carlo Galeazzi** .

Q: What are the main dimensions? A: **LOA** 43 ft (13.34 m); **beam** 13 ft (4.19 m); **draft** 11.483–13.123 ft (3.5–4 m).

Q: What about accommodations and machinery? A: Capacity includes **6 sleeps** with **2 heads** , plus **1 crew cabin** with **2 beds** ; propulsion is provided by **2 Volvo Penta Diesel** engines. For full listings and customization options, contact Andrey Shestakov at Shestakov Yacht Sales.

## Owner Experience Review

---

Owners commonly deploy the 43 S from Azimut Yachts for family outings and weekend hospitality. The generous saloon, powered sunroof, and folding glass door create a seamless social environment. Many appreciate its suitability for owner-operated coastal cruising thanks to the Volvo Penta IPS configuration, and it is frequently used as a dayboat or short-stay charter because of the easy transition between cockpit and swim platform.

On sea trials, owners and reviewers described it as “a blast to drive,” noting agile behavior in tight spaces, precise helm feedback, and compact turning performance attributable to the IPS system. Some testing highlighted a midrange bow rise—approximately 6° near 2,500 rpm—which can narrow forward visibility until Bennett trim tabs are engaged.

Internally, feedback praises the bright, airy feel—the distinctive shark fin side windows and the retractable electric roof enlarge the cabin experience.

Compromises exist: the galley’s stainless accented finish is attractive but offers limited storage for extended passages, and the lower deck cabins are comfortable for couples and families but are relatively modest compared with larger yachts. Owners have reported minor issues such as a sliding patio door requiring a latch repair, and long term maintenance notes often cite IPS clutch pack servicing, prop shaft seal work, and restricted engine room access (small hatches, low headroom, and a tricky aft ladder), all important considerations for prospective buyers.

## Pros and Cons

---

- Open, social layout with a roomy saloon, electric sunroof, and folding glass door ideal for family weekends and entertaining.
- IPS propulsion provides outstanding close quarters handling with responsive steering and tight turning ability.
- Bright interior with large side windows and a retractable roof improves comfort both underway and at anchor.
- Midrange bow rise can impair forward sightlines until Bennett trim tabs are used.
- Reported IPS clutch pack and prop shaft seal maintenance can add expense in later seasons.
- Engine room access is limited by small hatches, low headroom, and an awkward aft ladder.

## Comparison with Other Models

Model	LOA	Beam	Draft	Speed (Cruising/...	Gross...
43 S	43' 0" (13.34 m)	13' 0" (4.19 m)	11' 6" (3.50 m) – 13' 1" (4 m)	25 kn / 33 kn	15.43
S6	60' 0" (18.31 m)	15' 0" (4.75 m)	17' 3" (5.25 m)		
50 Flybridge	52' 0" (16.08 m)	15' 0" (4.63 m)	13' 6" (4.11 m)	24 kn / 32 kn	26
64 Flybridge	66' 0" (20.14 m)	16' 0" (5.06 m)	15' 7" (4.75 m)	28 kn / 34 kn	
Atlantis 43	45' 0" (13.74 m)	13' 0" (4.24 m)	11' 9" (3.58 m)	30 kn / 35 kn	
62E	65' 0" (19.84 m)	16' 0" (5.06 m)	16' 2" (4.92 m)	28 kn / 33 kn	
55S	56' 0" (17.35 m)	15' 0" (4.72 m)		22 kn / 36 kn	
Grande 105	105' 0" (32 m)	24' 0" (7.32 m)	21' 1" (6.42 m)	22 kn / 26 kn	
86S	86' 0" (26.49 m)	19' 0" (5.82 m)		40 kn	
68S	68' 0" (20.73 m)	16' 0" (5.08 m)			

# SPECIFICATIONS

**LOA:**

43' 0" (13.34 m)

**Beam:**

13' 0" (4.19 m)

**Cruise Speed:**

25 kn / 28.77 mph

**Gross Tonnage:**

15.43 Pounds

**Fuel Capacity:**

290 Gallons

**Sleeps:**

6

**Crew Cabin:**

1

**Hull Material:**

Fiberglass and Plastic Yachts

**Hull Configuration:**

Deep Vee

**Interior Designer:**

Carlo Galeazzi

**Engines:**

2

**Fuel Type:**

Diesel

**Min Draft:**

11' 6" (3.50 m)

**Max Draft:**

13' 1" (4 m)

**Max Speed:**

33 kn / 37.98 mph

**Water Capacity:**

132 Gallons

**Total Heads:**

2

**Crew Berths:**

2

**Deck Material:**

GRP

**Hull Designer:**

Stefano Righini

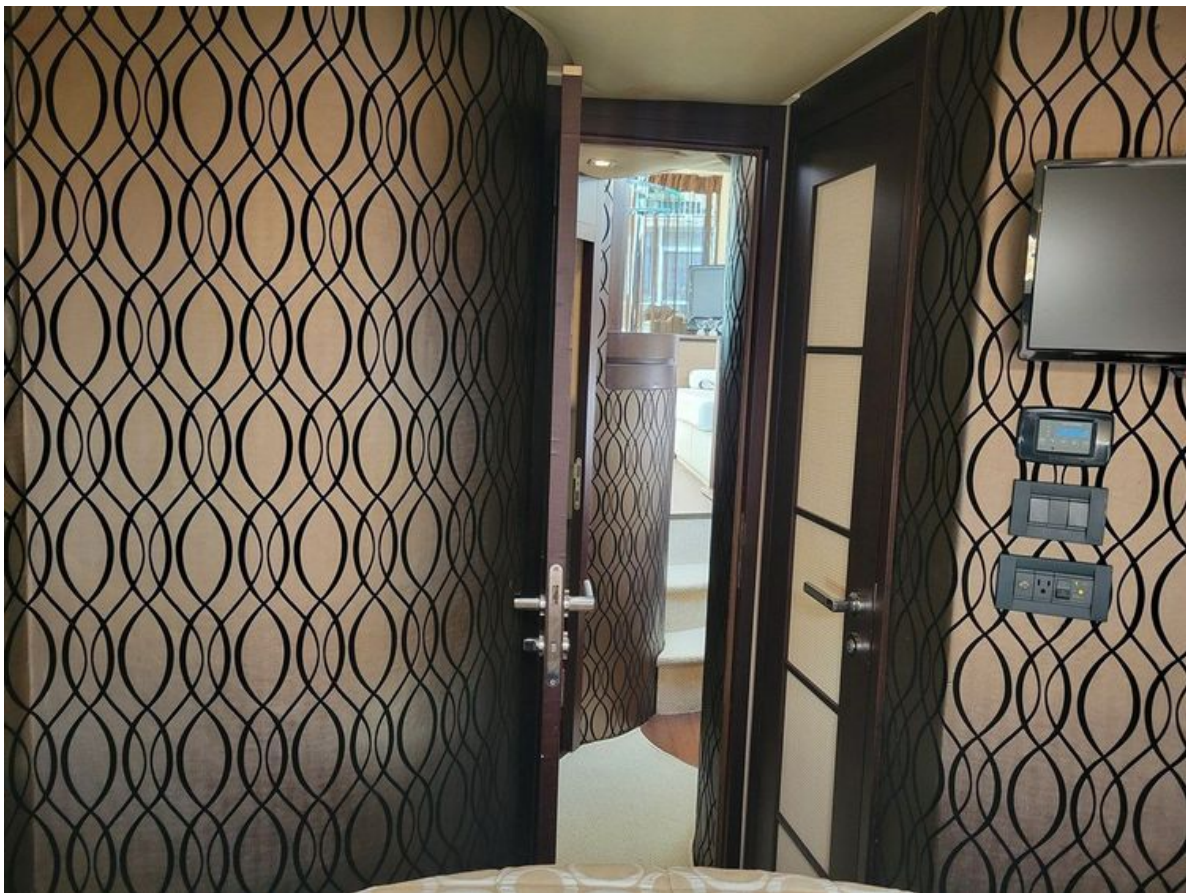
**Manufacturer:**

Volvo Penta

# GALLERY











# CONTACTS

---

Shestakov Yacht Sales is a brokerage company specializing in the sale and service of yachts worldwide. The company offers services for buying and selling both new and used motor yachts, sailing vessels, and luxury superyachts. They also provide yacht registration, insurance, technical maintenance, crew selection, and charter organization services across the U.S., Canada, Latin America, the Caribbean, and the Bahamas.

The founder and lead broker of the company is Andrey Shestakov, a licensed and certified expert with extensive experience in marine engineering and shipbuilding.

The company has an extensive network of partnerships with major yacht manufacturers worldwide and provides services in multiple languages, including Russian, Ukrainian, Spanish, and English. The office is in Dania Beach, Florida, USA.

For more information and to view available yachts, you can visit the company's official website: <https://shestakovyachtsales.com>

## Contact details

---

**Phone:** +1(954)274-4435

**Email:** [andrey@shestakovyachtsales.com](mailto:andrey@shestakovyachtsales.com)

## Address

---



1380 Weeping Willow Way, Hollywood,  
Florida 33019