



SHESTAKOV

Yacht Sales

55 FLYBRIDGE - AZIMUT YACHTS



Builder:

Azimut Yachts

Model:

55 flybridge

LOA:

55' 0" (16.76 m)

Min Draft:

15' 0" (4.58 m)

Beam:

15' 0" (4.70 m)

Cruise Speed:

33 kn / 33 mph

Max Speed:

37 kn / 37 mph

Water Capacity:

169 Gallons

Fuel Capacity:

655 Gallons

Total Heads:

2

Hull Material:

Fiberglass and Plastic Yachts

Deck Material:

Fiberglass

If you would like to buy a yacht **55 FLYBRIDGE - Azimut Yachts** or would like help, please call +1(954)274-4435 or visit shestakovyachtsales.com

TABLE OF CONTENTS

OVERVIEW 3

- Selecting a 55 flybridge 3
- Features of the Model 3
- Technical Specifications 3
- Pricing and Ordering 4
- Questions and Answers 4
- Owner Experience Review 5
- Pros and Cons 6
- Comparison with Other Models 6

SPECIFICATIONS 8

GALLERY 9

CONTACTS 14

OVERVIEW

The 55 flybridge by Azimut Yachts is an elegant motor yacht built on a durable fiberglass build foundation, conceived to deliver brisk passages while offering comfortable living spaces aboard. Shestakov Yacht Sales lists and represents this model, with broker Andrey Shestakov available to advise on comparisons, selection and purchase logistics.

Selecting a 55 flybridge

If your priorities include a swift, adaptable yacht driven by twin inboard diesels, the 55 flybridge deserves a thorough look. Measuring 55 ft (16.76 m) overall with a 15 ft (4.7 m) beam, it is capable of cruising at 33 knots and attaining a 37 knot top end, striking a balance between performance and usable dimensions for private cruising typical of a motor yacht. Shestakov Yacht Sales and broker Andrey Shestakov can assist with availability checks and option reviews.

Features of the Model

- Performance-focused: 33 kn cruising and up to 37 kn maximum speed
- Powertrain: twin inboard **Caterpillar diesel** engines providing reliable propulsion
- Construction: hull built of fiberglass and plastic with a Fiberglass deck
- Capacities for extended outings: 655 gal fuel and 169 gal water storage
- Comfort aboard: two heads to accommodate guests and crew

Technical Specifications

- Model: 55 flybridge

- Builder: Azimut Yachts
- Type: motor yacht
- Hull: fiberglass and plastic; Deck: Fiberglass
- LOA: 55 ft (16.76 m)
- Beam: 15 ft (4.7 m)
- Draft (min): 15.037 ft (4.5833 m)
- Engines: 2 x Caterpillar; Type: Inboard; Fuel: Diesel
- Cruising speed: 33 kn (33 mph)
- Maximum speed: 37 kn (37 mph)
- Heads: 2
- Fuel capacity: 655 gal
- Water capacity: 169 gal

Pricing and Ordering

Market pricing for the 55 flybridge by Azimut Yachts fluctuates with region, condition and selected equipment. Shestakov Yacht Sales will assist in benchmarking market value, reviewing detailed specs and arranging vessel inspections. For customized advice and current availability, contact broker Andrey Shestakov and the Shestakov Yacht Sales team.

Questions and Answers

Q: What is the **cruising** and **maximum speed** of the 55 flybridge? A: The yacht maintains a cruise speed of **33 kn** (33 mph) and can reach a **maximum speed** of **37 kn** (37 mph).

Q: Which **engines** power the yacht? A: Propulsion is provided by **2 x Caterpillar inboard diesel** engines.

Q: What are the key **dimensions** and **draft** ? A: Overall length is **55 ft (16.76**

m) , the beam measures **15 ft (4.7 m)** , and the minimum **draft** is **15.037 ft (4.5833 m)** .

Q: How is it classified and what are the **materials** ? A: It is listed as a motor yacht with a fiberglass and plastic hull and a **Fiberglass** deck.

Q: Who can assist with **purchase** and **logistics** ? A: Shestakov Yacht Sales, led by broker **Andrey Shestakov** , handles evaluation, negotiation and closing services for the 55 flybridge by Azimut Yachts.

Owner Experience Review

As an owner operator's flybridge in the 55 foot segment, the 55 flybridge from Azimut Yachts is commonly chosen for family cruising and extended weekend runs. Interiors often feel generously proportioned for the length, benefitting from abundant natural light and flowing, designer lines; many boats are finished with three cabins plus a compact crew cabin. The flybridge and cockpit are arranged to prioritize outdoor living, typically featuring dining and lounge seating for six, a wet bar with griddle and an aft sunpad. Owners comparing this model to a 52 foot alternative report that the additional beam and length noticeably enhance onboard living comfort.

On the water, sea trials and owner feedback describe a quiet, well mannered hull that holds built in banked turns and presents a stable attitude through the rev range. Reported practical figures differ slightly from factory numbers: many owners note an efficient cruise near 27–28 knots at about 2,100 rpm and a top speed in the vicinity of 31 knots. That operating profile tends to suit personal cruising use more than intensive, high turn charter operations.

From a maintenance and ownership perspective, machinery access is through a cockpit hatch and a two step ladder into the engineroom, which owners often describe as "cozy," meaning some servicing tasks can be more confined

than on more spacious competitors. Buying guides consistently recommend detailed surveys of electrical, hydraulic and air conditioning systems, as refurbishments on older examples can become expensive. There are also community reports concerning finish issues and after sales or warranty disputes; experiences vary, so buyers should account for that feedback when commissioning surveys and negotiating terms.

Pros and Cons

- Generous interior volume and abundant natural light; three cabin layouts with crew space are common.
- Quiet, predictable handling that maintains banked turns; reported cruise ~27–28 knots with top speeds around 31 in owner trials.
- Flybridge and cockpit configured for alfresco living, with seating for six and wet bar/griddle amenities.
- Engine room access via a cockpit hatch leads to a compact, “cozy” work area that can make some service jobs tight.
- Careful inspection of electrical, hydraulic and A/C systems is advisable, as replacements on older models may be costly.
- Forum and owner reports cite occasional finish and after sales/warranty disputes that prospective buyers should consider.

Comparison with Other Models

Model	LOA	Beam	Draft	Speed (Cruising/Max)	Gross Tonnage
55 flybridge	55' 0" (16.76 m)	15' 0" (4.70 m)	15' 0" (4.58 m)	33 kn / 37 kn	
S6	60' 0" (18.31 m)	15' 0" (4.75 m)	17' 3" (5.25 m)		
50 Flybridge	52' 0" (16.08 m)	15' 0" (4.63 m)	13' 6" (4.11 m)	24 kn / 32 kn	26
64 Flybridge	66' 0" (20.14 m)	16' 0" (5.06 m)	15' 7" (4.75 m)	28 kn / 34 kn	
Atlantis 43	45' 0" (13.74 m)	13' 0" (4.24 m)	11' 9" (3.58 m)	30 kn / 35 kn	

62E	65' 0" (19.84 m)	16' 0" (5.06 m)	16' 2" (4.92 m)	28 kn / 33 kn	
55S	56' 0" (17.35 m)	15' 0" (4.72 m)		22 kn / 36 kn	
Grande 105	105' 0" (32 m)	24' 0" (7.32 m)	21' 1" (6.42 m)	22 kn / 26 kn	
86S	86' 0" (26.49 m)	19' 0" (5.82 m)		40 kn	
68S	68' 0" (20.73 m)	16' 0" (5.08 m)			

SPECIFICATIONS

LOA:

55' 0" (16.76 m)

Beam:

15' 0" (4.70 m)

Cruise Speed:

33 kn / 33 mph

Water Capacity:

169 Gallons

Total Heads:

2

Hull Material:

Fiberglass and Plastic Yachts

Engines:

2

Engine Type:

Inboard

Min Draft:

15' 0" (4.58 m)

Max Speed:

37 kn / 37 mph

Fuel Capacity:

655 Gallons

Deck Material:

Fiberglass

Manufacturer:

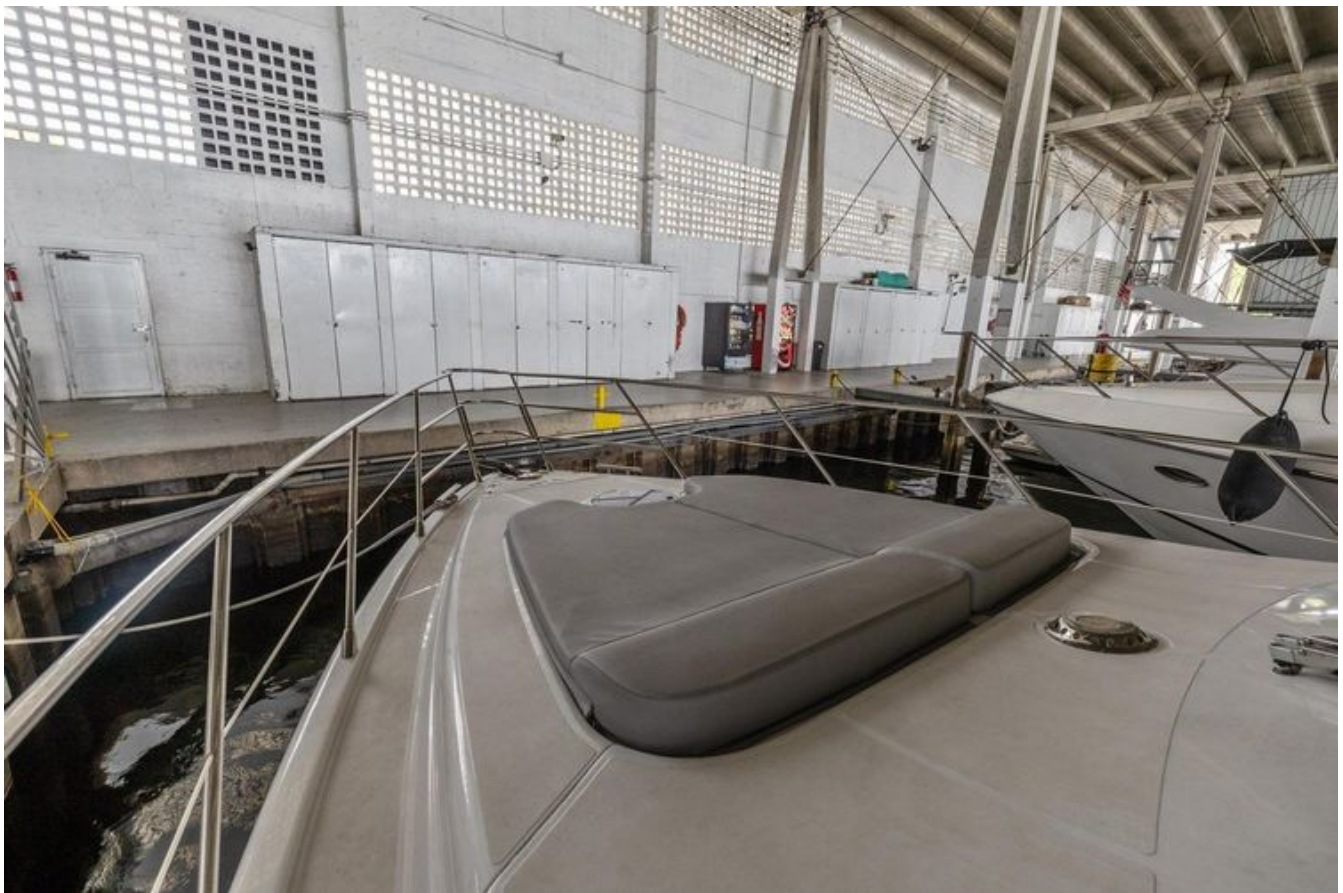
Caterpillar

Fuel Type:

Diesel

GALLERY











CONTACTS

Shestakov Yacht Sales is a brokerage company specializing in the sale and service of yachts worldwide. The company offers services for buying and selling both new and used motor yachts, sailing vessels, and luxury superyachts. They also provide yacht registration, insurance, technical maintenance, crew selection, and charter organization services across the U.S., Canada, Latin America, the Caribbean, and the Bahamas.

The founder and lead broker of the company is Andrey Shestakov, a licensed and certified expert with extensive experience in marine engineering and shipbuilding.

The company has an extensive network of partnerships with major yacht manufacturers worldwide and provides services in multiple languages, including Russian, Ukrainian, Spanish, and English. The office is in Dania Beach, Florida, USA.

For more information and to view available yachts, you can visit the company's official website: <https://shestakovyachtsales.com>

Contact details

Phone: +1(954)274-4435

Email: andrey@shestakovyachtsales.com

Address



1380 Weeping Willow Way, Hollywood,
Florida 33019