



SHESTAKOV

Yacht Sales

ATLANTIS - AZIMUT YACHTS



Builder:

Azimut Yachts

Model:

Atlantis

LOA:

55' 0" (16.76 m)

Beam:

15' 0" (4.67 m)

Max Draft:

13' 8" (4.17 m)

Hull Material:

Fiberglass and Plastic Yachts

Deck Material:

Fiberglass

Engines:

2

Manufacturer:

MAN

Engine Type:

Inboard

Fuel Type:

Diesel

If you would like to buy a yacht **ATLANTIS - Azimut Yachts** or would like help, please call +1(954)274-4435 or visit shestakovyachtsales.com

TABLE OF CONTENTS

OVERVIEW	3
Selecting a Atlantis	3
Features of the Model	3
Technical Specifications	4
Pricing and Ordering	4
Questions and Answers	4
Owner Experience Review	5
Pros and Cons	6
Comparison with Other Models	6
SPECIFICATIONS	8
GALLERY	9
CONTACTS	14

OVERVIEW

The Atlantis from Azimut Yachts brings classic Italian design to a practical 55 foot platform in the motor yacht cruiser category, built on a sturdy fiberglass and plastic platform. At Shestakov Yacht Sales, Andrey Shestakov and our brokerage team are available to walk you through the details of this 55-foot offering with professional advice and personal service.

Selecting a Atlantis

Picking the right 55 foot model depends on propulsion choices, dimensional fit, and build method. The Atlantis is equipped with twin inboard **MAN** diesel engines and measures 55 ft (16.76 m) LOA with a 15 ft (4.67 m) beam—important figures when considering range, marina fees, and handling characteristics. As a motor yacht in the cruiser class, she suits owners seeking reliable cruising comfort and well proven composite construction. Contact Andrey Shestakov at Shestakov Yacht Sales to confirm suitability, current stock, and scheduling.

Features of the Model

- Twin-engine reliability: a pair of inboard **MAN** diesel units delivering balanced power and control.
- Practical proportions: 55 ft (16.76 m) LOA with a 15 ft (4.67 m) beam for ample onboard living and entertaining areas.
- Underwater dimensions: 13.67 ft (4.1666 m) max draft to guide mooring and cruising considerations.
- Solid construction: a fiberglass and plastic hull paired with a fiberglass deck for durability and straightforward maintenance.
- Segment design: configured as a capable motor yacht intended for the

cruiser segment.

Technical Specifications

- Length overall (LOA): 55 ft (16.76 m)
- Beam: 15 ft (4.67 m)
- Draft (max): 13.67 ft (4.1666 m)
- Engines: 2 × MAN
- Engine type: Inboard
- Fuel: Diesel
- Hull: fiberglass and plastic
- Deck: Fiberglass

Pricing and Ordering

For up to date pricing, availability, and options to build or purchase the Atlantis by Azimut Yachts, reach out to Andrey Shestakov and the Shestakov Yacht Sales team. We manage specification reviews, coordinate surveys, negotiate terms, and organize delivery logistics to simplify your purchase from initial inquiry through final handover.

Questions and Answers

Q: What type of yacht is the Atlantis? A: **Type:** a motor yacht placed within the cruiser category and built on a fiberglass and plastic hull.

Q: What are the key dimensions? A: **LOA:** 55 ft (16.76 m); **Beam:** 15 ft (4.67 m); **Draft:** 13.67 ft (4.1666 m).

Q: What powers the yacht? A: **Engines:** 2 × **MAN** ; **Configuration:** **Inboard** ; **Fuel:** **Diesel** .

Q: What is the build material? A: **Hull:** fiberglass and plastic; **Deck:** Fiberglass.

Q: How do I order through Shestakov Yacht Sales? A: **Contact:** Andrey Shestakov at Shestakov Yacht Sales to review availability and next steps for an Atlantis by Azimut Yachts. We will detail **specifications** , **survey** , and **delivery** planning to fit your timeline.

Owner Experience Review

Owners typically deploy the Atlantis line from Azimut Yachts for family weekend escapes and summer day trips, often highlighting the open cockpit and expansive aft sunpad as ideal for socializing at anchor. At least one early 48/50 model has seen successful use in local charter service, while many purchasers use the series as a sporty express cruiser for watersports and toys. Interior layouts vary by model: trials praise the 43 for its generous below deck volume and luminous cabins, whereas the 51 is noted for a forward master complemented by a spacious ensuite. Exterior living zones are a recurring strength, though one test report described the 51's sunroof as undersized, and comments on galley and storage are mixed (ample stowage on the 43, but limited galley storage reported on the 51).

Underway, an Atlantis 50 owner described a dry hull with gentle slam reduction and no pounding. Across the range, owners and testers cite a comfortable cruise window around 18–32 knots, with the 51 reaching test top speeds close to 34.5 knots. Handling impressions are generally favorable—experts have called the 43's handling refined and accurate—and IPS driven examples often exhibit light, responsive helm feel. That said, some operators note the IPS can run out of lock, and a few trials found a large helm wheel awkward under certain conditions.

Reports from ownership include both routine maintenance items and recurring annoyances: a single Atlantis 50 owner mentioned leaking portholes

and a hot water heater that tripped breakers. Service access can be tight on particular models (for example, the 43), where major work might require lifting the tender garage floor to reach over the top of the engines. Forum posts cite cracked hardtop panels on some 50s and occasional trim and finish issues, and owners of IPS/stern drive boats emphasize the importance of meticulous scheduled servicing.

Pros and Cons

- Open cockpit and generous aft sunpad make the boat well suited to family outings and entertaining.
- Comfortable cruise band of 18–32 knots with strong performance and handling highlighted in tests.
- Versatile layouts across the range, featuring airy interiors on the 43 and a spacious forward master with ensuite on the 51.
- Some owners have experienced porthole leaks and hot water heater breaker trips on individual boats.
- Tight engine room access on certain models can complicate both routine servicing and major repairs.
- IPS characteristics: steering can feel light and may run out of lock, and a large helm wheel was found cumbersome in some evaluations.

Comparison with Other Models

Model	LOA	Beam	Draft	Speed (Cruising/Max)	Gross Tonnage
Atlantis	55' 0" (16.76 m)	15' 0" (4.67 m)	13' 8" (4.17 m)		
S6	60' 0" (18.31 m)	15' 0" (4.75 m)	17' 3" (5.25 m)		
50 Flybridge	52' 0" (16.08 m)	15' 0" (4.63 m)	13' 6" (4.11 m)	24 kn / 32 kn	26
64 Flybridge	66' 0" (20.14 m)	16' 0" (5.06 m)	15' 7" (4.75 m)	28 kn / 34 kn	
Atlantis 43	45' 0" (13.74 m)	13' 0" (4.24 m)	11' 9" (3.58 m)	30 kn / 35 kn	

62E	65' 0" (19.84 m)	16' 0" (5.06 m)	16' 2" (4.92 m)	28 kn / 33 kn	
55S	56' 0" (17.35 m)	15' 0" (4.72 m)		22 kn / 36 kn	
Grande 105	105' 0" (32 m)	24' 0" (7.32 m)	21' 1" (6.42 m)	22 kn / 26 kn	
86S	86' 0" (26.49 m)	19' 0" (5.82 m)		40 kn	
68S	68' 0" (20.73 m)	16' 0" (5.08 m)			

SPECIFICATIONS

LOA:

55' 0" (16.76 m)

Max Draft:

13' 8" (4.17 m)

Hull Material:

Fiberglass and Plastic Yachts

Engines:

2

Engine Type:

Inboard

Beam:

15' 0" (4.67 m)

Deck Material:

Fiberglass

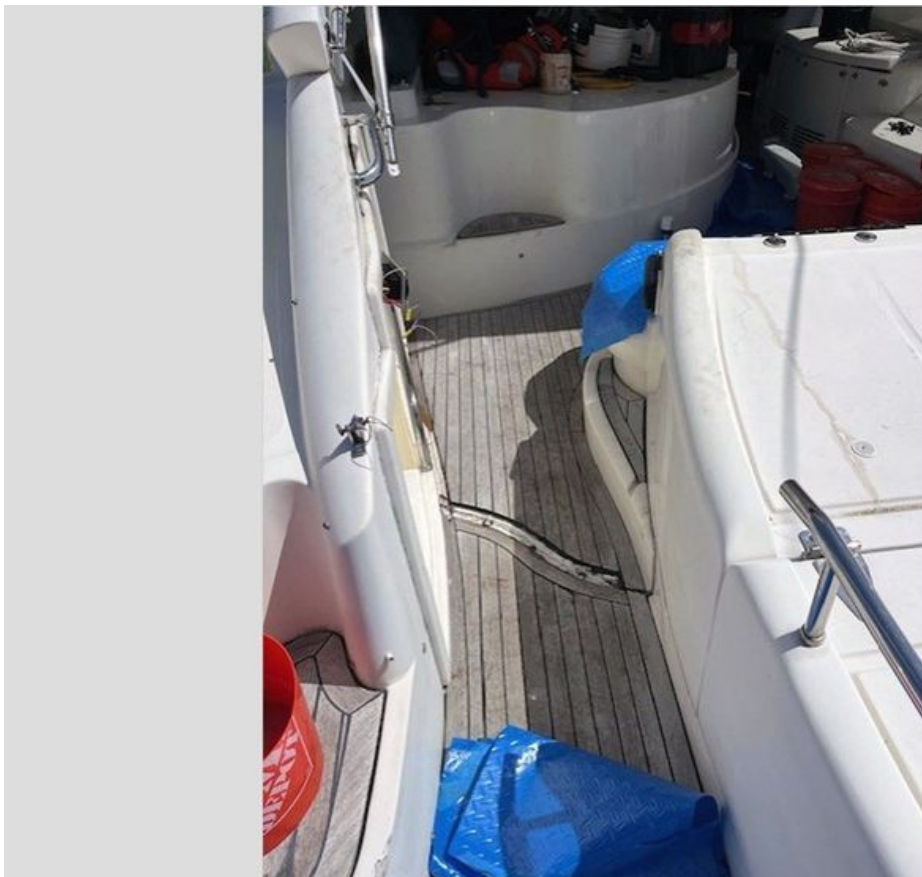
Manufacturer:

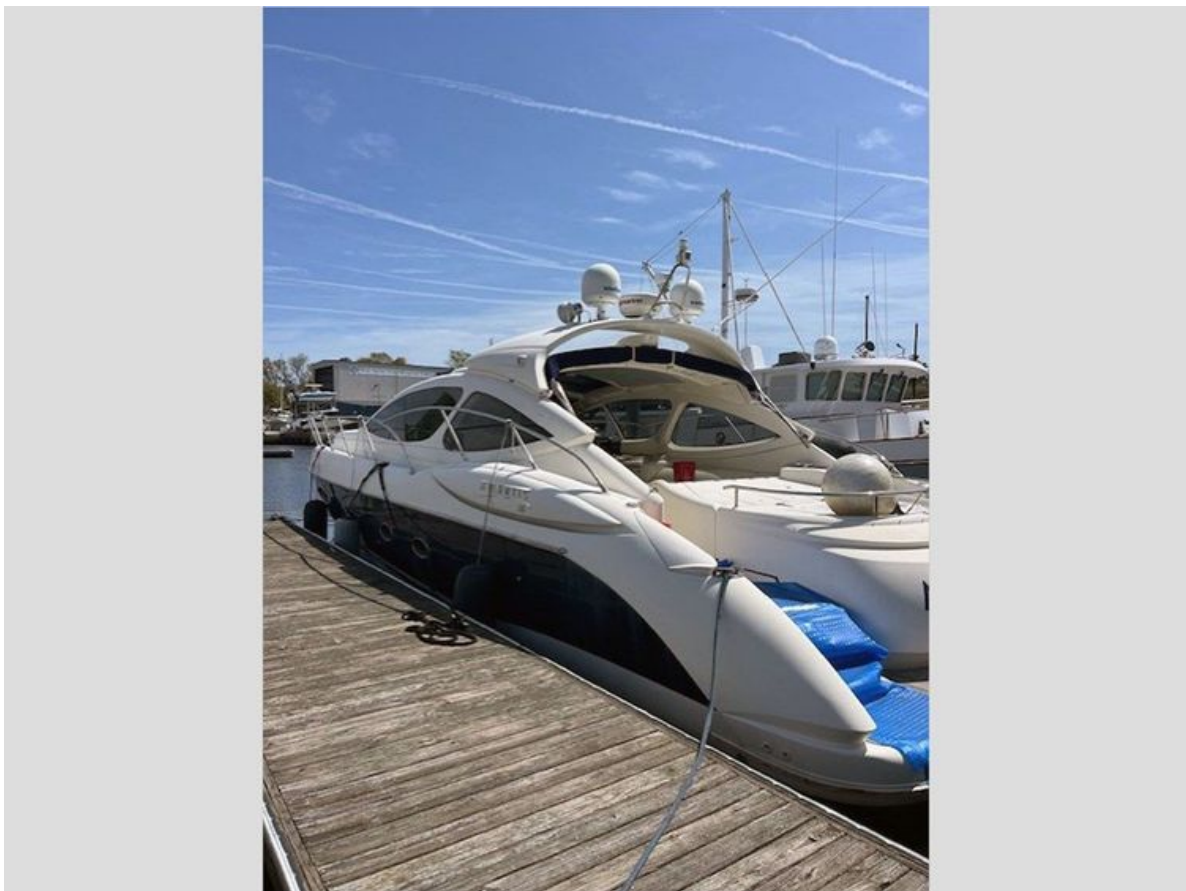
MAN

Fuel Type:

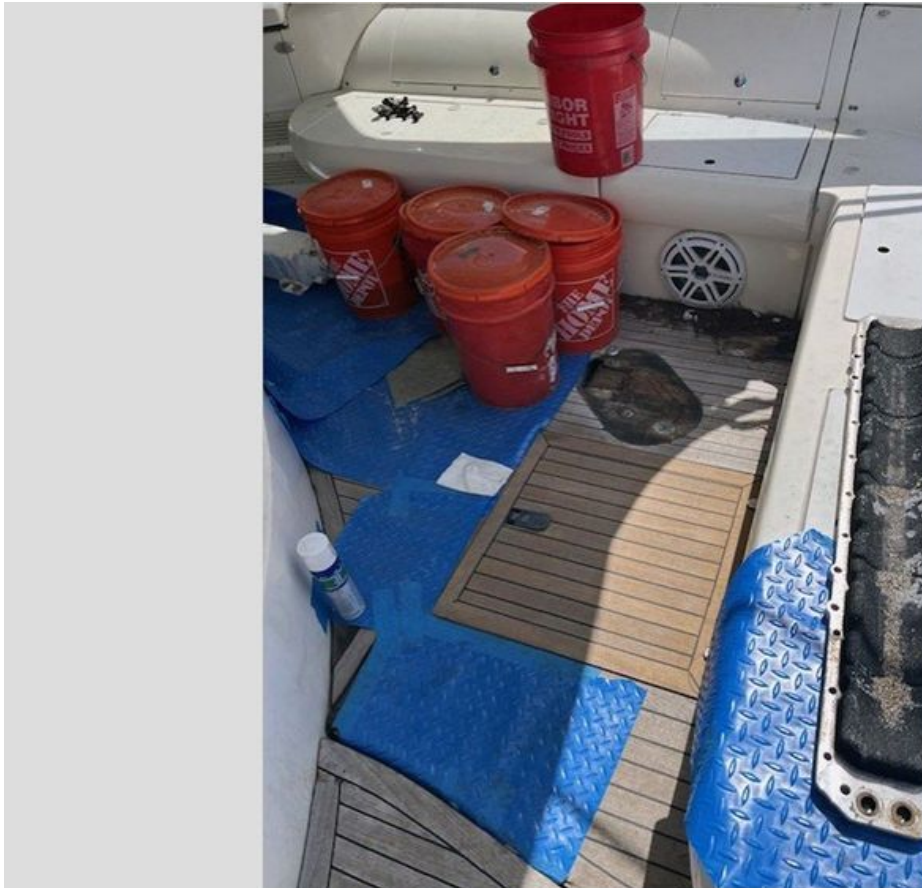
Diesel

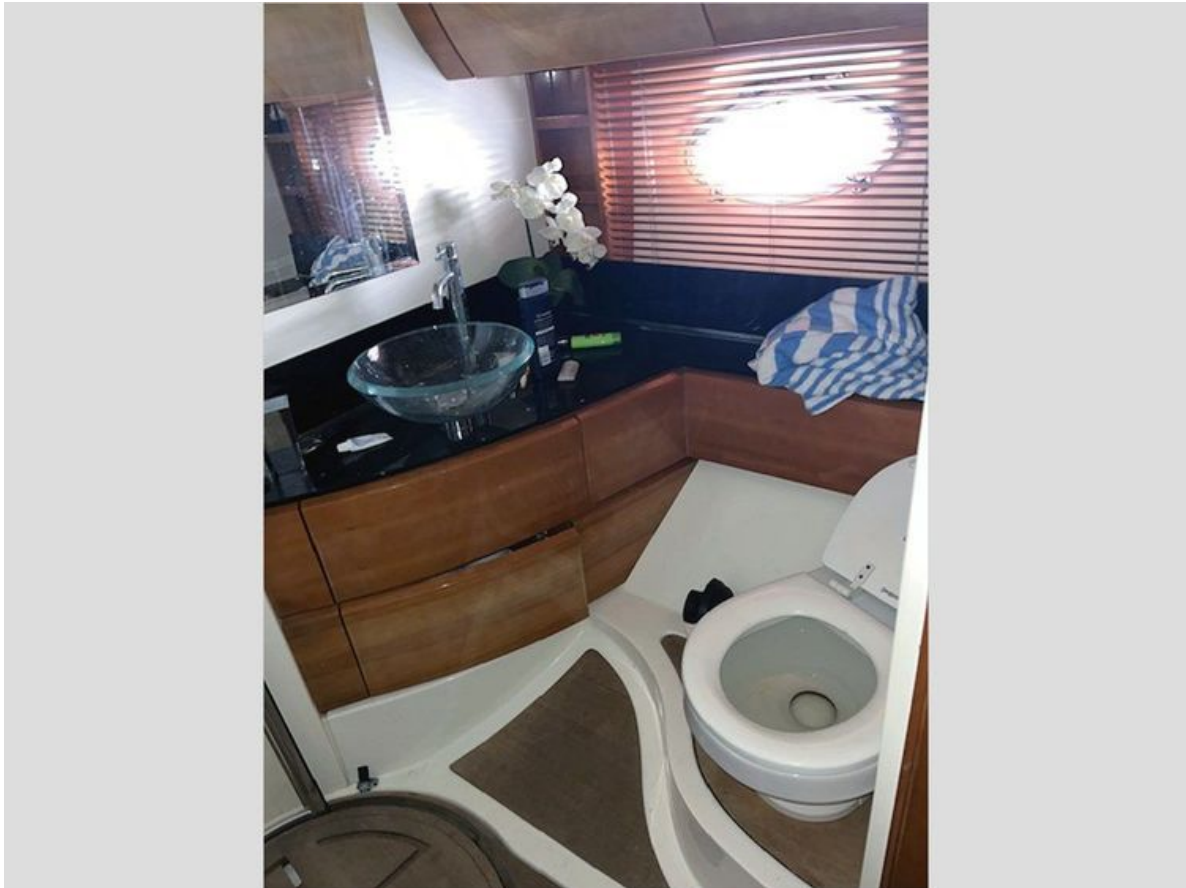
GALLERY











CONTACTS

Shestakov Yacht Sales is a brokerage company specializing in the sale and service of yachts worldwide. The company offers services for buying and selling both new and used motor yachts, sailing vessels, and luxury superyachts. They also provide yacht registration, insurance, technical maintenance, crew selection, and charter organization services across the U.S., Canada, Latin America, the Caribbean, and the Bahamas.

The founder and lead broker of the company is Andrey Shestakov, a licensed and certified expert with extensive experience in marine engineering and shipbuilding.

The company has an extensive network of partnerships with major yacht manufacturers worldwide and provides services in multiple languages, including Russian, Ukrainian, Spanish, and English. The office is in Dania Beach, Florida, USA.

For more information and to view available yachts, you can visit the company's official website: <https://shestakovyachtsales.com>

Contact details

Phone: +1(954)274-4435

Email: andrey@shestakovyachtsales.com

Address



1380 Weeping Willow Way, Hollywood,
Florida 33019