



SHESTAKOV

Yacht Sales

116 - BAGLIETTO



Builder:

Baglietto

Model:

116

LOA:

116' 0" (35.36 m)

Beam:

24' 0" (7.47 m)

Gross Tonnage:

183 Pounds

Hull Material:

Fiberglass and Plastic Yachts

Deck Material:

Fiberglass

Engines:

2

Manufacturer:

Deutz

Fuel Type:

Diesel

If you would like to buy a yacht **116 - Baglietto** or would like help, please call +1(954)274-4435 or visit shestakovyachtsales.com

TABLE OF CONTENTS

OVERVIEW	3
Selecting a 116	3
Features of the Model	3
Technical Specifications	4
Pricing and Ordering	4
Questions and Answers	4
Owner Experience Review	5
Pros and Cons	6
Comparison with Other Models	7
SPECIFICATIONS	8
GALLERY	9
CONTACTS	14

OVERVIEW

Presented by Shestakov Yacht Sales, the Baglietto 116 represents a classic 116-foot design constructed on a fiberglass and plastic foundation. Led by Andrey Shestakov, our brokerage team presents this motor yacht with transparent specifications and professional guidance to qualified buyers.

Selecting a 116

Choosing the right 116 requires matching its dimensions, construction, and propulsion to your intended use:

- Size and volume: at 116 ft (35.36 m) LOA, with a 24 ft (7.47 m) beam and 183 GT, the yacht delivers substantial internal volume and deck area.
- Powertrain confidence: twin Deutz engines running on Diesel provide redundancy and predictable fuel management.
- Construction: a hull in fiberglass and plastic paired with a Fiberglass deck for longevity and simplified upkeep.
- Category clarity: a true motor yacht intended for private ownership or luxury charter operations.
- Brokerage assurance: Andrey Shestakov and Shestakov Yacht Sales handle selection, negotiation, and closing with professional oversight.

Features of the Model

- Twin-engine diesel setup: powered by two Deutz units using Diesel for dependable range and operational balance.
- Sturdy construction: the Baglietto pedigree built on a fiberglass and plastic hull with a Fiberglass deck.
- Generous proportions: 116 ft LOA, 24 ft beam, and 183 GT offer flexible

accommodation, entertaining, and crew areas.

- Clear mission: engineered as a motor yacht to provide comfort and capability for long-range cruising.
- Professional representation: Shestakov Yacht Sales, under Andrey Shestakov, supports surveys, sea trials, and full documentation management.

Technical Specifications

- Builder: Baglietto
- Model: 116
- Category: motor yacht
- Hull: fiberglass and plastic
- Deck Material: Fiberglass
- LOA: 116 ft (35.36 m)
- Beam: 24 ft (7.47 m)
- Gross Tonnage: 183 GT
- Engines: 2 x Deutz
- Fuel Type: Diesel

Pricing and Ordering

Price, availability, and timelines for purchase, build, or refit of the Baglietto 116 are available on inquiry. Contact Andrey Shestakov and the Shestakov Yacht Sales team for tailored quotations, current listings, trade-in options, and hands-on transaction support from offer to closing.

Questions and Answers

Q: What defines the Baglietto 116 in terms of size? A: The yacht has an overall length of 116 ft (35.36 m) in **LOA**, a **beam** of 24 ft (7.47 m), and a **gross**

tonnage of 183 GT.

Q: Is the Baglietto 116 a motor yacht, and what is its hull made of? A: Yes — it is classified as a motor yacht featuring a fiberglass and plastic **hull** and a **Fiberglass** deck.

Q: What engines power the Baglietto 116? A: Propulsion comes from **two engines** manufactured by **Deutz** , operating on **Diesel** fuel.

Q: What is the gross tonnage of the Baglietto 116? A: The vessel's **Gross Tonnage** is 183 GT.

Q: How can I buy or list a Baglietto 116 with Shestakov Yacht Sales? A: Get in touch with **Andrey Shestakov** at **Shestakov Yacht Sales** for up-to-date listings, pricing details, and complete support for buying or listing a vessel.

Owner Experience Review

Owners operate the 116 by Baglietto in a variety of roles: week-long Mediterranean charters, private family voyages using the roughly 35 m layout with 4–6 guest cabins plus crew quarters, and short-term/day rentals — yachts such as “Rex” have been chartered for brief hires in Miami. Typical charter and brokerage information lists crew complements of 6–7, which supports extended cruising and liveaboard operations without overtaxing the vessel's service routines.

How the yacht performs underway depends largely on the original engine package and any repower work. Listings note cruise speeds near 14 knots for examples with Deutz V16 engines, while vessels repowered with MTU units often cruise closer to 22 knots; some Deutz-powered hulls report top speeds around ~20 knots, with low-to-mid 20s achieved where upgrades have been installed. Hull forms and construction can differ between hulls — semi-displacement GRP and aluminium versions are both mentioned — but

reviews from the press and owner forums commonly point to reliable seakeeping and a steady motion in standard Mediterranean conditions. The compromise is maintenance: Deutz TBD 616 V16s require significant scheduled overhauls and specialist attention, and many hulls over 20 years old will need substantial refit and upgrade budgets; parts and labour for these large V16s are a notable expense.

Aboard, configurations with full-beam masters and adaptable multi-cabin arrangements are frequent, and interiors are often finished in warm cherry wood paired with white soft furnishings. The main deck saloon tends to be expansive, while the aft deck and beach club areas are proportioned for entertaining, making the layout well suited to both family life and charter events. Beyond practicalities, style remains influential in this class — summed up by one enthusiast: “Baglietto is super sexy” — yet owners commonly emphasize usable volume and the boat’s capability for crewed cruising as primary attractions.

Pros and Cons

- Flexible 4–6 cabin layouts with full-beam master(s) accommodate family cruising and charter operations.
- Generous saloon and aft deck/beach club areas are well suited to events and social gatherings.
- Generally solid seakeeping and a stable ride make the yacht appropriate for typical Mediterranean conditions.
- Performance varies with propulsion: Deutz V16-equipped yachts typically cruise around ~14 kn, while MTU repowers can bring cruising speeds nearer ~22 kn.
- Deutz TBD 616 V16s demand substantial periodic overhauls and specialist servicing, which carry significant costs.
- Many 20+ year-old hulls will require meaningful refit and upgrade budgets to

meet contemporary standards.

Comparison with Other Models

Model	LOA	Beam	Draft	Speed (Cruising/ Max)	Gross Tonnage
41M Custom	135' 0" (41.15 m)	27' 0" (8.20 m)	16' 5" (5 m)	26 kn / 28 kn	
26 WJ	84' 0" (25.75 m)	18' 0" (5.70 m)	3' 1" (0.93 m)	35 kn / 50 kn	105
54 Meter	177' 0" (54 m)	33' 0" (10.20 m)	10' 6" (3.20 m)	12 kn / 17 kn	739
116	116' 0" (35.36 m)	24' 0" (7.47 m)			183
44M	145' 0" (44.45 m)	28' 0" (8.80 m)	787' 5" (240 m) – 853' 0" (260 m)	16 kn / 17 kn	522
BAGLIETTO 42M	136' 0" (41.70 m)	26' 0" (8 m)	5' 11" (1.80 m)	22.5 kn / 27.5 kn	385
MV19	64' 0" (19.50 m)	16' 0" (5.10 m)	5' 3" (1.60 m)	30 kn / 39 kn	
N/A	48' 0" (14.90 m)	7' 0" (2.20 m)	6' 11" (2.10 m)	6 kn / 9 kn	8

SPECIFICATIONS

LOA:

116' 0" (35.36 m)

Gross Tonnage:

183 Pounds

Hull Material:

Fiberglass and Plastic Yachts

Engines:

2

Fuel Type:

Diesel

Beam:

24' 0" (7.47 m)

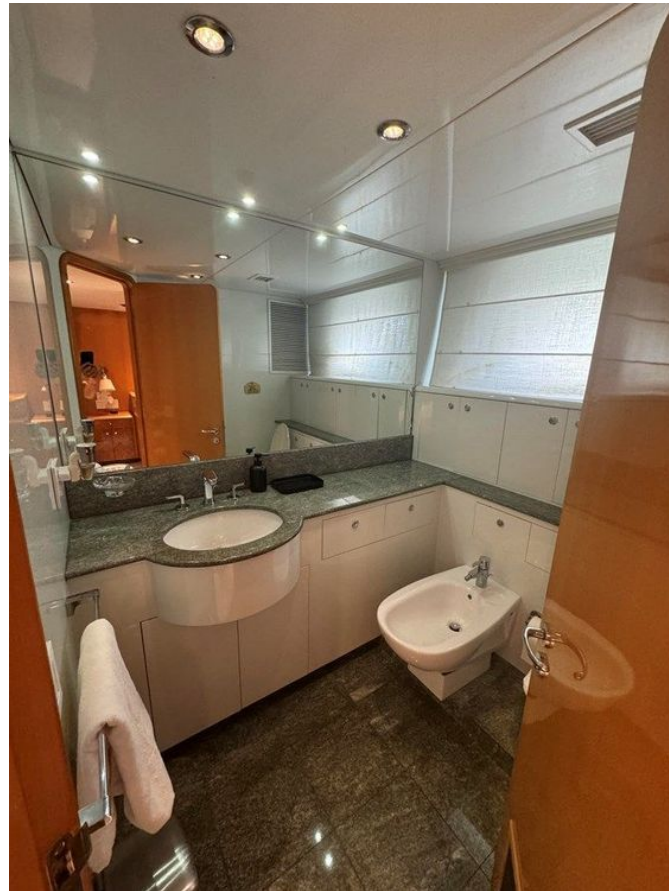
Deck Material:

Fiberglass

Manufacturer:

Deutz

GALLERY











CONTACTS

Shestakov Yacht Sales is a brokerage company specializing in the sale and service of yachts worldwide. The company offers services for buying and selling both new and used motor yachts, sailing vessels, and luxury superyachts. They also provide yacht registration, insurance, technical maintenance, crew selection, and charter organization services across the U.S., Canada, Latin America, the Caribbean, and the Bahamas.

The founder and lead broker of the company is Andrey Shestakov, a licensed and certified expert with extensive experience in marine engineering and shipbuilding.

The company has an extensive network of partnerships with major yacht manufacturers worldwide and provides services in multiple languages, including Russian, Ukrainian, Spanish, and English. The office is in Dania Beach, Florida, USA.

For more information and to view available yachts, you can visit the company's official website: <https://shestakovyachtsales.com>

Contact details

Phone: +1(954)274-4435

Email: andrey@shestakovyachtsales.com

Address



1380 Weeping Willow Way, Hollywood,
Florida 33019