



SHESTAKOV

Yacht Sales

COMMERCIAL COI PASSENGER – BEACHCRAFT



Builder:

BEACHCRAFT

Model:

Commercial COI Passenger

LOA:

26' 0" (8.05 m)

Min Draft:

9' 10" (3 m)

Beam:

10' 0" (3.05 m)

Total Heads:

1

Hull Material:

Fiberglass and Plastic Yachts

Deck Material:

Fiberglass

Engines:

1

Manufacturer:

Suzuki

Engine Type:

Outboard

Fuel Type:

Gas

If you would like to buy a yacht **COMMERCIAL COI PASSENGER – BEACHCRAFT** or would like help, please call +1(954)274-4435 or visit shestakovyachtsales.com

TABLE OF CONTENTS

OVERVIEW 3

- Selecting a Commercial COI Passenger 3
- Features of the Model 3
- Technical Specifications 3
- Pricing and Ordering 4
- Questions and Answers 4
- Owner Experience Review 5
- Pros and Cons 6
- Comparison with Other Models 6

SPECIFICATIONS 7

GALLERY 8

CONTACTS 13

OVERVIEW

The Commercial COI Passenger from BEACHCRAFT is a purpose built, compact commercial motor yacht constructed on a sturdy fiberglass and plastic hull. Listed and represented by Andrey Shestakov of Shestakov Yacht Sales, it combines uncomplicated propulsion with utilitarian onboard comforts tailored for a range of commercial applications.

Selecting a Commercial COI Passenger

Opting for the Commercial COI Passenger signals a preference for straightforward functionality within a compact footprint. Measuring 26 ft (8.05 m) overall with a 10 ft (3.05 m) beam and driven by a single outboard, this motor yacht is designed for easy handling and low complexity maintenance. Its relatively deep 3 m (9.843 ft) draft combined with fiberglass construction helps provide reliable performance for a variety of working roles.

Features of the Model

- Single engine propulsion: 1 x Suzuki outboard, gas fuel
- Basic onboard provisions including 1 head
- Robust deck built in fiberglass
- Hull construction specified as a fiberglass and plastic hull
- Compact overall dimensions optimized for maneuverability and operational layouts

Technical Specifications

- Yacht type: motor yacht

- Builder: BEACHCRAFT
- Model: Commercial COI Passenger
- LOA: 26 ft (8.05 m)
- Beam: 10 ft (3.05 m)
- Draft: 9.843 ft (3 m)
- Engines: 1
- Engine manufacturer: Suzuki
- Engine type: Outboard
- Fuel type: Gas
- Hull: fiberglass and plastic hull
- Deck material: Fiberglass
- Heads: 1

Pricing and Ordering

For the latest pricing, stock status, and personalized advice on the Commercial COI Passenger, please reach out to Andrey Shestakov and the Shestakov Yacht Sales team. We will assist with specification choices, arranging viewings, and guiding you through the purchase process.

Questions and Answers

Q: What is the Commercial COI Passenger and who builds it? A: The Commercial COI Passenger is a commercial oriented motor yacht manufactured by BEACHCRAFT and built on a fiberglass and plastic hull.

Q: What are the key dimensions of this model? A: The yacht's dimensions include an **LOA** of **26 ft (8.05 m)** , a **beam** of **10 ft (3.05 m)** , and a **draft** of **9.843 ft (3 m)** .

Q: What powers the yacht? A: Propulsion is provided by **1 Suzuki outboard**

engine operating on **gas** , offering a simple and effective powerplant solution.

Q: Which onboard amenities and materials stand out? A: Highlighted features include **1 head** and a **fiberglass deck** , set atop a fiberglass and plastic hull for durability.

Q: How can I get pricing or place an order? A: Contact **Andrey Shestakov** at **Shestakov Yacht Sales** to review availability, discuss specifications, and take the next steps to acquire the Commercial COI Passenger.

Owner Experience Review

Owners and operators commonly deploy the Commercial COI Passenger from BEACHCRAFT for commercial sightseeing and eco tourism activities—dolphin excursions, island shuttles, snorkeling trips—as well as short nearshore day charters and sunset runs. Some advertised 2003 Wildside variants list a USCG Certificate of Inspection authorizing service for 18 passengers plus 2 crew, which clearly places those examples in the inspected day passenger category. Owners familiar with similar Beachcraft hulls report a composed, predictable ride often compared to Glasply/Tollycraft style lines; stability and a solid feel are emphasized over high speed, and many sales listings do not publish cruise or top speed figures.

The vessel's layout is tailored to daytime commercial use: brokers note onboard provisions such as a head and sink, an exterior topside sink, two bimini tops for shade, and cushioned passenger seating in the cockpit—features aimed at passenger comfort during sightseeing. Configurations prioritize charter capacity and day use practicality rather than private overnight accommodations, and restoration discussions about older Beachcraft models point to modest interior finishes typical of dayboats and cuddy formats.

Prospective buyers should perform thorough inspections on aging boats. Forum discussions frequently raise concerns about stringer and floor rot and recommend careful checks of floors, stringers, and deck/core junctions; documented mechanical problems include cracked exhaust manifolds and issues with tilt lift mechanisms and outdrives on older units. Because many are operated as inspected passenger vessels, maintaining USCG compliance is part of ownership; some listings reference a recently passed biennial out of water inspection, but purchasers should confirm current COI status and examine maintenance histories.

Pros and Cons

- 2003 Wildside listings show inspected passenger credentials, including a USCG COI for 18 passengers plus 2 crew.
- Owners of comparable Beachcraft hulls describe smooth, reliable handling and a substantial feel associated with Glasply/Tollycraft style hull lines.
- Day charter amenities often include a head and sink, a topside sink, two bimini tops, and cushioned passenger seating for shade and comfort.
- Repeated owner reports of stringer and floor rot on older Beachcraft hulls make careful structural inspection essential.
- Forum threads note age related mechanical and drivetrain concerns, such as cracked exhaust manifolds and tilt lift/outdrive problems.
- Performance numbers are commonly omitted from sale listings, so buyers should not expect published cruise or maximum speed figures.

Comparison with Other Models

Model	LOA	Beam	Draft	Speed (Cruising/...	Gross Tonnage
Commercial COI Passenger	26' 0" (8.05 m)	10' 0" (3.05 m)	9' 10" (3 m)		

SPECIFICATIONS

LOA:

26' 0" (8.05 m)

Beam:

10' 0" (3.05 m)

Total Heads:

1

Hull Material:

Fiberglass and Plastic Yachts

Engines:

1

Engine Type:

Outboard

Min Draft:

9' 10" (3 m)

Deck Material:

Fiberglass

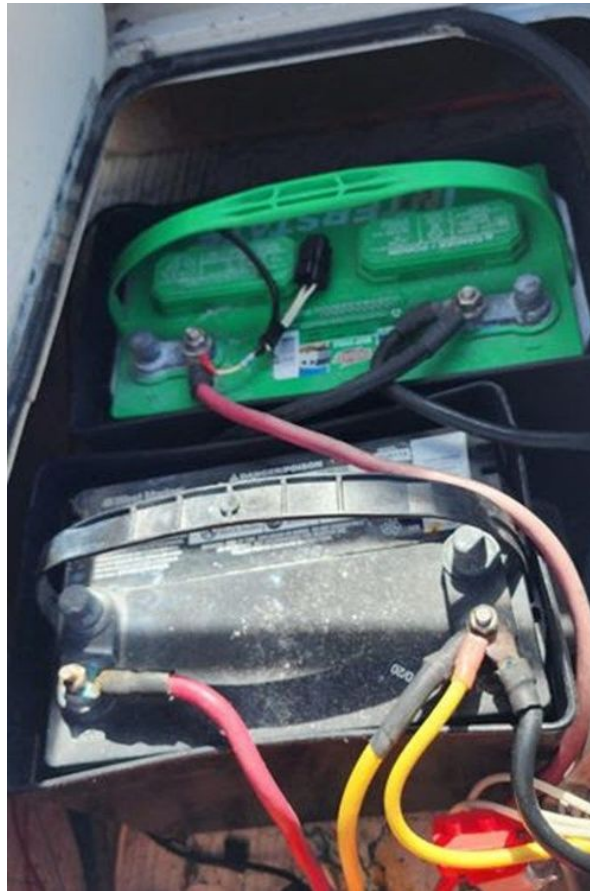
Manufacturer:

Suzuki

Fuel Type:

Gas

GALLERY











CONTACTS

Shestakov Yacht Sales is a brokerage company specializing in the sale and service of yachts worldwide. The company offers services for buying and selling both new and used motor yachts, sailing vessels, and luxury superyachts. They also provide yacht registration, insurance, technical maintenance, crew selection, and charter organization services across the U.S., Canada, Latin America, the Caribbean, and the Bahamas.

The founder and lead broker of the company is Andrey Shestakov, a licensed and certified expert with extensive experience in marine engineering and shipbuilding.

The company has an extensive network of partnerships with major yacht manufacturers worldwide and provides services in multiple languages, including Russian, Ukrainian, Spanish, and English. The office is in Dania Beach, Florida, USA.

For more information and to view available yachts, you can visit the company's official website: <https://shestakovyachtsales.com>

Contact details

Phone: +1(954)274-4435

Email: andrey@shestakovyachtsales.com

Address



1380 Weeping Willow Way, Hollywood,
Florida 33019