



SHESTAKOV

Yacht Sales

FIRST 42S7 - BENETEAU



Builder:

Beneteau

Model:

First 42s7

LOA:

42' 0" (12.80 m)

Min Draft:

19' 5" (5.92 m)

Beam:

13' 0" (4.12 m)

Cruise Speed:

7 kn / 8.06 mph

Max Speed:

8.5 kn / 9.78 mph

Gross Tonnage:

18220 Pounds

Water Capacity:

132 Gallons

Fuel Capacity:

53 Gallons

Total Heads:

2

Hull Material:

Fiberglass and Plastic Yachts

If you would like to buy a yacht **FIRST 42S7 - Beneteau** or would like help, please call +1(954)274-4435 or visit shestakovyachtsales.com

TABLE OF CONTENTS

OVERVIEW	3
Selecting a First 42s7	3
Features of the Model	3
Technical Specifications	4
Pricing and Ordering	4
Questions and Answers	4
Owner Experience Review	5
Pros and Cons	6
Comparison with Other Models	6
SPECIFICATIONS	8
GALLERY	9
CONTACTS	14

OVERVIEW

The First 42s7 from Beneteau is a polished sail yacht aimed at buyers in the cruising sailboats for sale segment, built on a strong fiberglass and plastic hull. Shestakov Yacht Sales represents this model through broker Andrey Shestakov, offering a yacht that marries proven naval architecture with practical cruising details.

Selecting a First 42s7

Opting for a First 42s7 means choosing a 42-foot platform whose hull lines were penned by Bruce Farr and whose interiors originate from Beneteau. Built as a monohull from fiberglass and plastic, this model is aimed at sailors who want a blend of spirited performance and comfortable passage-making within the cruising sailboat market.

Features of the Model

- Design heritage blending performance and cruising sensibility: hull by Bruce Farr; interior by Beneteau.
- Practical cruising proportions: LOA 42 ft (12.8 m) with a 13 ft (4.12 m) beam.
- Sturdy construction using fiberglass and plastic with a fiberglass deck.
- Single-engine propulsion: Perkins inboard diesel installed.
- Typical passage speeds: comfortable cruising at 7 kn (8.06 mph) and a top-end near 8.5 kn (9.78 mph).
- Liveaboard-capable layout: sleeps six, two heads, and tankage sized for longer voyages.

Technical Specifications

- Length overall (LOA): 42 ft (12.8 m)
- Beam: 13 ft (4.12 m)
- Draft (min): 19.411 ft (5.9166 m)
- Hull configuration: Monohull
- Hull material: fiberglass and plastic
- Deck material: Fiberglass
- Hull designer: Bruce Farr
- Interior designer: Beneteau
- Engines: 1 × Perkins, Inboard, Diesel
- Cruising speed: 7 kn (8.06 mph)
- Max speed: 8.5 kn (9.78 mph)
- Gross tonnage: 18220
- Accommodation: 6
- Heads: 2
- Fresh water capacity: 132 gal
- Fuel capacity: 53 gal

Pricing and Ordering

To get up-to-date pricing or check availability for the First 42s7—a noteworthy sail yacht among cruising sailboats for sale—reach out to Andrey Shestakov at Shestakov Yacht Sales. Our brokerage team will assist with selection, surveys, price negotiation, and delivery planning for boats built in fiberglass and plastic.

Questions and Answers

- What type of yacht is the First 42s7? The First 42s7 is a **sail yacht** marketed in the **cruising sailboats for sale** category and constructed with a **fiberglass**

and plastic hull.

- Who designed it? The vessel's **hull** was created by **Bruce Farr** , while the **interior** design is by Beneteau.
- What are the performance figures? Expect a **cruising speed** around 7 kn (8.06 mph) with a **top speed** near 8.5 kn (9.78 mph).
- How many people can it accommodate? The yacht provides **accommodations for 6** and includes **2 heads** , making it suitable for family or small-crew cruising.
- How do I purchase through Shestakov Yacht Sales? **Contact** Andrey Shestakov at Shestakov Yacht Sales to explore First 42s7 listings in the **cruising sailboats for sale** market and to arrange surveys, contracts, and delivery logistics.

Owner Experience Review

Owners typically employ the Beneteau First 42s7 as a spirited weekend or coastal cruiser and often race it in performance club events, reflecting its Farr-designed pedigree. Feedback highlights strong windward ability and lively acceleration in light airs; many recommend flying a drifter or a large genoa when the wind drops below roughly 6 knots. In seaway conditions owners report steady, confidence-inspiring manners—boats handle 15–20 kt winds and 4–6 ft seas without fuss—and while downwind speeds are respectable, they fall short of contemporary grand prix targets. One owner captured the helm sensation succinctly: “points like a hound dog and feels like she’s running on tracks.”

Aboard, the Philippe Starck–styled interior is airy, offering about 6 ft 5 in of headroom, and owners praise the spacious saloon, practical storage, and flexible two or three cabin arrangements that suit liveaboard couples and family cruising. The galley and fit out are straightforward to modify—some owners have even swapped a stove for a clothes washer—so assessing the

original ergonomics before altering is wise. Typical maintenance notes call out the Whitlock pedestal/steering column; dissimilar metal corrosion has led several owners to replace plain steel bearings with ceramic alternatives. Surveyors recommend careful inspection of the structural matrix and the hull deck joint after any grounding, and checking the balsa cored deck around fittings, hatches, and the mast base for signs of moisture. Many examples are fitted with Yanmar 4JH series auxiliary engines in the ~45–51 hp range, which owners generally find dependable, though confirming service records or any repower work on an individual boat is advised.

Pros and Cons

- Excellent pointing ability and a responsive, accurate helm; owners note strong upwind performance and tracking.
- Handles typical coastal seaways with assurance; well suited to weekend passages and club racing.
- Bright Philippe Starck-styled cabin with roughly 6 ft 5 in headroom and practical two or three cabin layouts.
- In winds below about 6 knots it benefits from a drifter or a large genoa to retain momentum.
- Whitlock pedestal/steering column corrosion is a known issue—bearing upgrades may be required.
- Thorough surveys are recommended to inspect the structural matrix, the hull deck joint after grounding, and balsa cored deck areas for moisture around fittings.

Comparison with Other Models

Model	LOA	Beam	Draft	Speed (Cruising/Max)	Gross Tonnage
-------	-----	------	-------	----------------------	---------------

First 42s7	42' 0" (12.80 m)	13' 0" (4.12 m)	19' 5" (5.92 m)	7 kn / 8.5 kn	18220
Swift Trawler 42	44' 0" (13.49 m)	14' 0" (4.24 m)	11' 3" (3.42 m)		
Swift Trawler 41 Sedan	44' 0" (13.44 m)	13' 0" (4.19 m)	12' 4" (3.75 m)		
Swift Trawler 41 Fly	44' 0" (13.44 m)	13' 0" (4.19 m)			
473	47' 0" (14.33 m)	14' 0" (4.32 m)	18' 4" (5.58 m)		
Swift Trawler 41	44' 0" (13.44 m)	13' 0" (4.19 m)	12' 4" (3.75 m)	12 kn / 18 kn	
40	39' 0" (12.14 m)	12' 0" (3.91 m)	20' 6" (6.25 m)		
Oceanis 58	59' 0" (18.01 m)	16' 0" (5.11 m)	27' 11" (8.50 m)	10 kn	
Oceanes 46	49' 0" (14.94 m)	13' 0" (4.24 m)	18' 10" (5.75 m) – 21' 1" (6.42 m)		
Oceanis 461	46' 0" (14.02 m)	13' 0" (4.24 m)	18' 10" (5.75 m)		

SPECIFICATIONS

LOA:

42' 0" (12.80 m)

Beam:

13' 0" (4.12 m)

Cruise Speed:

7 kn / 8.06 mph

Gross Tonnage:

18220 Pounds

Fuel Capacity:

53 Gallons

Total Heads:

2

Hull Material:

Fiberglass and Plastic Yachts

Hull Configuration:

Monohull

Interior Designer:

Beneteau

Engines:

1

Engine Type:

Inboard

Min Draft:

19' 5" (5.92 m)

Max Speed:

8.5 kn / 9.78 mph

Water Capacity:

132 Gallons

Deck Material:

Fiberglass

Hull Designer:

Bruce Farr

Manufacturer:

Perkins

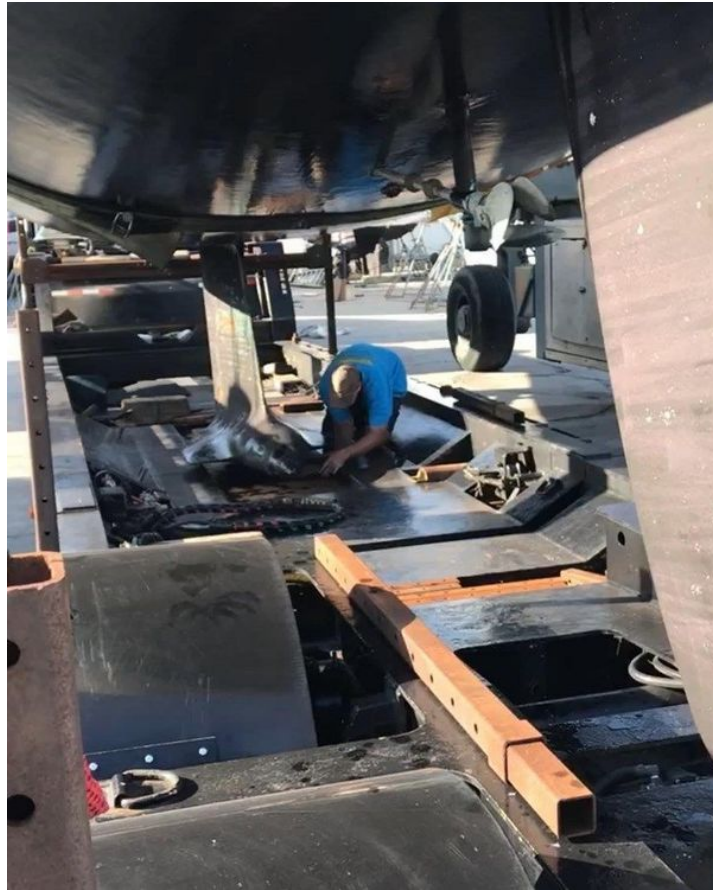
Fuel Type:

Diesel

GALLERY











CONTACTS

Shestakov Yacht Sales is a brokerage company specializing in the sale and service of yachts worldwide. The company offers services for buying and selling both new and used motor yachts, sailing vessels, and luxury superyachts. They also provide yacht registration, insurance, technical maintenance, crew selection, and charter organization services across the U.S., Canada, Latin America, the Caribbean, and the Bahamas.

The founder and lead broker of the company is Andrey Shestakov, a licensed and certified expert with extensive experience in marine engineering and shipbuilding.

The company has an extensive network of partnerships with major yacht manufacturers worldwide and provides services in multiple languages, including Russian, Ukrainian, Spanish, and English. The office is in Dania Beach, Florida, USA.

For more information and to view available yachts, you can visit the company's official website: <https://shestakovyachtsales.com>

Contact details

Phone: +1(954)274-4435

Email: andrey@shestakovyachtsales.com

Address



1380 Weeping Willow Way, Hollywood,
Florida 33019