



SHESTAKOV

Yacht Sales

BERING 65 – BERING YACHTS



Builder:

Bering Yachts

Model:

BERING 65

LOA:

64' 0" (19.78 m)

Beam:

19' 0" (6 m)

Max Draft:

5' 9" (1.75 m)

Cruise Speed:

8 kn / 9.21 mph

Max Speed:

10 kn / 11.51 mph

Water Capacity:

396.26 Gallons

Fuel Capacity:

4490.92 Gallons

Hull Material:

Steel Yachts

Deck Material:

Steel

Hull Configuration:

Monohull

If you would like to buy a yacht **BERING 65 – Bering Yachts** or would like help, please call +1(954)274-4435 or visit shestakovyachtsales.com

TABLE OF CONTENTS

OVERVIEW 3

- Selecting a BERING 65 3
- Features of the Model 3
- Technical Specifications 4
- Pricing and Ordering 4
- Questions and Answers 4
- Owner Experience Review 5
- Pros and Cons 6
- Comparison with Other Models 6

SPECIFICATIONS 8

GALLERY 9

CONTACTS 14

OVERVIEW

The BERING 65 from Bering Yachts is a sturdy motor yacht in the motor yacht class that combines a heavy-duty steel hull with twin inboard diesel propulsion to deliver economical cruising and assured handling in varied conditions.

Selecting a BERING 65

If your priority is a steel monohull with sensible proportions and economical speeds, the BERING 65 is a compelling option. Measuring 64 ft (19.78 m) LOA with a 19 ft (6 m) beam and a 1.75 m (5.741 ft) draft, it strikes a balance between interior volume and shallow-water accessibility. Propulsion is provided by twin Cummins inboard diesels, giving a comfortable 8-knot cruise and a 10-knot top end. As a motor yacht in the motor yacht class, it appeals to owners who prize robustness, straightforward systems, and steady long-range performance on a steel hull.

Features of the Model

- Classification: A motor yacht in the motor yacht segment engineered for consistent 8–10 knot operation.
- Construction: Durable steel hull with a steel deck in a monohull layout.
- Propulsion: Twin inboard diesel engines by Cummins, chosen for simple, dependable performance.
- Designer: Hull lines developed by BERING YACHTS.
- Capacities: 4,490.92 gal fuel and 396.26 gal fresh water provide extended autonomy between ports.
- Dimensions: 64 ft (19.78 m) LOA and 19 ft (6 m) beam afford notable interior volume for a vessel of this length.

Technical Specifications

- Category: motor yacht / motor yacht class
- Hull and Deck: steel hull; deck material: Steel; configuration: Monohull
- LOA: 64 ft (19.78 m)
- Beam: 19 ft (6 m)
- Draft (max): 5.741 ft (1.75 m)
- Speeds: Cruise 8 kn (9.21 mph); Max 10 kn (11.51 mph)
- Engines: 2 x Cummins; Type: Inboard; Fuel: Diesel
- Hull Designer: BERING YACHTS
- Fuel Capacity: 4,490.92 gal
- Water Capacity: 396.26 gal

Pricing and Ordering

For pricing information, build availability, and guidance on ordering the BERING 65 from Bering Yachts, please reach out to Andrey Shestakov at Shestakov Yacht Sales. Our brokerage team will assist with specification choices, accessory options, and delivery timelines tailored to your program.

Questions and Answers

- What type of yacht is the BERING 65? It is a motor yacht within the motor yacht category, designed to prioritize steady, fuel-efficient operation and reliable seakeeping.
- What are the hull and deck materials? The **hull** is a steel hull, and the deck is Steel, assembled in a monohull arrangement to simplify handling and maintenance.
- What are the speeds? The **cruising speed** is 8 kn (9.21 mph), with a **maximum speed** of 10 kn (11.51 mph), making it well suited for economical

passagemaking within its design parameters.

- What powers the yacht? Two **inboard diesel** engines by **Cummins** provide dependable thrust and support the model's mission as a long-range motor yacht.
- What are the key dimensions and capacities? Principal **dimensions** are 64 ft (19.78 m) LOA, 19 ft (6 m) beam, and 5.741 ft (1.75 m) draft. **Fuel capacity** is 4,490.92 gal and **water capacity** is 396.26 gal, allowing extended intervals between fuel and water resupply. For purchasing details, contact Andrey Shestakov at Shestakov Yacht Sales.

Owner Experience Review

Owners of the BERING 65 typically operate it as an owner captained, liveaboard passagemaker. Documented transocean deliveries in the 8,000–10,000 nm range reflect its displacement-oriented brief, and many owners praise the steel hull for calm behavior in severe weather — with some reports of typhoon force encounters producing cosmetic impacts rather than structural failure. On passage the yacht maintains a steady 8–10 knot pace; responsiveness in acceleration and tactical turning is deliberate, and stopping or turning distances are longer than those of semi displacement or planing designs.

Interior accommodations are often highlighted for delivering generous volume for a 65' owner operator platform: a full beam forward master plus two guest cabins, a galley noted for ample storage and logical workflow, and flexible aft/upper deck arrangements—some versions include large windows that increase natural light. Crew quarters are compact but functional for a captain and deckhand team, and the engine room consistently receives positive feedback for access and system redundancy (twin engines, dual generators, and duplicated systems). The steel build enhances durability but brings elevated long term maintenance and corrosion control compared with GRP;

forums and broker commentary mention finish or fitting deterioration on some older examples, and the semi custom construction process at Bering Yachts has, in a number of cases, resulted in longer-than-expected build schedules and occasional contract or project disputes.

Pros and Cons

- Capable long-range expedition cruising, with owner-delivered passages reported at 8,000–10,000 nm.
- Outstanding seakeeping from the steel full-displacement hull, with accounts of typhoon-force survival resulting primarily in cosmetic damage.
- Well-considered systems access and redundancy in the engine room, including twin engines, dual generators, and duplicated systems tailored to owner-operators.
- Displacement hull emphasizes an 8–10-knot cruise, producing slow acceleration and extended stopping/turning distances.
- Steel construction demands proactive corrosion control and typically higher long-term maintenance compared with GRP hulls.
- Semi-custom builds can experience prolonged delivery timelines and, in some instances, yard/contract disputes or used-boat fit-and-finish complaints.

Comparison with Other Models

Model	LOA	Beam	Draft	Speed (Cruising/Max)	Gross Tonnage
BERING 65	64' 0" (19.78 m)	19' 0" (6 m)	5' 9" (1.75 m)	8 kn / 10 kn	
Bering 92	95' 0" (29 m)	22' 0" (6.74 m)	6' 1" (1.85 m)	9 kn / 12 kn	183
BERING 76	76' 0" (23.24 m)	19' 0" (5.89 m)	21' 1" (6.42 m)	9 kn / 11.5 kn	

BERING 88	86' 0" (26.20 m)	26' 0" (8.10 m)	7' 10" (2.40 m)	8.5 kn / 10.5 kn	230
BC80	78' 0" (24 m)				
BERING 70	73' 0" (22.40 m)	18' 0" (5.56 m)	14' 3" (4.33 m)	8 kn / 10 kn	74
B60	60' 0" (18.30 m)	18' 0" (5.70 m)	5' 11" (1.80 m)	8 kn / 10 kn	
Explorer Yacht B88	86' 0" (26.20 m)	26' 0" (8.10 m)	7' 10" (2.40 m)	8.5 kn / 10.5 kn	230
Classic Explorer Yacht B72	72' 0" (22.10 m)	21' 0" (6.40 m)	19' 11" (6.08 m)	8 kn / 10 kn	120
EXPEDITION CATAMARAN BC60	60' 0" (18.29 m)	28' 0" (8.60 m)	3' 7" (1.10 m) – 4' 7" (1.40 m)	10 kn / 14 kn	109.7

SPECIFICATIONS

LOA:

64' 0" (19.78 m)

Max Draft:

5' 9" (1.75 m)

Cruise Speed:

8 kn / 9.21 mph

Water Capacity:

396.26 Gallons

Hull Material:

Steel Yachts

Hull Configuration:

Monohull

Engines:

2

Engine Type:

Inboard

Beam:

19' 0" (6 m)

Max Speed:

10 kn / 11.51 mph

Fuel Capacity:

4490.92 Gallons

Deck Material:

Steel

Hull Designer:

BERING YACHTS

Manufacturer:

Cummins

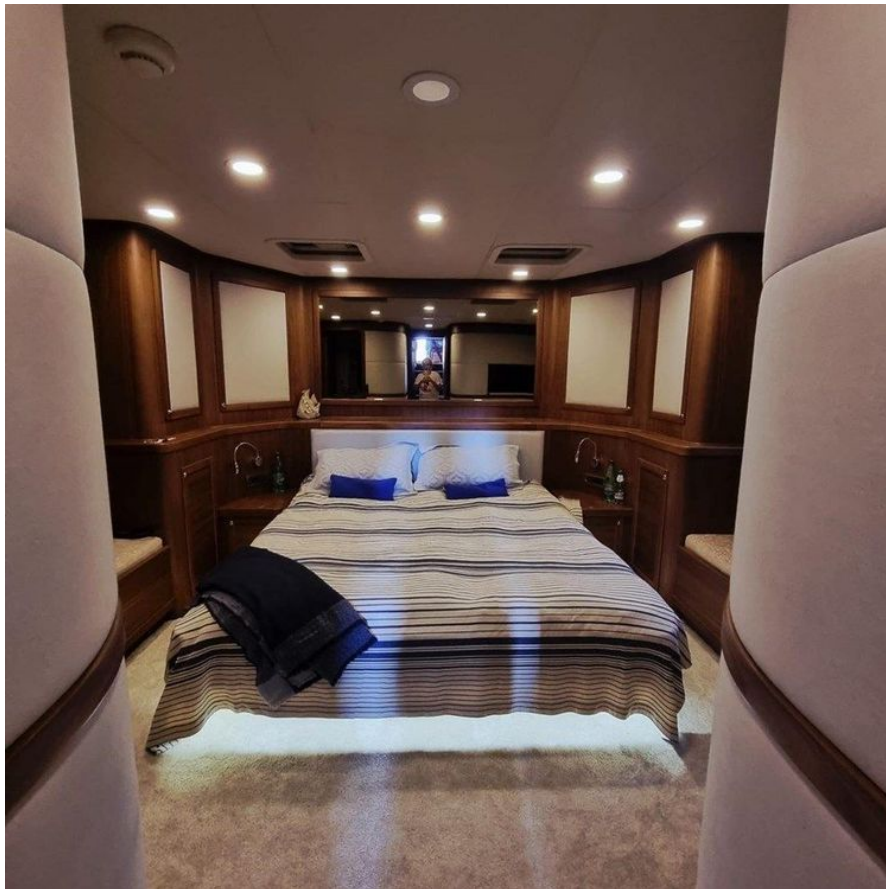
Fuel Type:

Diesel

GALLERY











CONTACTS

Shestakov Yacht Sales is a brokerage company specializing in the sale and service of yachts worldwide. The company offers services for buying and selling both new and used motor yachts, sailing vessels, and luxury superyachts. They also provide yacht registration, insurance, technical maintenance, crew selection, and charter organization services across the U.S., Canada, Latin America, the Caribbean, and the Bahamas.

The founder and lead broker of the company is Andrey Shestakov, a licensed and certified expert with extensive experience in marine engineering and shipbuilding.

The company has an extensive network of partnerships with major yacht manufacturers worldwide and provides services in multiple languages, including Russian, Ukrainian, Spanish, and English. The office is in Dania Beach, Florida, USA.

For more information and to view available yachts, you can visit the company's official website: <https://shestakovyachtsales.com>

Contact details

Phone: +1(954)274-4435

Email: andrey@shestakovyachtsales.com

Address



1380 Weeping Willow Way, Hollywood,
Florida 33019