



SHESTAKOV

Yacht Sales

## 28 FLYBRIDGE - BERTRAM YACHT



**Builder:**

Bertram Yacht

**Model:**

28 Flybridge

**LOA:**

28' 0" (8.53 m)

**Beam:**

11' 0" (3.35 m)

**Max Draft:**

8' 9" (2.67 m)

**Water Capacity:**

54 Gallons

**Fuel Capacity:**

425 Gallons

**Total Heads:**

1

**Hull Material:**

Fiberglass and Plastic Yachts

**Deck Material:**

Fiberglass

**Engines:**

2

**Manufacturer:**

Crusader

If you would like to buy a yacht **28 FLYBRIDGE - Bertram Yacht** or would like help, please call +1(954)274-4435 or visit [shestakovyachtsales.com](http://shestakovyachtsales.com)

---

# TABLE OF CONTENTS

---

<b>OVERVIEW .....</b>	<b>3</b>
<b>Selecting a 28 Flybridge .....</b>	<b>3</b>
<b>Features of the Model .....</b>	<b>3</b>
<b>Technical Specifications .....</b>	<b>3</b>
<b>Pricing and Ordering .....</b>	<b>4</b>
<b>Questions and Answers .....</b>	<b>4</b>
<b>Owner Experience Review .....</b>	<b>5</b>
<b>Pros and Cons .....</b>	<b>6</b>
<b>Comparison with Other Models .....</b>	<b>6</b>
<b>SPECIFICATIONS .....</b>	<b>7</b>
<b>GALLERY .....</b>	<b>8</b>
<b>CONTACTS .....</b>	<b>13</b>

## OVERVIEW

---

The 28 Flybridge from Bertram Yacht is a compact motor yacht purpose-built as a sport-fishing platform and features a sturdy fiberglass hull. This model is offered by Andrey Shestakov and the specialists at Shestakov Yacht Sales.

### Selecting a 28 Flybridge

---

If your brief calls for a 28-foot yacht with twin inboard gasoline propulsion, comfortable sleeping for four, and manageable upkeep, the 28 Flybridge merits serious consideration. Andrey Shestakov and the Shestakov Yacht Sales team will assist you in assessing suitability, scheduling inspections, and navigating the acquisition process for the 28 Flybridge.

### Features of the Model

---

- Twin inboard power: 2 x Crusader engines (Gas)
- Dimensions optimized for versatility: LOA 28 ft (8.53 m), beam 11 ft (3.35 m), max draft 8.749 ft (2.6666 m)
- Construction: fiberglass construction hull; deck in Fiberglass
- Layout essentials: accommodations for 4 and 1 head
- Capacities for longer days on the water: fuel 425 gal; water 54 gal
- Classification: a motor yacht designed as a sport fisherman

### Technical Specifications

---

- Model: 28 Flybridge
- Builder: Bertram Yacht
- LOA: 28 ft (8.53 m)

- Beam: 11 ft (3.35 m)
- Max Draft: 8.749 ft (2.6666 m)
- Engines: 2 x Crusader, Inboard, Gas
- Hull: fiberglass and plastic
- Deck: Fiberglass
- Accommodations: 4
- Heads: 1
- Fuel Capacity: 425 gal
- Water Capacity: 54 gal

## Pricing and Ordering

---

For up-to-date pricing, current availability, or assistance listing or purchasing a 28 Flybridge, contact Andrey Shestakov and the brokerage professionals at Shestakov Yacht Sales. We will arrange inspections, handle offer negotiations, and guide you through the closing steps for a 28 Flybridge.

## Questions and Answers

---

Q: What type of yacht is the 28 Flybridge? A: **Type:** a motor yacht configured as a sport fisherman with a **hull** in fiberglass.

Q: Who is the builder of this model? A: **Builder:** Bertram Yacht.

Q: What powers the boat and what fuel does it use? A: **Engines:** 2 x Crusader; **Configuration:** Inboard; **Fuel:** Gas.

Q: What are the principal dimensions and capacities? A: **LOA:** 28 ft (8.53 m); **Beam:** 11 ft (3.35 m); **Max draft:** 8.749 ft (2.6666 m); **Fuel capacity:** 425 gal; **Water capacity:** 54 gal; **Accommodations:** 4; **Heads:**

Q: How do I buy or list a 28 Flybridge? A: Reach out to **Andrey Shestakov** at

**Shestakov Yacht Sales** for **pricing** , **availability** , and next steps on inspections and offers.

## Owner Experience Review

---

Owners who fish offshore commonly praise the 28 Flybridge from Bertram Yacht as an exceptional platform for angling. The deep V hull is frequently cited for its seaworthiness and for “handling like a much larger boat” in both chop and swell, although some proprietors report occasional snap or rocking in particular sea conditions. Many owners also use these boats for weekend trips and short island hops, reflecting a solid mix of fishing performance and family-oriented functionality.

Within the cabin, reviewers consistently note a practical and efficient layout: sleeping for four achieved with a convertible dinette, a compact but capable galley, and an enclosed head with shower. Owners emphasize the interior feels roomy for a 28-footer and is well-suited to family cruising and overnight stays. The flybridge contributes a second helm and additional sociable deck space, improving sightlines and broadening the boat’s utility for dayboating.

Underway performance reported by owners typically falls around 20–24 knots, varying with the boat’s age and installed engines. The vessel is relatively heavy for its length (approximately 12,000 lb fully loaded), a factor many owners link to increased fuel consumption. Maintenance conversations frequently highlight fiberglass fuel tanks being at risk from ethanol blend gasoline, and unrestored boats often exhibit age-related rot in stringers and the transom. Engine repowers and swaps are common, eased by generally good to excellent engine room access. Many buyers approach the 28 Flybridge as a capable “project boat,” budgeting inspections, fuel tank work, and mechanical upgrades; condition varies significantly with vintage and previous care.

## Pros and Cons

- Seaworthy deep V ride that handles chop like a larger boat.
- Widely regarded by owners as one of the best offshore fishing platforms in its class.
- Practical cabin with berths for four, an enclosed head, and a small but efficient galley for weekend use.
- Heavy for its size (around 12,000 lb loaded), leading to higher fuel burn.
- Fiberglass fuel tanks can be vulnerable to ethanol blend gasoline and often warrant inspection or replacement.
- Unrestored examples frequently show age related rot in stringers and the transom.

## Comparison with Other Models

Model	LOA	Beam	Draft	Speed (Cruising/Max)	Gross Tonnage
28 Flybridge	28' 0" (8.53 m)	11' 0" (3.35 m)	8' 9" (2.67 m)		
58 Motor Yacht	58' 0" (17.68 m)	18' 0" (5.49 m)	17' 9" (5.42 m)		
510 Convertible	51' 0" (15.54 m)	16' 0" (5.16 m)			
51 Convertible	51' 0" (15.54 m)	16' 0" (4.93 m)	16' 5" (5 m)		
28 Sport Fish	28' 0" (8.53 m)	11' 0" (3.35 m)	8' 9" (2.67 m)	19 kn / 28 kn	
60 Convertible	60' 0" (18.29 m)				
570	57' 0" (17.37 m)	17' 0" (5.16 m)	5' 3" (1.60 m)		
50	50' 0" (15.24 m)			36 kn / 46 kn	
25	25' 0" (7.62 m)	9' 0" (3.02 m)	8' 9" (2.67 m)		
670	67' 0" (20.42 m)	18' 0" (5.77 m)			

# SPECIFICATIONS

---

**LOA:**

28' 0" (8.53 m)

**Max Draft:**

8' 9" (2.67 m)

**Water Capacity:**

54 Gallons

**Total Heads:**

1

**Hull Material:**

Fiberglass and Plastic Yachts

**Engines:**

2

**Engine Type:**

Inboard

**Beam:**

11' 0" (3.35 m)

**Fuel Capacity:**

425 Gallons

**Deck Material:**

Fiberglass

**Manufacturer:**

Crusader

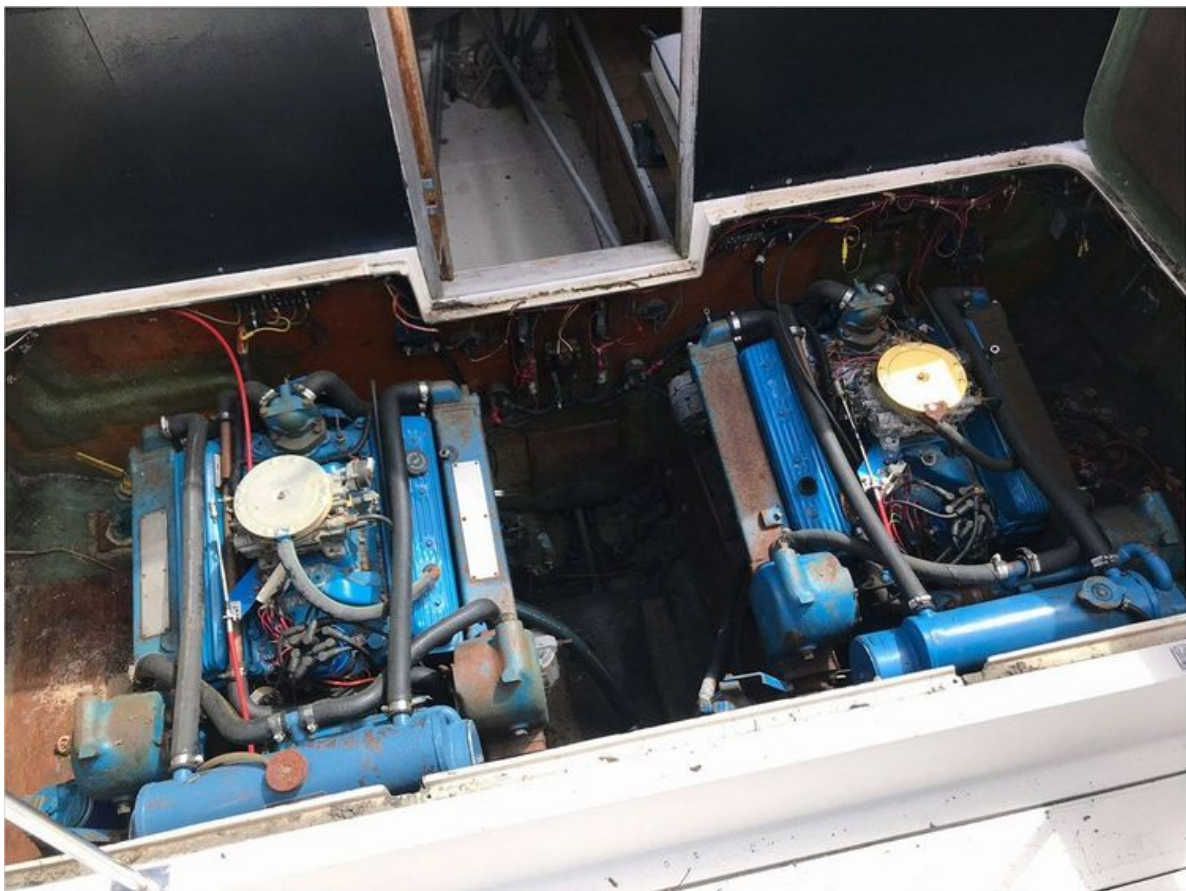
**Fuel Type:**

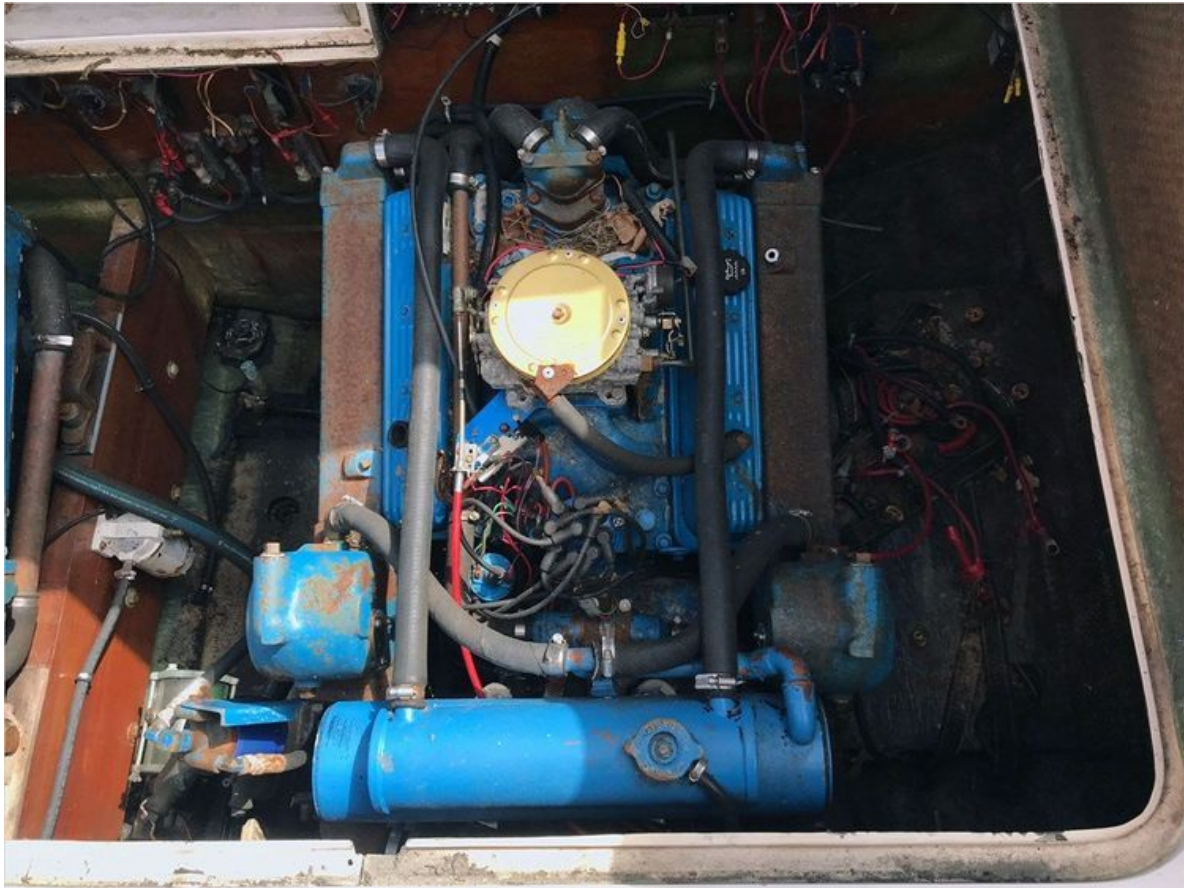
Gas

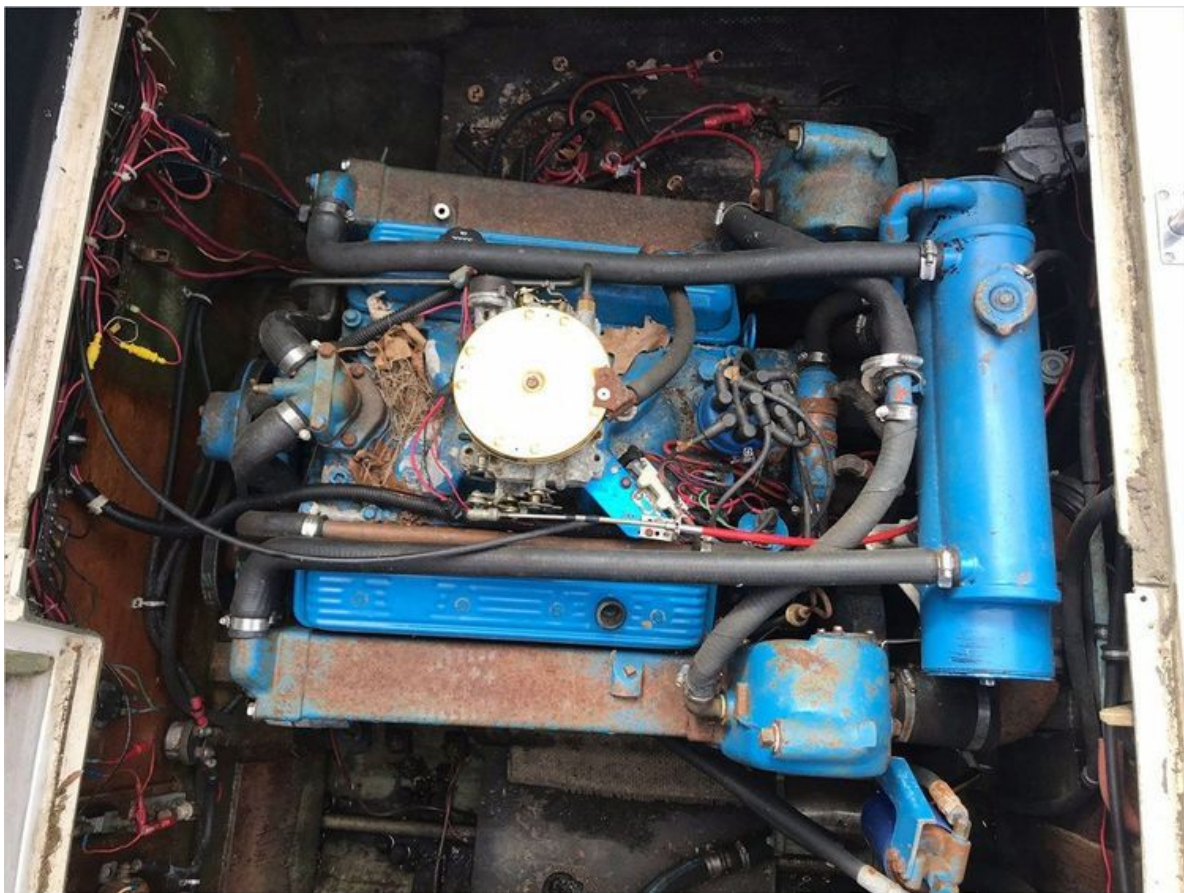
# GALLERY











# CONTACTS

---

Shestakov Yacht Sales is a brokerage company specializing in the sale and service of yachts worldwide. The company offers services for buying and selling both new and used motor yachts, sailing vessels, and luxury superyachts. They also provide yacht registration, insurance, technical maintenance, crew selection, and charter organization services across the U.S., Canada, Latin America, the Caribbean, and the Bahamas.

The founder and lead broker of the company is Andrey Shestakov, a licensed and certified expert with extensive experience in marine engineering and shipbuilding.

The company has an extensive network of partnerships with major yacht manufacturers worldwide and provides services in multiple languages, including Russian, Ukrainian, Spanish, and English. The office is in Dania Beach, Florida, USA.

For more information and to view available yachts, you can visit the company's official website: <https://shestakovyachtsales.com>

## Contact details

---

**Phone:** +1(954)274-4435

**Email:** [andrey@shestakovyachtsales.com](mailto:andrey@shestakovyachtsales.com)

## Address

---



1380 Weeping Willow Way, Hollywood,  
Florida 33019