



SHESTAKOV

Yacht Sales

## 37 WACC - BONADEO BOATWORKS



**Builder:**

BONADEO BOATWORKS

**Model:**

37 WACC

**LOA:**

37' 0" (11.28 m)

**Beam:**

10' 0" (3.05 m)

**Max Draft:**

6' 7" (2 m)

**Cruise Speed:**

40 kn / 46.03 mph

**Max Speed:**

60 kn / 69.05 mph

**Water Capacity:**

50 Gallons

**Fuel Capacity:**

400 Gallons

**Total Heads:**

1

**Hull Material:**

Fiberglass and Plastic Yachts

**Deck Material:**

Composite

If you would like to buy a yacht **37 WACC - BONADEO BOATWORKS** or would like help, please call +1(954)274-4435 or visit [shestakovyachtsales.com](http://shestakovyachtsales.com)

---

# TABLE OF CONTENTS

---

<b>OVERVIEW .....</b>	<b>3</b>
<b>Selecting a 37 WACC .....</b>	<b>3</b>
<b>Features of the Model .....</b>	<b>3</b>
<b>Technical Specifications .....</b>	<b>4</b>
<b>Pricing and Ordering .....</b>	<b>4</b>
<b>Questions and Answers .....</b>	<b>4</b>
<b>Owner Experience Review .....</b>	<b>5</b>
<b>Pros and Cons .....</b>	<b>6</b>
<b>Comparison with Other Models .....</b>	<b>6</b>
<b>SPECIFICATIONS .....</b>	<b>7</b>
<b>GALLERY .....</b>	<b>8</b>
<b>CONTACTS .....</b>	<b>13</b>

## OVERVIEW

---

The 37 WACC from BONADEO BOATWORKS is a performance-oriented motor yacht laid out as a center console. It rides on a fiberglass hull with a composite deck and is propelled by triple Mercury gas outboards, delivering a typical cruise of 40 knots (46.03 mph) and a top end near 60 knots (69.05 mph). For acquisition and ownership assistance, contact Shestakov Yacht Sales and broker Andrey Shestakov.

## Selecting a 37 WACC

---

Opting for the 37-foot WACC is sensible if your priorities include high-speed performance, unobstructed deck flow, and uncomplicated systems. With a 10 ft beam and a maximum draft of 6.562 ft (2 m), the 37 WACC delivers a balance of speed and handling within practical dimensions suitable for a range of conditions. Reach out to Andrey Shestakov at Shestakov Yacht Sales to see how this model aligns with your needs.

## Features of the Model

---

- Purpose-built motor yacht arranged in a flexible center console layout
- fiberglass construction paired with a composite deck for an efficient strength-to-weight ratio
- Triple Mercury outboards; **engine type : Outboard ; fuel : Gas**
- Performance headline: **Cruising speed** 40 kn (46.03 mph); **Maximum speed** 60 kn (69.05 mph)
- Practical onboard provisions including **1 head** , **400 gal** fuel capacity, and **50 gal** freshwater capacity

## Technical Specifications

---

- Length overall (LOA): 37 ft (11.28 m)
- Beam: 10 ft (3.05 m)
- Draft (max): 6.562 ft (2 m)
- Speed (cruise): 40 kn (46.03 mph)
- Speed (max): 60 kn (69.05 mph)
- Engines: 3 × Mercury, **Outboard , Gas**
- Hull: fiberglass
- Deck: Composite
- Heads: 1
- Water capacity: 50 gal
- Fuel capacity: 400 gal

## Pricing and Ordering

---

To obtain up-to-date pricing, check availability, or arrange next steps for ordering the 37 WACC from BONADEO BOATWORKS, please contact Andrey Shestakov at Shestakov Yacht Sales. Our brokerage team will schedule viewings and assist you through selection, survey, and delivery coordination.

## Questions and Answers

---

- What type of yacht is the 37 WACC? It is a motor yacht built in a center console format on a fiberglass hull foundation.
- How fast does it go? The vessel typically cruises at 40 knots (46.03 mph) and can achieve a **maximum speed** of about 60 knots (69.05 mph).
- What powers the boat? Propulsion comes from three **Mercury Outboard** engines fueled by **Gas** .
- What are the key dimensions? Overall length ( **LOA** ) is 37 ft (11.28 m), **Beam**

measures 10 ft (3.05 m), and **Draft (max)** is 6.562 ft (2 m).

- What capacities and amenities does it have? The boat carries **400 gal** of fuel, **50 gal** of fresh water, and includes **1 head** . For inspections and further details, contact Andrey Shestakov at Shestakov Yacht Sales.

## Owner Experience Review

---

Because the 37 WACC is produced in limited numbers, there are relatively few public owner-to-owner discussions; most practical knowledge comes from broker advertisements and commentary by the builder and industry experts. Even with that limited direct-owner feedback, the consensus paints the boat as a swift, assured walkaround that straddles family-friendly day use and serious offshore fishing capability, while also functioning well as a high-performance dayboat or a tender for larger yachts.

When fitted with triple Mercury outboards, owners commonly report a cruise near 40 knots with peak speeds approaching 60 knots. Acceleration and throttle response are described as immediate, with strong punch from the powertrain, while the hull is said to remain composed and well-planted—qualities that give the helmsman confidence in choppy conditions.

Deck ergonomics favor continuous fore-to-aft circulation, dedicated lounging spaces, and a helm designed for clean sightlines and operational simplicity, making the layout both practical and safe. Beneath the console is a properly equipped head and a 50-gallon freshwater tank; exterior and interior finishes reflect BONADEO BOATWORKS' boutique sensibility with neat joinery and quality surfaces. From a maintenance standpoint, outboards simplify physical access, but having three high-horsepower units increases recurring service expenses and adds rigging complexity compared with single- or twin-engine arrangements; routine dealer service that costs in the low- to mid-hundreds

for a large Verado will multiply across all three engines.

## Pros and Cons

---

- High-performance capability with rapid throttle response, commonly cruising near 40 knots and nearing 60 knots top speed.
- A planted, composed ride that instills confidence for the driver in chop.
- Flexible walkaround configuration with a clear helm and comfortable lounging, suitable for family outings, offshore fishing, and serving as a tender.
- Triple outboards increase annual service costs compared with single or twin-engine installations.
- Three-engine rigging adds additional parts and labor time versus simpler propulsion setups.
- Limited long-term owner-report data because of low production; most available insights originate from listings and expert commentary.

## Comparison with Other Models

---

Model	LOA	Beam	Draft	Speed (Cruising/Max)	Gross Tonnage
37 WACC	37' 0" (11.28 m)	10' 0" (3.05 m)	6' 7" (2 m)	40 kn / 60 kn	
34 Cuddy	34' 0" (10.36 m)	9' 0" (3 m)	6' 0" (1.83 m)	30 kn / 45 kn	

# SPECIFICATIONS

---

**LOA:**

37' 0" (11.28 m)

**Max Draft:**

6' 7" (2 m)

**Cruise Speed:**

40 kn / 46.03 mph

**Water Capacity:**

50 Gallons

**Total Heads:**

1

**Hull Material:**

Fiberglass and Plastic Yachts

**Engines:**

3

**Engine Type:**

Outboard

**Beam:**

10' 0" (3.05 m)

**Max Speed:**

60 kn / 69.05 mph

**Fuel Capacity:**

400 Gallons

**Deck Material:**

Composite

**Manufacturer:**

Mercury

**Fuel Type:**

Gas

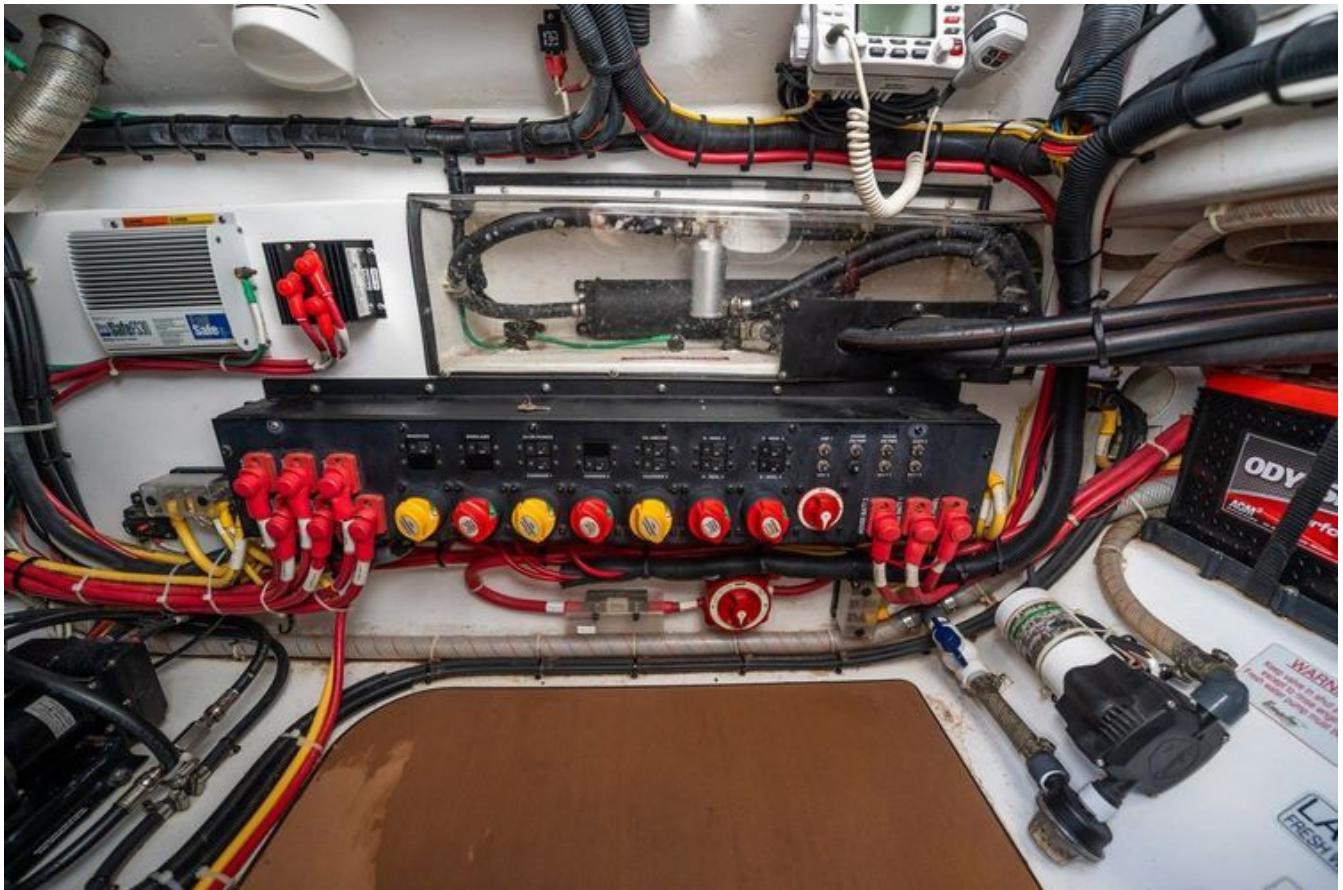
# GALLERY











# CONTACTS

---

Shestakov Yacht Sales is a brokerage company specializing in the sale and service of yachts worldwide. The company offers services for buying and selling both new and used motor yachts, sailing vessels, and luxury superyachts. They also provide yacht registration, insurance, technical maintenance, crew selection, and charter organization services across the U.S., Canada, Latin America, the Caribbean, and the Bahamas.

The founder and lead broker of the company is Andrey Shestakov, a licensed and certified expert with extensive experience in marine engineering and shipbuilding.

The company has an extensive network of partnerships with major yacht manufacturers worldwide and provides services in multiple languages, including Russian, Ukrainian, Spanish, and English. The office is in Dania Beach, Florida, USA.

For more information and to view available yachts, you can visit the company's official website: <https://shestakovyachtsales.com>

## Contact details

---

**Phone:** +1(954)274-4435

**Email:** [andrey@shestakovyachtsales.com](mailto:andrey@shestakovyachtsales.com)

## Address

---



1380 Weeping Willow Way, Hollywood,  
Florida 33019