



SHESTAKOV

Yacht Sales

35' FLYBRIDGE SPORTFISH – CABO YACHTS



Builder:

Cabo Yachts

Model:

35' Flybridge Sportfish

LOA:

35' 0" (10.67 m)

Beam:

13' 0" (3.96 m)

Water Capacity:

100 Gallons

Fuel Capacity:

400 Gallons

Total Heads:

1

Hull Material:

Fiberglass and Plastic Yachts

Deck Material:

Fiberglass

Engines:

2

Manufacturer:

Cummings

Engine Type:

Inboard

If you would like to buy a yacht **35' FLYBRIDGE SPORTFISH – Cabo Yachts** or would like help, please call +1(954)274-4435 or visit shestakovyachtsales.com

TABLE OF CONTENTS

OVERVIEW	3
Selecting a 35’ Flybridge Sportfish	3
Features of the Model	3
Technical Specifications	4
Pricing and Ordering	4
Questions and Answers	4
Owner Experience Review	5
Pros and Cons	6
Comparison with Other Models	7
SPECIFICATIONS	8
GALLERY	9
CONTACTS	14

OVERVIEW

Designed by Cabo Yachts, the 35' Flybridge Sportfish is a robust motor yacht tailored to the sport fisherman market, constructed on a time-tested fiberglass and plastic hull. Shestakov Yacht Sales, under broker Andrey Shestakov, stands ready to assist you throughout the buying process from selection to closing.

Selecting a 35' Flybridge Sportfish

Opting for the 35' Flybridge Sportfish prioritizes a capable platform that balances tournament-level fishing performance with comfortable cruising. At 35 ft (10.67 m) LOA and a 13 ft (3.96 m) beam, it provides a footprint that's straightforward to handle while still offering useful interior and deck volume. Twin inboard diesels from Cummings deliver dependable propulsion across a variety of sea states. If you want a compact, competition-ready sport fisherman that also functions as a versatile motor yacht, Andrey Shestakov and the team at Shestakov Yacht Sales can pair this model with your intended use and schedule.

Features of the Model

- Twin inboard diesel propulsion: 2 x Cummings, combining **Diesel** efficiency with **Inboard** reliability.
- Purpose-built category mix: a true motor yacht engineered for sport fisherman pursuits.
- Durable construction: a fiberglass and plastic hull with a Fiberglass deck for strength and serviceability.
- Practical layout fundamentals: one head and generous tankage tuned for weekend runs and extended fishing days.
- Manageable proportions: 35 ft LOA and 13 ft beam strike a smart balance of

agility and stability.

Technical Specifications

- Builder: Cabo Yachts
- Model: 35' Flybridge Sportfish
- Category: motor yacht
- Subcategory: sport fisherman
- Hull: fiberglass and plastic
- Deck: Fiberglass
- LOA: 35 ft (10.67 m)
- Beam: 13 ft (3.96 m)
- Engines: 2 x Cummings
- Engine type: Inboard
- Fuel type: Diesel
- Heads: 1
- Fuel capacity: 400 gal
- Water capacity: 100 gal

Pricing and Ordering

Pricing and availability for the 35' Flybridge Sportfish depend on current market dynamics and the specific options chosen. Contact Andrey Shestakov at Shestakov Yacht Sales to explore inventory, schedule viewings, and review configurations. Our brokerage handles inspections, paperwork, and delivery logistics to move you from offer to handover efficiently.

Questions and Answers

Q: What type of yacht is the 35' Flybridge Sportfish? A: It's a flexible motor

yacht built for the sport fisherman role, laid on a sturdy fiberglass and plastic hull.

Q: What is the engine setup and fuel? A: The boat is fitted with 2 x Cummings engines in an **Inboard** arrangement running on **Diesel** , providing strong torque and operational economy.

Q: What are the key dimensions? A: **LOA** measures 35 ft (10.67 m) and **Beam** is 13 ft (3.96 m), giving a stable, easy-to-handle platform for fishing trips and cruising.

Q: What are the tank capacities and onboard facilities? A: **Fuel capacity** is 400 gal and **Water capacity** is 100 gal, with 1 **head** available for offshore comfort.

Q: How do I purchase through Shestakov Yacht Sales? A: Reach out to Andrey Shestakov. We will match you with appropriate 35' Flybridge Sportfish listings from Cabo Yachts, coordinate inspections, **survey** , and **sea trial** , and oversee closing and delivery.

Owner Experience Review

Owners consistently describe the 35' Flybridge Sportfish from Cabo Yachts as a bona fide offshore sportfisher that remains useful for family weekends. The 130 sq ft cockpit, in-deck fishboxes and a tackle-oriented layout make tournament-style work straightforward, while the flybridge bench keeps passengers comfortable on day runs. Down below, the cabin space often feels larger than expected for a 35-footer, with two-cabin/one-head setups, options for an island berth and a convertible settee, and choices between mid-galley or galley-down arrangements.

On the water, feedback varies by model year. Owners of pre-2000 hulls typically report a wetter ride with occasional pounding in a head sea, whereas the hull revision introduced about 2000—with a finer entry and broader

chines—is credited with reducing spray and smoothing head-sea behavior. Normal cruise speeds fall in the low to mid 20s knots; one owner recorded 21 knots at 2150 RPM, and various owner reports and tests cite top speeds in the low 30s depending on engine selections.

Serviceability is often highlighted, thanks to a large gas-assisted salon hatch that provides expansive access to the machinery space. Common maintenance items on older examples include impellers, raw-water pumps, fish-box macerators, bilge pumps, cutlass bearings, shaft seals, fuel hoses and A/C components. Owners recommend keeping heat exchangers clean and avoiding extended periods at full throttle. Some owners with CAT 3208 installs have noted fiberglass muffler degradation, which should be checked during inspections.

Pros and Cons

- Large 130 sq ft cockpit and a layout focused on fishability make it well suited to offshore and tournament operations.
- The interior feels roomy for a 35-foot yacht, offering two-cabin/one-head configurations and a settee that converts to a double for weekend stays.
- Engine-room access through a substantial gas-assisted salon hatch simplifies routine maintenance.
- Early pre-2000 hull shapes are reported to be wet and susceptible to pounding in a head sea.
- Expect ongoing maintenance for pumps, macerators, cutlass bearings, shaft seals, fuel hoses and A/C parts on older vessels.
- Some CAT 3208 installations have shown deteriorating fiberglass mufflers, a known inspection item.

Comparison with Other Models

Model	LOA	Beam	Draft	Speed (Cruising/ Max)	Gross Tonnage
35' Flybridge Sportfish	35' 0" (10.67 m)	13' 0" (3.96 m)			
44 Gyro Stabilized HTX	44' 0" (13.41 m)	16' 0" (5.03 m)	11' 9" (3.58 m)		
44 HTX	44' 0" (13.41 m)	16' 0" (5 m)	11' 9" (3.58 m)	32 kn / 37 kn	
43 Flybridge	43' 0" (13.11 m)	15' 0" (4.60 m)	14' 3" (4.33 m)	26 kn / 35 kn	
Cable 40	40' 0" (12.19 m)				
35 Express	35' 0" (10.67 m)	13' 0" (3.96 m)	8' 2" (2.50 m)		
40	40' 0" (12.19 m)	15' 0" (4.70 m)		25 kn / 35 kn	
Convertible	47' 0" (14.33 m)	15' 0" (4.78 m)	13' 1" (4 m)	27 kn / 33 kn	
45	45' 0" (13.72 m)	15' 0" (4.78 m)	11' 6" (3.51 m)	27 kn / 35 kn	28
45 Express Los Suenos Edition	45' 0" (13.72 m)	15' 0" (4.78 m)	19' 8" (6 m)	27 kn / 40 kn	

SPECIFICATIONS

LOA:

35' 0" (10.67 m)

Water Capacity:

100 Gallons

Total Heads:

1

Hull Material:

Fiberglass and Plastic Yachts

Engines:

2

Engine Type:

Inboard

Beam:

13' 0" (3.96 m)

Fuel Capacity:

400 Gallons

Deck Material:

Fiberglass

Manufacturer:

Cummins

Fuel Type:

Diesel

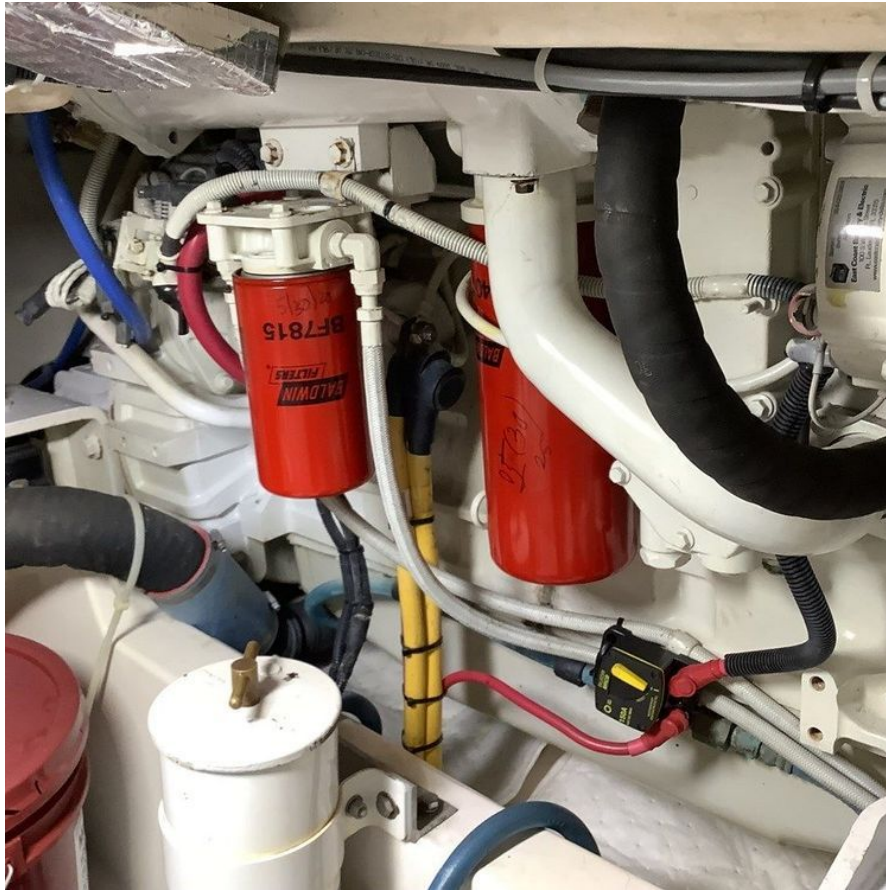
GALLERY











CONTACTS

Shestakov Yacht Sales is a brokerage company specializing in the sale and service of yachts worldwide. The company offers services for buying and selling both new and used motor yachts, sailing vessels, and luxury superyachts. They also provide yacht registration, insurance, technical maintenance, crew selection, and charter organization services across the U.S., Canada, Latin America, the Caribbean, and the Bahamas.

The founder and lead broker of the company is Andrey Shestakov, a licensed and certified expert with extensive experience in marine engineering and shipbuilding.

The company has an extensive network of partnerships with major yacht manufacturers worldwide and provides services in multiple languages, including Russian, Ukrainian, Spanish, and English. The office is in Dania Beach, Florida, USA.

For more information and to view available yachts, you can visit the company's official website: <https://shestakovyachtsales.com>

Contact details

Phone: +1(954)274-4435

Email: andrey@shestakovyachtsales.com

Address



1380 Weeping Willow Way, Hollywood,
Florida 33019