



SHESTAKOV

Yacht Sales

444 MOTOR YACHT – CARVER YACHTS



Builder:

Carver Yachts

Model:

444 Motor Yacht

LOA:

46' 0" (14.02 m)

Min Draft:

11' 6" (3.50 m)

Beam:

13' 0" (4 m)

Max Draft:

11' 6" (3.50 m)

Cruise Speed:

20 kn / 23.02 mph

Max Speed:

23 kn / 26.47 mph

Gross Tonnage:

33800 Pounds

Water Capacity:

90 Gallons

Fuel Capacity:

404 Gallons

Sleeps:

2

If you would like to buy a yacht **444 MOTOR YACHT – Carver Yachts** or would like help, please call +1(954)274-4435 or visit shestakovyachtsales.com

TABLE OF CONTENTS

OVERVIEW	3
Selecting a 444 Motor Yacht	3
Features of the Model	3
Technical Specifications	4
Pricing and Ordering	4
Questions and Answers	4
Owner Experience Review	5
Pros and Cons	6
Comparison with Other Models	6
SPECIFICATIONS	8
GALLERY	9
CONTACTS	14

OVERVIEW

Step aboard the 444 Motor Yacht from Carver Yachts—an airy motor yacht designed for relaxed coastal cruising and comfortable overnighting. Classified among adaptable cruisers and built on a resilient fiberglass and plastic foundation, this model is listed by Shestakov Yacht Sales with broker Andrey Shestakov representing the offer.

Selecting a 444 Motor Yacht

Opt for the 444 Motor Yacht when you prioritize twin-diesel reliability, manageable proportions for marina berths and anchorages, and onboard features that make weekends or extended voyages pleasant. Powered by two Volvo Penta diesels, with a 46 ft (14.02 m) LOA and a 13 ft (4 m) beam, this monohull delivers confident handling and practical accommodations, including two heads for guest comfort.

Features of the Model

- Twin-engine propulsion: Equipped with 2 Volvo Penta diesel engines to combine fuel economy with redundancy.
- Performance balance: Designed to cruise at 20 knots with a top capability around 23 knots for efficient passages.
- Construction and layout: A monohull hull form with a fiberglass deck and a sturdy fiberglass and plastic build.
- Onboard utility: Two heads provide added privacy and convenience for crew and guests.
- Capacities for cruising: Substantial tanks — 404 gal of fuel and 90 gal of fresh water — support longer time between resupply.

Technical Specifications

- Length overall (LOA): 46 ft (14.02 m)
- Beam: 13 ft (4 m)
- Draft (approx.): 11.483 ft (3.5 m)
- Hull configuration: Monohull
- Hull material: fiberglass and plastic
- Deck material: Fiberglass
- Engines: 2 x Volvo Penta
- Fuel type: Diesel
- Cruising speed: 20 kn (23.02 mph)
- Maximum speed: 23 kn (26.47 mph)
- Heads: 2
- Fuel capacity: 404 gal
- Fresh water capacity: 90 gal

Pricing and Ordering

For current pricing, availability, and options to purchase or customize the 444 Motor Yacht from Carver Yachts, contact Shestakov Yacht Sales. Broker Andrey Shestakov is available to assist with yacht selection, offer preparation, contract negotiation, surveys, sea trials, and delivery coordination.

Questions and Answers

- What powers the 444 Motor Yacht? The yacht is fitted with **2 Volvo Penta diesel** engines, delivering dependable twin-engine propulsion under the Carver Yachts name.
- What are the **cruising** and **top speeds** of the 444 Motor Yacht? The **cruising speed** is 20 kn (23.02 mph), and the **top speed** is 23 kn (26.47 mph), providing

efficient transit and timely passages.

- What are the key **dimensions** of the boat? The 444 Motor Yacht measures **46 ft (14.02 m) LOA** , features a **13 ft (4 m) beam** , and has an approximate **draft of 11.483 ft (3.5 m)** .
- What onboard **capacities** support longer trips? The vessel carries a **fuel capacity of 404 gal** , a **fresh water capacity of 90 gal** , and includes **two heads** , enabling extended cruises aboard the 444 Motor Yacht.
- How do I start the **purchase process** with Shestakov Yacht Sales? Contact Shestakov Yacht Sales—broker **Andrey Shestakov** will manage the details for the 444 Motor Yacht by Carver Yachts, including inspections, negotiations, and the **ordering** process.

Owner Experience Review

Owners commonly describe the 444 Motor Yacht by Carver Yachts as a highly adaptable cruiser: it's used for weekend escapes, longer coastal passages, and as a liveaboard platform for couples, with many reports noting Great Loop and Bahamas adventures. The interior is frequently highlighted for its exceptionally large, full-beam salon with sweeping windows and two similarly sized staterooms that maintain privacy; one owner summed it up as "very roomy."

While underway, owners and reviewers praise its gentle, assured handling in chop, a trait attributed to the solid fiberglass hull. Reports from vessels with Volvo TAMD engines cite an easy cruise of around ~16 knots at roughly 2400 rpm, while performance tests have recorded approximately 23–25.9 knots at wide open throttle. At the dock, many note a tendency for the bow to ride low when the vessel is lightly loaded, a condition typically managed by careful fuel and water distribution.

Maintenance discussions among owners often center on legacy fiberglass wet-exhaust components: multiple accounts describe failures and subsequent

water intrusion, and there have been conversations around a Carver/CG recall affecting some boats. Owners commonly recommend checking recall records and considering stainless replacements or comprehensive system upgrades. Access to the engine room is through the saloon sole, and while most routine items are accessible, Racor filters located outboard/forward can be awkward to reach. Community advice also emphasizes periodic checks of V-band clamps, upgrading to stainless elbows with relocated water injection, fitting bilge water-level sensors and pumps in the engine compartment, and monitoring bow-thruster electrical isolators, which some owners flag as a potential fire concern.

Pros and Cons

- Very large full-beam salon with panoramic windows supports comfortable liveaboard use and extended cruising.
- Soft, confident entry into chop from the solid fiberglass bottom enhances comfort underway.
- Versatile usage profile proven by weekend cruising, Great Loop/Bahamas passages, and couples living aboard.
- Pronounced bow-heavy feel at the dock or when lightly loaded requires attentive tank management.
- Historic fiberglass wet-exhaust and muffler issues warrant inspection, recall verification, and potential stainless replacements.
- Galley layout is efficient but some owners note limited counter space.

Comparison with Other Models

Model	LOA	Beam	Draft	Speed (Cruising/Max)	Gross Tonnage
444 Motor Yacht	46' 0" (14.02 m)	13' 0" (4 m)	11' 6" (3.50 m)	20 kn / 23 kn	33800

36 Aft Cabin Motoryacht	35' 0" (10.77 m)	12' 0" (3.76 m)		7.5 kn	
43C	43' 0" (13.11 m)	13' 0" (4.22 m)	11' 9" (3.58 m)	28 kn / 33 kn	
C52 Command Bridge	52' 0" (15.85 m)	15' 0" (4.78 m)	14' 3" (4.33 m)	16.4 kn / 31 kn	
Santego 3067	34' 0" (10.36 m)	11' 0" (3.35 m)			
570 Voyager Pilot House	57' 0" (17.37 m)	15' 0" (4.70 m)	14' 9" (4.50 m) – 16' 5" (5 m)	23 kn / 28 kn	51
380 Express	38' 0" (11.58 m)	13' 0" (3.96 m)			
530 Voyager Pilothouse	53' 0" (16.15 m)	15' 0" (4.67 m)	15' 7" (4.75 m)		
360 Mariner	36' 0" (11.12 m)	12' 0" (3.89 m)	10' 1" (3.08 m)		
396 Aft Cabin MY	40' 0" (12.37 m)	13' 0" (4.24 m)	11' 6" (3.50 m)		

SPECIFICATIONS

LOA:

46' 0" (14.02 m)

Beam:

13' 0" (4 m)

Cruise Speed:

20 kn / 23.02 mph

Gross Tonnage:

33800 Pounds

Fuel Capacity:

404 Gallons

Sleeps:

2

Hull Material:

Fiberglass and Plastic Yachts

Hull Configuration:

Monohull

Engines:

2

Fuel Type:

Diesel

Min Draft:

11' 6" (3.50 m)

Max Draft:

11' 6" (3.50 m)

Max Speed:

23 kn / 26.47 mph

Water Capacity:

90 Gallons

Total Heads:

2

Deck Material:

Fiberglass

Manufacturer:

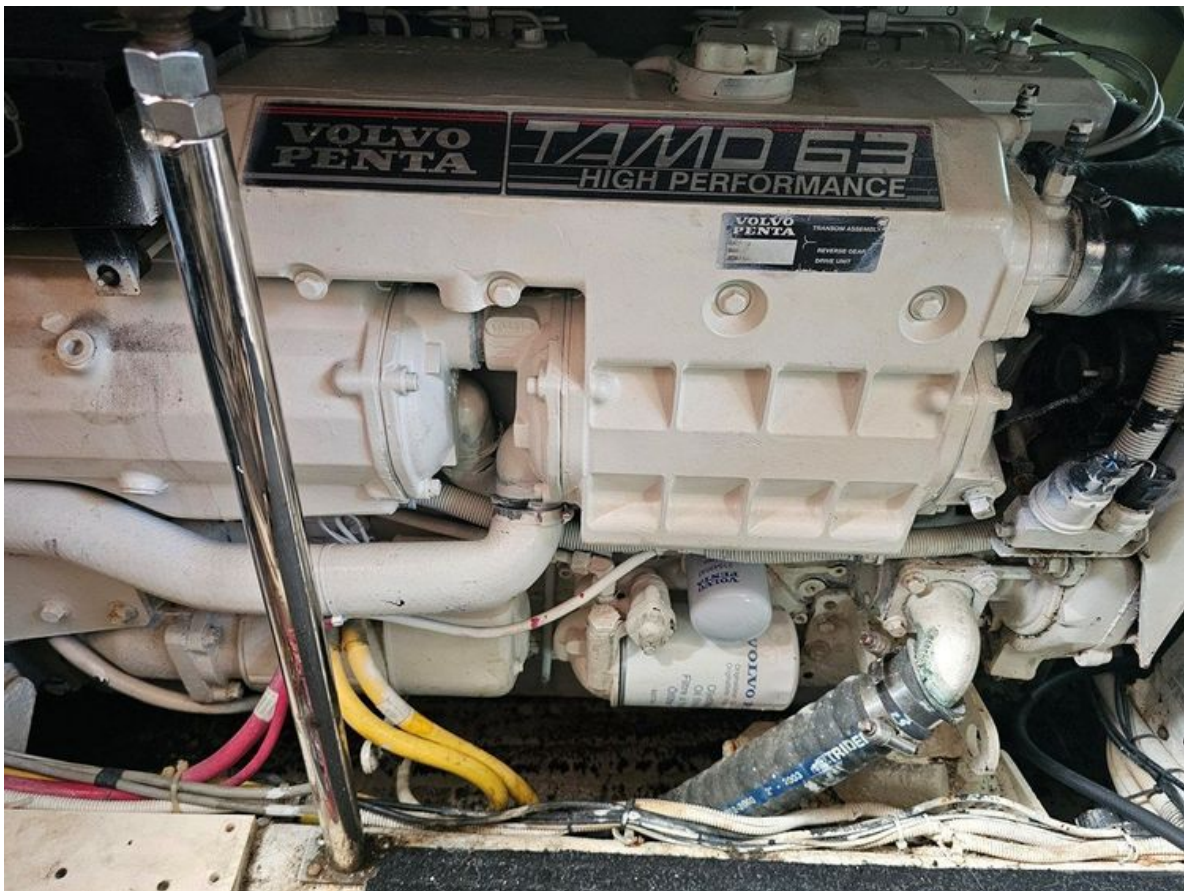
Volvo Penta

GALLERY











CONTACTS

Shestakov Yacht Sales is a brokerage company specializing in the sale and service of yachts worldwide. The company offers services for buying and selling both new and used motor yachts, sailing vessels, and luxury superyachts. They also provide yacht registration, insurance, technical maintenance, crew selection, and charter organization services across the U.S., Canada, Latin America, the Caribbean, and the Bahamas.

The founder and lead broker of the company is Andrey Shestakov, a licensed and certified expert with extensive experience in marine engineering and shipbuilding.

The company has an extensive network of partnerships with major yacht manufacturers worldwide and provides services in multiple languages, including Russian, Ukrainian, Spanish, and English. The office is in Dania Beach, Florida, USA.

For more information and to view available yachts, you can visit the company's official website: <https://shestakovyachtsales.com>

Contact details

Phone: +1(954)274-4435

Email: andrey@shestakovyachtsales.com

Address



1380 Weeping Willow Way, Hollywood,
Florida 33019