



SHESTAKOV

Yacht Sales

450 VOYAGER PILOTHOUSE – CARVER YACHTS



Builder:

Carver Yachts

Model:

450 Voyager Pilothouse

LOA:

45' 0" (13.72 m)

Beam:

14' 0" (4.55 m)

Max Draft:

11' 9" (3.58 m)

Water Capacity:

150 Gallons

Fuel Capacity:

560 Gallons

Total Heads:

2

Hull Material:

Fiberglass and Plastic Yachts

Deck Material:

Fiberglass

Engines:

2

Manufacturer:

Cummins

If you would like to buy a yacht **450 VOYAGER PILOTHOUSE – Carver Yachts** or would like help, please call +1(954)274-4435 or visit shestakovyachtsales.com

TABLE OF CONTENTS

OVERVIEW	3
Selecting a 450 Voyager Pilothouse	3
Features of the Model	3
Technical Specifications	4
Pricing and Ordering	4
Questions and Answers	4
Owner Experience Review	5
Pros and Cons	6
Comparison with Other Models	7
SPECIFICATIONS	8
GALLERY	9
CONTACTS	14

OVERVIEW

Discover the 450 Voyager Pilothouse from Carver Yachts—a multi-role motor yacht in the wider motor yachts category, built on a resilient fiberglass and plastic hull. Shestakov Yacht Sales, represented by broker Andrey Shestakov, can guide you through availability, specification options, and the steps to acquire this model.

Selecting a 450 Voyager Pilothouse

If balanced accommodation, carrying capacity, and dependable operation are priorities, the 450 Voyager Pilothouse is designed to meet those needs with twin inboard diesel power and a functional two-head arrangement. It stands as a sensible option within the motor yachts field when simplicity and reliability of systems are valued.

Work directly with Andrey Shestakov and the Shestakov Yacht Sales team to assess current listings for the 450 Voyager Pilothouse, review different fit-outs, and schedule hull inspections.

Features of the Model

- Twin inboard diesel propulsion: 2 x **Cummins** engines offer balanced power and manageable service routines
- Dimensions that blend liveability with handling: **45 ft (13.72 m) LOA** and **14 ft (4.55 m) beam**
- Underwater profile designed for confidence: **11.756 ft (3.5833 m) draft**
- Sturdy construction on a fiberglass and plastic hull with a **fiberglass** deck
- Practical accommodations and systems with **2 heads**, and substantial **fuel (560 gal)** and **water (150 gal)** reserves

- Classification: motor yacht within the motor yachts segment

Technical Specifications

- Model: 450 Voyager Pilothouse
- Builder: Carver Yachts
- Category: motor yachts
- Type: motor yacht
- Hull: fiberglass and plastic
- Deck material: Fiberglass
- LOA: 45 ft (13.72 m)
- Beam: 14 ft (4.55 m)
- Draft (max): 11.756 ft (3.5833 m)
- Engines: 2 x Cummins, Inboard, Diesel
- Heads: 2
- Fuel capacity: 560 gal
- Water capacity: 150 gal

Pricing and Ordering

For up-to-date pricing, current availability, and bespoke search assistance on the 450 Voyager Pilothouse, reach out to Andrey Shestakov at Shestakov Yacht Sales. Our brokerage manages showings, paperwork, and negotiations to simplify your purchase process.

Questions and Answers

Q: What type of yacht is the 450 Voyager Pilothouse? A: It's a **motor yacht** categorized in the **motor yachts** sector, constructed on a **fiberglass and plastic** hull.

Q: What propulsion does it use? A: The vessel is driven by **2 x Cummins Inboard Diesel** engines, delivering a reliable balance of power and serviceability.

Q: What are the key dimensions? A: **LOA** measures 45 ft (13.72 m), **Beam** is 14 ft (4.55 m), and **Draft** (max) is 11.756 ft (3.5833 m).

Q: What onboard amenities and capacities stand out? A: The yacht includes **2 heads**, with **fuel capacity** of 560 gal and **water capacity** of 150 gal to support extended cruising.

Q: How can I purchase through Shestakov Yacht Sales? A: Contact **Andrey Shestakov** and the Shestakov Yacht Sales team to review available 450 Voyager Pilothouse listings, set up inspections, and handle offers through to closing.

Owner Experience Review

Owners of the 450 Voyager Pilothouse from Carver Yachts describe it as a flexible platform well suited to family cruising and shorter day outings, with early trips commonly used to refine docking skills and learn the vessel's systems.

The pilothouse helm is social by design—wraparound seating for four beside the captain keeps guests engaged underway—while the open flow between salon and galley (including a stand-up refrigerator and a galley positioned between salon and pilothouse) plus a two-stateroom, two-head arrangement make the boat practical for small-group overnighting; owners frequently report the ability to sleep six.

On-water performance depends on configuration. Owners commonly describe it as a comfortable, economical cruiser around 16 knots, with trim tabs holding well at typical cruise settings (about 18.5 knots at 2350 rpm). Reported top

speeds vary considerably—some owners cite about 20 mph on older examples, while a separate test recorded 29 mph. Propeller choice, gear reduction, vessel load, and tab trim all significantly affect these numbers, and a few owners note higher top speeds when tabs are retracted.

Maintenance discussions tend to focus on anticipated survey items rather than unexpected failures: common topics include rudder-post leakage (often remedied with Tides-style lip seals and, when necessary, rudder removal), thruster gear-case water intrusion, minor shaft-seal seepage, fractured davit welds, and the eventual need to replace exhaust elbows. Some owners have also found availability of certain molded or trim parts—such as Bomar hatches—limited, occasionally requiring local fabrication, so allowing time and budget for sourcing or custom work is sensible.

Pros and Cons

- Social pilothouse helm with wraparound seating for four keeps crew involved underway.
- Livable layout with a flowing salon/galley, two staterooms and two heads, with real-world overnights for six.
- Comfortable, economical cruising around 16 knots, with tabs working well at typical cruise settings.
- Reported top speed varies widely (about 20 mph to a cited 29 mph) and is sensitive to props, reduction, load, and tab position.
- Rudder-post leaks are a known maintenance item, often requiring attention to Tides lip seals and possible rudder removal.
- Owners have encountered thruster gear-case water ingress, shaft-seal drips, fractured davit welds, exhaust-elbow replacements, and scarce molded/trim parts like Bomar hatches.

Comparison with Other Models

Model	LOA	Beam	Draft	Speed (Cruising/ Max)	Gross Tonnage
450 Voyager Pilothouse	45' 0" (13.72 m)	14' 0" (4.55 m)	11' 9" (3.58 m)		
36 Aft Cabin Motoryacht	35' 0" (10.77 m)	12' 0" (3.76 m)		7.5 kn	
43C	43' 0" (13.11 m)	13' 0" (4.22 m)	11' 9" (3.58 m)	28 kn / 33 kn	
C52 Command Bridge	52' 0" (15.85 m)	15' 0" (4.78 m)	14' 3" (4.33 m)	16.4 kn / 31 kn	
Santego 3067	34' 0" (10.36 m)	11' 0" (3.35 m)			
570 Voyager Pilot House	57' 0" (17.37 m)	15' 0" (4.70 m)	14' 9" (4.50 m) – 16' 5" (5 m)	23 kn / 28 kn	51
380 Express	38' 0" (11.58 m)	13' 0" (3.96 m)			
530 Voyager Pilothouse	53' 0" (16.15 m)	15' 0" (4.67 m)	15' 7" (4.75 m)		
360 Mariner	36' 0" (11.12 m)	12' 0" (3.89 m)	10' 1" (3.08 m)		
396 Aft Cabin MY	40' 0" (12.37 m)	13' 0" (4.24 m)	11' 6" (3.50 m)		

SPECIFICATIONS

LOA:

45' 0" (13.72 m)

Max Draft:

11' 9" (3.58 m)

Water Capacity:

150 Gallons

Total Heads:

2

Hull Material:

Fiberglass and Plastic Yachts

Engines:

2

Engine Type:

Inboard

Beam:

14' 0" (4.55 m)

Fuel Capacity:

560 Gallons

Deck Material:

Fiberglass

Manufacturer:

Cummins

Fuel Type:

Diesel

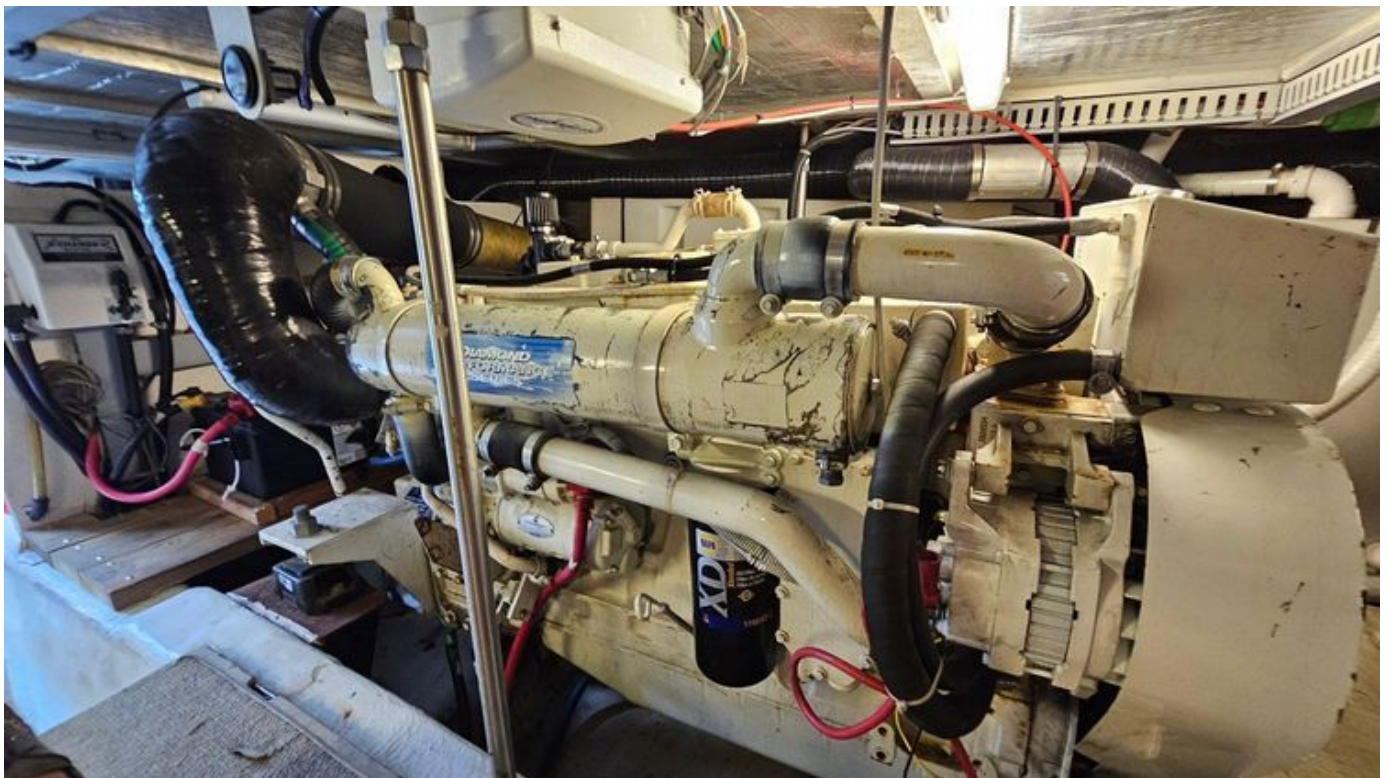
GALLERY











CONTACTS

Shestakov Yacht Sales is a brokerage company specializing in the sale and service of yachts worldwide. The company offers services for buying and selling both new and used motor yachts, sailing vessels, and luxury superyachts. They also provide yacht registration, insurance, technical maintenance, crew selection, and charter organization services across the U.S., Canada, Latin America, the Caribbean, and the Bahamas.

The founder and lead broker of the company is Andrey Shestakov, a licensed and certified expert with extensive experience in marine engineering and shipbuilding.

The company has an extensive network of partnerships with major yacht manufacturers worldwide and provides services in multiple languages, including Russian, Ukrainian, Spanish, and English. The office is in Dania Beach, Florida, USA.

For more information and to view available yachts, you can visit the company's official website: <https://shestakovyachtsales.com>

Contact details

Phone: +1(954)274-4435

Email: andrey@shestakovyachtsales.com

Address



1380 Weeping Willow Way, Hollywood,
Florida 33019