



SHESTAKOV

Yacht Sales

530 VOYAGER PILOTHOUSE – CARVER YACHTS



Builder:

Carver Yachts

Model:

530 Voyager Pilothouse

LOA:

53' 0" (16.15 m)

Beam:

15' 0" (4.67 m)

Max Draft:

15' 7" (4.75 m)

Water Capacity:

200 Gallons

Fuel Capacity:

800 Gallons

Sleeps:

8

Total Heads:

2

Hull Material:

Fiberglass and Plastic Yachts

Deck Material:

Fiberglass

Engines:

2

If you would like to buy a yacht **530 VOYAGER PILOTHOUSE – Carver Yachts** or would like help, please call +1(954)274-4435 or visit shestakovyachtsales.com

TABLE OF CONTENTS

OVERVIEW 3

- Selecting a 530 Voyager Pilothouse 3
- Features of the Model 3
- Technical Specifications 4
- Pricing and Ordering 4
- Questions and Answers 4
- Owner Experience Review 5
- Pros and Cons 6
- Comparison with Other Models 6

SPECIFICATIONS 8

GALLERY 9

CONTACTS 14

OVERVIEW

The 530 Voyager Pilothouse from Carver Yachts represents a polished entry in the motor yacht category within the broader motor yachts segment.

Constructed on a resilient fiberglass and plastic foundation, it typically comes with twin inboard diesel propulsion from Volvo Penta, arrangements to sleep eight, and two heads—features that support extended cruising. For assistance with selection and acquisition, Shestakov Yacht Sales and broker Andrey Shestakov are available to advise.

Selecting a 530 Voyager Pilothouse

Deciding if the 530 Voyager Pilothouse fits your needs depends on your cruising style and entertaining plans. Measuring 53 ft (16.15 m) LOA with a 15 ft (4.67 m) beam, it delivers roomy interiors for family and guests, offering berths for up to 8 and two heads. The twin inboard Volvo Penta diesels appeal to buyers who value dependable propulsion and economical long-range capability, supported by an 800-gallon fuel reserve and 200 gallons of freshwater. If a hull in the fiberglass and plastic classification and a true motor yacht layout are your priorities, Shestakov Yacht Sales — led by Andrey Shestakov — can confirm availability, assess suitability, and outline next steps.

Features of the Model

- Classified as a motor yacht within the wider motor yachts market segment
- Twin inboard diesel propulsion sourced from Volvo Penta (2 engines)
- Accommodation for up to 8 guests with 2 heads for onboard comfort
- Large cruising capacities: 800 gal fuel and 200 gal freshwater
- Hull conforms to Fiberglass and Plastic Yachts standards with a fiberglass deck

Technical Specifications

- Builder: Carver Yachts
- Model: 530 Voyager Pilothouse
- Class: motor yacht; Segment: motor yachts; Hull category: Fiberglass and Plastic Yachts
- LOA: 53 ft (16.15 m)
- Beam: 15 ft (4.67 m)
- Draft (max): 15.584 ft (4.75 m)
- Engines: 2 x Volvo Penta, Inboard, Diesel
- Sleeps: 8
- Heads: 2
- Fuel capacity: 800 gal
- Fresh water capacity: 200 gal
- Hull material: Fiberglass and Plastic Yachts
- Deck material: Fiberglass

Pricing and Ordering

To obtain current pricing, confirm availability, or arrange a viewing of the 530 Voyager Pilothouse, contact Shestakov Yacht Sales. Broker Andrey Shestakov can walk you through detailed specifications, answer ordering questions, discuss trade or financing options, and support you from initial inquiry through closing and delivery.

Questions and Answers

Q: What type of yacht is the 530 Voyager Pilothouse? A: It's a **motor yacht** in the broader **motor yachts** category, built on a **fiberglass and plastic** platform by Carver Yachts.

Q: What powers the yacht? A: The model is fitted with **two inboard diesel** engines manufactured by **Volvo Penta** , providing dependable propulsion for longer passages.

Q: How many people can sleep aboard, and how many heads are there? A: The yacht **sleeps 8** and is equipped with **2 heads** , offering ample accommodation for family and guests.

Q: What are the key dimensions? A: The **LOA** measures **53 ft (16.15 m)** , the **beam** is **15 ft (4.67 m)** , and the maximum **draft** is **15.584 ft (4.75 m)** .

Q: How do I get pricing and arrange a viewing? A: Contact **Shestakov Yacht Sales** and broker **Andrey Shestakov** for **pricing** , **availability** , and to schedule a **showing** of the 530 Voyager Pilothouse.

Owner Experience Review

Owners are often drawn to the 530 Voyager Pilothouse from Carver Yachts for its suitability for family cruising and weekend stays. The three-cabin arrangement with a central, amidships master stateroom, roomy salon and galley zones, and plentiful storage combined with comfortable headroom make it popular for hosting. The pilothouse configuration and lower helm earn consistent compliments for their layout and ergonomics—some online chatter even jokes about feeling like "Cpt Kirk"—and many vessels produced in the common 1998–2005 run remain actively used by families today.

When underway, reviewers describe the handling as nimble, responsive, and predictable. One test boat fitted with twin Cummins 450C engines recorded about a 22 mph cruise near 2,400 rpm and roughly 26 mph at top end. Owners emphasize it is not designed for high-speed operation; kept below 20 knots in moderate seas it tracks level and behaves well. Typical owner-upgrade patterns include new air-conditioning (VIP units included on many refits),

replacement house batteries, refreshed electronics, and added bow thrusters. Maintenance items to monitor are the single large sump box that collects several drains (which can produce pump/float failures, airlocks, and bilge wetting), faded gelcoat on older hulls that benefits cosmetic restoration, and an engine room that, while generally accessible to systems, offers relatively low headroom.

Pros and Cons

Pros:

- Family-oriented three-cabin plan with a center amidships master plus generous storage and comfortable headroom.
- Predictable, well-regarded handling and a pilothouse helm many owners find ergonomically superior.
- Common refit paths support extended cruising capability, including upgraded A/C, new batteries, modern electronics, and bow thruster installations.

Cons:

- Not built for high-speed performance; best results are reported when operating under 20 knots in moderate conditions.
- A single, large sump box that gathers multiple drains can lead to pump or float failures, airlocks, and leaks that wet the bilge.
- Older boats commonly show faded gelcoat that benefits from restoration and ongoing waxing.

Comparison with Other Models

Model	LOA	Beam	Draft	Speed (Cruising/Max)	Gross Tonnage

530 Voyager Pilothouse	53' 0" (16.15 m)	15' 0" (4.67 m)	15' 7" (4.75 m)		
36 Aft Cabin Motoryacht	35' 0" (10.77 m)	12' 0" (3.76 m)		7.5 kn	
43C	43' 0" (13.11 m)	13' 0" (4.22 m)	11' 9" (3.58 m)	28 kn / 33 kn	
C52 Command Bridge	52' 0" (15.85 m)	15' 0" (4.78 m)	14' 3" (4.33 m)	16.4 kn / 31 kn	
Santego 3067	34' 0" (10.36 m)	11' 0" (3.35 m)			
570 Voyager Pilot House	57' 0" (17.37 m)	15' 0" (4.70 m)	14' 9" (4.50 m) – 16' 5" (5 m)	23 kn / 28 kn	51
380 Express	38' 0" (11.58 m)	13' 0" (3.96 m)			
360 Mariner	36' 0" (11.12 m)	12' 0" (3.89 m)	10' 1" (3.08 m)		
396 Aft Cabin MY	40' 0" (12.37 m)	13' 0" (4.24 m)	11' 6" (3.50 m)		
Californian 48 Aft Cabin	48' 0" (14.63 m)	15' 0" (4.62 m)	14' 9" (4.50 m)		

SPECIFICATIONS

LOA:

53' 0" (16.15 m)

Max Draft:

15' 7" (4.75 m)

Water Capacity:

200 Gallons

Sleeps:

8

Hull Material:

Fiberglass and Plastic Yachts

Engines:

2

Engine Type:

Inboard

Beam:

15' 0" (4.67 m)

Fuel Capacity:

800 Gallons

Total Heads:

2

Deck Material:

Fiberglass

Manufacturer:

Volvo Penta

Fuel Type:

Diesel

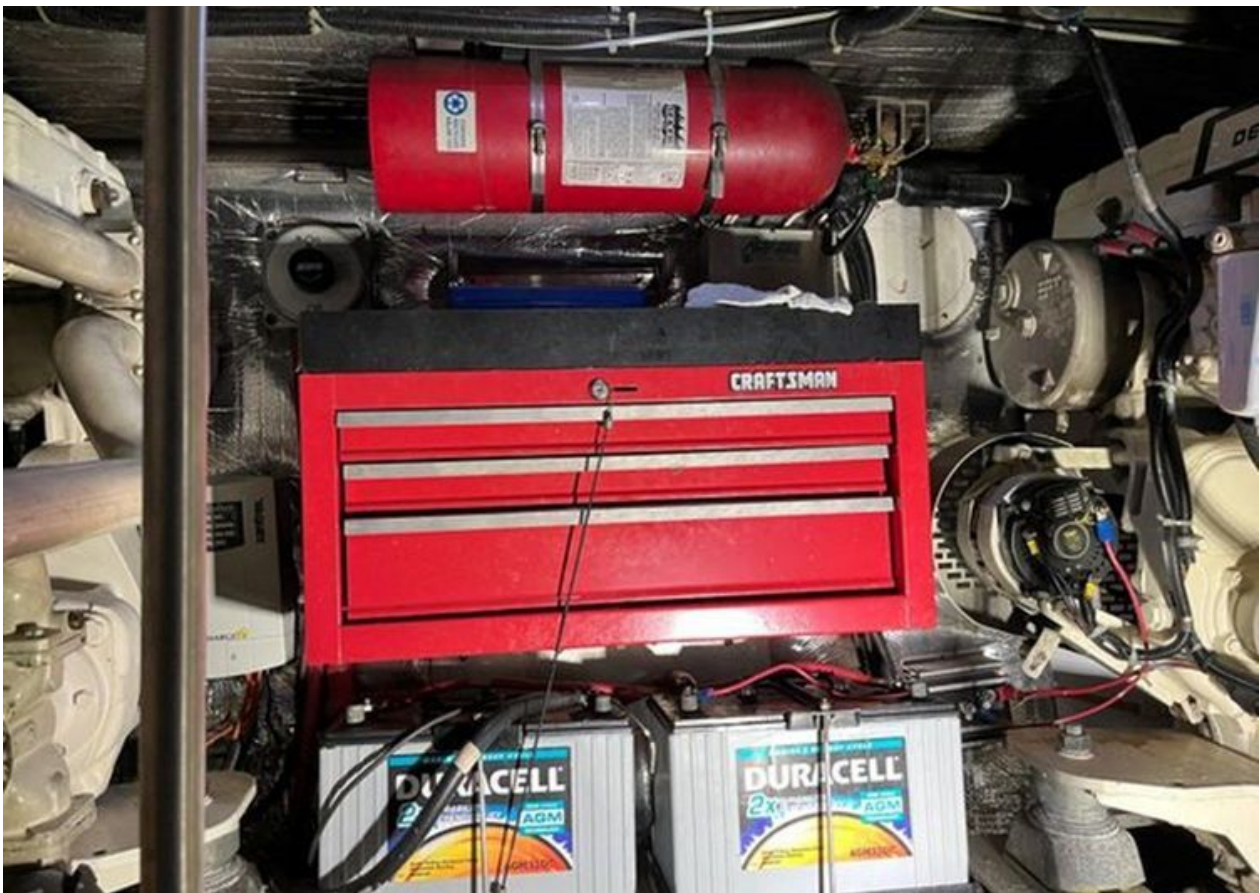
GALLERY











CONTACTS

Shestakov Yacht Sales is a brokerage company specializing in the sale and service of yachts worldwide. The company offers services for buying and selling both new and used motor yachts, sailing vessels, and luxury superyachts. They also provide yacht registration, insurance, technical maintenance, crew selection, and charter organization services across the U.S., Canada, Latin America, the Caribbean, and the Bahamas.

The founder and lead broker of the company is Andrey Shestakov, a licensed and certified expert with extensive experience in marine engineering and shipbuilding.

The company has an extensive network of partnerships with major yacht manufacturers worldwide and provides services in multiple languages, including Russian, Ukrainian, Spanish, and English. The office is in Dania Beach, Florida, USA.

For more information and to view available yachts, you can visit the company's official website: <https://shestakovyachtsales.com>

Contact details

Phone: +1(954)274-4435

Email: andrey@shestakovyachtsales.com

Address



1380 Weeping Willow Way, Hollywood,
Florida 33019