



SHESTAKOV

Yacht Sales

## 78 - CHEOY LEE



**Builder:**

Cheoy Lee

**Model:**

78

**LOA:**

78' 0" (23.77 m)

**Beam:**

20' 0" (6.15 m)

**Max Draft:**

17' 9" (5.42 m)

**Water Capacity:**

330 Gallons

**Fuel Capacity:**

2700 Gallons

**Hull Material:**

Fiberglass and Plastic Yachts

**Deck Material:**

Fiberglass

**Engines:**

2

**Manufacturer:**

Caterpillar

**Engine Type:**

Inboard

If you would like to buy a yacht **78 - Cheoy Lee** or would like help, please call +1(954)274-4435 or visit [shestakovyachtsales.com](http://shestakovyachtsales.com)

---

# TABLE OF CONTENTS

---

<b>OVERVIEW .....</b>	<b>3</b>
<b>Selecting a 78 .....</b>	<b>3</b>
<b>Features of the Model .....</b>	<b>3</b>
<b>Technical Specifications .....</b>	<b>4</b>
<b>Pricing and Ordering .....</b>	<b>4</b>
<b>Questions and Answers .....</b>	<b>4</b>
<b>Owner Experience Review .....</b>	<b>5</b>
<b>Pros and Cons .....</b>	<b>6</b>
<b>Comparison with Other Models .....</b>	<b>7</b>
<b>SPECIFICATIONS .....</b>	<b>8</b>
<b>GALLERY .....</b>	<b>9</b>
<b>CONTACTS .....</b>	<b>14</b>

## OVERVIEW

---

The 78 from Cheoy Lee is offered as a motor yacht within the wider motor yachts category, built upon a rugged fiberglass-and-plastic hull. Measuring 78 ft (23.77 m) LOA with a 20 ft (6.15 m) beam and driven by twin inboard Caterpillar diesel engines, it delivers the size and capacity expected by serious long-range cruisers. For guidance on acquisition, Shestakov Yacht Sales and broker Andrey Shestakov are available to assist.

## Selecting a 78

---

Opting for the 78 emphasizes solid build quality, dependable twin inboard diesel propulsion, and substantial tankage for extended cruising. The yacht's 78 ft (23.77 m) overall length combined with a 20 ft (6.15 m) beam creates roomy, stable deck and accommodation spaces, while the generous 2,700-gallon fuel capacity and 330-gallon freshwater reserve help to reduce the need for frequent stops. As a motor yacht listed in the motor yachts segment, its fiberglass hull is chosen for durability and low maintenance. Take the 17.771 ft (5.4166 m) maximum draft into account when planning berths and passages.

## Features of the Model

---

- **Construction:** a fiberglass-and-plastic hull complemented by a fiberglass deck to provide structural strength and simplified upkeep.
- **Power:** twin inboard Caterpillar diesel engines offering proven reliability and accessible service support.
- **Capacities:** 2,700 gallons of fuel and 330 gallons of potable water to support extended voyages between ports.
- **Dimensions:** LOA 78 ft (23.77 m), beam 20 ft (6.15 m), draft max 17.771 ft

(5.4166 m) for a substantial presence both underway and at anchor.

- Classification: a motor yacht within the motor yachts class.

## Technical Specifications

---

- Builder: Cheoy Lee
- Model: 78
- Category: motor yachts
- Type: motor yacht
- Hull: fiberglass and plastic
- Deck Material: Fiberglass
- LOA: 78 ft (23.77 m)
- Beam: 20 ft (6.15 m)
- Draft (Max): 17.771 ft (5.4166 m)
- Engines: 2 x Caterpillar, Inboard, Diesel
- Fuel Capacity: 2,700 gallons
- Water Capacity: 330 gallons

## Pricing and Ordering

---

To obtain current pricing, check availability, or schedule a viewing for the 78 by Cheoy Lee, contact broker Andrey Shestakov at Shestakov Yacht Sales. Our brokerage team will support you through surveys, offer preparation, negotiations, and closing paperwork to make the purchase process straightforward.

## Questions and Answers

---

Q: What is the classification of the 78? A: It's a motor yacht listed in the motor yachts category, constructed on a fiberglass-and-plastic hull for durability and

reduced maintenance demands.

Q: What are the key dimensions I should know? A: The yacht measures an **LOA of 78 ft (23.77 m)** , a **beam of 20 ft (6.15 m)** , and carries a **maximum draft of 17.771 ft (5.4166 m)** .

Q: What powers the yacht? A: The yacht is propelled by **2 inboard Caterpillar diesel** engines, a common and serviceable arrangement for dependable performance.

Q: How suitable is it for extended cruising? A: With a **fuel capacity of 2,700 gallons** and a **water capacity of 330 gallons** , the 78 is configured to support longer passages between refueling and water stops.

Q: How do I purchase through Shestakov Yacht Sales? A: Contact **Shestakov Yacht Sales** and broker **Andrey Shestakov** to review **pricing** , confirm availability, arrange surveys, and manage transaction steps for the 78 by Cheoy Lee.

## Owner Experience Review

---

Owners cruising aboard the Cheoy Lee 78 frequently travel as a family or owner party of six, making use of the three-stateroom layout while retaining the flexibility to run the yacht as owner-operators or with a small crew, thanks to the aft crew cabin with transom access. Several examples have completed passages to the Bahamas, and the motorsailor variant—built on a heavy-displacement platform and equipped with large fuel and water tanks—has been employed for longer-range, bluewater-style cruising.

When underway, owners report a sturdy, ship-like motion combined with favorable sea-keeping and efficiency; one comment captures the sentiment: "I've heard that it's a great sea boat and rides very well." Certain motor-yacht examples list cruising speeds in the 18–19 knot range, consistent with the

model's reputation for steady, predictable performance.

Life aboard is enhanced by generous accommodation arrangements, including a full-beam master and VIP, three guest staterooms connected by a central spiral staircase, and an open-plan galley with an island for service, plus multiple alfresco spaces. Engine-room access is arranged to facilitate maintenance—with organized runs, ample working room, and a secondary watertight entry—and one owner observed, "I like the layout of the boat and have had no real problems so far."

Fit-and-finish comments note that stainless appointments have "held up quite well" on reported vessels, although several examples carry "a lot of hours for its age," and community experience cautions that "things tend to break when they aren't used." For the motorsailor variant in particular, only a very small number were produced, which can make sourcing model-specific parts and support more challenging.

## Pros and Cons

---

- Stout, ship-like ride that owners describe as a great sea boat, with strong sea-keeping and efficient passage-making.
- Flexible mission profile suitable for family cruising or owner-operator use, featuring a three-stateroom layout plus an aft crew cabin with transom access.
- Generous, service-oriented design featuring a full-beam master and VIP, an open galley with an island, multiple alfresco areas, and accessible engine-room spaces.
- Some yachts show high engine or service hours relative to their age, raising the importance of careful inspection and maintenance planning.
- Periods of infrequent use can lead to failures; owners report that "things tend to break when they aren't used."
- The motorsailor variant was produced in very limited quantities, so locating

model-specific parts and technical support may be more difficult.

## Comparison with Other Models

Model	LOA	Beam	Draft	Speed (Cruising/Max)	Gross Tonnage
78	78' 0" (23.77 m)	20' 0" (6.15 m)	17' 9" (5.42 m)		
Marco Polo Series	150' 0" (45.97 m)	29' 0" (8.99 m)	32' 3" (9.83 m)	10 kn / 12 kn	485
145 Global Series Long Range Trideck	145' 0" (44.20 m)	29' 0" (8.84 m)	26' 3" (8 m)	12 kn / 17 kn	
65 Midnight Lace	65' 0" (19.94 m)	18' 0" (5.72 m)	12' 10" (3.92 m)	22 kn / 32 kn	
81 Sport Yacht	81' 0" (24.69 m)	21' 0" (6.43 m)	17' 9" (5.42 m)	17 kn / 21 kn	179
Long Range Cruiser LRC	55' 0" (16.79 m)	17' 0" (5.33 m)	17' 6" (5.33 m)		
Pedrick 36	35' 0" (10.87 m)	11' 0" (3.43 m)	18' 1" (5.50 m)		
Ketch	45' 0" (13.84 m)	12' 0" (3.68 m)	18' 10" (5.75 m)		
Sport Motor Yacht	74' 0" (22.56 m)	20' 0" (6.15 m)	17' 9" (5.42 m) – 18' 4" (5.58 m)	19 kn / 22 kn	
Serenity 68	68' 0" (20.73 m)	18' 0" (5.49 m)	17' 3" (5.25 m)	10.2 kn / 12.5 kn	

---

# SPECIFICATIONS

---

**LOA:**

78' 0" (23.77 m)

**Max Draft:**

17' 9" (5.42 m)

**Water Capacity:**

330 Gallons

**Hull Material:**

Fiberglass and Plastic Yachts

**Engines:**

2

**Engine Type:**

Inboard

**Beam:**

20' 0" (6.15 m)

**Fuel Capacity:**

2700 Gallons

**Deck Material:**

Fiberglass

**Manufacturer:**

Caterpillar

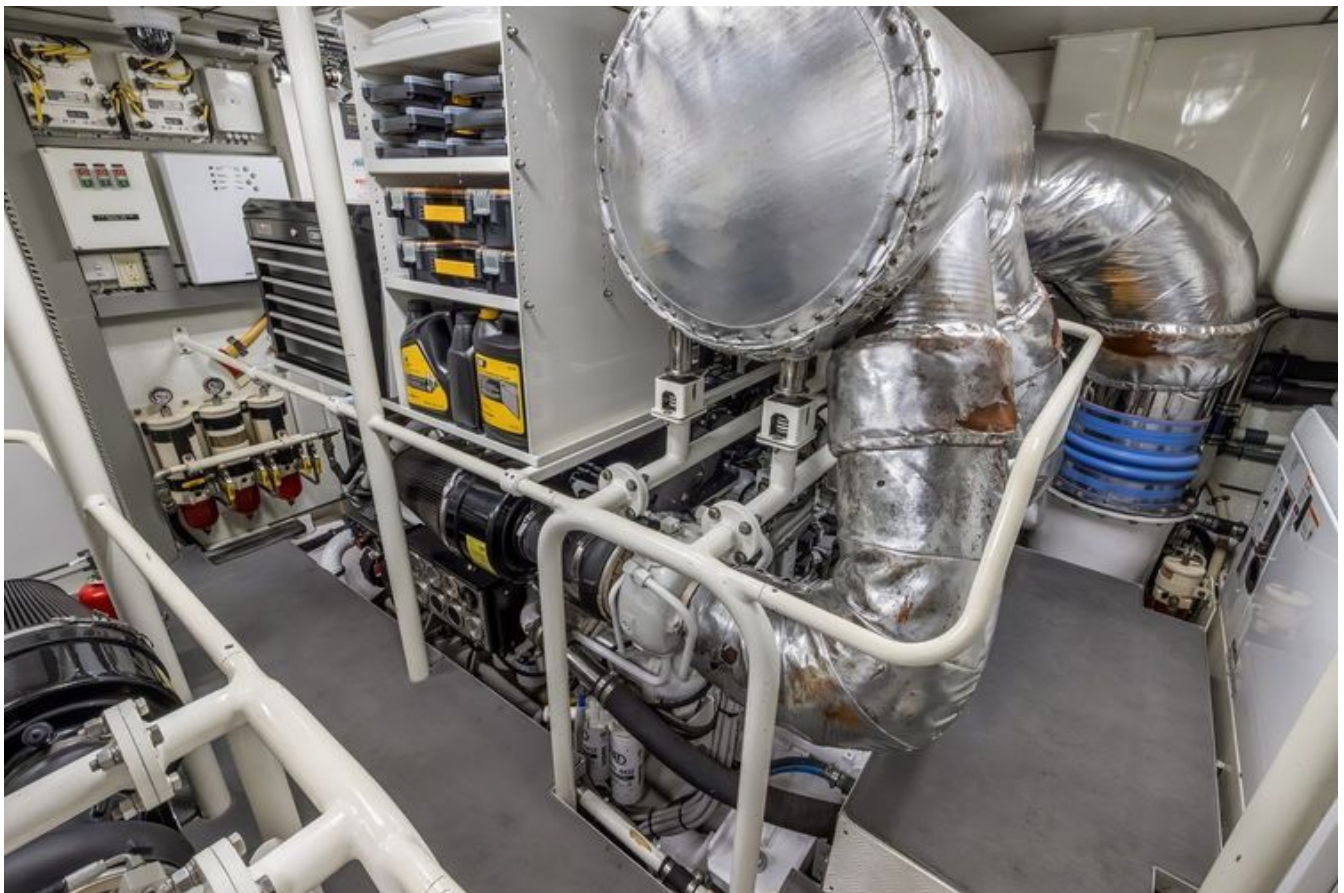
**Fuel Type:**

Diesel

# GALLERY











# CONTACTS

---

Shestakov Yacht Sales is a brokerage company specializing in the sale and service of yachts worldwide. The company offers services for buying and selling both new and used motor yachts, sailing vessels, and luxury superyachts. They also provide yacht registration, insurance, technical maintenance, crew selection, and charter organization services across the U.S., Canada, Latin America, the Caribbean, and the Bahamas.

The founder and lead broker of the company is Andrey Shestakov, a licensed and certified expert with extensive experience in marine engineering and shipbuilding.

The company has an extensive network of partnerships with major yacht manufacturers worldwide and provides services in multiple languages, including Russian, Ukrainian, Spanish, and English. The office is in Dania Beach, Florida, USA.

For more information and to view available yachts, you can visit the company's official website: <https://shestakovyachtsales.com>

## Contact details

---

**Phone:** +1(954)274-4435

**Email:** [andrey@shestakovyachtsales.com](mailto:andrey@shestakovyachtsales.com)

## Address

---



1380 Weeping Willow Way, Hollywood,  
Florida 33019