



SHESTAKOV

Yacht Sales

COMMANDER – CHRIS-CRAFT

Done

2 of 2



Builder:

Chris-Craft

Model:

Commander

LOA:

31' 0" (9.73 m)

Beam:

10' 0" (3.05 m)

Water Capacity:

25 Gallons

Fuel Capacity:

100 Gallons

Sleeps:

2

Total Heads:

1

Engines:

2

Manufacturer:

Chris Craft

Engine Type:

Inboard

Fuel Type:

Gas

If you would like to buy a yacht **COMMANDER – Chris-Craft** or would like help, please call +1(954)274-4435 or visit shestakovyachtsales.com

TABLE OF CONTENTS

OVERVIEW 3

- Selecting a Commander 3
- Features of the Model 3
- Technical Specifications 4
- Pricing and Ordering 4
- Questions and Answers 4
- Owner Experience Review 5
- Pros and Cons 6
- Comparison with Other Models 6

SPECIFICATIONS 8

GALLERY 9

CONTACTS 14

OVERVIEW

The Commander from Chris-Craft serves as a flexible, go-anywhere dayboat that also handles comfortable overnighting. Offered through Shestakov Yacht Sales, broker Andrey Shestakov is available to assist with selection and the purchase process.

Selecting a Commander

When you need a manageable yacht that slips into tight marina slips yet behaves confidently offshore, the Commander is a standout option. Measuring 31 ft (9.73 m) LOA with a 10 ft (3.05 m) beam, it strikes a practical balance between compact footprint and usable deck area for couples or family outings. Twin inboard gasoline engines give predictable handling and simple helm control, while onboard arrangements accommodate up to 10 people, offering sleeping berths for 2 and a single head for privacy. For purchasers looking for a small, functional motor yacht built by a respected American marque, this model is very appealing.

Features of the Model

- Built by Chris-Craft
- 31 ft LOA with a 10 ft beam, delivering confident seakeeping and easy dockside handling
- Twin inboard gas engines for dependable propulsion and maneuverability
- Cabin and deck arrangements rated for up to 10 passengers; berths for 2 for overnight stays
- One head to support weekend cruising comfort
- 100-gallon fuel tank and 25-gallon fresh water tank

Technical Specifications

- Length overall (LOA): 31 ft (9.73 m)
- Beam: 10 ft (3.05 m)
- Engines: 2 x Chris Craft, Inboard, Gas
- Accommodation capacity: 10
- Sleeps: 2
- Heads: 1
- Fresh water capacity: 25 gal
- Fuel capacity: 100 gal

Pricing and Ordering

Current availability and pricing are subject to market conditions and individual listings. Contact Andrey Shestakov at Shestakov Yacht Sales to review current Commander inventory, schedule inspections, and coordinate survey and closing for your motor yacht purchase.

Questions and Answers

Q: What type of yacht is the Commander? A: It's a motor yacht produced by Chris-Craft, combining a compact 31 ft **LOA** and 10 ft **beam** with twin inboard power for flexible day-cruising and occasional overnight use.

Q: How many people can it host and how many can sleep onboard? A: The **accommodations** rate the vessel for 10 aboard, with **sleeps** configured for 2 and a single **head** , making it well suited to couples who host guests during the day.

Q: What powers the yacht? A: Propulsion comes from two Chris Craft **engines** installed as **Inboard** units running on **Gas** , offering straightforward

serviceability and reliable thrust.

Q: What are the fuel and water capacities? A: The yacht carries a **fuel capacity** of 100 gal and a **fresh water capacity** of 25 gal—sufficient for day trips and short overnight cruises.

Q: How do I buy through Shestakov Yacht Sales? A: Contact **Andrey Shestakov** at **Shestakov Yacht Sales** to explore available Commander listings, arrange viewings, negotiate offers, and manage survey and closing logistics.

Owner Experience Review

Owners operate the Commander from Chris-Craft across several roles: family overnight cruising on mainstream 31'–38' examples, offshore fishing in 27'–30' Sportsman/Tournament Fisherman variants, and day boating or harbor runs in 19'–28' Weekend/Supersport sizes. The deep V hull is frequently praised for its sure-footed manners in chop and rough seas, imparting a hefty, seaworthy character. As one owner summarized, "Confident handling is a consistent highlight."

Expectations for performance on the heavier mainstream and larger variants should be tempered: owners commonly report modest cruise and top speeds, with many undertaking prop changes or full repowers to improve performance. A recorded repower on a 30' example produced roughly 28 mph at 3100 rpm and about 39 mph at wide open throttle. Interior finishes vary by era—early boats feature traditional mahogany trim that many owners restore, while later builds used fiberglass accents; on 41'–47' versions, double-stateroom plans and dual heads are typical for entertaining and extended cruising. A frequent refrain from long-term owners is, "They just don't make them like they used to."

Maintenance figures prominently in the ownership narrative for older vessels.

Original big block gasoline powerplants (427/Crusader and similar) often reach the point of overhaul or prompt a repower, tasks that can be both involved and costly because of required re-shafting, re-propping, and engine room modifications. Prospective buyers and current owners also monitor for water intrusion and rot in decks, transoms, and stringers on ageing hulls; as one owner observed, these engines are "marvelous for the haul, but they take maintenance and they don't like sitting around."

Pros and Cons

- Deep V hull form yields confident handling in chop and unsettled conditions.
- Substantial, heavy construction imparts seaworthiness suitable for family cruising and overnight trips.
- Early examples offer classic mahogany interiors; larger models provide spacious multi-day layouts.
- Heavier variants commonly deliver modest cruise and top speeds compared with expectations.
- Original large gasoline engines may require rebuilds or repowers, which can be expensive and complex.
- Older boats are susceptible to deck, transom, and stringer rot and water intrusion if not properly maintained.

Comparison with Other Models

Model	LOA	Beam	Draft	Speed (Cruising/Max)	Gross Tonnage
Commander	31' 0" (9.73 m)	10' 0" (3.05 m)			
Dory	22' 0" (6.71 m)	8' 0" (2.44 m)	9' 10" (3 m)		
Launch 32	34' 0" (10.44 m)	10' 0" (3.10 m)	6' 3" (1.92 m) – 10' 8" (3.25 m)		

381 Catalina	38' 0" (11.58 m)	14' 0" (4.27 m)	9' 10" (3 m)	17 kn / 24 kn	
CATALINA 34	34' 0" (10.44 m)	10' 0" (3.30 m)	6' 0" (1.83 m) – 9' 7" (2.92 m)		
34 Catalina	34' 0" (10.44 m)	10' 0" (3.30 m)	6' 0" (1.83 m) – 9' 7" (2.92 m)		
Corsair 25	25' 0" (7.62 m)	8' 0" (2.59 m)	9' 7" (2.92 m) – 9' 10" (3 m)		
Dory Skiff	22' 0" (6.71 m)	8' 0" (2.44 m)	6' 7" (2 m)	18 kn / 22 kn	
26 Continental	26' 0" (7.92 m)	8' 0" (2.44 m)			
cadet	22' 0" (6.71 m)				

SPECIFICATIONS

LOA:

31' 0" (9.73 m)

Water Capacity:

25 Gallons

Sleeps:

2

Engines:

2

Engine Type:

Inboard

Beam:

10' 0" (3.05 m)

Fuel Capacity:

100 Gallons

Total Heads:

1

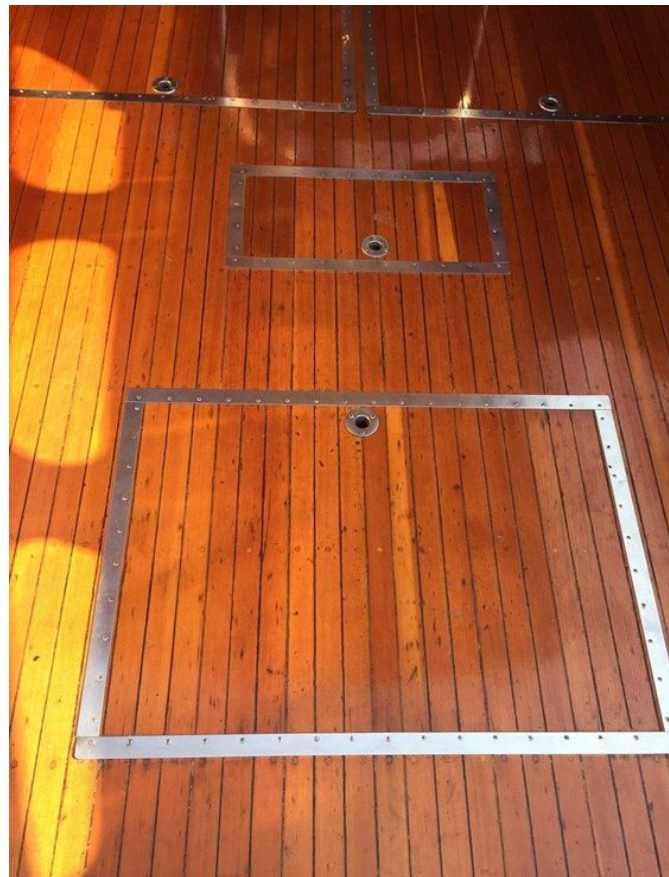
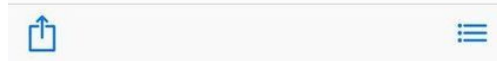
Manufacturer:

Chris Craft

Fuel Type:

Gas

GALLERY









Done

2 of 2



CONTACTS

Shestakov Yacht Sales is a brokerage company specializing in the sale and service of yachts worldwide. The company offers services for buying and selling both new and used motor yachts, sailing vessels, and luxury superyachts. They also provide yacht registration, insurance, technical maintenance, crew selection, and charter organization services across the U.S., Canada, Latin America, the Caribbean, and the Bahamas.

The founder and lead broker of the company is Andrey Shestakov, a licensed and certified expert with extensive experience in marine engineering and shipbuilding.

The company has an extensive network of partnerships with major yacht manufacturers worldwide and provides services in multiple languages, including Russian, Ukrainian, Spanish, and English. The office is in Dania Beach, Florida, USA.

For more information and to view available yachts, you can visit the company's official website: <https://shestakovyachtsales.com>

Contact details

Phone: +1(954)274-4435

Email: andrey@shestakovyachtsales.com

Address



1380 Weeping Willow Way, Hollywood,
Florida 33019