



SHESTAKOV

Yacht Sales

26 HCO - CREVALLE



Builder:

CREVALLE

Model:

26 HCO

LOA:

25' 0" (7.77 m)

Min Draft:

3' 3" (1 m)

Beam:

8' 0" (2.59 m)

Max Draft:

3' 10" (1.17 m)

Fuel Capacity:

90 Gallons

Hull Material:

Fiberglass and Plastic Yachts

Deck Material:

Fiberglass

Engines:

1

Manufacturer:

Yamaha

Engine Type:

Outboard

If you would like to buy a yacht **26 HCO - CREVALLE** or would like help, please call +1(954)274-4435 or visit shestakovyachtsales.com

TABLE OF CONTENTS

OVERVIEW 3

- Selecting a 26 HCO 3
- Features of the Model 3
- Technical Specifications 4
- Pricing and Ordering 4
- Questions and Answers 5
- Owner Experience Review 5
- Pros and Cons 6
- Comparison with Other Models 7

SPECIFICATIONS 8

GALLERY 9

CONTACTS 14

OVERVIEW

The 26 HCO from CREVALLE is a compact motor yacht built around a versatile center console layout and a resilient fiberglass-and-plastic hull. Powered by a single Yamaha gas/petrol outboard and carrying 90 gallons of fuel, it's tailored to day trips and coastal passages. For assistance with selection and purchase, reach out to Shestakov Yacht Sales under the direction of Andrey Shestakov.

Selecting a 26 HCO

Select the 26 HCO if you prioritize uncomplicated handling, straightforward upkeep, and the proven ergonomics of a center console format in a compact motor yacht package.

- Single Yamaha outboard, gas/petrol, for accessible ownership and routine servicing.
- Draft range of 3.281–3.827 ft (1–1.1666 m) to accommodate a variety of inshore conditions.
- Durable fiberglass and plastic construction with a fiberglass deck for low-maintenance operation.
- Supported by the sales and advisory services of Andrey Shestakov and the Shestakov Yacht Sales team.

Features of the Model

- Dedicated center console layout designed for intuitive helm access and unobstructed 360° deck circulation.
- Compact motor yacht configuration measuring 25 ft LOA for easier storage and trailering.
- Single Yamaha outboard; fuel type: gas/petrol.

- fiberglass-and-plastic hull paired with a fiberglass deck surface.
- 90-gallon fuel capacity to support full-day cruising and fishing excursions.

Technical Specifications

- Builder: CREVALLE
- Model: 26 HCO
- Category: motor yacht
- Subcategory: center console
- Hull category: fiberglass and plastic
- Length overall (LOA): 25 ft (7.77 m)
- Beam: 8 ft (2.59 m)
- Draft (min): 3.281 ft (1 m)
- Draft (max): 3.827 ft (1.1666 m)
- Engine count: 1
- Engine manufacturer: Yamaha
- Engine type: Outboard
- Fuel type: Gas/Petrol
- Hull material: fiberglass and plastic
- Deck material: Fiberglass
- Fuel capacity: 90 gal

Pricing and Ordering

To obtain pricing, confirm current availability, or arrange acquisition of a 26 HCO, contact Andrey Shestakov at Shestakov Yacht Sales. Our brokerage will manage inspections, paperwork, and delivery coordination with CREVALLE or assist in locating a well-matched pre-owned vessel.

Questions and Answers

Q: What is the boat's primary type? A: The **type** is a center console boat in the **class** of motor yachts with a **hull** built in fiberglass and plastic.

Q: Who is the builder of the 26 HCO? A: The **builder** is CREVALLE, recognized for manufacturing this particular center console model.

Q: What is the engine setup on this model? A: It uses a single **engine** from **Yamaha** ; configuration is **Outboard** and fuel is **Gas/Petrol** .

Q: What are the key dimensions? A: **LOA** is 25 ft (7.77 m), **beam** is 8 ft (2.59 m), with a draft range of 3.281–3.827 ft (1–1.1666 m).

Q: How do I proceed with a purchase? A: **Contact** Andrey Shestakov and the team at **Shestakov Yacht Sales** to review availability, pricing, and next steps for a 26 HCO.

Owner Experience Review

Owners who split time between family cruising and dedicated inshore/nearshore fishing generally report the 26 HCO from CREVALLE fulfills both roles effectively. The bow area converts to a comfortable lounge thanks to forward seating and cushions with a removable, reversible molded backrest, while dealers and reviewers note that the hardtop can be outfitted with three-sided glass, LED lighting, a misting system, and audio speakers. Angler-friendly appointments include lockable rod storage on the foredeck, integrated tackle compartments, a slide-out cooler incorporated into the leaning post, and three livewells (including two larger aft release wells). A portside swim platform with a telescoping stainless ladder and optional flip-up transom seating enhance family comfort and ease of access.

On the water, test drivers have praised the boat's dry, composed

motion—Lakeland Boating said it “eats up rough water,” and Sport Fishing references a 16° deadrise. Manufacturer figures and owner reports indicate a comfortable cruise near 30 mph at about 3500 RPM, with top speeds reported in the neighborhood of 50–61 mph depending on engine choice and propeller. The model remains trailerable (roughly 25'6" overall when configured for trailering), and the 90-gallon fuel tank combined with generous seating and storage supports day trips and short weekend outings. Routine maintenance follows standard outboard schedules for Yamaha/Mercury/Suzuki engines, the CREVALLE owners' manual details upkeep and troubleshooting, and a 6" jackplate plus a notched transom aid shallow-water planing and setup. Listings for well-kept private boats—such as a 2020 example stored indoors with very low hours—show how cleanly these boats present when properly maintained.

Pros and Cons

- Versatile hybrid layout that balances family cruising comfort with inshore/nearshore fishing functionality.
- Dry, smooth ride reported by testers, with approximately 30 mph cruise at ~3500 RPM and strong top-end potential depending on engine/propeller.
- Trailerable mixed-use platform (about 25'6" LOA) with a 6" jackplate and notched transom to assist shallow-water planing and setup.
- Optimized for inshore/nearshore operation; not intended as a bluewater offshore vessel.
- Real-world top speed varies with engine selection and prop choice, so performance is setup-dependent.
- Converting between lounge and fishing configurations requires reworking forward cushions and backrests.

Comparison with Other Models

Model	LOA	Beam	Draft	Speed (Cruising/Max)	Gross Tonnage
26 HCO	25' 0" (7.77 m)	8' 0" (2.59 m)	3' 3" (1 m) – 3' 10" (1.17 m)		

SPECIFICATIONS

LOA:

25' 0" (7.77 m)

Beam:

8' 0" (2.59 m)

Fuel Capacity:

90 Gallons

Hull Material:

Fiberglass and Plastic Yachts

Engines:

1

Engine Type:

Outboard

Min Draft:

3' 3" (1 m)

Max Draft:

3' 10" (1.17 m)

Deck Material:

Fiberglass

Manufacturer:

Yamaha

Fuel Type:

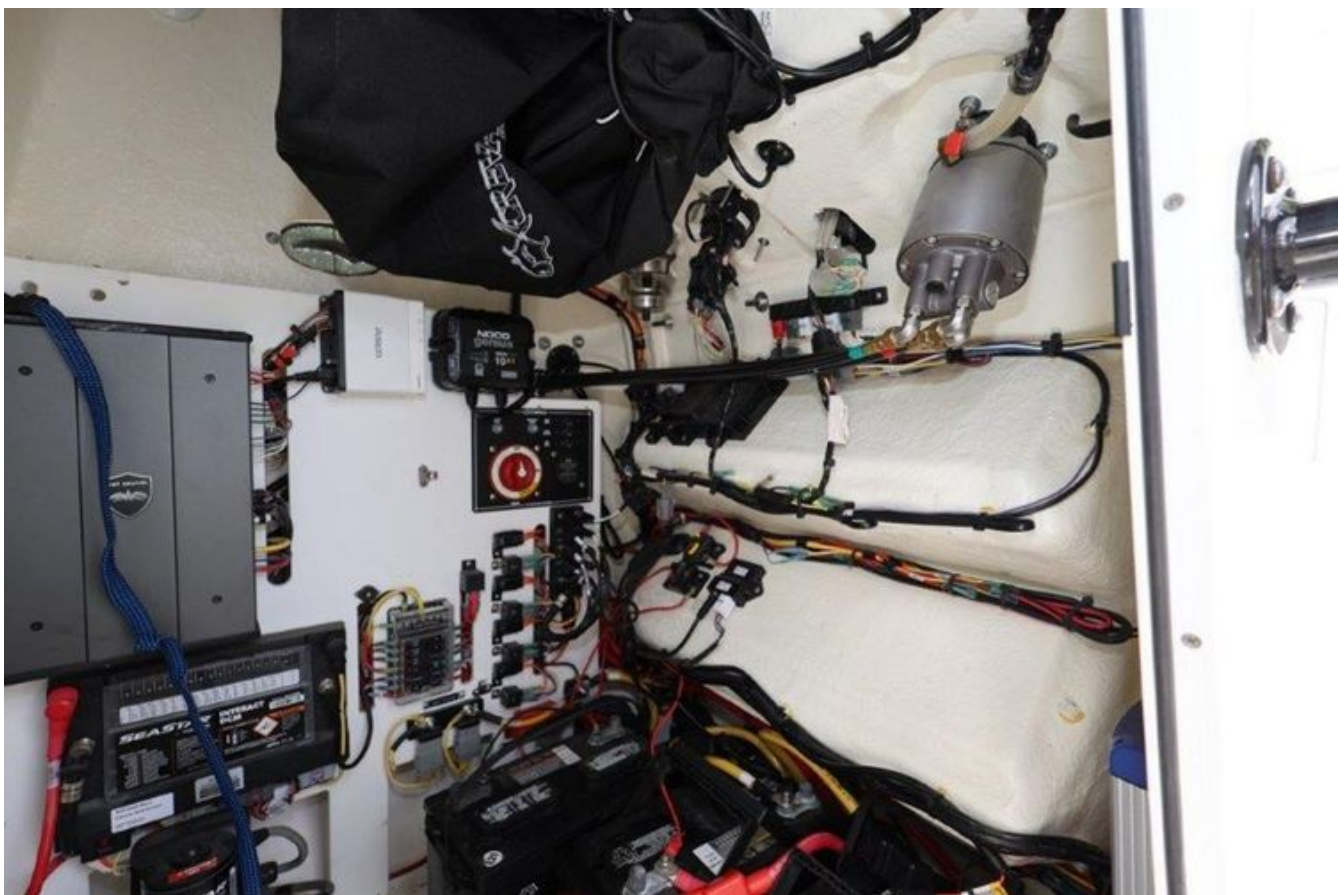
Gas/Petrol

GALLERY











CONTACTS

Shestakov Yacht Sales is a brokerage company specializing in the sale and service of yachts worldwide. The company offers services for buying and selling both new and used motor yachts, sailing vessels, and luxury superyachts. They also provide yacht registration, insurance, technical maintenance, crew selection, and charter organization services across the U.S., Canada, Latin America, the Caribbean, and the Bahamas.

The founder and lead broker of the company is Andrey Shestakov, a licensed and certified expert with extensive experience in marine engineering and shipbuilding.

The company has an extensive network of partnerships with major yacht manufacturers worldwide and provides services in multiple languages, including Russian, Ukrainian, Spanish, and English. The office is in Dania Beach, Florida, USA.

For more information and to view available yachts, you can visit the company's official website: <https://shestakovyachtsales.com>

Contact details

Phone: +1(954)274-4435

Email: andrey@shestakovyachtsales.com

Address



1380 Weeping Willow Way, Hollywood,
Florida 33019