



SHESTAKOV

Yacht Sales

## 3075 EXPRESS – CRUISERS YACHTS



**Builder:**

Cruisers Yachts

**Model:**

3075 Express

**LOA:**

30' 0" (9.14 m)

**Beam:**

10' 0" (3.15 m)

**Max Draft:**

9' 0" (2.75 m)

**Hull Material:**

Fiberglass and Plastic Yachts

**Deck Material:**

Fiberglass

**Engines:**

2

**Manufacturer:**

Volvo Penta

**Engine Type:**

I/O

**Fuel Type:**

Gas

If you would like to buy a yacht **3075 EXPRESS – Cruisers Yachts** or would like help, please call +1(954)274-4435 or visit [shestakovyachtsales.com](http://shestakovyachtsales.com)

---

# TABLE OF CONTENTS

---

**OVERVIEW ..... 3**

- Selecting a 3075 Express ..... 3
- Features of the Model ..... 3
- Technical Specifications ..... 4
- Pricing and Ordering ..... 4
- Questions and Answers ..... 4
- Owner Experience Review ..... 5
- Pros and Cons ..... 6
- Comparison with Other Models ..... 6

**SPECIFICATIONS ..... 8**

**GALLERY ..... 9**

**CONTACTS ..... 14**

## OVERVIEW

---

The 3075 Express by Cruisers Yachts is a flexible motor yacht within the cruiser class, built on a robust fiberglass-and-plastic hull and fitted with a fiberglass deck. At 30 ft (9.14 m) LOA and a 10 ft (3.15 m) beam, it strikes a practical balance between onboard living space and manageable handling for coastal passages.

### Selecting a 3075 Express

---

Opting for the 3075 Express means choosing a compact yet capable motor yacht suited to the cruiser-class lifestyle. Twin Volvo Penta gasoline I/O powerplants provide nimble response for tight marina work and relaxed weekend runs, while the modest footprint fits many slips. For personalized guidance on layouts, current stock, or to arrange a viewing, contact Andrey Shestakov and the team at Shestakov Yacht Sales.

### Features of the Model

---

- Category focus: a practical motor yacht positioned in the cruisers market
- Construction: durable fiberglass-and-plastic hull paired with a fiberglass deck
- Proportions that work: 30 ft LOA and 10 ft beam deliver a stable platform for day outings and short overnights
- Power for confidence: twin Volvo Penta gas I/O drives for straightforward operation and easier docking
- Backed by expertise: guided brokerage support from Andrey Shestakov at Shestakov Yacht Sales

## Technical Specifications

---

- Model: 3075 Express
- Builder: Cruisers Yachts
- Classification: motor yacht / cruiser
- Hull: fiberglass and plastic
- Deck: Fiberglass
- LOA: 30 ft (9.14 m)
- Beam: 10 ft (3.15 m)
- Max draft: 9.022 ft (2.75 m)
- Engines: 2 x Volvo Penta, I/O, Gas

## Pricing and Ordering

---

To obtain up-to-date pricing, check availability, or schedule a showing of the 3075 Express by Cruisers Yachts, get in touch with Andrey Shestakov at Shestakov Yacht Sales. Our brokerage team will assist you through consultation, offer preparation, survey coordination, and closing to ensure a seamless purchase process.

## Questions and Answers

---

Q: What are the key dimensions of the 3075 Express? A: The **LOA** measures 30 ft (9.14 m), the **beam** is 10 ft (3.15 m), and the **max draft** is 9.022 ft (2.75 m).

Q: What propulsion does it use? A: Power comes from twin Volvo Penta engines equipped with **I/O** drives running on **Gas**, giving responsive control suited to a cruisers itinerary.

Q: What is the hull and deck made of? A: The hull utilizes a fiberglass-and-plastic construction, while the **deck** is finished in **fiberglass** for

durability and straightforward maintenance.

Q: How is the model classified? A: It is categorized as a motor yacht within the cruisers segment, built upon a fiberglass-and-plastic hull platform.

Q: Who can help me buy this boat? A: Contact **Andrey Shestakov** and the team at **Shestakov Yacht Sales** for professional support, inspections, and transaction management on the 3075 Express by Cruisers Yachts.

## Owner Experience Review

---

Owners who cruise and weekend aboard the 3075 Express from Cruisers Yachts commonly describe it as an "excellent platform for cruising / overnighting." The mid-cabin arrangement—with a forward V/convertible dinette and an aft berth—alongside a compact galley and a stand-up head, supports one- to two-night trips, and owner/listing information frequently indicates accommodations for roughly 4–6 people. Reported interior headroom of approximately 6'2–6'3 combined with the beam gives many owners the impression of an interior that's "extremely roomy for a 30' boat," and air conditioning and heating are commonly found in listings.

On the water, the modified-V hull and stern-drive configuration provide the expected sterndrive handling and a composed ride. Owners report a typical cruise speed around 20 knots, with factory/test figures showing top speeds in the low-to-mid 30s. The boat planes easily and performs comfortably in calm to moderate sea conditions, with trim tabs available to fine-tune the running attitude.

Real ownership also brings maintenance considerations. Numerous owners have reported failures of the MerCruiser "Cool Fuel III" module, which can shed paint and lead to clogged injectors or regulator issues—problems that have sidelined boats for a season and, in some cases, required roughly \$5k to

correct. There are owner reports of intermittent Thunderbolt ignition faults on 5.7L engines, and private listings often note sterndrive/Bravo service items and occasional transom or drive repairs; however, many owners say engine-room access is good, which helps with routine maintenance and troubleshooting.

## Pros and Cons

- Interior feels “extremely roomy for a 30' boat,” with approximately 6'2–6'3 headroom and a functional mid-cabin layout.
- Owner and listing claims suggest sleeping accommodations for about 4–6, with a small galley, a stand-up head, and A/C/heat commonly available.
- Modified-V sterndrive arrangement yields smooth handling, an economical cruise near 20 knots, and top-end performance in the low-to-mid 30s.
- MerCruiser Cool Fuel III failures are frequently reported, with symptoms that can clog injectors/regulator and sometimes require around \$5k to repair.
- Owners note intermittent Thunderbolt ignition issues on 5.7L engines.
- Listings and owner commentary reference routine sterndrive/Bravo service needs and occasional transom/drive work.

## Comparison with Other Models

Model	LOA	Beam	Draft	Speed (Cruising/...	Gross...
3075 Express	30' 0" (9.14 m)	10' 0" (3.15 m)	9' 0" (2.75 m)		
3870 Esprit	43' 0" (13.18 m)	13' 0" (4.12 m)	9' 10" (3 m)		
45 Cantius	45' 0" (13.72 m)	14' 0" (4.42 m)	11' 3" (3.42 m)		
415 Express Motoryacht	41' 0" (12.50 m)				
3572 Express	38' 0" (11.66 m)	13' 0" (3.96 m)	11' 3" (3.42 m)	24 kn / 34 kn	
4270	42' 0" (12.80 m)	14' 0" (4.27 m)	11' 6" (3.50 m)		
50 GLS OB	50' 0" (15.24 m)		13' 1" (4 m)		
Express	38' 0" (11.58 m)	12' 0" (3.78 m)	11' 3" (3.42 m)	32 kn / 40 kn	

---

3672 Express	40' 0" (12.24 m)	13' 0" (3.96 m)	9' 10" (3 m)		
420 Sports Coupe	42' 0" (12.80 m)	13' 0" (4.12 m)	12' 0" (3.67 m)		

# SPECIFICATIONS

---

**LOA:**

30' 0" (9.14 m)

**Max Draft:**

9' 0" (2.75 m)

**Hull Material:**

Fiberglass and Plastic Yachts

**Engines:**

2

**Engine Type:**

I/O

**Beam:**

10' 0" (3.15 m)

**Deck Material:**

Fiberglass

**Manufacturer:**

Volvo Penta

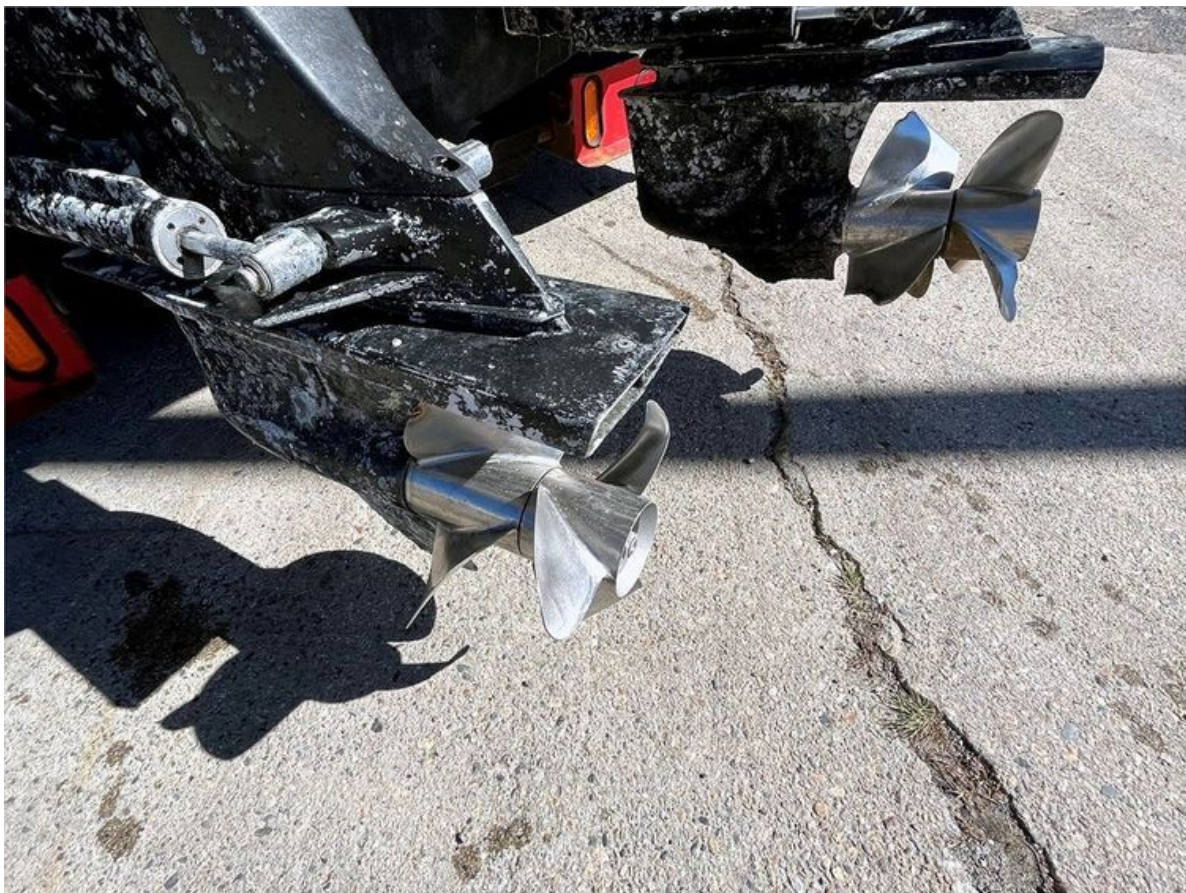
**Fuel Type:**

Gas

# GALLERY











# CONTACTS

---

Shestakov Yacht Sales is a brokerage company specializing in the sale and service of yachts worldwide. The company offers services for buying and selling both new and used motor yachts, sailing vessels, and luxury superyachts. They also provide yacht registration, insurance, technical maintenance, crew selection, and charter organization services across the U.S., Canada, Latin America, the Caribbean, and the Bahamas.

The founder and lead broker of the company is Andrey Shestakov, a licensed and certified expert with extensive experience in marine engineering and shipbuilding.

The company has an extensive network of partnerships with major yacht manufacturers worldwide and provides services in multiple languages, including Russian, Ukrainian, Spanish, and English. The office is in Dania Beach, Florida, USA.

For more information and to view available yachts, you can visit the company's official website: <https://shestakovyachtsales.com>

## Contact details

---

**Phone:** +1(954)274-4435

**Email:** [andrey@shestakovyachtsales.com](mailto:andrey@shestakovyachtsales.com)

## Address

---



1380 Weeping Willow Way, Hollywood,  
Florida 33019