



SHESTAKOV

Yacht Sales

420 SPORTS COUPE – CRUISERS YACHTS



Builder:

Cruisers Yachts

Model:

420 Sports Coupe

LOA:

42' 0" (12.80 m)

Beam:

13' 0" (4.12 m)

Max Draft:

12' 0" (3.67 m)

Water Capacity:

75 Gallons

Fuel Capacity:

300 Gallons

Sleeps:

4

Total Heads:

2

Hull Material:

Fiberglass and Plastic Yachts

Deck Material:

Fiberglass

Engines:

2

If you would like to buy a yacht **420 SPORTS COUPE – Cruisers Yachts** or would like help, please call +1(954)274-4435 or visit shestakovyachtsales.com

TABLE OF CONTENTS

OVERVIEW 3

- Selecting a 420 Sports Coupe 3
- Features of the Model 3
- Technical Specifications 4
- Pricing and Ordering 4
- Questions and Answers 4
- Owner Experience Review 5
- Pros and Cons 6
- Comparison with Other Models 6

SPECIFICATIONS 8

GALLERY 9

CONTACTS 14

OVERVIEW

Discover the 420 Sports Coupe from Cruisers Yachts — a motor yacht in the motor yachts category, constructed on a fiberglass and plastic hull. For expert guidance and to arrange a purchase, contact Andrey Shestakov at Shestakov Yacht Sales.

Selecting a 420 Sports Coupe

Opting for the 420 Sports Coupe is a sensible choice if you prioritize a well-proportioned vessel (42 ft LOA, 13 ft beam) that offers genuine cruising comfort for two or a small family. The layout supports four overnight guests across two heads, while the twin Volvo inboard diesels and substantial tankage deliver the assurance needed for extended weekend trips. As a motor yacht within the broader motor yachts market, it appeals to owners who want manageable handling and modern composite construction.

Features of the Model

- The 420 Sports Coupe is engineered as a comfortable, efficient motor yacht that fits squarely within the motor yachts segment.
- Built with a fiberglass and plastic hull and a fiberglass deck for durable, lightweight construction.
- Accommodations for 4 with 2 heads provide practical, family-friendly cruising arrangements.
- Propulsion is provided by twin Volvo inboard diesel engines for dependable performance.
- Tanks sized for weekend and extended outings: 300 gal fuel and 75 gal water.

Technical Specifications

- LOA: 42 ft (12.8 m)
- Beam: 13 ft (4.12 m)
- Max Draft: 12.03 ft (3.6666 m)
- Engines: 2 x Volvo, Inboard, Diesel
- Sleeps: 4
- Heads: 2
- Fuel Capacity: 300 gal
- Water Capacity: 75 gal
- Hull: fiberglass and plastic hull
- Deck: Fiberglass

Pricing and Ordering

For current pricing, delivery timelines, and to explore purchase options for the 420 Sports Coupe, reach out to Andrey Shestakov and the team at Shestakov Yacht Sales. We assist with specification review and manage the transaction process to match your schedule.

Questions and Answers

Q: What type of yacht is the 420 Sports Coupe? A: It is classified as a motor yacht within the larger motor yachts category, constructed on a fiberglass and plastic hull.

Q: How many people can the yacht sleep, and how many heads are onboard?
A: The yacht sleeps **4** guests and includes **2 heads** , providing comfortable arrangements for typical weekend use.

Q: What engines power the yacht? A: The 420 Sports Coupe is driven by **twin**

Volvo inboard diesel engines, chosen for their established reliability and straightforward maintenance.

Q: What are the key dimensions? A: Principal dimensions are **LOA 42 ft (12.8 m)** , **beam 13 ft (4.12 m)** , and **max draft 12.03 ft (3.6666 m)** .

Q: How do I get pricing and place an order? A: Contact **Andrey Shestakov** at **Shestakov Yacht Sales** for the latest pricing, availability, and to begin the purchase process for the 420 Sports Coupe.

Owner Experience Review

Owners commonly deploy the 420 Sports Coupe from Cruisers Yachts for family-focused coastal cruising and weekend stays at the marina. The genuine two-cabin/two-head arrangement—with an island queen berth forward and a convertible after cabin—lets families sleep aboard while retaining privacy. Below, the salon offers more than 7 feet of headroom, ample storage, and a dedicated enclosed shower. The galley is practical, featuring solid-surface counters and an Amtico-style sole, while the settee and a 26" entertainment center keep the saloon useful for both daytime lounging and evening entertainment. Above, a capacious U-shaped cockpit, wet bar, sunroof, and walk-through windshield create a seamless cockpit-to-cabin transition; optional cockpit A/C and near-360° helm sightlines enhance on-deck comfort.

When underway, joystick IPS control significantly eases close-quarters maneuvering—many owners describe it as eliminating “dockings from hell.” The hull delivers a dry, confident ride; a sharp entry and ample bow flare cut through waves, and the yacht handles with wide, stable turns, exhibiting modest bow rise (13°) and a low running angle (3°). Sea-trial numbers corroborate owner impressions: on plane in approximately 9.4 seconds, a top speed near 36.5 mph (31.7 knots) at 3600 rpm, and an efficient cruise in the area of 32.5 mph (28.3 knots). With a 300-gallon fuel capacity and diesel IPS

arrangements, the 420 Sports Coupe delivers the range and economical performance suitable for multi-day coastal passages.

Ownership carries IPS-specific service considerations. Experiences range from trouble-free operation to significant pod failures; owners typically recommend annual servicing and protective measures such as PropSpeed on running gear. Some brokers report tight engine-room access, although the hydraulic/electric cockpit hatch provides quicker inspection access. Expect that pod and drive maintenance—including oil changes and any pod repairs—can be costly, so a thorough pre-purchase survey should focus on heat exchangers, drive units, and oil analysis.

Pros and Cons

- True two-cabin/two-head layout with an island queen forward and a convertible aft cabin accommodates family overnights without sacrificing privacy.
- Joystick IPS controls make handling and docking in tight spaces much simpler.
- 300-gallon fuel capacity and diesel IPS options afford extended range and efficient cruising for multi-day coastal trips.
- IPS reliability reports are mixed, spanning flawless service histories to major pod issues.
- Pod and drive maintenance can be expensive, encompassing oil changes and potentially costly repairs.
- Engine-room access may be confined according to some brokers.

Comparison with Other Models

Model	LOA	Beam	Draft	Speed (Cruising/...	Gross...
420 Sports Coupe	42' 0" (12.80 m)	13' 0" (4.12 m)	12' 0" (3.67 m)		

3870 Esprit	43' 0" (13.18 m)	13' 0" (4.12 m)	9' 10" (3 m)		
45 Cantius	45' 0" (13.72 m)	14' 0" (4.42 m)	11' 3" (3.42 m)		
415 Express Motoryacht	41' 0" (12.50 m)				
3572 Express	38' 0" (11.66 m)	13' 0" (3.96 m)	11' 3" (3.42 m)	24 kn / 34 kn	
4270	42' 0" (12.80 m)	14' 0" (4.27 m)	11' 6" (3.50 m)		
50 GLS OB	50' 0" (15.24 m)		13' 1" (4 m)		
Express	38' 0" (11.58 m)	12' 0" (3.78 m)	11' 3" (3.42 m)	32 kn / 40 kn	
3672 Express	40' 0" (12.24 m)	13' 0" (3.96 m)	9' 10" (3 m)		
4270 Express	42' 0" (12.80 m)	14' 0" (4.27 m)	11' 6" (3.50 m)		

SPECIFICATIONS

LOA:

42' 0" (12.80 m)

Max Draft:

12' 0" (3.67 m)

Water Capacity:

75 Gallons

Sleeps:

4

Hull Material:

Fiberglass and Plastic Yachts

Engines:

2

Engine Type:

Inboard

Beam:

13' 0" (4.12 m)

Fuel Capacity:

300 Gallons

Total Heads:

2

Deck Material:

Fiberglass

Manufacturer:

Volvo

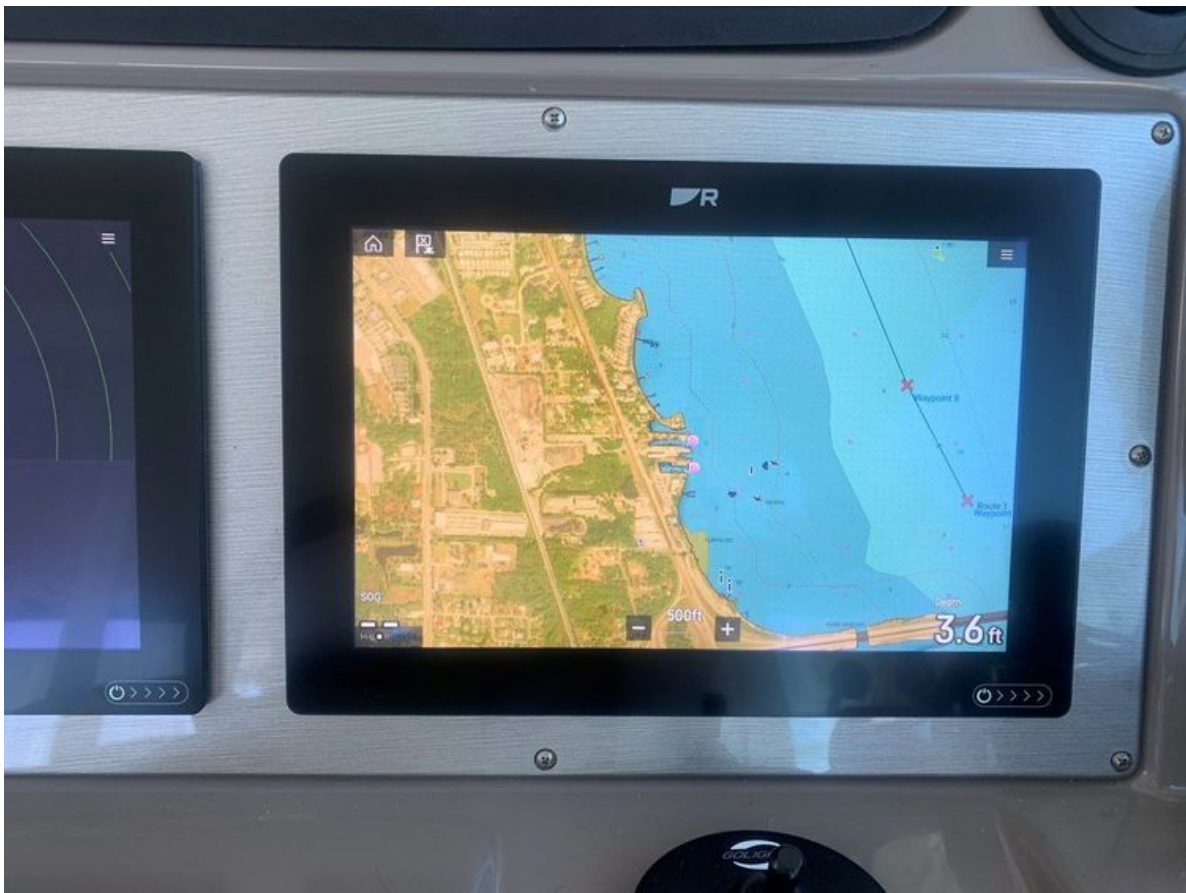
Fuel Type:

Diesel

GALLERY











CONTACTS

Shestakov Yacht Sales is a brokerage company specializing in the sale and service of yachts worldwide. The company offers services for buying and selling both new and used motor yachts, sailing vessels, and luxury superyachts. They also provide yacht registration, insurance, technical maintenance, crew selection, and charter organization services across the U.S., Canada, Latin America, the Caribbean, and the Bahamas.

The founder and lead broker of the company is Andrey Shestakov, a licensed and certified expert with extensive experience in marine engineering and shipbuilding.

The company has an extensive network of partnerships with major yacht manufacturers worldwide and provides services in multiple languages, including Russian, Ukrainian, Spanish, and English. The office is in Dania Beach, Florida, USA.

For more information and to view available yachts, you can visit the company's official website: <https://shestakovyachtsales.com>

Contact details

Phone: +1(954)274-4435

Email: andrey@shestakovyachtsales.com

Address



1380 Weeping Willow Way, Hollywood,
Florida 33019