



SHESTAKOV

Yacht Sales

## FLYBRIDGE MOTORYACHT - CUSTOM



**Builder:**

CUSTOM

**Model:**

Flybridge MotorYacht

**LOA:**

91' 0" (27.76 m)

**Min Draft:**

8' 2" (2.50 m)

**Beam:**

22' 0" (6.71 m)

**Cruise Speed:**

18 kn / 20.71 mph

**Max Speed:**

22 kn / 25.32 mph

**Water Capacity:**

600 Gallons

**Fuel Capacity:**

1500 Gallons

**Sleeps:**

7

**Total Heads:**

5

**Hull Material:**

Aluminum Yachts

If you would like to buy a yacht **FLYBRIDGE MOTORYACHT - CUSTOM** or would like help, please call +1(954)274-4435 or visit [shestakovyachtsales.com](http://shestakovyachtsales.com)

---

# TABLE OF CONTENTS

---

<b>OVERVIEW .....</b>	<b>3</b>
<b>Selecting a Flybridge MotorYacht .....</b>	<b>3</b>
<b>Features of the Model .....</b>	<b>3</b>
<b>Technical Specifications .....</b>	<b>4</b>
<b>Pricing and Ordering .....</b>	<b>4</b>
<b>Questions and Answers .....</b>	<b>4</b>
<b>Owner Experience Review .....</b>	<b>5</b>
<b>Pros and Cons .....</b>	<b>6</b>
<b>Comparison with Other Models .....</b>	<b>7</b>
<b>SPECIFICATIONS .....</b>	<b>8</b>
<b>GALLERY .....</b>	<b>9</b>
<b>CONTACTS .....</b>	<b>14</b>

## OVERVIEW

---

Presenting the Flybridge MotorYacht from CUSTOM — a custom-built motor yacht within the wider motor yachts class, featuring an aluminum hull and aluminum deck. Represented by Andrey Shestakov and the team at Shestakov Yacht Sales, this 91 ft vessel combines assured performance with spacious accommodations designed for seven.

### Selecting a Flybridge MotorYacht

---

Owners who prioritize sturdy metal construction and a well-rounded performance profile will find the Flybridge MotorYacht appealing. With an overall length of 91 ft (27.76 m), a beam of 22 ft (6.71 m) and a draft of 8.202 ft (2.5 m), it delivers stability and scale suitable for coastal runs and longer voyages. Propulsion is provided by three Yanmar inboard diesel units, producing a comfortable cruising pace of 18 kn (20.71 mph) and a top end of 22 kn (25.32 mph). Positioned in the motor yachts segment, this aluminum-built yacht is tailored for owners seeking practical capacity and dependable construction.

### Features of the Model

---

- Three Yanmar inboard diesel engines (3 total) supplying reliable, efficient thrust
- Aluminum hull and aluminum deck for long-term durability and lower structural weight
- LOA 91 ft (27.76 m); beam 22 ft (6.71 m); draft 8.202 ft (2.5 m)
- Typical cruise 18 kn (20.71 mph); maximum speed 22 kn (25.32 mph)
- Accommodation for 7 guests and 5 heads to support comfortable liveaboard arrangements

- Fuel tanks sized to 1,500 gal and freshwater capacity of 600 gal to extend cruising range

## Technical Specifications

---

- Builder: CUSTOM
- Model: Flybridge MotorYacht
- Classification: motor yacht | motor yachts
- Hull: aluminum hull; Deck: Aluminum
- LOA: 91 ft (27.76 m)
- Beam: 22 ft (6.71 m)
- Draft: 8.202 ft (2.5 m)
- Engines: 3 x Yanmar, Inboard, Diesel
- Cruising speed: 18 kn (20.71 mph)
- Maximum speed: 22 kn (25.32 mph)
- Sleeps: 7
- Heads: 5
- Fuel capacity: 1,500 gal
- Water capacity: 600 gal

## Pricing and Ordering

---

For pricing details, availability updates, or to arrange a viewing of the Flybridge MotorYacht by CUSTOM, please reach out to Andrey Shestakov at Shestakov Yacht Sales. Our brokerage team will assist with a full review of specifications and guide you through the purchasing process.

## Questions and Answers

---

- What type of yacht is this model? The Flybridge MotorYacht is categorized as

a motor yacht in the motor yachts category, and it is constructed with an aluminum hull.

- What are the speeds and engine setup? Equipped with **three Yanmar inboard diesel** engines, this yacht achieves a **cruising speed** of 18 kn (20.71 mph) and a **maximum speed** of 22 kn (25.32 mph).
- What are the main dimensions? The yacht measures **LOA** 91 ft (27.76 m), with a **beam** of 22 ft (6.71 m) and a **draft** of 8.202 ft (2.5 m).
- How many people can stay aboard comfortably? Accommodation is arranged to **sleep 7** , supported by **5 heads** , offering practical comfort for guests and crew.
- What are the capacities and construction materials? **Fuel capacity** is 1,500 gal and **water capacity** is 600 gal. The vessel is built with an aluminum construction hull and an Aluminum deck, crafted by CUSTOM.

## Owner Experience Review

---

Prospective buyers surveying the Flybridge MotorYacht from CUSTOM will see brokered listings and refit histories that position the design for family cruising, full-time liveaboard use, and commercial charter possibilities. The 2009 hull named 'Island Soul' is presented as having interior volume comparable to larger yachts, with reported ceiling heights exceeding eight feet, a four-cabin layout with five heads, an expansive salon, and a modernized galley centered around an island.

The yacht's day-use credentials are strong as well, with listings claiming roughly ~1,800 sq ft of HVAC-conditioned living space and an ample aft deck/tender area designed to host larger groups comfortably.

Underway performance for the example listing is marketed at an ~18-knot cruising pace and an ~22-knot top end, driven by triple Yanmar 6SY STP engines coupled to Hamilton jet drives. Post-refit notes emphasize a sporty

feel and improved low-speed control via upgraded joystick interfaces; nevertheless, owner commentary on public forums warns that handling characteristics can differ across custom flybridge hulls, so a sea trial on the specific boat is essential to set realistic expectations.

Maintenance and ownership tend to require careful planning. Documented service between 2018–2023 includes substantial mechanical and electronics overhauls, jet-drive servicing, and joystick hardware/software enhancements; listings also reference approximately 1,400 engine hours with supporting receipts. The combination of three engines and jet drives translates to higher recurring service expenses and a reliance on specialized technicians, while bespoke systems on a custom build can complicate parts sourcing and future renovation efforts.

## Pros and Cons

---

- Generous interior volume with ceilings above 8 ft, a four-cabin layout and five heads makes it well-suited to family cruising and liveaboard lifestyles.
- Configured for turnkey chartering, weekend hospitality, and sizeable day-use events with ~1,800 sq ft of HVAC living area and a large aft deck/tender zone.
- Advertised cruise of ~18 knots and top speed of ~22 knots, with jet-drive joystick controls delivering notable performance and handling for its class.
- The triple-engine and jet-drive configuration increases service complexity and raises ongoing maintenance costs.
- Custom-built systems on bespoke yachts can complicate sourcing replacement parts and make future retrofits more challenging.
- Ride and handling characteristics may vary between individual custom examples, underscoring the importance of thorough sea trials and surveys.

## Comparison with Other Models

Model	LOA	Beam	Draft	Speed (Cruising/Max)	Gross Tonnage
Flybridge MotorYacht	91' 0" (27.76 m)	22' 0" (6.71 m)	8' 2" (2.50 m)	18 kn / 22 kn	
3 Masted Schooner	167' 0" (50.90 m)	32' 0" (9.75 m)	30' 11" (9.42 m) – 59' 1" (18 m)	9 kn	
77ft Custom Norlin Cutter Sloop	76' 0" (23.34 m)	18' 0" (5.59 m)	28' 12" (8.83 m)	8 kn / 11 kn	
Floe Craft Afina 3950	39' 0" (11.89 m)	11' 0" (3.35 m)	5' 6" (1.67 m) – 9' 10" (3 m)		18500
51 Mini Super Yacht	51' 0" (15.54 m)	14' 0" (4.27 m)	11' 6" (3.50 m)	20 kn / 23 kn	
Benetti 105	106' 0" (32.50 m)	19' 0" (5.97 m)	8' 0" (2.44 m)	12 kn / 16 kn	109
170 Commercial Crew Boat	170' 0" (51.82 m)	30' 0" (9.14 m)	21' 1" (6.42 m)	22 kn / 24 kn	
Commercial LCU	119' 0" (36.30 m)	34' 0" (10.39 m)	9' 0" (2.75 m) – 17' 3" (5.25 m)		
PK50	164' 0" (50 m)	28' 0" (8.61 m)			487
Sports Cat 44	44' 0" (13.41 m)	14' 0" (4.27 m)	9' 10" (3 m)		

# SPECIFICATIONS

---

**LOA:**

91' 0" (27.76 m)

**Beam:**

22' 0" (6.71 m)

**Cruise Speed:**

18 kn / 20.71 mph

**Water Capacity:**

600 Gallons

**Sleeps:**

7

**Hull Material:**

Aluminum Yachts

**Engines:**

3

**Engine Type:**

Inboard

**Min Draft:**

8' 2" (2.50 m)

**Max Speed:**

22 kn / 25.32 mph

**Fuel Capacity:**

1500 Gallons

**Total Heads:**

5

**Deck Material:**

Aluminum

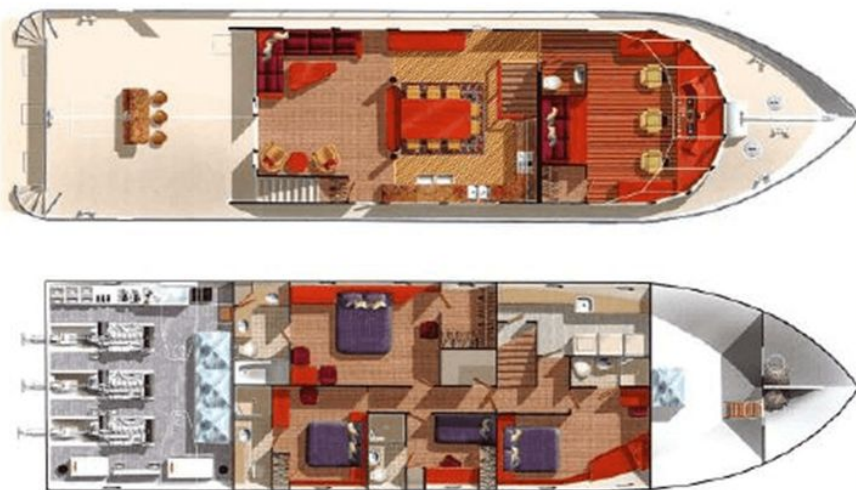
**Manufacturer:**

Yanmar

**Fuel Type:**

Diesel

# GALLERY











# CONTACTS

---

Shestakov Yacht Sales is a brokerage company specializing in the sale and service of yachts worldwide. The company offers services for buying and selling both new and used motor yachts, sailing vessels, and luxury superyachts. They also provide yacht registration, insurance, technical maintenance, crew selection, and charter organization services across the U.S., Canada, Latin America, the Caribbean, and the Bahamas.

The founder and lead broker of the company is Andrey Shestakov, a licensed and certified expert with extensive experience in marine engineering and shipbuilding.

The company has an extensive network of partnerships with major yacht manufacturers worldwide and provides services in multiple languages, including Russian, Ukrainian, Spanish, and English. The office is in Dania Beach, Florida, USA.

For more information and to view available yachts, you can visit the company's official website: <https://shestakovyachtsales.com>

## Contact details

---

**Phone:** +1(954)274-4435

**Email:** [andrey@shestakovyachtsales.com](mailto:andrey@shestakovyachtsales.com)

## Address

---



1380 Weeping Willow Way, Hollywood,  
Florida 33019