



SHESTAKOV

Yacht Sales

HAKODATE SHIPYARD – CUSTOM



Builder:

CUSTOM

Model:

Hakodate Shipyard

LOA:

196' 0" (60 m)

Beam:

28' 0" (8.70 m)

Max Draft:

13' 9" (4.20 m)

Cruise Speed:

8 kn / 9.21 mph

Max Speed:

10 kn / 11.51 mph

Gross Tonnage:

764 Pounds

Water Capacity:

3698.41 Gallons

Fuel Capacity:

47550.97 Gallons

Hull Material:

Steel Yachts

Deck Material:

Steel

If you would like to buy a yacht **HAKODATE SHIPYARD – CUSTOM** or would like help, please call +1(954)274-4435 or visit shestakovyachtsales.com

TABLE OF CONTENTS

OVERVIEW	3
Selecting a Hakodate Shipyard	3
Features of the Model	3
Technical Specifications	4
Pricing and Ordering	4
Questions and Answers	5
Owner Experience Review	5
Pros and Cons	6
Comparison with Other Models	7
SPECIFICATIONS	8
GALLERY	9
CONTACTS	14

OVERVIEW

Built for long-haul voyages and bluewater exploration, the Hakodate Shipyard from CUSTOM is presented as a rugged motor yacht in the expedition category. Constructed with a steel hull and steel decks, this design balances seagoing robustness with practical interior volume and range. The vessel is offered through Andrey Shestakov and the team at Shestakov Yacht Sales, combining bluewater capability with usable onboard space.

Selecting a Hakodate Shipyard

Opting for the Hakodate Shipyard signals an emphasis on durability, payload capacity, and comfortable seakeeping. With an LOA of 196 ft (60 m), a 28 ft (8.7 m) beam and a maximum draft of 13.78 ft (4.2 m), the yacht provides 764 gross tons of internal volume for gear, stores, and guest accommodations for up to 14 people. Propulsion is provided by a single Niigata inboard diesel optimized for steady ocean passages, with a cruising speed of about 8 kn (9.21 mph) and a top speed near 10 kn (11.51 mph). Large tanks—47,550.97 gal fuel and 3,698.41 gal water—support extended expedition profiles. For arrangement, access, and expert advice, contact Andrey Shestakov at Shestakov Yacht Sales.

Features of the Model

- True motor yacht heritage adapted for serious expedition cruising.
- Robust steel construction including steel decks to maximize longevity and maintainability.
- Propulsion: 1 x Niigata, Inboard, Diesel — a straightforward, serviceable configuration.
- Seaworthy proportions: 196 ft LOA, 28 ft beam, 13.78 ft maximum draft.
- 764 GT delivering ample storage and living volume; berths for up to 14

guests.

- Tankage suited to long legs: 47,550.97 gal fuel capacity; 3,698.41 gal of water.
- Passage performance skewed toward efficiency: approximately 8 kn cruise and 10 kn maximum.

Technical Specifications

- Builder: CUSTOM
- Model: Hakodate Shipyard
- Category: motor yacht; expedition yacht
- Hull: steel
- Deck material: Steel
- LOA: 196 ft (60 m)
- Beam: 28 ft (8.7 m)
- Draft (max): 13.78 ft (4.2 m)
- Gross tonnage: 764 GT
- Engines: 1 x Niigata, Inboard, Diesel
- Speed (cruise): 8 kn (9.21 mph)
- Speed (max): 10 kn (11.51 mph)
- Fuel capacity: 47,550.97 gal
- Water capacity: 3,698.41 gal
- Accommodation: up to 14

Pricing and Ordering

Pricing and delivery timelines for the Hakodate Shipyard are provided on request. To review detailed specifications, arrange inspections, or receive transaction assistance, get in touch with Andrey Shestakov at Shestakov Yacht Sales. Our brokerage will manage viewings, paperwork, and negotiation strategy tailored to your objectives.

Questions and Answers

Q: What type of yacht is the Hakodate Shipyard? A: It is a motor yacht engineered for the expedition segment with a steel hull, prioritizing **range** , **strength** , and **reliability** .

Q: What are the key dimensions and volume? A: The vessel measures 196 ft (60 m) LOA with a 28 ft (8.7 m) beam and a maximum draft of 13.78 ft (4.2 m), and it registers 764 GT, affording **generous internal volume** for gear, stores, and guest spaces.

Q: What propulsion and performance can I expect? A: The yacht is driven by a single Niigata **inboard diesel** , delivering an economical **8 kn** (9.21 mph) cruise speed and a **10 kn** (11.51 mph) top speed—well suited for steady passagemaking.

Q: How many people can it accommodate and what are the capacities? A: Accommodation is configured for **up to 14** guests, with tankage of **47,550.97 gal** fuel and **3,698.41 gal** water to sustain extended operations.

Q: How do I arrange an inspection or make an offer? A: Contact **Andrey Shestakov** at **Shestakov Yacht Sales** to schedule viewings, receive documentation, and obtain full **brokerage support** for the Hakodate Shipyard.

Owner Experience Review

Sale materials consistently describe the Hakodate Shipyard by CUSTOM as an expedition/explorer platform purpose-built for long-range work, featuring a rugged steel hull. The propulsion layout is a single inboard Niigata 12 cylinder diesel with a rating reported at about 1,400 HP, matching a displacement-style cruising profile—typically around 8 knots with a top speed just under 10 knots, as noted in multiple brokerage specifications.

Internally, the arrangement is aimed at private long-range cruising and hospitality, laid out with seven cabins to host as many as 14 guests and service levels supported by an estimated crew complement of around 18. Listings repeatedly cite a 2014 owner-directed conversion/refit that concentrated on upgraded interiors and enlarged social areas. Common amenities highlighted include a pool, multiple bars, a TV/cinema lounge, a gym, a sauna, and a massage room—configured to accommodate larger guest parties comfortably for extended periods.

From a maintenance and operations standpoint, the single screw 60 m steel hull suggests the usual schedule of periodic haulouts and yard intervals expected for yachts of this scale and construction. Availability of Niigata spare parts and authorized service can vary by region, and there are no publicly posted long term owner maintenance logs or recurring issue summaries to use as a benchmarking resource, so prospective owners should rely on the provided specification sheets and documented refit history when setting expectations.

Pros and Cons

- Expedition/explorer character offering true long range capability and a durable steel construction.
- Seven cabins accommodating 14 guests, complemented by a 2014 refit and social amenities such as a pool, multiple bars, a cinema lounge, gym, and sauna for comfortable large group hosting.
- Crew capacity around 18 enables hotel style service during extended voyages.
- Cruising performance centered at roughly 8 knots with a maximum near 10 knots reduces flexibility for fast transits.
- Niigata 12 cylinder parts and servicing may be dependent on regional support networks.

• Single screw propulsion on a 60 m steel hull implies significant, periodic yard time typical for yachts of this size, and there are limited public owner reports documenting real world upkeep.

Comparison with Other Models

Model	LOA	Beam	Draft	Speed (Cruising/Max)	Gross Tonnage
Hakodate Shipyard	196' 0" (60 m)	28' 0" (8.70 m)	13' 9" (4.20 m)	8 kn / 10 kn	764
3 Masted Schooner	167' 0" (50.90 m)	32' 0" (9.75 m)	30' 11" (9.42 m) – 59' 1" (18 m)	9 kn	
77ft Custom Norlin Cutter Sloop	76' 0" (23.34 m)	18' 0" (5.59 m)	28' 12" (8.83 m)	8 kn / 11 kn	
Floe Craft Afina 3950	39' 0" (11.89 m)	11' 0" (3.35 m)	5' 6" (1.67 m) – 9' 10" (3 m)		18500
51 Mini Super Yacht	51' 0" (15.54 m)	14' 0" (4.27 m)	11' 6" (3.50 m)	20 kn / 23 kn	
Benetti 105	106' 0" (32.50 m)	19' 0" (5.97 m)	8' 0" (2.44 m)	12 kn / 16 kn	109
170 Commercial Crew Boat	170' 0" (51.82 m)	30' 0" (9.14 m)	21' 1" (6.42 m)	22 kn / 24 kn	
Commercial LCU	119' 0" (36.30 m)	34' 0" (10.39 m)	9' 0" (2.75 m) – 17' 3" (5.25 m)		
PK50	164' 0" (50 m)	28' 0" (8.61 m)			487
Sports Cat 44	44' 0" (13.41 m)	14' 0" (4.27 m)	9' 10" (3 m)		

SPECIFICATIONS

LOA:

196' 0" (60 m)

Max Draft:

13' 9" (4.20 m)

Cruise Speed:

8 kn / 9.21 mph

Gross Tonnage:

764 Pounds

Fuel Capacity:

47550.97 Gallons

Hull Material:

Steel Yachts

Engines:

1

Engine Type:

Inboard

Beam:

28' 0" (8.70 m)

Max Speed:

10 kn / 11.51 mph

Water Capacity:

3698.41 Gallons

Deck Material:

Steel

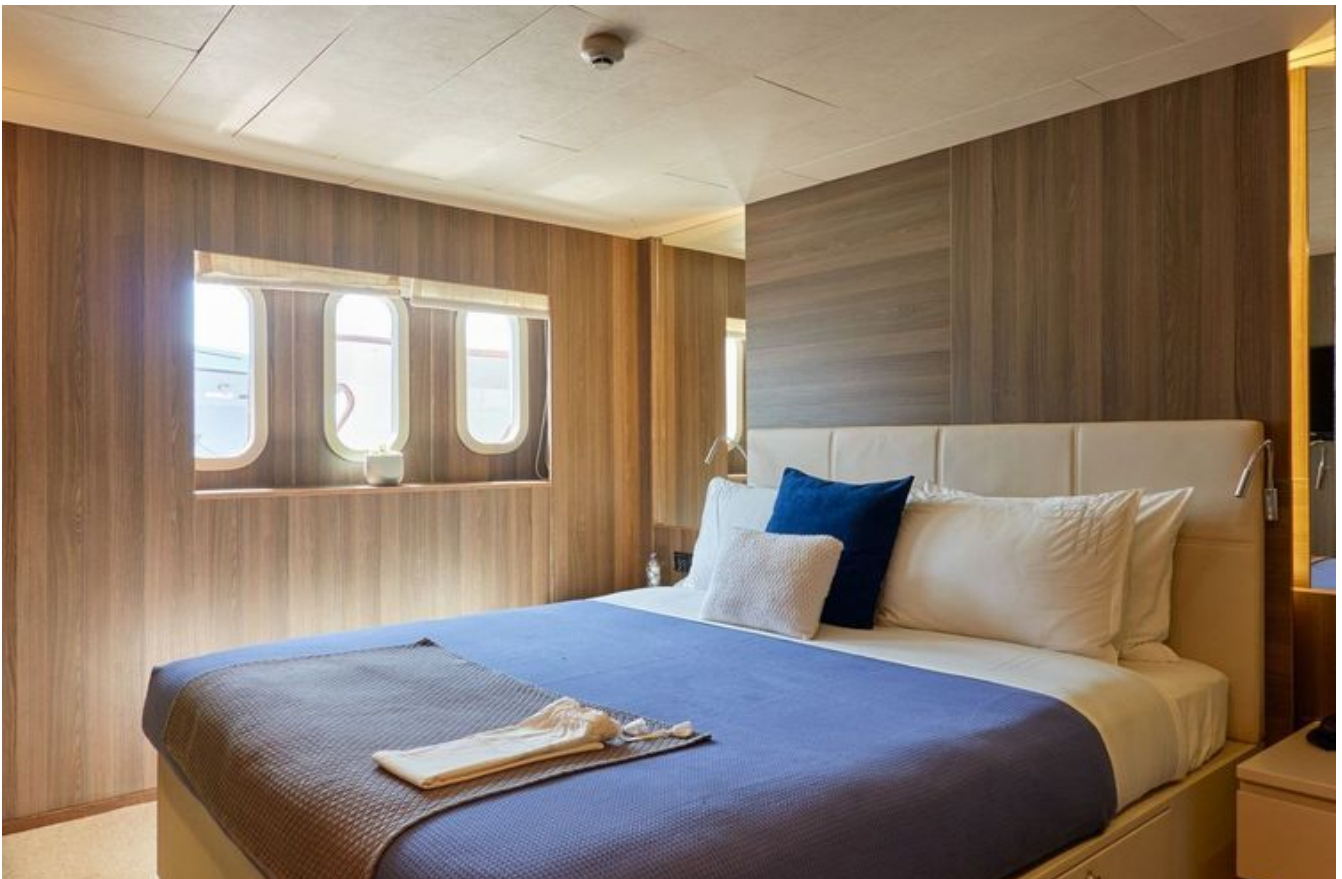
Manufacturer:

Niigata

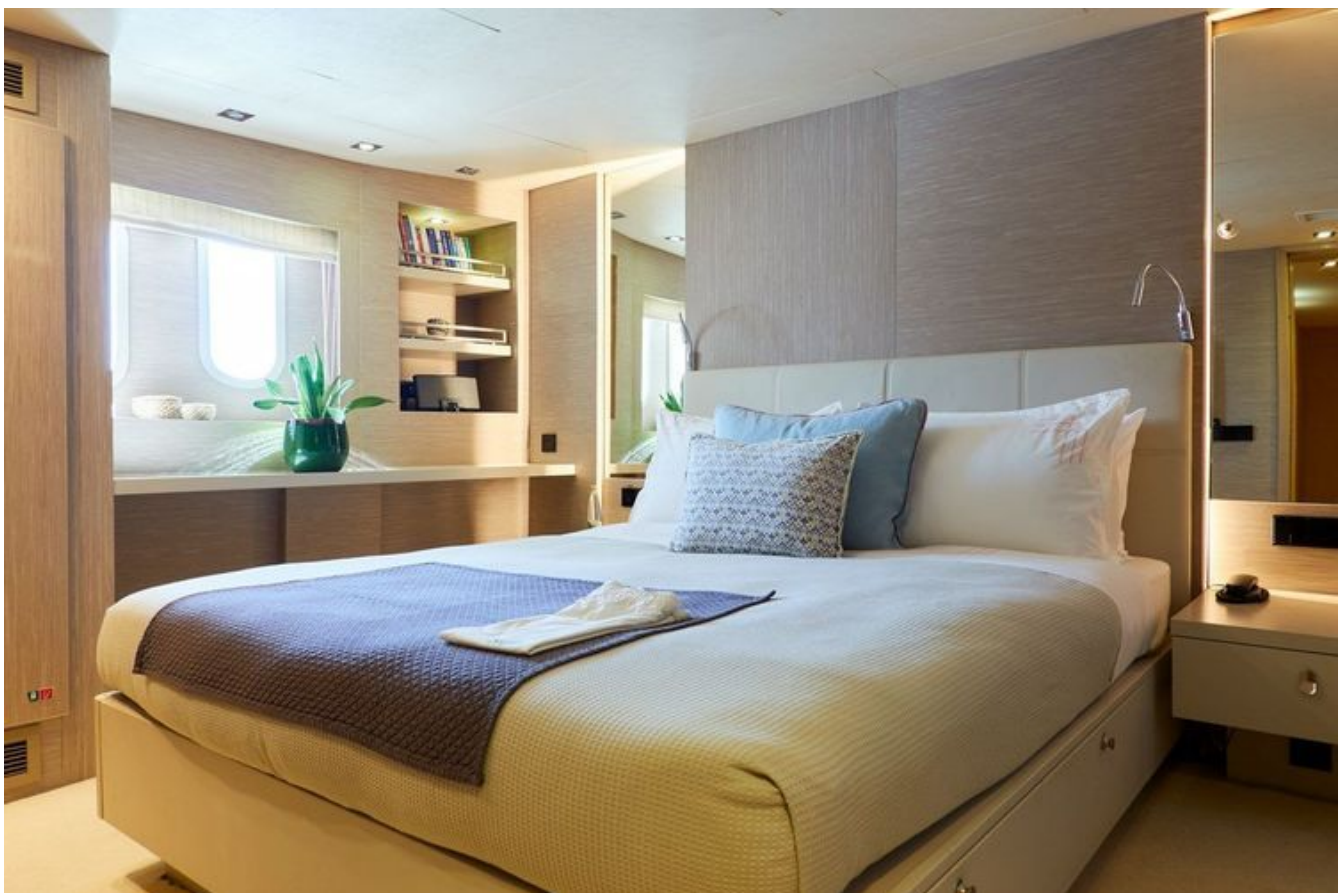
Fuel Type:

Diesel

GALLERY











CONTACTS

Shestakov Yacht Sales is a brokerage company specializing in the sale and service of yachts worldwide. The company offers services for buying and selling both new and used motor yachts, sailing vessels, and luxury superyachts. They also provide yacht registration, insurance, technical maintenance, crew selection, and charter organization services across the U.S., Canada, Latin America, the Caribbean, and the Bahamas.

The founder and lead broker of the company is Andrey Shestakov, a licensed and certified expert with extensive experience in marine engineering and shipbuilding.

The company has an extensive network of partnerships with major yacht manufacturers worldwide and provides services in multiple languages, including Russian, Ukrainian, Spanish, and English. The office is in Dania Beach, Florida, USA.

For more information and to view available yachts, you can visit the company's official website: <https://shestakovyachtsales.com>

Contact details

Phone: +1(954)274-4435

Email: andrey@shestakovyachtsales.com

Address



1380 Weeping Willow Way, Hollywood,
Florida 33019