



SHESTAKOV

Yacht Sales

DL-35 - DL YACHTS - DREAMLINE



Builder:

DL YACHTS - DREAMLINE

Model:

DL-35

LOA:

117' 0" (35.90 m)

Min Draft:

4' 11" (1.49 m)

Beam:

24' 0" (7.47 m)

Max Draft:

7' 3" (2.20 m)

Cruise Speed:

12 kn / 13.81 mph

Max Speed:

22 kn / 25.32 mph

Gross Tonnage:

207 Pounds

Water Capacity:

581.18 Gallons

Fuel Capacity:

4490.92 Gallons

Sleeps:

10

If you would like to buy a yacht **DL-35 - DL YACHTS - DREAMLINE** or would like help, please call +1(954)274-4435 or visit shestakovyachtsales.com

TABLE OF CONTENTS

OVERVIEW	3
Selecting a DL-35	3
Features of the Model	3
Technical Specifications	4
Pricing and Ordering	4
Questions and Answers	5
Owner Experience Review	5
Pros and Cons	6
Comparison with Other Models	7
SPECIFICATIONS	8
GALLERY	9
CONTACTS	14

OVERVIEW

The DL-35 from DL YACHTS - DREAMLINE is a modern motor yacht built with a fiberglass and plastic hull, crafted to deliver relaxed family cruising alongside sophisticated onboard entertaining. Presented by Shestakov Yacht Sales and listed by broker Andrey Shestakov, this 35.9 m yacht marries tried-and-true naval engineering with refined Italian-inspired aesthetics.

Selecting a DL-35

Opt for the DL-35 when you want a well-proportioned vessel in the 117 ft class that balances interior volume, onboard amenities, and on-water performance. With a 7.47 m beam and a gross tonnage of 207 GT, the design creates spacious guest zones while sustaining fuel-efficient operation at a 12-knot cruise and reaching up to 22 knots when needed. Accommodations for professional crew (3 cabins / 6 berths) enable elevated service for private ownership. The hull concept from Arrabito Naval Architects combined with interiors by Team4Design gives the yacht a contemporary, assured presence suited to extended stays at sea.

Features of the Model

- Twin MTU inboard diesel powerplants provide reliable thrust, supporting a comfortable 12 kn cruising pace and a 22 kn maximum.
- Efficient use of the 207 GT of volume allows accommodation for up to 10 guests with 5 heads and dedicated crew quarters (3 cabins / 6 beds).
- The fiberglass and plastic monohull construction with a GRP deck offers a strong, lightweight structure with straightforward maintenance.
- Interior finishes by Team4Design create an elevated onboard atmosphere, while Arrabito Naval Architects' hull lines deliver efficiency and a smooth ride.

- Large tank capacities (approximately 4,490.92 gal fuel and 581.18 gal fresh water) extend the yacht's range between resupply stops.

Technical Specifications

- Model: DL-35
- Builder: DL YACHTS - DREAMLINE
- Type: motor yacht
- Hull material: fiberglass and plastic
- Deck material: GRP
- Hull configuration: Monohull
- Naval architect: Arrabito Naval Architects
- Interior designer: Team4Design
- LOA: 117 ft (35.9 m)
- Beam: 24 ft (7.47 m)
- Draft (min/max): 4.888 ft (1.49 m) / 7.218 ft (2.2 m)
- Gross tonnage: 207 GT
- Engines: 2 x MTU, Inboard, Diesel
- Cruising speed: 12 kn (13.81 mph)
- Maximum speed: 22 kn (25.32 mph)
- Guests/sleeps: up to 10 / 10
- Heads: 5
- Crew: 3 cabins / 6 beds
- Fuel capacity: 4,490.92 gal
- Fresh water capacity: 581.18 gal

Pricing and Ordering

To obtain pricing, current availability, and build-slot information for the DL-35 from DL YACHTS - DREAMLINE, please contact Shestakov Yacht Sales. Broker

Andrey Shestakov will assist with specification choices, factory options, and the purchasing process to ensure the yacht is configured to match your cruising requirements.

Questions and Answers

Q: What are the performance figures of the DL-35? A: The yacht's published performance is a **cruising speed** of 12 knots (13.81 mph) with a **top speed** of 22 knots (25.32 mph).

Q: How many guests and crew can the DL-35 accommodate? A: The vessel provides **accommodation** for up to 10 guests (10 berths) with **5 heads** ; **crew** quarters consist of 3 cabins with 6 beds.

Q: What is the hull and deck construction? A: Construction consists of a fiberglass and plastic hull in a **monohull** arrangement, paired with a **GRP** deck.

Q: Who designed the yacht? A: The **hull design** is credited to Arrabito Naval Architects while the **interior design** is executed by Team4Design.

Q: What engines and capacities does it have? A: The yacht is powered by **2 x MTU inboard diesel** engines; it carries **fuel** capacity of 4,490.92 gal and **fresh water** capacity of 581.18 gal. For acquisition and specification details, contact Andrey Shestakov at Shestakov Yacht Sales.

Owner Experience Review

Based on the published specs and broker materials, the DL-35 from DL YACHTS - DREAMLINE is engineered to suit both private ownership and charter operations. The layout emphasizes outdoor living and owner seclusion: extensive sundeck amenities including a bar, dining area, sun loungers and a jacuzzi, a retractable hardtop, a fold-down main-deck balcony, and an ample

cockpit create varied alfresco entertaining spaces. Inside, a main-deck full-beam owner's stateroom offers roughly 180° views and direct access to exterior living areas. A five-cabin guest plan for 10 and bespoke interior choices reinforce the model's luxury and customization focus.

On passage, the Arrabito "lama chine / waveless" hull form is promoted to lower fuel consumption and enhance seakeeping, with manufacturer claims of reduced noise and vibration across speed ranges; an optional Siemens hybrid/E-Power system is offered for very quiet operation. Published numbers list a maximum near 22 knots and an efficient cruising band around 10–12 knots, with about 1,800 NM quoted at roughly 10 knots to enable extended passages and island-hopping itineraries.

Maintenance considerations reflect the specified propulsion: MTU units (12V2000s standard, with 16V2000s as an option) and the added complexity potential of hybrid systems suggest MTU-focused servicing plus specialist attention when hybrid gear is installed. Routine upkeep items—such as dual Racor filtration, gensets, zero-speed stabilizers, sizeable HVAC installations and a watermaker—indicate typical consumables and scheduled maintenance requirements; nonetheless, long-term operational feedback on the DL-35 is limited, as the model appears relatively new with few hulls widely documented.

Pros and Cons

- Proven platform for charter or private use with extensive alfresco amenities, including a sundeck fitted with a jacuzzi.
- Approximately 1,800 NM range at an economical 10-knot pace supports longer cruising itineraries.
- Main-deck full-beam owner's suite delivers about 180° panoramic views and direct exterior access for privacy and convenience.

- Performance, noise and vibration benefits are primarily manufacturer-stated and lack extensive independent long-term validation.
- MTU propulsion and optional hybrid/E Power systems can increase service complexity and may require specialized support networks.
- Limited numbers in service and few public owner reports mean long-term maintenance trends are not yet well documented.

Comparison with Other Models

Model	LOA	Beam	Draft	Speed (Cruising/Max)	Gross Tonnage
DL-35	117' 0" (35.90 m)	24' 0" (7.47 m)	4' 11" (1.49 m) – 7' 3" (2.20 m)	12 kn / 22 kn	207
DL 28	92' 0" (28.02 m)	22' 0" (6.86 m)	6' 3" (1.90 m)	10 kn	
Dreamline 26M	86' 0" (26.31 m)	22' 0" (6.88 m)	21' 4" (6.50 m) – 22' 12" (7 m)	18 kn / 23 kn	145
N/A	98' 0" (30 m)	23' 0" (7.20 m)	7' 3" (2.20 m)	17 kn / 28 kn	178
Dreamline 26	85' 0" (26 m)	21' 0" (6.65 m)	9' 3" (2.83 m)	17 kn / 24 kn	145

SPECIFICATIONS

LOA:

117' 0" (35.90 m)

Beam:

24' 0" (7.47 m)

Cruise Speed:

12 kn / 13.81 mph

Gross Tonnage:

207 Pounds

Fuel Capacity:

4490.92 Gallons

Sleeps:

10

Crew Cabin:

3

Hull Material:

Fiberglass and Plastic Yachts

Hull Configuration:

Monohull

Interior Designer:

Team4Design

Engines:

2

Engine Type:

Inboard

Min Draft:

4' 11" (1.49 m)

Max Draft:

7' 3" (2.20 m)

Max Speed:

22 kn / 25.32 mph

Water Capacity:

581.18 Gallons

Total Heads:

5

Crew Berths:

6

Deck Material:

GRP

Hull Designer:

Arrabito Naval Architects

Manufacturer:

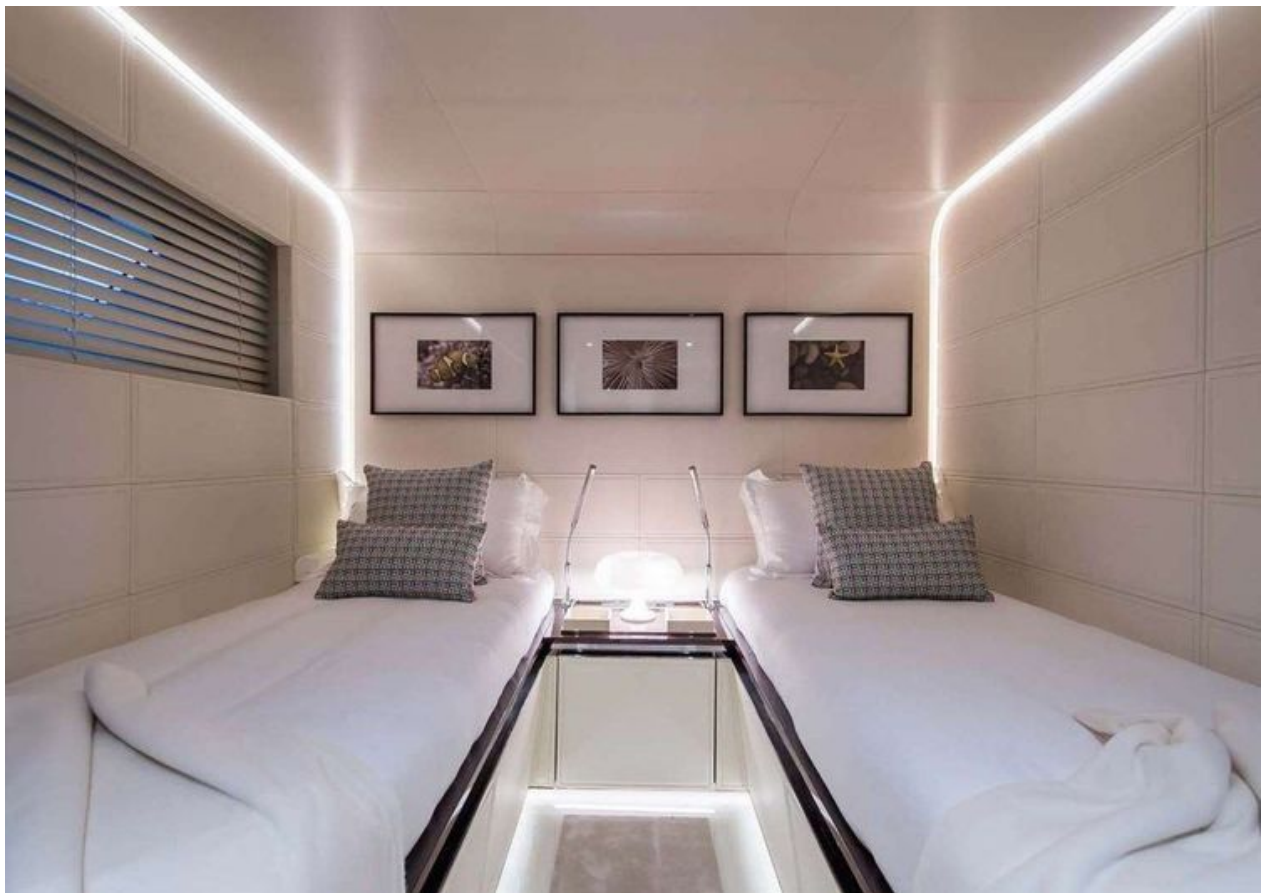
MTU

Fuel Type:

Diesel

GALLERY











CONTACTS

Shestakov Yacht Sales is a brokerage company specializing in the sale and service of yachts worldwide. The company offers services for buying and selling both new and used motor yachts, sailing vessels, and luxury superyachts. They also provide yacht registration, insurance, technical maintenance, crew selection, and charter organization services across the U.S., Canada, Latin America, the Caribbean, and the Bahamas.

The founder and lead broker of the company is Andrey Shestakov, a licensed and certified expert with extensive experience in marine engineering and shipbuilding.

The company has an extensive network of partnerships with major yacht manufacturers worldwide and provides services in multiple languages, including Russian, Ukrainian, Spanish, and English. The office is in Dania Beach, Florida, USA.

For more information and to view available yachts, you can visit the company's official website: <https://shestakovyachtsales.com>

Contact details

Phone: +1(954)274-4435

Email: andrey@shestakovyachtsales.com

Address



1380 Weeping Willow Way, Hollywood,
Florida 33019