



SHESTAKOV

Yacht Sales

120 SWATH - EASTERN SHIPBUILDING GROUP



Builder:

EASTERN SHIPBUILDING GROUP

Model:

120 Swath

LOA:

120' 0" (36.58 m)

Min Draft:

32' 10" (10 m)

Beam:

44' 0" (13.41 m)

Max Draft:

42' 8" (13 m)

Cruise Speed:

25 kn / 28.77 mph

Max Speed:

30 kn / 34.52 mph

Fuel Capacity:

17483 Gallons

Sleeps:

6

Total Heads:

2

Hull Material:

Aluminum Yachts

If you would like to buy a yacht **120 SWATH - EASTERN SHIPBUILDING GROUP** or would like help, please call +1(954)274-4435 or visit shestakovyachtsales.com

TABLE OF CONTENTS

OVERVIEW	3
Selecting a 120 Swath	3
Features of the Model	3
Technical Specifications	4
Pricing and Ordering	4
Questions and Answers	4
Owner Experience Review	5
Pros and Cons	6
Comparison with Other Models	6
SPECIFICATIONS	7
GALLERY	8
CONTACTS	13

OVERVIEW

The 120 Swath from EASTERN SHIPBUILDING GROUP is a motor yacht that sits within the motor yachts category and is built to the aluminum hull class standard. Combining large-scale dimensions with assured on-water performance, this model is presented for purchase and ownership planning by Shestakov Yacht Sales, led by broker Andrey Shestakov.

Selecting a 120 Swath

Deciding on a 120 Swath depends on matching your operational needs to its size and capabilities. At 120 ft (36.58 m) LOA with a 44 ft (13.41 m) beam, it delivers substantial internal volume for accommodations and mission equipment. Prospective owners should plan around a deep draft of roughly 32.808–42.651 ft (10–13 m), which affects marina choices and cruising grounds. Performance expectations center on a 25-knot cruising pace and a 30-knot top end, driven by twin inboard diesel powerplants. The layout supports up to 6 people sleeping aboard with 2 heads. Engage Shestakov Yacht Sales early to tailor specifications and operational plans to your cruising profile.

Features of the Model

- Length overall of 120 ft (36.58 m) paired with a wide 44 ft (13.41 m) beam
- Draft range of about 32.808–42.651 ft (10–13 m) for assured stability in varying sea states
- Performance profile: 25 kn cruise and 30 kn max, translating to 28.77 mph and 34.52 mph respectively
- Power package: 2 inboard diesel engines by Alli for dependable propulsion
- Substantial fuel capacity of 17,483 gal to enable extended missions
- Accommodations for 6 with 2 heads for guest and crew convenience

- Construction: hull in the aluminum hull class category; deck in Aluminum
- Built by EASTERN SHIPBUILDING GROUP

Technical Specifications

- LOA: 120 ft (36.58 m)
- Beam: 44 ft (13.41 m)
- Draft: approx. 32.808–42.651 ft (10–13 m)
- Speed: 25 kn cruise (28.77 mph), 30 kn max (34.52 mph)
- Engines: 2 x Alli, Inboard, Diesel
- Fuel capacity: 17,483 gal
- Sleeps: 6
- Heads: 2
- Deck material: Aluminum
- Hull category: aluminum hull class

Pricing and Ordering

Specific pricing, lead times, and purchase conditions for the 120 Swath are available on inquiry. Contact Andrey Shestakov and the Shestakov Yacht Sales team to review availability, customization choices, and to coordinate next steps that meet your operational and budgetary requirements.

Questions and Answers

- Q: What are the speeds of the 120 Swath? A: The yacht offers a **cruising speed** of 25 kn (28.77 mph) and a **maximum speed** of 30 kn (34.52 mph).
- Q: How many people can stay aboard and how many heads are there? A: The layout **sleeps** 6 and provides **2 heads** for onboard comfort.
- Q: What powers this yacht? A: Propulsion comes from **2 inboard diesel**

engines by **Alli** , delivering dependable performance.

- Q: What are the principal dimensions and draft? A: **LOA** is 120 ft (36.58 m), **beam** is 44 ft (13.41 m), and **draft** ranges about 32.808–42.651 ft (10–13 m).
- Q: How do I order or arrange an inspection? A: Reach out to Andrey Shestakov at Shestakov Yacht Sales to discuss this motor yacht, confirm specifications, and organize viewing or surveys.

Owner Experience Review

Owners and operators are attracted to the 120 Swath from EASTERN SHIPBUILDING GROUP for its SWATH-derived steadiness and the usable expanse of deck. Community feedback often emphasizes a motion so settled that a filled glass would remain upright, reflecting consistently low roll and reliable performance in head seas. Brokerage records note a 1999 listing marketed as “ready for yacht conversion,” and current accommodation arrangements are modest for a 120-footer (3 cabins, 2 heads, sleeps 6), making the platform suitable for private family use or as a conversion project.

Underway reports from owners and technical observers describe a smooth, low-pitch sensation in the 20–30 knot range; brokered figures show roughly a 25 knot cruise and an approximate 30 knot maximum. The broad 44-foot beam combined with aluminum construction creates expansive working and guest zones, though the SWATH configuration’s sensitivity to loading means ballast or control systems may be required to maintain optimal trim across different displacements.

Prospective owners should expect maintenance and operating costs that typically exceed those for conventional monohulls, along with tighter machinery spaces common to vessels with submerged hull elements. The 1999 listing materials reference original Allison 501KF turbines, and brokers have noted engine removal and replacement activity (including offers involving Cat

C 18 units), indicating significant propulsion work during the vessel's history. The very deep draft reported (approximately 32'10" minimum to 42'8" maximum) constrains marina and shipyard choices and can increase haul-out and repair expenses; these observations are synthesized from listings and owner/operator commentary rather than a single standardized sea trial.

Pros and Cons

- Exceptionally stable platform with very low roll and confident head-sea behavior.
- Steady ride at 20–30 knots, with brokered specs around 25-knot cruise and 30-knot top.
- 44-foot beam and aluminum build provide generous deck space and conversion flexibility.
- Very deep draft (about 32'10" to 42'8") limits marina and shipyard access and can raise costs.
- Higher maintenance and operating costs than conventional hulls, with constrained machinery access.
- Load-sensitive behavior can require ballast/control and typically more installed power/fuel than equivalent catamarans.

Comparison with Other Models

Model	LOA	Beam	Draft	Speed (Cruising/...	Gross...
120 Swath	120' 0" (36.58 m)	44' 0" (13.41 m)	32' 10" (10 m) – 42' 8" (13 m)	25 kn / 30 kn	

SPECIFICATIONS

LOA:

120' 0" (36.58 m)

Beam:

44' 0" (13.41 m)

Cruise Speed:

25 kn / 28.77 mph

Fuel Capacity:

17483 Gallons

Sleeps:

6

Hull Material:

Aluminum Yachts

Engines:

2

Engine Type:

Inboard

Min Draft:

32' 10" (10 m)

Max Draft:

42' 8" (13 m)

Max Speed:

30 kn / 34.52 mph

Total Heads:

2

Deck Material:

Aluminum

Manufacturer:

Alli

Fuel Type:

Diesel

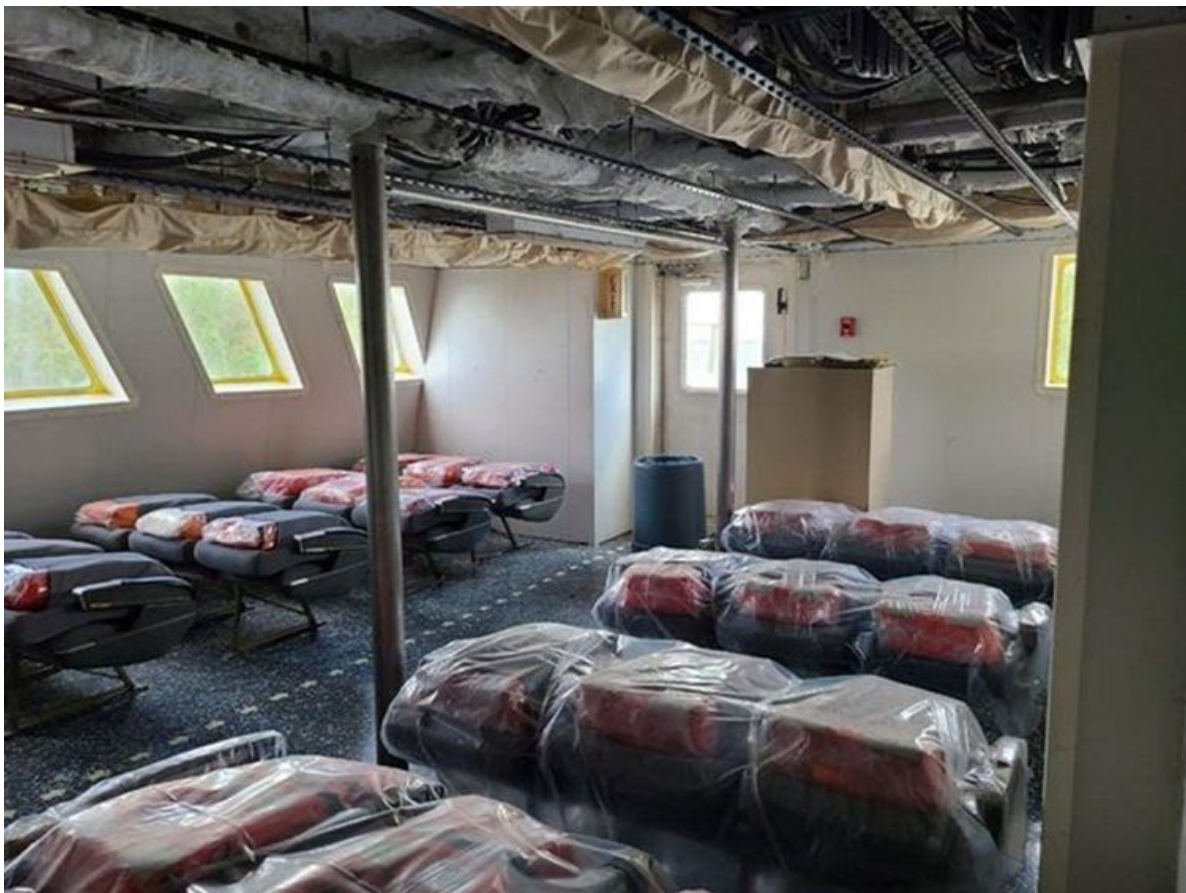
GALLERY











CONTACTS

Shestakov Yacht Sales is a brokerage company specializing in the sale and service of yachts worldwide. The company offers services for buying and selling both new and used motor yachts, sailing vessels, and luxury superyachts. They also provide yacht registration, insurance, technical maintenance, crew selection, and charter organization services across the U.S., Canada, Latin America, the Caribbean, and the Bahamas.

The founder and lead broker of the company is Andrey Shestakov, a licensed and certified expert with extensive experience in marine engineering and shipbuilding.

The company has an extensive network of partnerships with major yacht manufacturers worldwide and provides services in multiple languages, including Russian, Ukrainian, Spanish, and English. The office is in Dania Beach, Florida, USA.

For more information and to view available yachts, you can visit the company's official website: <https://shestakovyachtsales.com>

Contact details

Phone: +1(954)274-4435

Email: andrey@shestakovyachtsales.com

Address



1380 Weeping Willow Way, Hollywood,
Florida 33019