



SHESTAKOV

Yacht Sales

## 590 MOTOR YACHT – FERRETTI YACHTS



**Builder:**

Ferretti Yachts

**Model:**

590 Motor Yacht

**LOA:**

59' 0" (17.98 m)

**Beam:**

17' 0" (5.26 m)

**Max Draft:**

16' 11" (5.17 m)

**Cruise Speed:**

26 kn / 29.92 mph

**Max Speed:**

34 kn / 39.13 mph

**Water Capacity:**

174 Gallons

**Fuel Capacity:**

924 Gallons

**Total Heads:**

3

**Crew Cabin:**

1

**Crew Berths:**

1

If you would like to buy a yacht **590 MOTOR YACHT – Ferretti Yachts** or would like help, please call +1(954)274-4435 or visit [shestakovyachtsales.com](http://shestakovyachtsales.com)

---

# TABLE OF CONTENTS

---

<b>OVERVIEW .....</b>	<b>3</b>
<b>Selecting a 590 Motor Yacht .....</b>	<b>3</b>
<b>Features of the Model .....</b>	<b>3</b>
<b>Technical Specifications .....</b>	<b>4</b>
<b>Pricing and Ordering .....</b>	<b>4</b>
<b>Questions and Answers .....</b>	<b>5</b>
<b>Owner Experience Review .....</b>	<b>5</b>
<b>Pros and Cons .....</b>	<b>6</b>
<b>Comparison with Other Models .....</b>	<b>7</b>
<b>SPECIFICATIONS .....</b>	<b>8</b>
<b>GALLERY .....</b>	<b>9</b>
<b>CONTACTS .....</b>	<b>14</b>

# OVERVIEW

---

The 590 Motor Yacht from Ferretti Yachts applies Italian design DNA to a performance-minded motor yacht within the broader motor yachts category. Built on a fiberglass and plastic hull with a Deep Vee profile and penned by Ferretti, it combines assured seakeeping with spacious living areas suited to extended cruising.

## Selecting a 590 Motor Yacht

---

Opting for the 590 Motor Yacht signals a preference for a balanced mix of seagoing ability and onboard comfort. Measuring 59 ft LOA (17.98 m) with a 17 ft (5.26 m) beam, the layout delivers ample volume for family use or entertaining, while twin MAN inboard diesels provide a 26-knot cruising pace and a top end near 34 knots. The Deep Vee hull and a maximum draft of 16.951 ft (5.1666 m) contribute to confident handling when seas build. For advice on configurations, surveys, and delivery arrangements, reach out to Andrey Shestakov and the Shestakov Yacht Sales team.

## Features of the Model

---

- Performance focus: 26-knot cruising and 34-knot maximum speed make it adaptable for a variety of coastal passages.
- Twin inboard propulsion: 2 x MAN diesel engines provide dependable, efficient power for extended runs.
- Construction and design: fiberglass and plastic hull with Deep Vee hullform; deck constructed in fiberglass; hull designer credited as Ferretti.
- Capacities for time aboard: sleeps 6 across the guest cabins with 3 heads; there is separate crew accommodation comprising 1 cabin and 1 berth.
- Tankage that supports range and comfort: 924 gallons of fuel and 174 gallons

of freshwater capacity.

## Technical Specifications

---

- Classification: motor yacht in the motor yachts segment
- Hull: fiberglass and plastic hull; configuration: Deep Vee; hull designer: Ferretti
- Deck material: Fiberglass
- LOA: 59 ft (17.98 m)
- Beam: 17 ft (5.26 m)
- Max draft: 16.951 ft (5.1666 m)
- Cruise speed: 26 kn (29.92 mph)
- Max speed: 34 kn (39.13 mph)
- Engines: 2 x MAN, Inboard, Diesel
- Accommodations: 6
- Heads: 3
- Crew: 1 cabin, 1 berth
- Fuel capacity: 924 gal
- Fresh water capacity: 174 gal

## Pricing and Ordering

---

Current pricing and availability for the 590 Motor Yacht are available upon request. Shestakov Yacht Sales coordinates viewings, condition surveys, sea trials, and international delivery logistics. For a tailored consultation and assistance negotiating terms, contact Andrey Shestakov at Shestakov Yacht Sales.

## Questions and Answers

---

Q: What type of yacht is the 590 Motor Yacht? A: It is a **motor yacht** within the broader category of **motor yachts** , built on a **fiberglass and plastic hull** featuring a Deep Vee hullform for solid performance.

Q: What are the key performance figures? A: The 590 Motor Yacht lists a standard **cruise speed** of 26 kn (29.92 mph) and a **maximum speed** of 34 kn (39.13 mph).

Q: What engines power the yacht? A: Propulsion is supplied by **2 x MAN inboard diesel** engines, delivering reliable power and efficient cruise capability.

Q: How many people can stay aboard comfortably? A: The yacht provides **accommodations for 6** and includes **3 heads** , plus dedicated **crew space** with **1 cabin** and **1 berth** for professional crew or additional support.

Q: Who builds and who designed the hull? A: The vessel is constructed by **Ferretti Yachts** , with the **hull designer** listed as **Ferretti** , employing a **Deep Vee** shape and **fiberglass and plastic hull** construction.

## Owner Experience Review

---

Launched in the early 2000s, roughly 2003–2004, the 590 Motor Yacht from Ferretti Yachts is most often seen on the market as 2003–2008 models. It is popular for family cruising, weekend getaways, and crewed day or week charters. Owners and brokers note the three-cabin arrangement comfortably sleeps six and provides separate crew or utility space, making it particularly well suited to cruising in the Mediterranean and Adriatic regions.

On the water the yacht is frequently described as having a lively helm and brisk acceleration, with handling likened to a sportboat. Typical owner and test

reports indicate a cruise range around 30–32 kt and a top end near 34–35 kt with common MAN 1100/1200 engine selections; some owners regard its seakeeping as superior to the Princess 61. Sea trials often reveal that trim-tab adjustments produce minimal change in running attitude.

Accommodation-wise, owners praise the generous volume and practical layout: a spacious amidships master with a large wardrobe, a well-proportioned forward VIP, and three ensuite heads that receive ample natural light. Full galley setups are commonly fitted—frequently including a dishwasher, washer-dryer, and microwave—which makes extended stays more comfortable. Maintenance notes are mixed: an oil-change manifold simplifies routine fluid changes, but cramped engine-room access and the need to remove salon hatches for annual engine work increase service time; several owners have also reported trim-tab failures and long parts lead-times, with some opting to remove tabs when replacements were difficult to obtain.

## Pros and Cons

---

- Responsive helm and sporty acceleration, with handling compared to a sportboat.
- Owners and tests commonly report a 30–32 kt cruise and roughly 34–35 kt top speed with typical MAN 1100/1200 installations.
- Generous three-cabin accommodation plan with an amidships master and three ensuites, and full galley appliances are often installed for longer stays.
- Annual engine servicing generally requires removal of the salon hatches.
- Tight engine-room access can increase the time and expense for certain repairs and survey tasks.
- Some boats have experienced trim-tab failures and long parts lead-times.

## Comparison with Other Models

Model	LOA	Beam	Draft	Speed (Cruising/ Max)	Gross Tonnage
590 Motor Yacht	59' 0" (17.98 m)	17' 0" (5.26 m)	16' 11" (5.17 m)	26 kn / 34 kn	
FERRETI 720	71' 0" (21.78 m)	19' 0" (5.80 m)	9' 7" (2.93 m)	30 kn / 35 kn	57.4
CUSTOM LINE 97	97' 0" (29.70 m)	28' 0" (8.51 m)	5' 11" (1.80 m)	16 kn / 25 kn	176
80	80' 0" (24.54 m)	19' 0" (5.99 m)	19' 11" (6.08 m)	27.5 kn / 36 kn	
720 FERRETTI	69' 0" (21.03 m)	18' 0" (5.59 m)	19' 8" (6 m) – 21' 4" (6.50 m)	26 kn / 30 kn	72
850	85' 0" (25.98 m)	20' 0" (6.28 m)		24 kn / 32 kn	124
Ferretti 550	57' 0" (17.42 m)	15' 0" (4.82 m)	4' 3" (1.30 m)	25 kn / 30 kn	55
881	88' 0" (26.82 m)	22' 0" (6.81 m)			
800	81' 0" (24.70 m)	20' 0" (6.27 m)	6' 7" (2 m)	27 kn / 31 kn	78

# SPECIFICATIONS

---

**LOA:**

59' 0" (17.98 m)

**Max Draft:**

16' 11" (5.17 m)

**Cruise Speed:**

26 kn / 29.92 mph

**Water Capacity:**

174 Gallons

**Total Heads:**

3

**Crew Berths:**

1

**Hull Material:**

Fiberglass and Plastic Yachts

**Hull Configuration:**

Deep Vee

**Engines:**

2

**Engine Type:**

Inboard

**Beam:**

17' 0" (5.26 m)

**Max Speed:**

34 kn / 39.13 mph

**Fuel Capacity:**

924 Gallons

**Crew Cabin:**

1

**Deck Material:**

Fiberglass

**Hull Designer:**

Ferretti

**Manufacturer:**

MAN

**Fuel Type:**

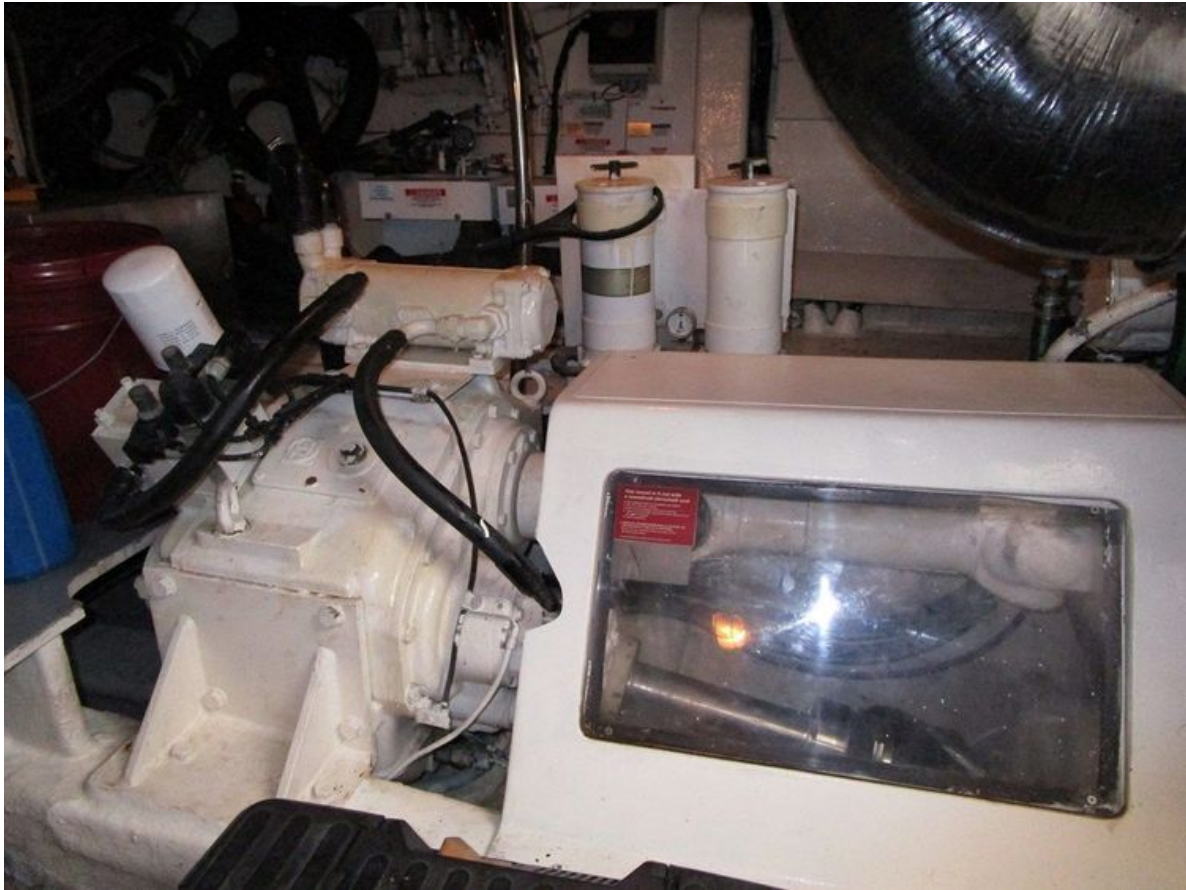
Diesel

# GALLERY











# CONTACTS

---

Shestakov Yacht Sales is a brokerage company specializing in the sale and service of yachts worldwide. The company offers services for buying and selling both new and used motor yachts, sailing vessels, and luxury superyachts. They also provide yacht registration, insurance, technical maintenance, crew selection, and charter organization services across the U.S., Canada, Latin America, the Caribbean, and the Bahamas.

The founder and lead broker of the company is Andrey Shestakov, a licensed and certified expert with extensive experience in marine engineering and shipbuilding.

The company has an extensive network of partnerships with major yacht manufacturers worldwide and provides services in multiple languages, including Russian, Ukrainian, Spanish, and English. The office is in Dania Beach, Florida, USA.

For more information and to view available yachts, you can visit the company's official website: <https://shestakovyachtsales.com>

## Contact details

---

**Phone:** +1(954)274-4435

**Email:** [andrey@shestakovyachtsales.com](mailto:andrey@shestakovyachtsales.com)

## Address

---



1380 Weeping Willow Way, Hollywood,  
Florida 33019