



SHESTAKOV

Yacht Sales

720 FERRETTI – FERRETTI YACHTS



Builder:

Ferretti Yachts

Model:

720 FERRETTI

LOA:

69' 0" (21.03 m)

Min Draft:

19' 8" (6 m)

Beam:

18' 0" (5.59 m)

Max Draft:

21' 4" (6.50 m)

Cruise Speed:

26 kn / 29.92 mph

Max Speed:

30 kn / 34.52 mph

Gross Tonnage:

72 Pounds

Water Capacity:

264 Gallons

Fuel Capacity:

1189 Gallons

Sleeps:

8

If you would like to buy a yacht **720 FERRETTI – Ferretti Yachts** or would like help, please call +1(954)274-4435 or visit shestakovyachtsales.com

TABLE OF CONTENTS

OVERVIEW	3
Selecting a 720 FERRETTI	3
Features of the Model	4
Technical Specifications	4
Pricing and Ordering	5
Questions and Answers	5
Owner Experience Review	5
Pros and Cons	6
Comparison with Other Models	7
SPECIFICATIONS	8
GALLERY	9
CONTACTS	14

OVERVIEW

The 720 FERRETTI from Ferretti Yachts is a motor yacht built on a Modified V-Hull with a fiberglass and plastic hull. Measuring 69 ft overall with an 18 ft beam, it typically cruises at 26 knots and reaches about 30 knots at top end, driven by twin MAN diesel engines, and provides sleeping space for eight guests plus crew. Presented by Andrey Shestakov and Shestakov Yacht Sales.

Selecting a 720 FERRETTI

Choosing the 720 FERRETTI should be driven by how its hull, layout, and performance align with your intended use. As a motor yacht built with fiberglass-and-plastic construction, it balances speed and comfort for private family cruising or for owner-operated programs supported by professional crew.

Consider the following:

- Performance: Designed to cruise at 26 knots with a 30-knot maximum for rapid coastal passages.
- Space planning: Accommodation for 8 guests and 4 heads to maintain privacy and onboard convenience.
- Professional support: Dedicated crew cabin with two berths to provide service and safety while underway.
- Operating water depths: Draft ranges from 19.685 ft (6 m) to 21.325 ft (6.5 m).
- Design pedigree: Hull conceived by the Ferretti Engineering Department with interiors by the Ferretti Group.

Features of the Model

- Category: motor yacht with a Modified V-Hull.
- Construction: fiberglass and plastic hull; deck constructed of fiberglass.
- Dimensions: 69 ft LOA and an 18 ft beam providing abundant volume and stability.
- Power and fuel: Twin MAN diesel engines delivering dependable propulsion.
- Speed: 26 kn cruise (approx 29.92 mph); 30 kn maximum (approx 34.52 mph).
- Capacity: Accommodation for 8 guests; 4 heads for guest comfort.
- Crew: Single crew cabin with 2 berths for professional crew.
- Design: Hull by Ferretti Engineering Department; interior by Ferretti Group.

Technical Specifications

- Length overall (LOA): 69 ft (21.03 m)
- Beam: 18 ft (5.59 m)
- Draft: min 19.685 ft (6 m); max 21.325 ft (6.5 m)
- Gross tonnage: 72 GT
- Hull configuration: Modified V-Hull
- Hull material/category: fiberglass and plastic
- Deck material: Fiberglass
- Hull designer: Ferretti Engineering Department
- Interior designer: Ferretti Group
- Engines: 2 x MAN
- Fuel type: Diesel
- Cruising speed: 26 kn (approx 29.92 mph)
- Maximum speed: 30 kn (approx 34.52 mph)
- Fuel capacity: 1189 gal
- Water capacity: 264 gal
- Accommodation: Sleeps 8; 4 heads

- Crew: 1 crew cabin; 2 crew beds

Pricing and Ordering

For pricing, current inventory status, and to schedule viewings of the 720 FERRETTI, please contact Andrey Shestakov at Shestakov Yacht Sales. Our brokerage will assist you with detailed specifications, arranging surveys, and negotiating terms to ensure a smooth purchase of this motor yacht built with proven fiberglass and plastic construction.

Questions and Answers

- Q: What are the cruising and maximum speeds of the 720 FERRETTI? A: The yacht achieves a **cruising speed** of 26 knots (approx 29.92 mph) and a **maximum speed** around 30 knots (approx 34.52 mph).
- Q: How many guests can the 720 FERRETTI accommodate? A: The layout **accommodates** 8 guests and includes **4 heads** for onboard comfort.
- Q: Who designed the hull and interiors of the 720 FERRETTI? A: The **hull design** was executed by the Ferretti Engineering Department, while the **interior design** is by the Ferretti Group.
- Q: What engines power the 720 FERRETTI and what fuel does it use? A: Propulsion is provided by **2 x MAN** engines burning **Diesel** .
- Q: What is the construction and hull type of this yacht? A: This is a motor yacht on a **Modified V-Hull** with a fiberglass and plastic hull; the deck material is **Fiberglass** .

Owner Experience Review

Owners commonly operate the 720 FERRETTI for family weekend escapes—many run it themselves with occasional crew support—and it also

appears frequently on Mediterranean day-charter listings. Sea-trial records typically show about 28 knots at roughly 2,100 rpm as an economical cruise setting, with top speeds entering the low 30s. The yacht handles with agility for a low-20-meter flybridge, and owners frequently note a quiet, rattle-free ride on impacts, although the warped-plane hull with 12° stern deadrise can be more sensitive when struck by large beam seas.

Below decks, the standard arrangement usually includes a full-beam owner's stateroom amidships with expansive hull windows and 3–4 guest cabins, most often configured en-suite. Deck ergonomics—features like a side gate, wide side decks, and smooth circulation to the flybridge—are praised for improving safety and ease of movement for family members. Some owners mention that salon headroom can feel limited for taller guests and that door sills may be perceived as obstructions.

Routine maintenance is generally straightforward thanks to ample machinery access and a large hatch that facilitates removal of major components; gensets and service systems are reachable without excessive maneuvering. Service considerations differ by engine fit—earlier examples were fitted with MTU 10V units, while later boats use MAN V8/V12 options—so parts sourcing and dealer support depend on the specific vessel. Online forums note occasional quality-control or gelcoat anecdotes across Ferretti Group models, yet many owners still regard the 720 as a capable sea boat; as always, a comprehensive pre-purchase survey is recommended.

Pros and Cons

- Real-world cruises near 28 knots and top speeds in the low-30s make it ideal for fast coastal hops and island runs.
- Full-beam owner's suite, 3–4 en-suite guest cabins, and well-thought deck ergonomics support family cruising and charter operations.

- Excellent machinery access and a large removal hatch simplify both routine servicing and major overhauls.
- Salon headroom may feel constrained for taller owners, and some users report door sills that intrude on circulation.
- The warped-plane hull exhibits greater sensitivity to larger beam-on seas than it does in head seas.
- Variations in engine packages across different model years affect service-network availability and spare-parts planning.

Comparison with Other Models

Model	LOA	Beam	Draft	Speed (Cruising/Max)	Gross Tonnage
720 FERRETTI	69' 0" (21.03 m)	18' 0" (5.59 m)	19' 8" (6 m) – 21' 4" (6.50 m)	26 kn / 30 kn	72
590 Motor Yacht	59' 0" (17.98 m)	17' 0" (5.26 m)	16' 11" (5.17 m)	26 kn / 34 kn	
FERRETTI 720	71' 0" (21.78 m)	19' 0" (5.80 m)	9' 7" (2.93 m)	30 kn / 35 kn	57.4
CUSTOM LINE 97	97' 0" (29.70 m)	28' 0" (8.51 m)	5' 11" (1.80 m)	16 kn / 25 kn	176
80	80' 0" (24.54 m)	19' 0" (5.99 m)	19' 11" (6.08 m)	27.5 kn / 36 kn	
850	85' 0" (25.98 m)	20' 0" (6.28 m)		24 kn / 32 kn	124
Ferretti 550	57' 0" (17.42 m)	15' 0" (4.82 m)	4' 3" (1.30 m)	25 kn / 30 kn	55
881	88' 0" (26.82 m)	22' 0" (6.81 m)			
800	81' 0" (24.70 m)	20' 0" (6.27 m)	6' 7" (2 m)	27 kn / 31 kn	78

SPECIFICATIONS

LOA:

69' 0" (21.03 m)

Beam:

18' 0" (5.59 m)

Cruise Speed:

26 kn / 29.92 mph

Gross Tonnage:

72 Pounds

Fuel Capacity:

1189 Gallons

Sleeps:

8

Crew Cabin:

1

Hull Material:

Fiberglass and Plastic Yachts

Hull Configuration:

Modified V-Hull

Interior Designer:

Ferretti Group

Engines:

2

Fuel Type:

Diesel

Min Draft:

19' 8" (6 m)

Max Draft:

21' 4" (6.50 m)

Max Speed:

30 kn / 34.52 mph

Water Capacity:

264 Gallons

Total Heads:

4

Crew Berths:

2

Deck Material:

Fiberglass

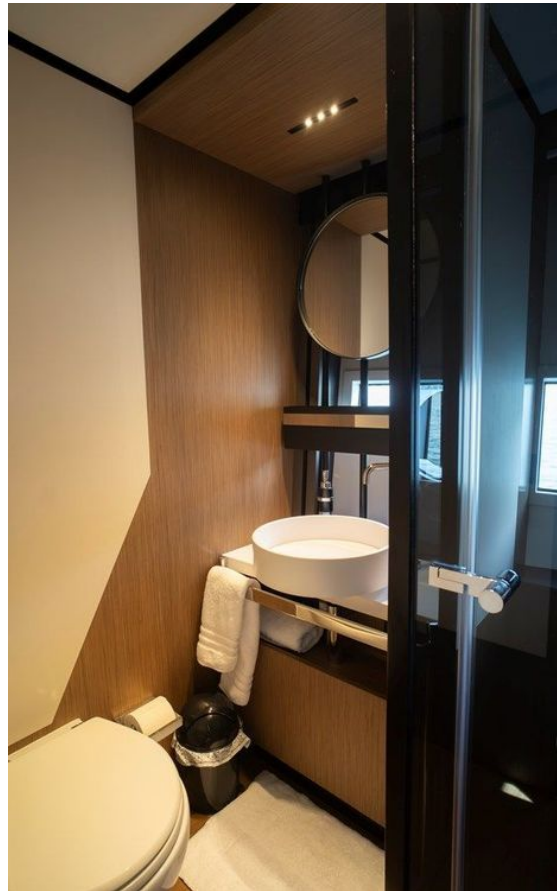
Hull Designer:

Ferretti Engineering Department

Manufacturer:

MAN

GALLERY











CONTACTS

Shestakov Yacht Sales is a brokerage company specializing in the sale and service of yachts worldwide. The company offers services for buying and selling both new and used motor yachts, sailing vessels, and luxury superyachts. They also provide yacht registration, insurance, technical maintenance, crew selection, and charter organization services across the U.S., Canada, Latin America, the Caribbean, and the Bahamas.

The founder and lead broker of the company is Andrey Shestakov, a licensed and certified expert with extensive experience in marine engineering and shipbuilding.

The company has an extensive network of partnerships with major yacht manufacturers worldwide and provides services in multiple languages, including Russian, Ukrainian, Spanish, and English. The office is in Dania Beach, Florida, USA.

For more information and to view available yachts, you can visit the company's official website: <https://shestakovyachtsales.com>

Contact details

Phone: +1(954)274-4435

Email: andrey@shestakovyachtsales.com

Address



1380 Weeping Willow Way, Hollywood,
Florida 33019