



SHESTAKOV

Yacht Sales

850 – FERRETTI YACHTS



Builder:

Ferretti Yachts

Model:

850

LOA:

85' 0" (25.98 m)

Beam:

20' 0" (6.28 m)

Cruise Speed:

24 kn / 27.62 mph

Max Speed:

32 kn / 36.83 mph

Gross Tonnage:

124 Pounds

Water Capacity:

348.71 Gallons

Fuel Capacity:

1783.16 Gallons

Hull Material:

Fiberglass and Plastic Yachts

Deck Material:

Fiberglass

Engines:

2

If you would like to buy a yacht **850 – Ferretti Yachts** or would like help, please call +1(954)274-4435 or visit shestakovyachtsales.com

TABLE OF CONTENTS

OVERVIEW 3

- Selecting a 850 3
- Features of the Model 3
- Technical Specifications 4
- Pricing and Ordering 4
- Questions and Answers 4
- Owner Experience Review 5
- Pros and Cons 6
- Comparison with Other Models 6

SPECIFICATIONS 8

GALLERY 9

CONTACTS 14

OVERVIEW

Represented by Andrey Shestakov and the team at Shestakov Yacht Sales, the 850 from Ferretti Yachts is an 85 ft motor yacht built on a fiberglass hull, designed to deliver swift, comfortable cruising performance.

Selecting a 850

Opt for the 850 when you want substantial onboard volume (124 gross tons), a wide 20 ft (6.28 m) beam for spacious living areas, and performance ability that includes a 24-knot cruise and a 32-knot top speed. Twin MAN inboard diesels specified by Ferretti Yachts paired with a fiberglass construction hull create an attractive package for owners prioritizing agile handling and premium finish. Contact Andrey Shestakov at Shestakov Yacht Sales for current availability and brokerage guidance on this model.

Features of the Model

- Dimensions designed for generous living: 85 ft (25.98 m) LOA with a 20 ft (6.28 m) beam
- Performance-oriented speeds: 24 kn cruising (27.62 mph) and 32 kn maximum (36.83 mph)
- Propulsion: 2 x MAN, Inboard, Diesel
- Structural makeup: fiberglass hull and fiberglass deck
- Capacities for extended cruising: 1,783.16 gal fuel and 348.71 gal fresh water
- Volume: 124 gross tons
- Classification: motor yacht

Technical Specifications

- Builder: Ferretti Yachts
- Model: 850
- Category: motor yacht
- Hull material: fiberglass
- Deck material: Fiberglass
- Length overall (LOA): 85 ft (25.98 m)
- Beam: 20 ft (6.28 m)
- Cruising speed: 24 kn (27.62 mph)
- Maximum speed: 32 kn (36.83 mph)
- Gross tonnage: 124
- Engines: 2 x MAN, Inboard, Diesel
- Fuel capacity: 1,783.16 gal
- Water capacity: 348.71 gal

Pricing and Ordering

For up-to-date pricing, delivery timelines, and personalized brokerage support for the 850, please get in touch with Andrey Shestakov at Shestakov Yacht Sales. Our brokers will match your wishes to market availability and assist with inspections, surveys, and closing procedures for this motor yacht.

Questions and Answers

Q: What are the cruising and top speeds of the 850? A: The 850 is rated for a **cruising speed** of 24 kn (27.62 mph) and a **maximum speed** of 32 kn (36.83 mph).

Q: What powers this yacht? A: The yacht is driven by **2 x MAN Inboard Diesel**

engines, offering a strong balance of power and efficiency.

Q: What are the fuel and water capacities? A: **Fuel capacity** is 1,783.16 gal, and **water capacity** is 348.71 gal, providing good support for extended passages.

Q: What is the hull and deck made of? A: The hull is built in fiberglass construction, and the deck is finished in **fiberglass** .

Q: Who can help me purchase the 850 by Ferretti Yachts? A: Contact **Andrey Shestakov** and the **Shestakov Yacht Sales** team for experienced assistance with selection, negotiation, and closing on this motor yacht.

Owner Experience Review

Owners commonly portray the 850 from Ferretti Yachts as an ideal family weekender that also adapts well to crewed charter operations. The open maxi-loft main salon spans roughly 10 meters and benefits from large glazing, while the lower deck features a full-beam owner's suite anchoring a four-cabin, all en-suite arrangement. Exterior amenities often include a capacious flybridge (frequently specified with a dark hardtop), roomy cockpit seating, and an aft garage convertible to a beach-style swim platform that simplifies day-to-day life aboard. Separate crew accommodations with private access and a direct route to the helm and galley keep service discreet and efficient.

When underway, the hull's narrow entry and extended waterline are praised for producing composed behavior in waves. Reviewers advise economical, comfortable passages around 8–11 knots at approximately 750–1,000 rpm, with claims of long-range capability exceeding 1,000 nautical miles when run at displacement speeds. Performance trials in calm Mediterranean conditions have recorded roughly 29.6–30 knots, with up to about 31 knots achievable depending on engine choice; many owners also note a brisk cruise in the 25–26 knot range depending on configuration.

Practical ownership observations vary. Side/exterior access to the engine room and dedicated crew circulation routes support professional maintenance, and brokers and owners generally recommend using certified technicians for the MAN V12s. Forum discussions highlight that painted hulls and high-finish exterior work can increase maintenance demands, and some owners describe the roughly 6,750-liter fuel capacity on certain hulls as modest compared with competitors, which may reduce range at planing speeds; another owner noted that adding an internal staircase can be more challenging than on a Y85.

Pros and Cons

- Open-plan maxi-loft salon with a full-beam owner's suite and four en-suite guest cabins is well suited to family use and charter.
- Expansive flybridge, comfortable cockpit, and a garage that converts to a beach platform extend outdoor living options.
- Good seakeeping with efficient 8–11 kt passages and the ability to hit roughly 30–31 kt when needed.
- Reported fuel capacity around 6,750 L on some hulls is smaller than some rivals and can restrict range at planing speeds.
- Painted hulls and high-end finish work may result in increased ongoing maintenance and detailing costs.
- Owners note that retrofitting an internal staircase is more difficult than on a Y85.

Comparison with Other Models

Model	LOA	Beam	Draft	Speed (Cruising/Max)	Gross Tonnage
850	85' 0" (25.98 m)	20' 0" (6.28 m)		24 kn / 32 kn	124

590 Motor Yacht	59' 0" (17.98 m)	17' 0" (5.26 m)	16' 11" (5.17 m)	26 kn / 34 kn	
FERRETI 720	71' 0" (21.78 m)	19' 0" (5.80 m)	9' 7" (2.93 m)	30 kn / 35 kn	57.4
CUSTOM LINE 97	97' 0" (29.70 m)	28' 0" (8.51 m)	5' 11" (1.80 m)	16 kn / 25 kn	176
80	80' 0" (24.54 m)	19' 0" (5.99 m)	19' 11" (6.08 m)	27.5 kn / 36 kn	
720 FERRETTI	69' 0" (21.03 m)	18' 0" (5.59 m)	19' 8" (6 m) – 21' 4" (6.50 m)	26 kn / 30 kn	72
Ferretti 550	57' 0" (17.42 m)	15' 0" (4.82 m)	4' 3" (1.30 m)	25 kn / 30 kn	55
881	88' 0" (26.82 m)	22' 0" (6.81 m)			
800	81' 0" (24.70 m)	20' 0" (6.27 m)	6' 7" (2 m)	27 kn / 31 kn	78

SPECIFICATIONS

LOA:

85' 0" (25.98 m)

Cruise Speed:

24 kn / 27.62 mph

Gross Tonnage:

124 Pounds

Fuel Capacity:

1783.16 Gallons

Hull Material:

Fiberglass and Plastic Yachts

Engines:

2

Engine Type:

Inboard

Beam:

20' 0" (6.28 m)

Max Speed:

32 kn / 36.83 mph

Water Capacity:

348.71 Gallons

Deck Material:

Fiberglass

Manufacturer:

MAN

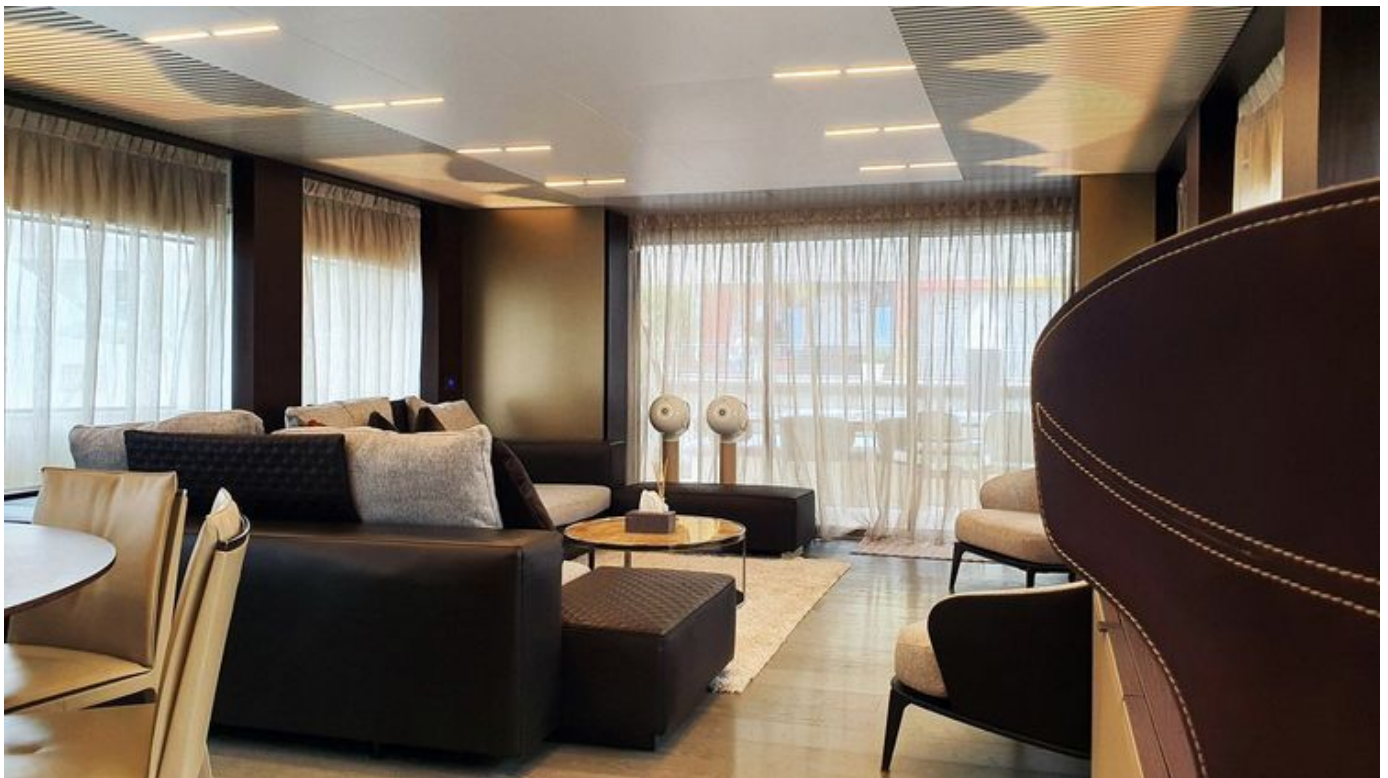
Fuel Type:

Diesel

GALLERY











CONTACTS

Shestakov Yacht Sales is a brokerage company specializing in the sale and service of yachts worldwide. The company offers services for buying and selling both new and used motor yachts, sailing vessels, and luxury superyachts. They also provide yacht registration, insurance, technical maintenance, crew selection, and charter organization services across the U.S., Canada, Latin America, the Caribbean, and the Bahamas.

The founder and lead broker of the company is Andrey Shestakov, a licensed and certified expert with extensive experience in marine engineering and shipbuilding.

The company has an extensive network of partnerships with major yacht manufacturers worldwide and provides services in multiple languages, including Russian, Ukrainian, Spanish, and English. The office is in Dania Beach, Florida, USA.

For more information and to view available yachts, you can visit the company's official website: <https://shestakovyachtsales.com>

Contact details

Phone: +1(954)274-4435

Email: andrey@shestakovyachtsales.com

Address



1380 Weeping Willow Way, Hollywood,
Florida 33019