



SHESTAKOV

Yacht Sales

## 94 – FERRETTI YACHTS



**Builder:**

Ferretti Yachts

**Model:**

94

**LOA:**

94' 0" (28.65 m)

**Beam:**

23' 0" (7.09 m)

**Max Draft:**

18' 7" (5.67 m)

**Cruise Speed:**

20 kn / 23.02 mph

**Max Speed:**

23 kn / 26.47 mph

**Water Capacity:**

750 Gallons

**Fuel Capacity:**

3000 Gallons

**Sleeps:**

8

**Total Heads:**

6

**Hull Material:**

Fiberglass and Plastic Yachts

If you would like to buy a yacht **94 – Ferretti Yachts** or would like help, please call +1(954)274-4435 or visit [shestakovyachtsales.com](http://shestakovyachtsales.com)

---

# TABLE OF CONTENTS

---

<b>OVERVIEW .....</b>	<b>3</b>
<b>Selecting a 94 .....</b>	<b>3</b>
<b>Features of the Model .....</b>	<b>3</b>
<b>Technical Specifications .....</b>	<b>4</b>
<b>Pricing and Ordering .....</b>	<b>4</b>
<b>Questions and Answers .....</b>	<b>4</b>
<b>Owner Experience Review .....</b>	<b>5</b>
<b>Pros and Cons .....</b>	<b>6</b>
<b>Comparison with Other Models .....</b>	<b>7</b>
<b>SPECIFICATIONS .....</b>	<b>8</b>
<b>GALLERY .....</b>	<b>9</b>
<b>CONTACTS .....</b>	<b>14</b>

## OVERVIEW

---

Discover the balance between performance and interior volume with the Ferretti Yachts 94 — a motor yacht built on a fiberglass and plastic hull. Represented by Andrey Shestakov and Shestakov Yacht Sales.

### Selecting a 94

---

Consider the 94 when you want a tried-and-true motor yacht that pairs 94 ft (28.65 m) of overall length with a generous 23 ft (7.09 m) beam to maximize interior volume. Twin MTU inboard diesels produce dependable thrust for a 20-knot (23.02 mph) cruise and a 23-knot (26.47 mph) top end, offering a comfortable blend of speed and seakeeping. With accommodation for 8 guests and 6 heads, large fuel (3,000 gal) and water (750 gal) capacities, and a hull in the fiberglass and plastic class, it is well suited for extended cruising. Contact Andrey Shestakov at Shestakov Yacht Sales to tailor specifications and manage delivery to your timetable.

### Features of the Model

---

- Twin MTU propulsion in an inboard diesel configuration for reliable operation and straightforward servicing.
- Hull classified as fiberglass and plastic with a Fiberglass deck.
- Generous tankage: 3,000 gal fuel capacity and 750 gal of fresh water.
- Guest arrangements accommodate 8 sleepers and include 6 heads for comfortable liveaboard use.
- Performance profile delivering a 20-knot cruising pace and a 23-knot maximum speed.

## Technical Specifications

---

- Builder: Ferretti Yachts
- Model: 94
- Category: motor yacht
- Hull category: fiberglass and plastic
- LOA: 94 ft (28.65 m)
- Beam: 23 ft (7.09 m)
- Max draft: 18.591 ft (5.6666 m)
- Cruising speed: 20 kn (23.02 mph)
- Max speed: 23 kn (26.47 mph)
- Engines: 2 x MTU, Inboard, Diesel
- Fuel capacity: 3,000 gal
- Water capacity: 750 gal
- Sleeps: 8
- Heads: 6
- Deck material: Fiberglass

## Pricing and Ordering

---

For up-to-date availability, pricing information, and full specification packages for the 94, please reach out to Andrey Shestakov and the team at Shestakov Yacht Sales. We coordinate specification reviews, arrange surveys and sea trials, and provide end-to-end delivery assistance.

## Questions and Answers

---

Q: What is the cruising and top speed of the 94? A: The **cruising speed** is 20 kn (23.02 mph) and the **top speed** is 23 kn (26.47 mph).

Q: What engines power this yacht? A: It is equipped with **two MTU** engines in an **Inboard** configuration running on **Diesel** .

Q: How many people can sleep onboard, and how many heads are there? A: The yacht **sleeps 8** and has **6 heads** , providing flexible accommodations.

Q: What are the principal dimensions? A: **LOA** is 94 ft (28.65 m), **beam** is 23 ft (7.09 m), and maximum **draft** is 18.591 ft (5.6666 m).

Q: Who builds the 94 and what type of yacht is it? A: The **builder** is Ferretti Yachts. It is a motor yacht with a hull in fiberglass and plastic.

## Owner Experience Review

---

Owners and captains commonly describe the 94 from Ferretti Yachts as a highly adaptable vessel for family voyages, social entertaining, and term-charter operations. Introduced around 1998–2006 as the initial Custom Line 94, the run was limited to roughly 22 hulls. The layout frequently features an on-deck raised-pilothouse master, a full-beam VIP, and two guest cabins, creating interiors that feel larger than the nominal length implies. Many examples have been adapted with beach-club conversions, expansive salons, and sizable flybridges—often fitted with a Jacuzzi—making them ideal for day cruising and guest turnover; the plan of four cabins plus crew quarters is frequently cited by brokers as a major advantage for term-charter use.

Underway reports focus on a comfortable 20–23-knot cruising range with observed top speeds commonly reported in the high 20s (27–28 knots) on favorable trials. Brokers praise the platform for a dry, composed ride and respectable offshore manners—one sea trial review even remarked that at cruise she "feels like she might as well be a 120." Numerous yachts are fitted with Humphree or Naiad stabilizers and trim/interceptors, equipment that owners and captains credit with significant comfort gains at anchor and while

underway. For longer hops—such as passages to the Bahamas—owners note economical performance when slowed: roughly 300 nm at 15 knots and about 500 nm at 12 knots have been reported.

Ownership experience centers on attentive maintenance of the MTU 16V propulsion packages (M90/M91/2000 series), where documented major overhauls and full MTU rebuilds are not uncommon and substantial service costs should be anticipated. Regular refits keep these yachts market-relevant—typical upgrades include new generators, modern Garmin navigation suites, retrofitted stabilizers, and refreshed soft furnishings. Engine-room access is often facilitated via the beach-club or transom door as a secondary entry point, and owners and captains routinely emphasize disciplined maintenance schedules and take pride in the condition of the engine spaces.

## Pros and Cons

---

- On deck master suite combined with a full beam VIP and two guest cabins creates interior volume that often feels larger than the 94' length implies.
- Offers a comfortable, dry ride with a normal cruise of 20–23 knots and good fuel economy when slowed (owner reports ~300 nm at 15 kn and ~500 nm at 12 kn).
- Strong entertaining capabilities—beach club conversions and a generous flybridge/Jacuzzi make it well suited to term chartering.
- Crew quarters are functional but tend to be compact.
- Built circa 1998–2006, so most hulls are older and overall condition hinges on refit history.
- MTU 16V propulsion demands significant service cycles and costs; many boats require ongoing refits to remain current.

## Comparison with Other Models

Model	LOA	Beam	Draft	Speed (Cruising/ Max)	Gross Tonnage
94	94' 0" (28.65 m)	23' 0" (7.09 m)	18' 7" (5.67 m)	20 kn / 23 kn	
590 Motor Yacht	59' 0" (17.98 m)	17' 0" (5.26 m)	16' 11" (5.17 m)	26 kn / 34 kn	
FERRETI 720	71' 0" (21.78 m)	19' 0" (5.80 m)	9' 7" (2.93 m)	30 kn / 35 kn	57.4
CUSTOM LINE 97	97' 0" (29.70 m)	28' 0" (8.51 m)	5' 11" (1.80 m)	16 kn / 25 kn	176
80	80' 0" (24.54 m)	19' 0" (5.99 m)	19' 11" (6.08 m)	27.5 kn / 36 kn	
720 FERRETTI	69' 0" (21.03 m)	18' 0" (5.59 m)	19' 8" (6 m) – 21' 4" (6.50 m)	26 kn / 30 kn	72
850	85' 0" (25.98 m)	20' 0" (6.28 m)		24 kn / 32 kn	124
Ferretti 550	57' 0" (17.42 m)	15' 0" (4.82 m)	4' 3" (1.30 m)	25 kn / 30 kn	55
881	88' 0" (26.82 m)	22' 0" (6.81 m)			

# SPECIFICATIONS

---

**LOA:**

94' 0" (28.65 m)

**Max Draft:**

18' 7" (5.67 m)

**Cruise Speed:**

20 kn / 23.02 mph

**Water Capacity:**

750 Gallons

**Sleeps:**

8

**Hull Material:**

Fiberglass and Plastic Yachts

**Engines:**

2

**Engine Type:**

Inboard

**Beam:**

23' 0" (7.09 m)

**Max Speed:**

23 kn / 26.47 mph

**Fuel Capacity:**

3000 Gallons

**Total Heads:**

6

**Deck Material:**

Fiberglass

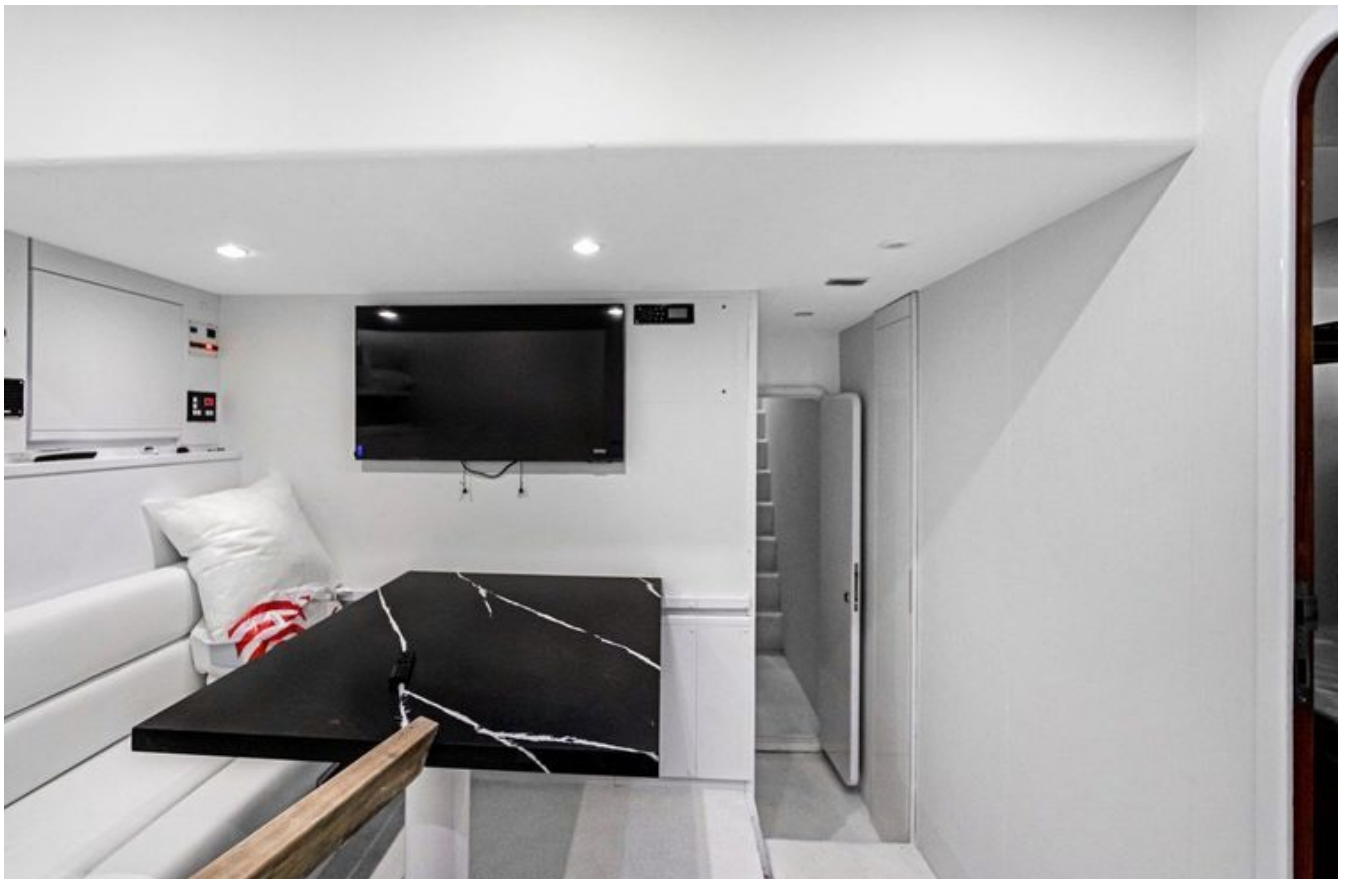
**Manufacturer:**

MTU

**Fuel Type:**

Diesel

# GALLERY











# CONTACTS

---

Shestakov Yacht Sales is a brokerage company specializing in the sale and service of yachts worldwide. The company offers services for buying and selling both new and used motor yachts, sailing vessels, and luxury superyachts. They also provide yacht registration, insurance, technical maintenance, crew selection, and charter organization services across the U.S., Canada, Latin America, the Caribbean, and the Bahamas.

The founder and lead broker of the company is Andrey Shestakov, a licensed and certified expert with extensive experience in marine engineering and shipbuilding.

The company has an extensive network of partnerships with major yacht manufacturers worldwide and provides services in multiple languages, including Russian, Ukrainian, Spanish, and English. The office is in Dania Beach, Florida, USA.

For more information and to view available yachts, you can visit the company's official website: <https://shestakovyachtsales.com>

## Contact details

---

**Phone:** +1(954)274-4435

**Email:** [andrey@shestakovyachtsales.com](mailto:andrey@shestakovyachtsales.com)

## Address

---



1380 Weeping Willow Way, Hollywood,  
Florida 33019