



SHESTAKOV

Yacht Sales

24M LONG RANGE EXPLORER – FIFTH OCEAN SHIPYARD



Builder:

FIFTH OCEAN SHIPYARD

Model:

24m Long Range Explorer

LOA:

79' 0" (24.08 m)

Min Draft:

19' 8" (6 m)

Beam:

22' 0" (6.71 m)

Max Draft:

22' 12" (7 m)

Cruise Speed:

7.5 kn / 8.63 mph

Max Speed:

11.5 kn / 13.23 mph

Gross Tonnage:

140 Pounds

Water Capacity:

1400 Gallons

Fuel Capacity:

4491 Gallons

Total Heads:

4

If you would like to buy a yacht **24M LONG RANGE EXPLORER – FIFTH OCEAN SHIPYARD** or would like help, please call +1(954)274-4435 or visit shestakovyachtsales.com

TABLE OF CONTENTS

OVERVIEW 3

- Selecting a 24m Long Range Explorer 3
- Features of the Model 3
- Technical Specifications 4
- Pricing and Ordering 4
- Questions and Answers 5
- Owner Experience Review 5
- Pros and Cons 6
- Comparison with Other Models 7

SPECIFICATIONS 8

GALLERY 9

CONTACTS 14

OVERVIEW

The 24m Long Range Explorer from FIFTH OCEAN SHIPYARD is a motor yacht conceived as an expedition yacht built on a steel hull, marrying rugged structural integrity with long-distance, efficient passagemaking.

Selecting a 24m Long Range Explorer

Opting for the 24m Long Range Explorer is appropriate for owners prioritizing endurance, robust safety margins, and functional onboard comfort. As a motor yacht with authentic expedition pedigree constructed in steel, it is configured for extended offshore passages with generous fuel and water stores.

Shestakov Yacht Sales, under the direction of Andrey Shestakov, can assist with customization choices, current availability, and the purchase process.

Features of the Model

- Hull configuration: Displacement with a Bulbous Bow to enhance fuel-efficient passagemaking at steady speeds
- Durable steel hull and steel decks for long-term structural resilience
- Twin Caterpillar inboard diesel engines delivering a balance of economy and proven dependability
- Typical cruising pace of 7.5 knots (8.63 mph) and a maximum speed capability of 11.5 knots (13.23 mph)
- Significant tankage: 4,491 gallons of fuel and 1,400 gallons of fresh water
- Comfortable living provisions including 4 heads and accommodation for 2 crew in dedicated cabins
- Approximately 140 gross tons offering generous internal volume and storage capacity

Technical Specifications

- Builder: FIFTH OCEAN SHIPYARD
- Model: 24m Long Range Explorer
- Type: motor yacht / expedition yacht
- Hull: steel
- Hull configuration: Displacement with Bulbous Bow
- LOA: 79 ft (24.08 m)
- Beam: 22 ft (6.71 m)
- Draft (min/max): 19.685 ft / 22.966 ft (6.00 m / 7.00 m)
- Gross tonnage: 140 GT
- Deck material: Steel
- Engines: 2 x Caterpillar
- Engine type: Inboard
- Fuel type: Diesel
- Cruising speed: 7.5 kn (8.63 mph)
- Maximum speed: 11.5 kn (13.23 mph)
- Fuel capacity: 4,491 gal
- Fresh water capacity: 1,400 gal
- Heads: 4
- Crew cabins: 2

Pricing and Ordering

Current pricing, delivery schedules, and customization options for the 24m Long Range Explorer are provided on inquiry. Reach out to Shestakov Yacht Sales to review spec choices and timelines; Andrey Shestakov will advise on options and manage brokerage support through the ordering and handover stages.

Questions and Answers

Q: What kind of yacht is the 24m Long Range Explorer? A: It is a motor yacht configured as an expedition yacht on a steel hull. The design emphasizes **durability** , **range** , and **seakeeping** .

Q: What are the engines and performance figures? A: Propulsion comes from **2 x Caterpillar inboard diesel** units. Anticipate a standard **cruising speed** of 7.5 kn (8.63 mph) and a **top speed** near 11.5 kn (13.23 mph).

Q: How is the yacht arranged for crew and amenities? A: Accommodation includes **4 heads** and **2 crew cabins** , laid out to support sustained offshore operation with clear **crew** quarters.

Q: What about hull and draft characteristics? A: The vessel uses a steel build in a **Displacement w Bulbous Bow** arrangement. The **draft** is roughly 6.00–7.00 m (19.685–22.966 ft), which favors stable **bluewater** handling.

Q: How do I confirm price and availability? A: **Pricing** and **availability** are supplied on request via Shestakov Yacht Sales. **Contact** Andrey Shestakov for up-to-date listings and brokerage assistance on the 24m Long Range Explorer by FIFTH OCEAN SHIPYARD.

Owner Experience Review

Owners and brokers commonly describe the 24m Long Range Explorer from FIFTH OCEAN SHIPYARD as a genuine bluewater platform, engineered for autonomy and economical passage-making. Published ranges typically fall in the 3,200–4,100 nm window at an approximate 7–8 knot cruising pace, supported by a full-displacement hull that delivers a substantial, seakindly motion underway. Normal operation tends to center around 7–9 knots, with a modest maximum of roughly 11–11.5 knots, and the inclusion of zero speed

Naiad stabilisers improves comfort at anchor and in beam seas.

Internally, the layout suits owner-operated family cruising with professional crew assistance: four guest cabins (master, VIP, double, twin/single) accommodate 7–8 guests, while separate crew quarters include the captain's station on the wheelhouse deck. The notable beam—cited at about 6.65 m—paired with a steel hull and aluminium superstructure creates unusually generous interior volume for a 24 m vessel, augmented by a foredeck Jacuzzi and several alfresco dining zones. Finishes are presented to yacht standards, commonly featuring Miele appliances in the galley, integrated smart house/AV systems, and a pop-up television in the salon, as referenced in many listings.

For routine use, twin Caterpillar C7 engines combined with a large fuel reserve (around 17,000 L) deliver the long-range performance owners expect. Like other steel-hulled expedition yachts, periodic yard maintenance is part of ownership, though publicly available, detailed breakdowns of ongoing costs are limited. Open owner forums contain minimal long-term user commentary—most accessible information derives from broker specifications and press material rather than extensive owner reports.

Pros and Cons

- Long-range efficiency and confident seakeeping between 7–9 knots thanks to the full-displacement hull and zero-speed Naiad stabilisers.
- Functional four-cabin arrangement accommodating 7–8 guests plus separate crew quarters, with the captain located on the wheelhouse deck.
- Generous internal volume for a 24 m platform (approximately 6.65 m beam) with a foredeck Jacuzzi, multiple alfresco spaces, and yacht-standard systems.
- Modest top speed of around 11–11.5 knots limits rapid repositioning compared with planing or semi-displacement craft.
- Steel construction and an approximate 17,000 L fuel capacity require

attentive maintenance and regular yard periods.

- Scarce publicly documented long-term owner feedback; most available detail comes from brokerage pages and press rather than extensive owner testimonials.

Comparison with Other Models

Model	LOA	Beam	Draft	Speed (Cruising/Max)	Gross Tonnage
24m Long Range Explorer	79' 0" (24.08 m)	22' 0" (6.71 m)	19' 8" (6 m) – 22' 12" (7 m)	7.5 kn / 11.5 kn	140

SPECIFICATIONS

LOA:

79' 0" (24.08 m)

Beam:

22' 0" (6.71 m)

Cruise Speed:

7.5 kn / 8.63 mph

Gross Tonnage:

140 Pounds

Fuel Capacity:

4491 Gallons

Total Heads:

4

Hull Material:

Steel Yachts

Hull Configuration:

Displacement w Bulbous Bow

Engines:

2

Engine Type:

Inboard

Min Draft:

19' 8" (6 m)

Max Draft:

22' 12" (7 m)

Max Speed:

11.5 kn / 13.23 mph

Water Capacity:

1400 Gallons

Crew Cabin:

2

Deck Material:

Steel

Manufacturer:

Caterpillar

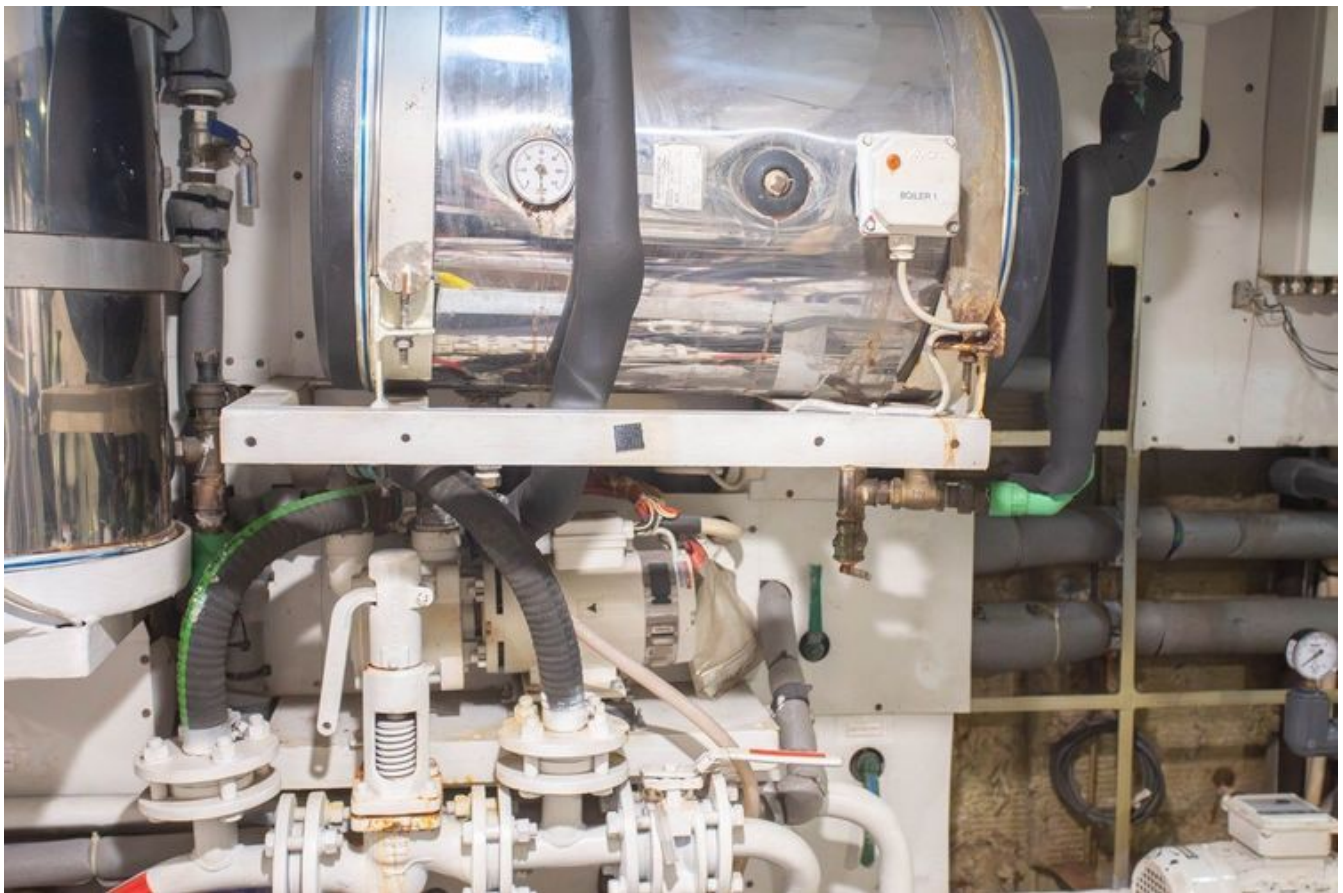
Fuel Type:

Diesel

GALLERY











CONTACTS

Shestakov Yacht Sales is a brokerage company specializing in the sale and service of yachts worldwide. The company offers services for buying and selling both new and used motor yachts, sailing vessels, and luxury superyachts. They also provide yacht registration, insurance, technical maintenance, crew selection, and charter organization services across the U.S., Canada, Latin America, the Caribbean, and the Bahamas.

The founder and lead broker of the company is Andrey Shestakov, a licensed and certified expert with extensive experience in marine engineering and shipbuilding.

The company has an extensive network of partnerships with major yacht manufacturers worldwide and provides services in multiple languages, including Russian, Ukrainian, Spanish, and English. The office is in Dania Beach, Florida, USA.

For more information and to view available yachts, you can visit the company's official website: <https://shestakovyachtsales.com>

Contact details

Phone: +1(954)274-4435

Email: andrey@shestakovyachtsales.com

Address



1380 Weeping Willow Way, Hollywood,
Florida 33019